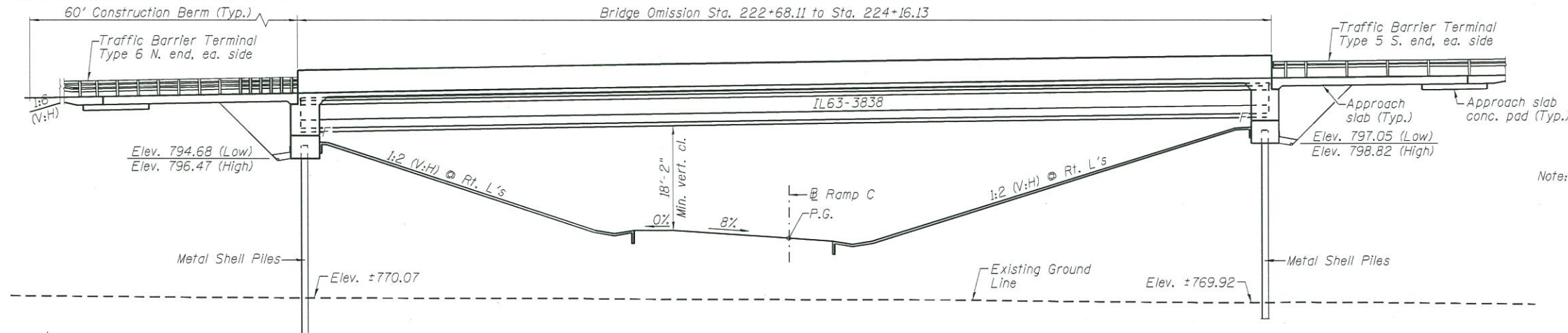


Bench Mark: Chiseled "□" on top of S.W. corner of SW parapet wall of I-74 west bound bridge over FAI 57. Sta. 1059+99.73, 12.54' Left, Elev 787.79

Existing Structure: None No Salvage



PROFILE GRADE RAMP B
(Along Roadway)

Note: The profile grade shows the final elevations after grinding.

PROPOSED RAMP B CURVE DATA

P.I. Sta. = 230+56.25	L = 1,420.88'
$\Delta = 70^\circ-10'-53"$ (Rt.)	E = 257.67'
D = 4°-56'-21"	S.E. = 7.8%
R = 1,160.00'	P.C. Sta. = 222+41.27
T = 814.98'	P.T. Sta. = 236+62.15

PROFILE GRADE RAMP C
(Along Roadway)

PROPOSED RAMP C CURVE DATA

P.I. Sta. = 330+93.16	L = 1,041.65'
$\Delta = 124^\circ-20'-18"$ (Rt.)	E = 548.14'
D = 11°-56'-12"	S.E. = 8.0%
R = 480.00'	P.C.C. Sta. = 321+83.95
T = 909.21'	P.C.C. Sta. = 332+25.60

HIGHWAY CLASSIFICATION

FAI 57/74 - Ramp B
Functional Class: Interstate Ramp
ADT: 2,800 (2013); 4,550 (2040)
ADTT: 795 (2013); 1,292 (2040)
DHV: 320
Design Speed: 55 m.p.h.
Posted Speed: 55 m.p.h.
One-Way Traffic
Directional Distribution: 100% EB

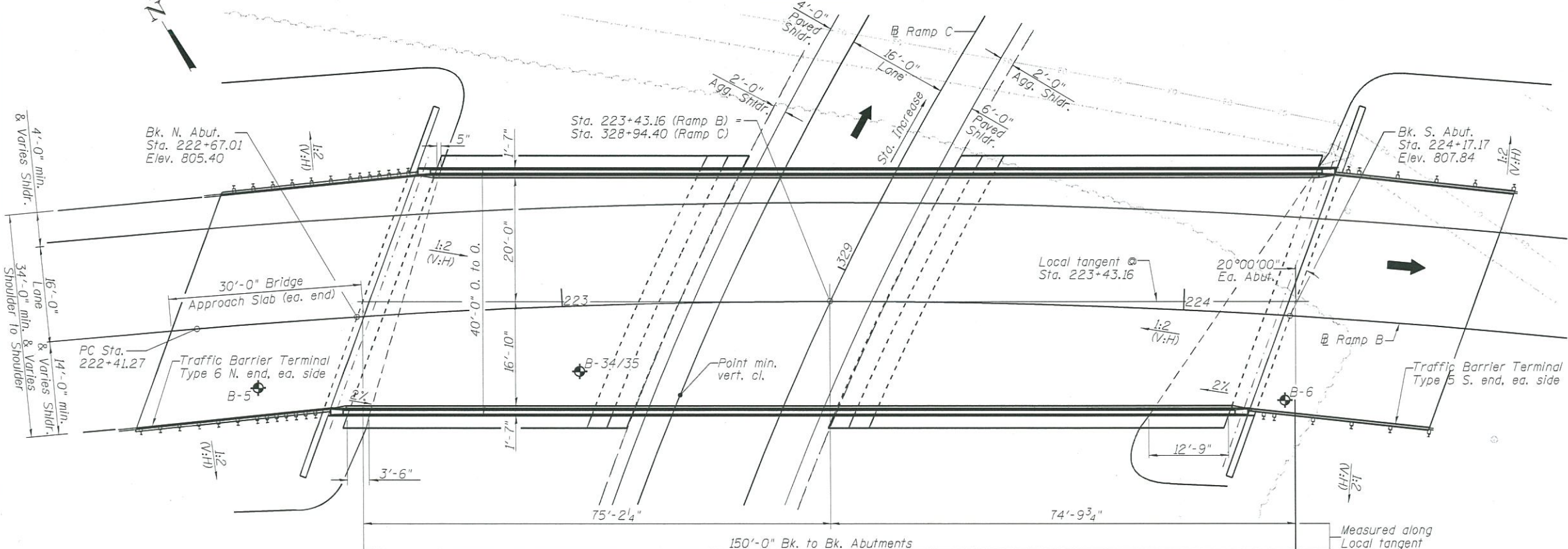
FAI 57/74 - Ramp C
Functional Class: Interstate Ramp
ADT: 2,100 (2013); 2,650 (2040)
ADTT: 376 (2013); 474 (2040)
DHV: 215
Design Speed: 40 m.p.h.
Posted Speed: 40 m.p.h.
One-Way Traffic
Directional Distribution: 100% SB

DESIGN SPECIFICATIONS

2014 AASHTO LRFD Bridge Specifications, 7th Edition w/2015 & 2016 Interims
LOADING HL-93
Allow 50 psf for future wearing surface

ELEVATION

Note: Up to 1/4" may be ground off the bridge deck and the bridge approach slab.



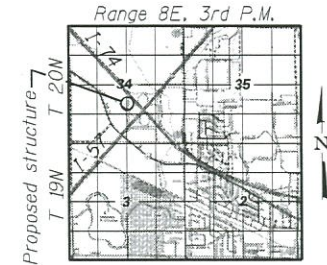
PLAN

DESIGN STRESSES

FIELD UNITS
f'c = 3,500 psi (Cast-In-Place)
f'c = 4,000 psi (Superstructure Concrete)
fy = 60,000 psi (Reinforcement)

PRECAST PRESTRESSED UNITS
f'c = 8,500 psi
fcl = 7,000 psi
fpu = 270,000 psi (0.6" ϕ low lax strands)
fpbt = 202,300 psi (0.6" ϕ low lax strands)

SEISMIC DATA
Seismic Performance Zone (SPZ) = 1
Design Spectral Acceleration at 1.0 sec (SD1) = 0.135g
Design Spectral Acceleration at 0.2 sec (SDS) = 0.233g
Soil Site Class = D



LOCATION SKETCH

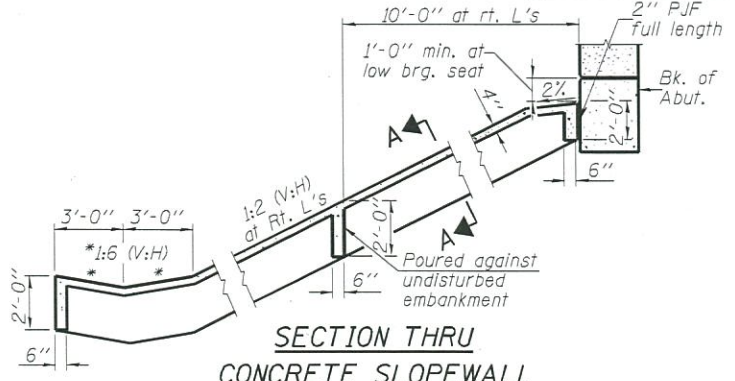
GENERAL PLAN
RAMP B OVER RAMP C
F.A.I. RTE. 57/74
SECTION (10-34-1)H/BK
CHAMPAIGN COUNTY
STATION 223+43.16
STRUCTURE NO. 010-1005

APPROVED

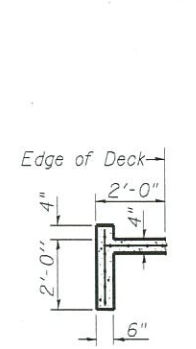
MAY 04 2017

AS A BASIS FOR
PREPARATION OF DETAILED PLANS

SECTION THRU CONCRETE SLOPEWALL



SECTION A-A

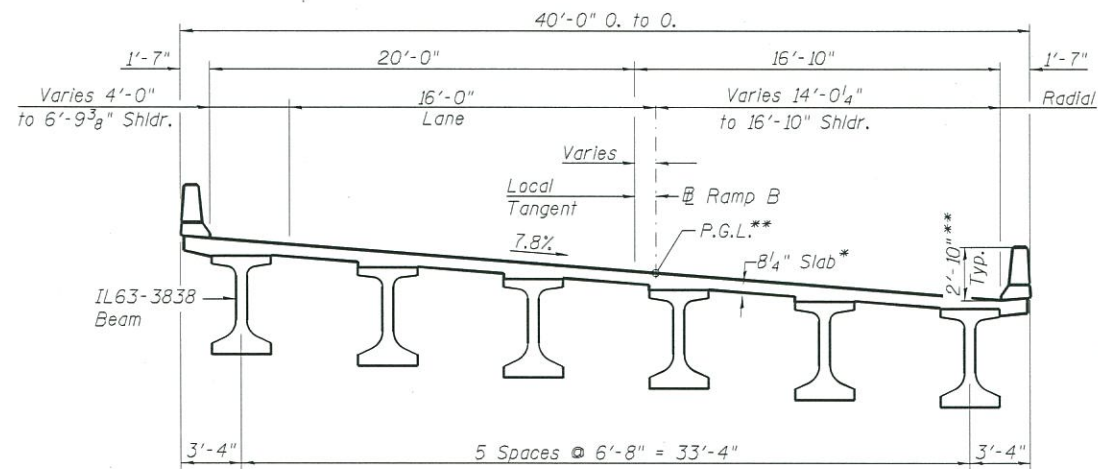


USER NAME = #USER#	DESIGNED MJL	APR 2017	REVISED
#FILE#	CHECKED WLB	APR 2017	REVISED
PLOT SCALE =	DRAWN GLD	APR 2017	REVISED
PLOT DATE =	CHECKED MJL	APR 2017	REVISED

STATE OF ILLINOIS
DEPARTMENT OF TRANSPORTATION

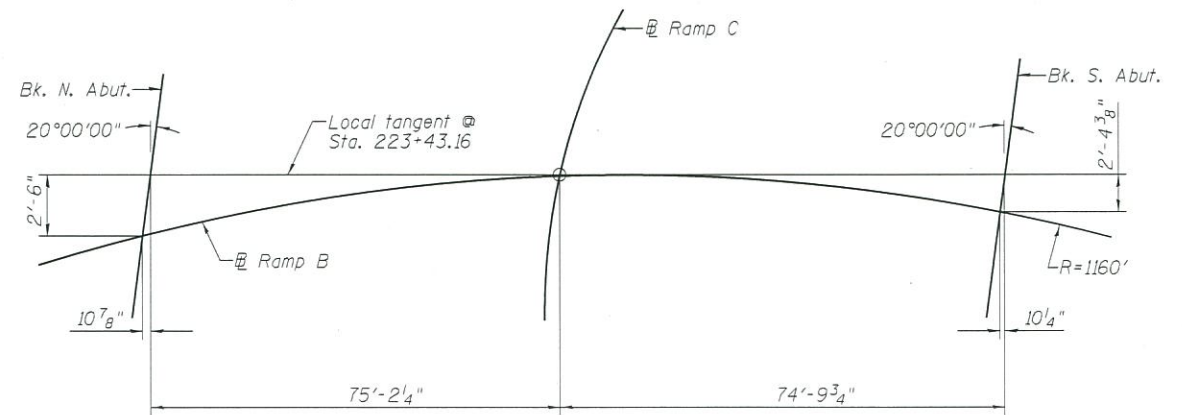
SHEET NO. 1 OF 2 SHEETS

F.A.I. RTE.	SECTION	COUNTY	TOTAL SHEETS	SHEET NO.
CONTRACT NO.				
ILLINOIS FED. AID PROJECT				

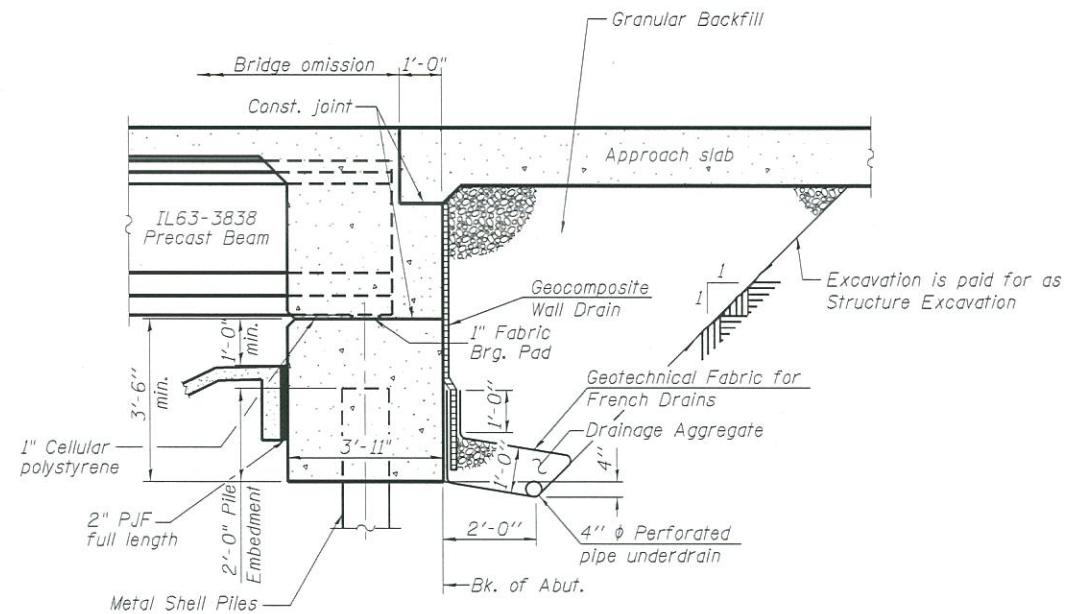


CROSS SECTION
(Looking South)

* Prior to Grinding
** After Grinding



OFFSET SKETCH



SECTION THRU INTEGRAL ABUTMENT
(Horiz. dim. @ Rt. L's)

APPROVED

MAY 04 2017

AS A BASIS FOR
PREPARATION OF DETAILED PLANS

L:\1001\106602\Draw\C600_Sheets\Structural_Sheets\TSL.dwg



USER NAME = Christopher Whitfield	DESIGNED MJL	APR 2017	REVISED
... \D578897-TSL-121_Ramp B over C-3.dgn	CHECKED WLB	APR 2017	REVISED
PLOT SCALE =	DRAWN GLD	APR 2017	REVISED
PLOT DATE =	CHECKED MJL	APR 2017	REVISED

STATE OF ILLINOIS
DEPARTMENT OF TRANSPORTATION

I-57 & I-74 INTERCHANGE
STRUCTURE NO. 010-1005 - GENERAL DETAILS

SHEET NO. 2 OF 2 SHEETS

F.A.I. RTE.	SECTION	COUNTY	TOTAL SHEETS	SHEET NO.
				CONTRACT NO.
ILLINOIS FED. AID PROJECT				