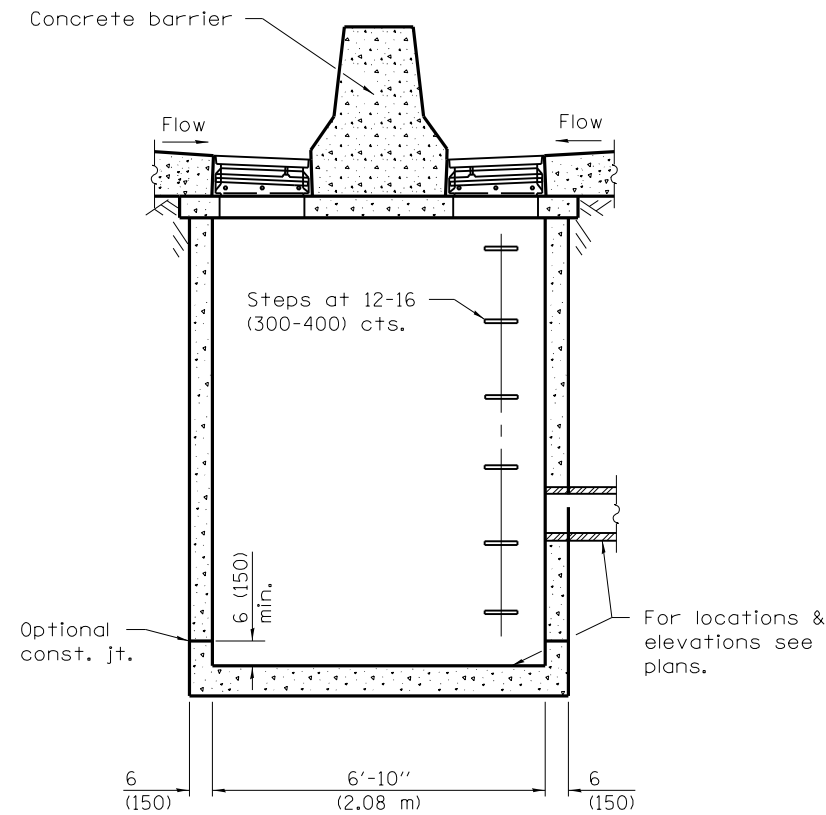
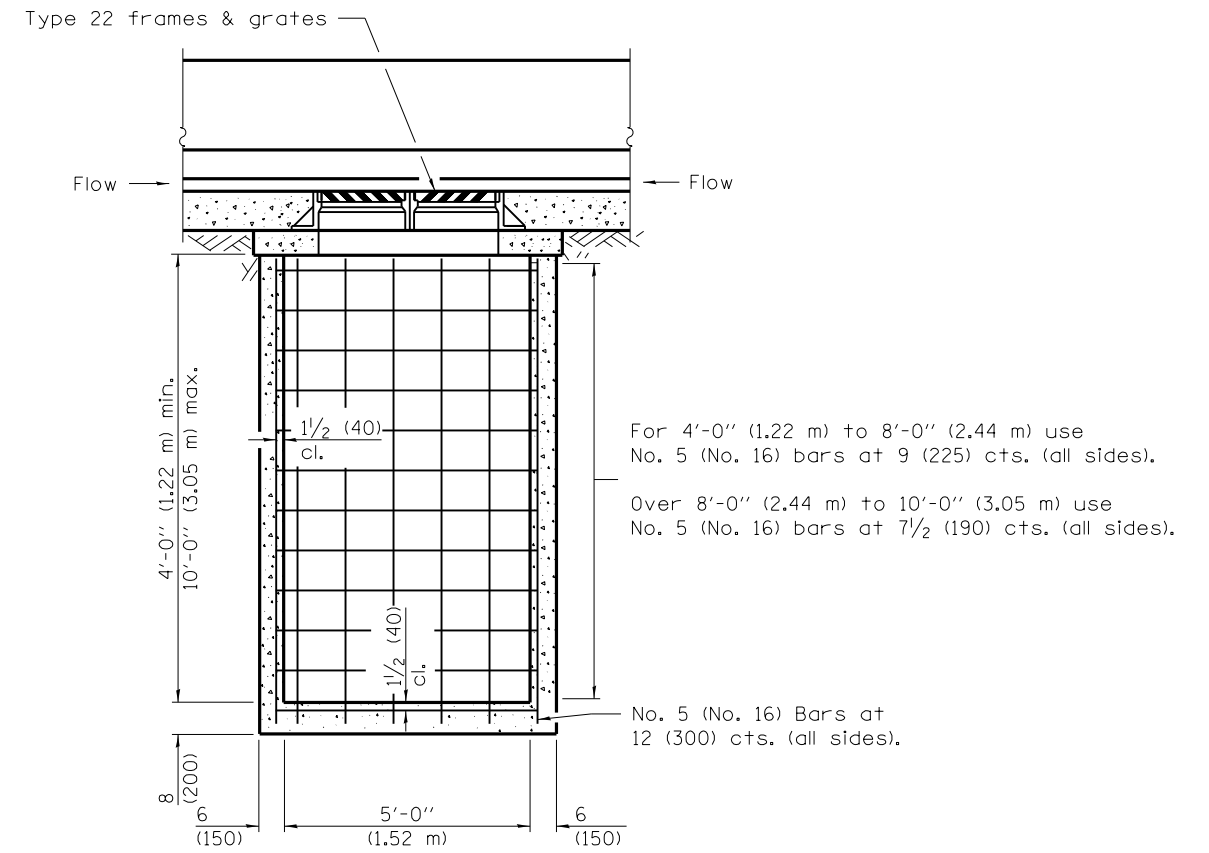


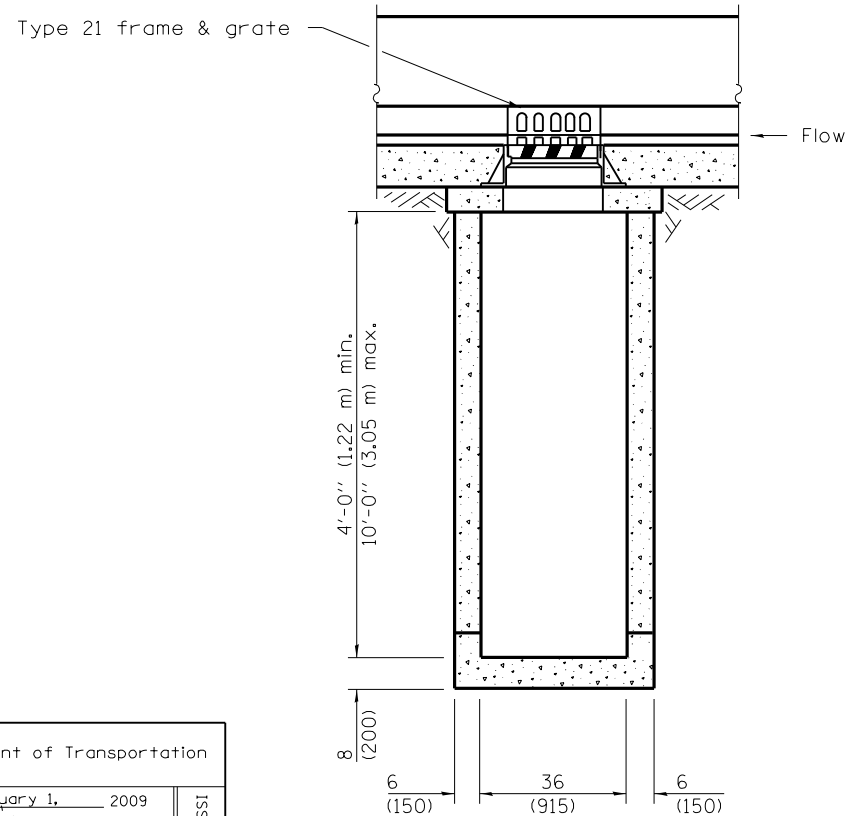
FRONT ELEVATION – TYPE 1



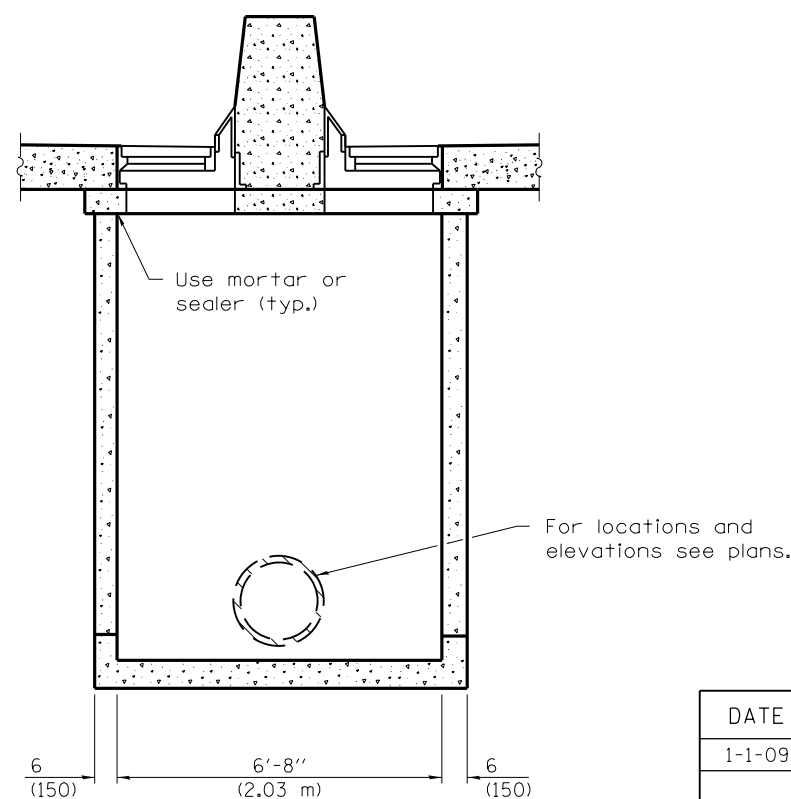
SIDE ELEVATION – TYPE 1 & 2



FRONT ELEVATION – TYPE 2



FRONT ELEVATION – TYPE 3



SIDE ELEVATION – TYPE 3

GENERAL NOTES

These structures are for use with concrete barrier, double face, 32 (815) height (Standard 637001).

The reinforcement shown in the front elevation of the Type 2 is typical for both elevations of all types.

See Standard 602701 for details of steps.

Exposed edges shall be beveled 3/4 (19).

All dimensions are in inches (millimeters) unless otherwise shown.

DATE	REVISIONS
1-1-09	Switched units to English (metric).
4-1-04	Revised to fit F shape barrier.

**DRAINAGE STRUCTURES
TYPES 1, 2 & 3**

(Sheet 1 of 2)

STANDARD 602101-02

Illinois Department of Transportation

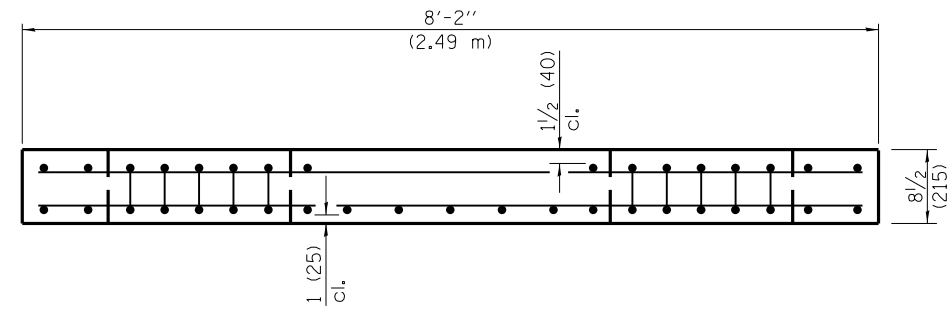
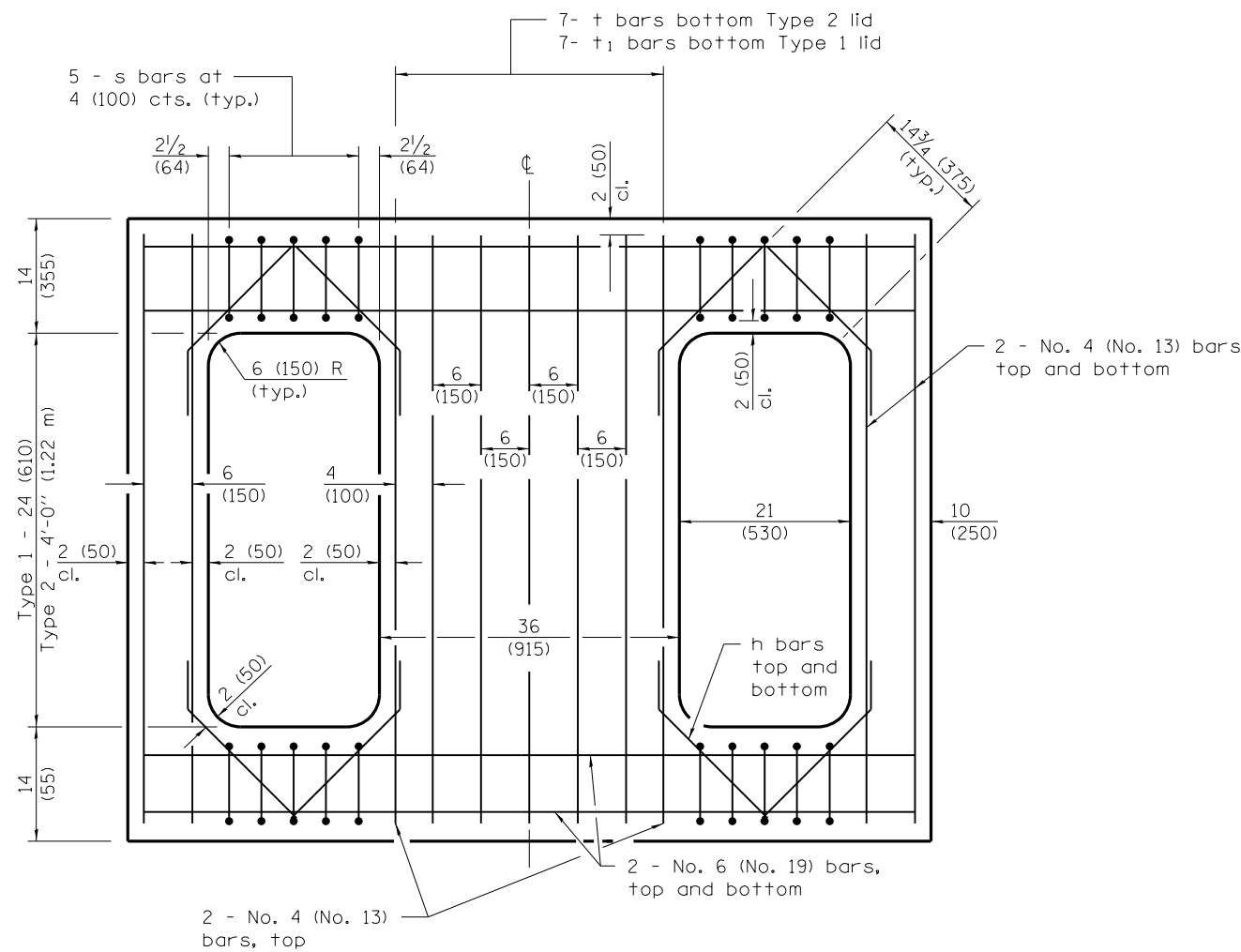
PASSED January 1, 2009

ENGINEER OF POLICY AND PROCEDURES

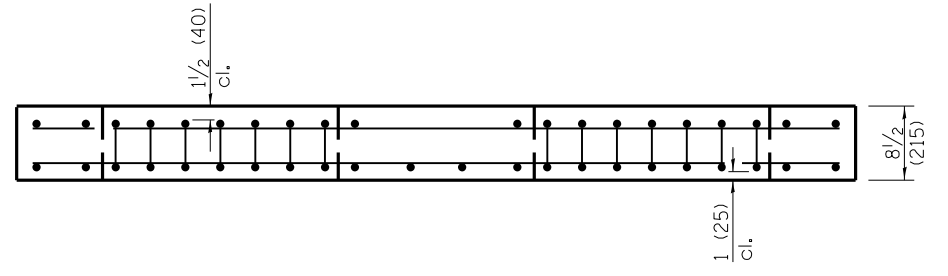
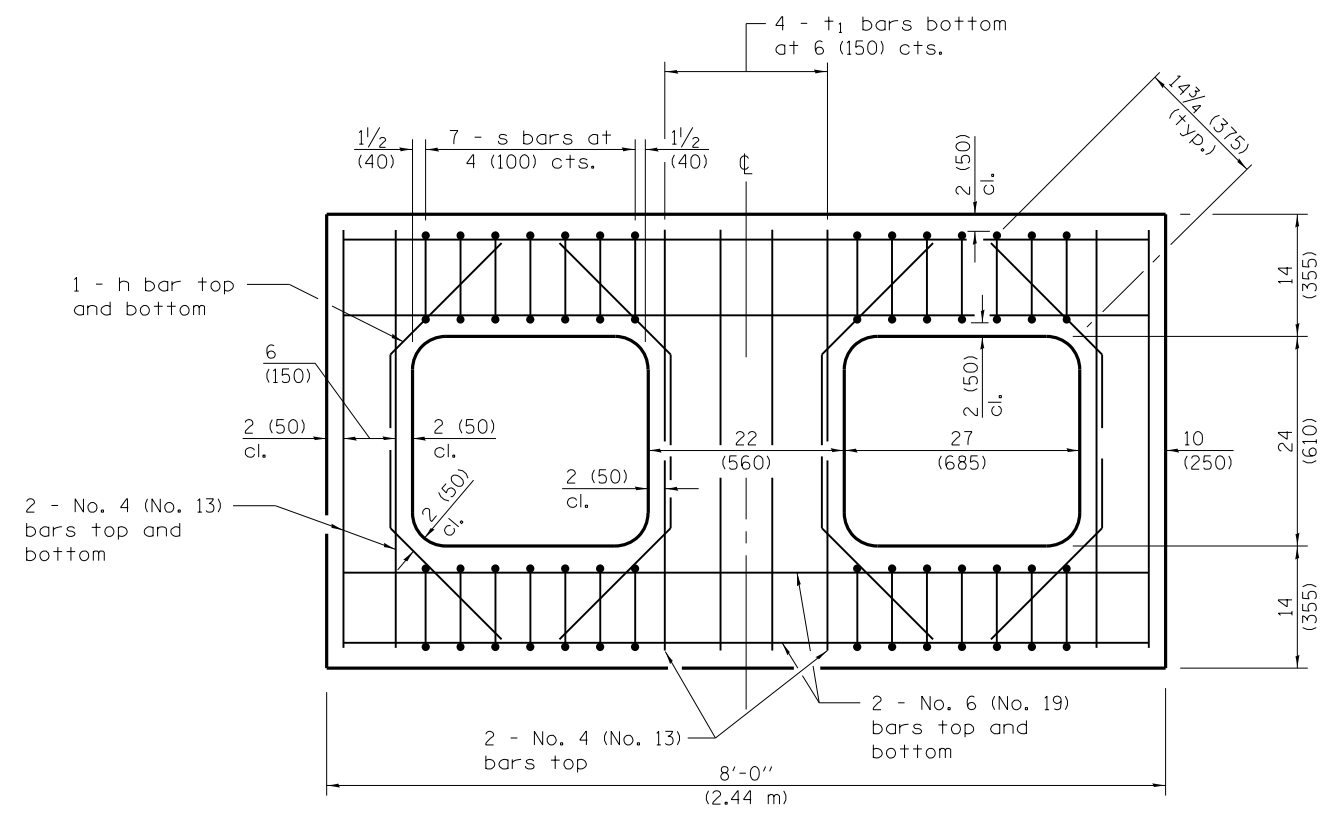
APPROVED January 1, 2009

ENGINEER OF DESIGN AND ENVIRONMENT

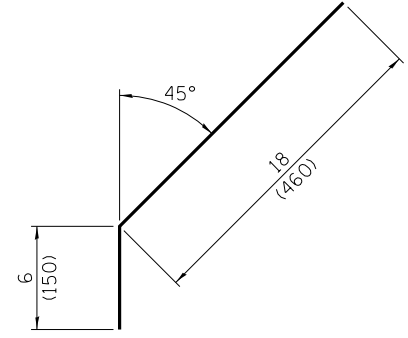
ISSUED 1-1-97



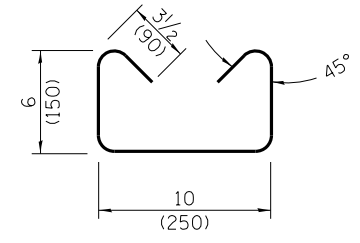
REINFORCED LID - TYPE 1 & 2



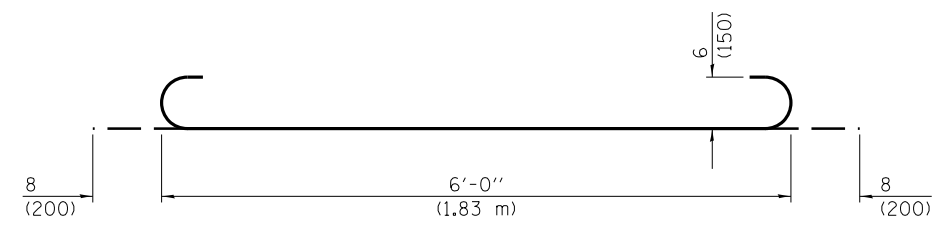
REINFORCED LID - TYPE 3



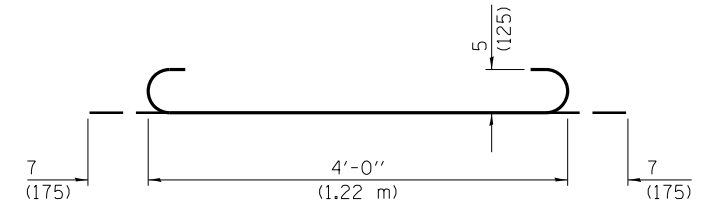
No. 4 (No. 13) Bar h



No. 3 (No. 10) Bar s



No. 6 (No. 19) Bar t



No. 5 (No. 16) Bar t₁

Illinois Department of Transportation

PASSED January 1, 2009

ENGINEER OF POLICY AND PROCEDURES

APPROVED January 1, 2009

ENGINEER OF DESIGN AND ENVIRONMENT

ISSUED 1-1-97

DRAINAGE STRUCTURES

TYPES 1, 2 & 3

(Sheet 2 of 2)

STANDARD 602101-02