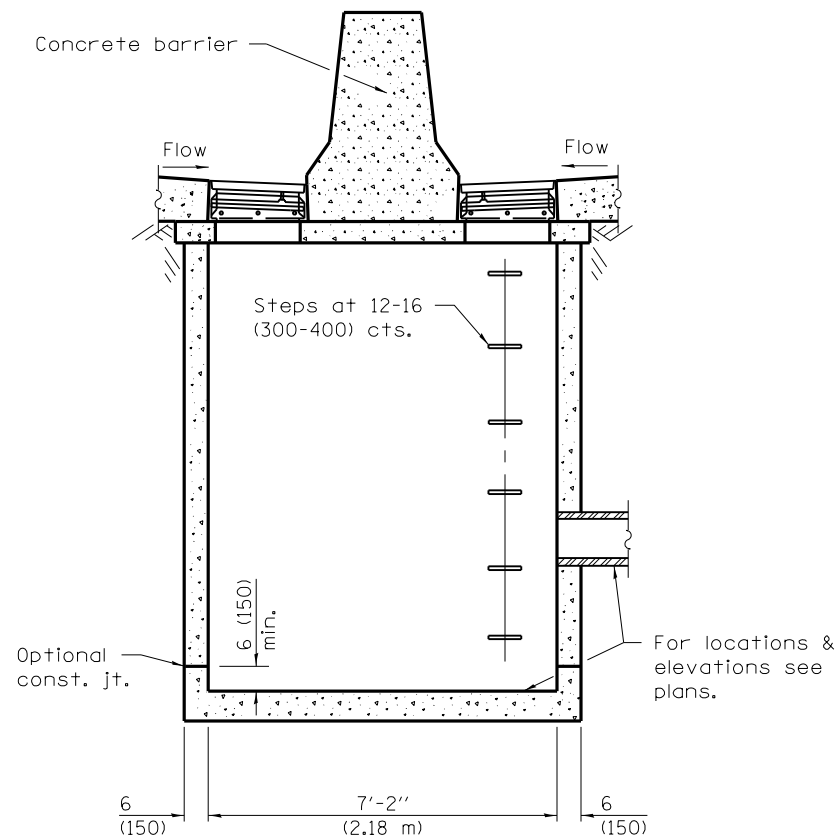
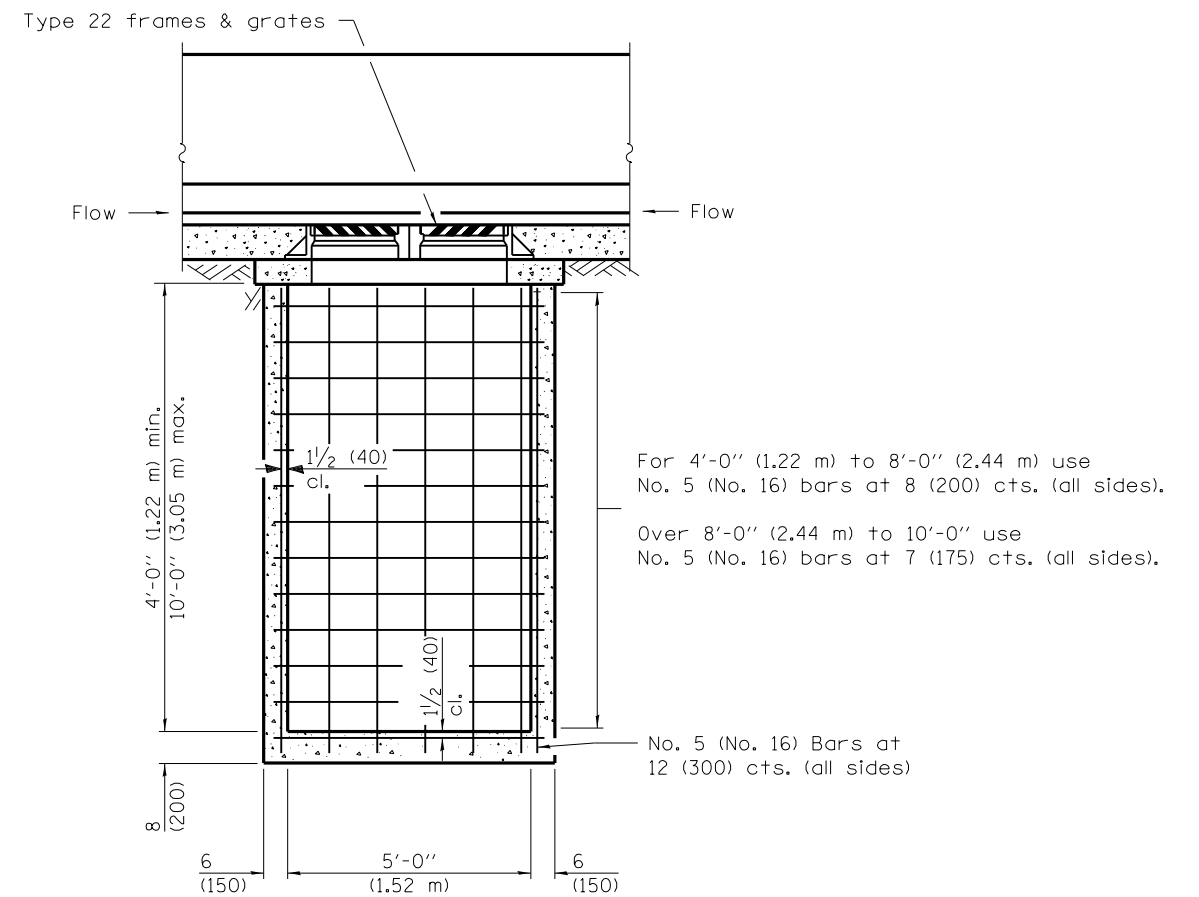


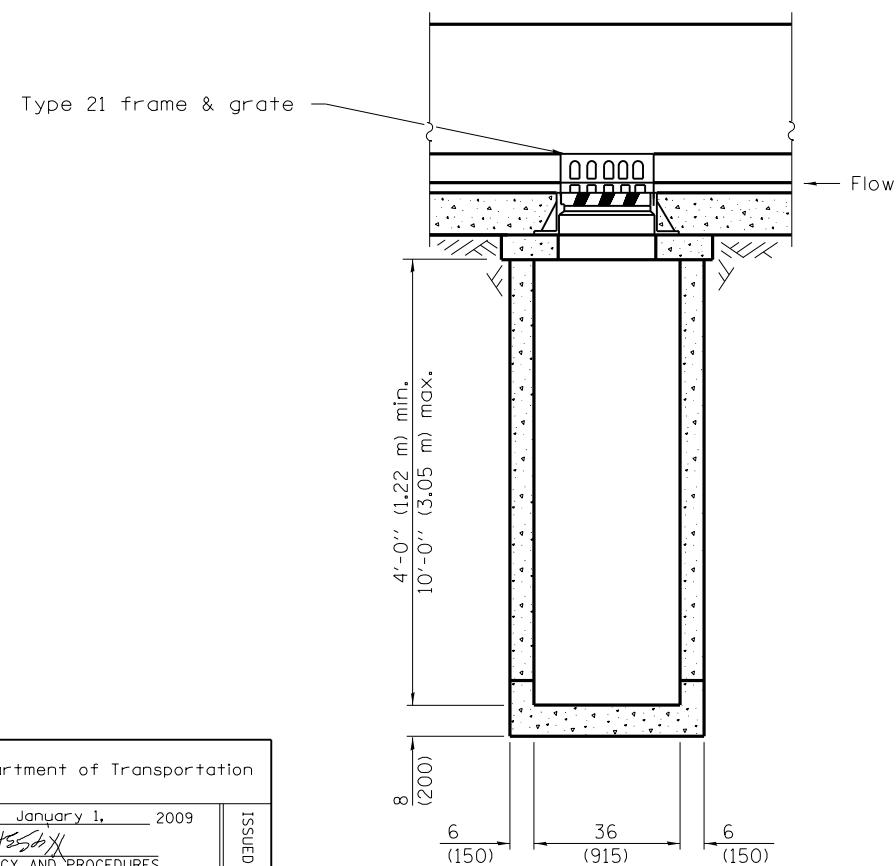
FRONT ELEVATION – TYPE 4



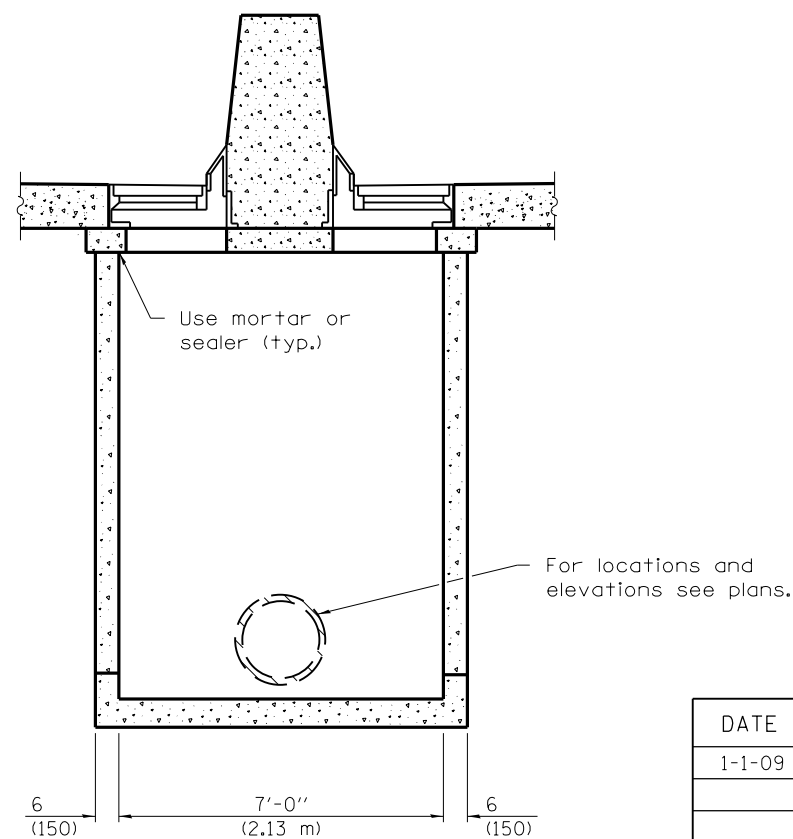
SIDE ELEVATION – TYPE 4 & 5



FRONT ELEVATION – TYPE 5



FRONT ELEVATION – TYPE 6



SIDE ELEVATION – TYPE 6

For 4'-0" (1.22 m) to 8'-0" (2.44 m) use No. 5 (No. 16) bars at 8 (200) cts. (all sides).
 Over 8'-0" (2.44 m) to 10'-0" use No. 5 (No. 16) bars at 7 (175) cts. (all sides).
 No. 5 (No. 16) Bars at 12 (300) cts. (all sides)

GENERAL NOTES

These structures are for use with concrete barrier, double face, 42 (1065) height (Standard 637006).

The reinforcement shown in the front elevation of the Type 5 is typical for both elevations of all types.

See Standard 602701 for details of steps.

Exposed edges shall be beveled 3/4 (19).

All dimensions are in inches (millimeters) unless otherwise shown.

DATE	REVISIONS
1-1-09	Switched units to English (metric).
1-1-04	New standard

**DRAINAGE STRUCTURES
TYPES 4, 5 & 6**

(Sheet 1 of 2)

STANDARD 602106-01

Illinois Department of Transportation

PASSED January 1, 2009

ENGINEER OF POLICY AND PROCEDURES

APPROVED January 1, 2009

ENGINEER OF DESIGN AND ENVIRONMENT

ISSUED 4-1-04

