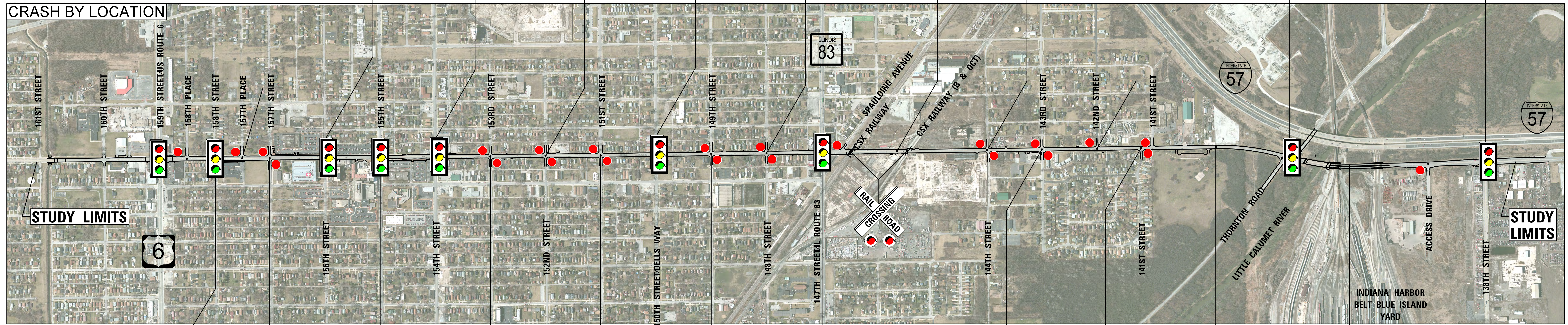


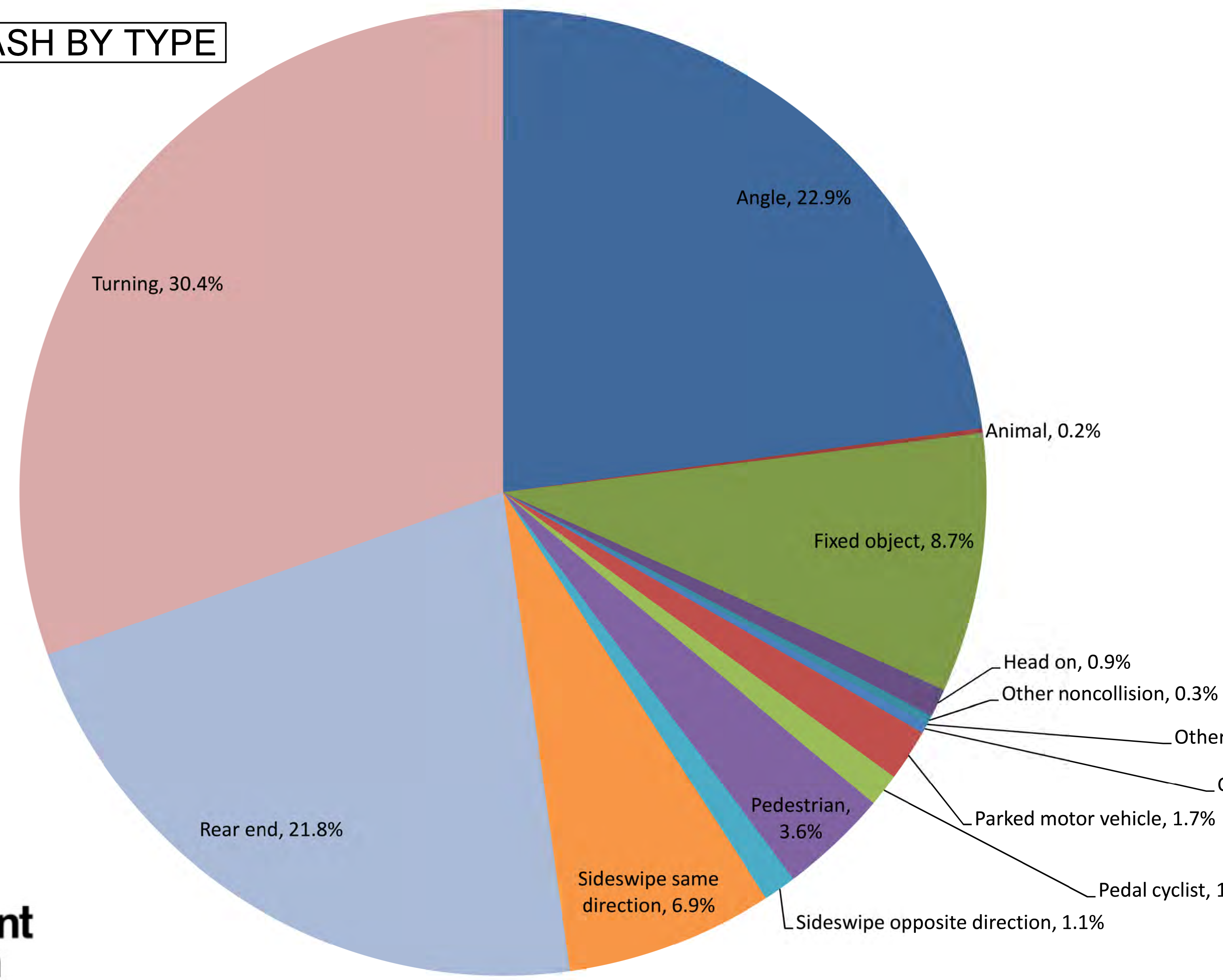
INTERSECTION WOOD ST. / 157TH PL. 7 TOTAL CRASHES 0 K 0 TYPE A 0 TYPE B 0 TYPE C 1 TURNING CRASH 1 REAR END CRASH 4 ANGLE CRASH	INTERSECTION WOOD ST. / 156TH ST. 37 TOTAL CRASHES 0 K 1 TYPE A 5 TYPE B 3 TYPE C 20 TURNING CRASH 10 REAR END CRASH 10 ANGLE CRASH	INTERSECTION WOOD ST. / 154TH ST. 40 TOTAL CRASHES 0 K 1 TYPE A 5 TYPE B 7 TYPE C 9 TURNING CRASH 9 REAR END CRASH 9 ANGLE CRASH	INTERSECTION WOOD ST. / 152ND ST. 9 TOTAL CRASHES 1 K 0 TYPE A 0 TYPE B 4 TYPE C 2 TURNING CRASH 1 REAR END CRASH 1 ANGLE CRASH	INTERSECTION WOOD ST. / 150TH ST. 61 TOTAL CRASHES 0 K 3 TYPE A 13 TYPE B 8 TYPE C 27 TURNING CRASH 7 REAR END CRASH 15 ANGLE CRASH	INTERSECTION WOOD ST. / 148TH ST. 38 TOTAL CRASHES 0 K 3 TYPE A 6 TYPE B 9 TYPE C 9 TURNING CRASH 2 REAR END CRASH 19 ANGLE CRASH	SEGMENT SPAULDING AVE. TO 144TH ST. 4 TOTAL CRASHES 0 K 0 TYPE A 1 TYPE B 0 TYPE C 0 TURNING CRASH 2 REAR END CRASH 0 ANGLE CRASH	INTERSECTION WOOD ST. / 144TH ST. 10 TOTAL CRASHES 0 K 0 TYPE A 3 TYPE B 3 TYPE C 2 TURNING CRASH 3 REAR END CRASH 2 ANGLE CRASH	INTERSECTION WOOD ST. / 142ND ST. 2 TOTAL CRASHES 0 K 0 TYPE A 0 TYPE B 1 TYPE C 0 TURNING CRASH 0 REAR END CRASH 0 ANGLE CRASH	SEGMENT THORNTON RD. 73 TOTAL CRASHES 0 K 6 TYPE A 12 TYPE B 8 TYPE C 39 TURNING CRASH 16 REAR END CRASH 8 ANGLE CRASH	INTERSECTION WOOD ST. / 138TH ST. 51 TOTAL CRASHES 0 K 2 TYPE A 6 TYPE B 9 TYPE C 15 TURNING CRASH 23 REAR END CRASH 1 ANGLE CRASH
---	---	--	---	---	---	---	--	---	--	--

CRASH BY LOCATION



INTERSECTION WOOD ST. / 158TH ST. 6 TOTAL CRASHES 0 K 0 TYPE A 2 TYPE B 2 TYPE C 0 TURNING CRASH 3 REAR END CRASH 0 ANGLE CRASH	INTERSECTION WOOD ST. / 157TH ST. 7 TOTAL CRASHES 0 K 0 TYPE A 4 TYPE B 0 TYPE C 3 TURNING CRASH 3 REAR END CRASH 4 ANGLE CRASH	INTERSECTION WOOD ST. / 155TH ST. 29 TOTAL CRASHES 0 K 2 TYPE A 11 TYPE B 8 TYPE C 9 TURNING CRASH 3 REAR END CRASH 12 ANGLE CRASH	INTERSECTION WOOD ST. / 153TH ST. 6 TOTAL CRASHES 0 K 1 TYPE A 0 TYPE B 1 TYPE C 2 TURNING CRASH 1 REAR END CRASH 0 ANGLE CRASH	INTERSECTION WOOD ST. / 151ST ST. 33 TOTAL CRASHES 1 K 7 TYPE A 5 TYPE B 7 TYPE C 5 TURNING CRASH 2 REAR END CRASH 17 ANGLE CRASH	INTERSECTION WOOD ST. / 149TH ST. 2 TOTAL CRASHES 0 K 0 TYPE A 0 TYPE B 1 TYPE C 0 TURNING CRASH 0 REAR END CRASH 2 ANGLE CRASH	INTERSECTION WOOD ST. / IL ROUTE 83/147TH ST. 96 TOTAL CRASHES 0 K 2 TYPE A 7 TYPE B 6 TYPE C 21 TURNING CRASH 26 REAR END CRASH 25 ANGLE CRASH	INTERSECTION WOOD ST. / 144TH ST. 10 TOTAL CRASHES 0 K 0 TYPE A 3 TYPE B 3 TYPE C 2 TURNING CRASH 3 REAR END CRASH 2 ANGLE CRASH	INTERSECTION WOOD ST. / 141ST ST. 6 TOTAL CRASHES 0 K 0 TYPE A 2 TYPE B 0 TYPE C 0 TURNING CRASH 2 REAR END CRASH 0 ANGLE CRASH	SEGMENT 141ST ST. TO THORNTON RD. 4 TOTAL CRASHES 0 K 3 TYPE A 2 TYPE B 0 TYPE C 1 TURNING CRASH 0 REAR END CRASH 0 ANGLE CRASH	SEGMENT THORNTON RD. TO ACCESS DR. 13 TOTAL CRASHES 0 K 2 TYPE A 1 TYPE B 1 TYPE C 3 TURNING CRASH 2 REAR END CRASH 0 ANGLE CRASH
---	---	--	---	---	---	---	--	---	---	---

CRASH BY TYPE



Crash Type	Number of Crashes	Number of Injury Crashes	Number of Fatal Crashes
Angle	145	63	0
Animal	1	1	0
Fixed object	55	13	0
Head on	6	2	0
Other noncollision	2	0	0
Other object / Train	0	0	0
Overturned	2	0	0
Parked motor vehicle	11	2	0
Pedal cyclist	7	7	0
Pedestrian	23	19	2
Rear end	138	27	0
Sideswipe opposite direction	7	1	0
Sideswipe same direction	44	8	0
Turning	193	68	0
Total (2006-2011)	634	211	2

LEGEND

- K (FATAL)** A TRAFFIC CRASH INVOLVING A MOTOR VEHICLE IN WHICH AT LEAST ONE PERSON DIES WITHIN 30 DAYS OF THE CRASH
- TYPE A INJURY** INCAPACITATING INJURY - ANY INJURY, OTHER THAN A FATAL INJURY, WHICH PREVENTS THE INJURED PERSON FROM WALKING, DRIVING, OR NORMALLY CONTINUING THE ACTIVITIES HE/SHE WAS CAPABLE OF PERFORMING BEFORE THE INJURY OCCURRED. THIS INCLUDES SEVERE LACERATIONS, BROKEN/DISTORTED LIMBS, SKULL INJURIES, CHEST INJURIES, ABDOMINAL INJURIES.
- TYPE B INJURY** NONINCAPACITATING INJURY - ANY INJURY, OTHER THAN A FATAL OR INCAPACITATING INJURY, WHICH IS EVIDENT TO OBSERVERS AT THE SCENE OF THE CRASH. THIS INCLUDES LUMPS ON THE HEAD, ABRASIONS, BRUISES, MINOR LACERATIONS.
- TYPE C INJURY** REPORTED, NOT EVIDENT - ANY INJURY REPORTED OR CLAIMED WHICH IS NOT LISTED ABOVE. THIS INCLUDES MOMENTARY UNCONSCIOUSNESS, CLAIMS OF INJURIES NOT EVIDENT, LIMPING, COMPLAINTS OF PAIN, NAUSEA, HYSTERIA.

- EXISTING TRAFFIC SIGNAL
- UNSIGNALIZED INTERSECTION (STOP CONTROLLED)



www.WoodStreetStudy.org

Wood Street/Ashland Avenue
South of US Route 6 (159th Street) to 138th Street

2006-2011 ROADWAY CRASHES