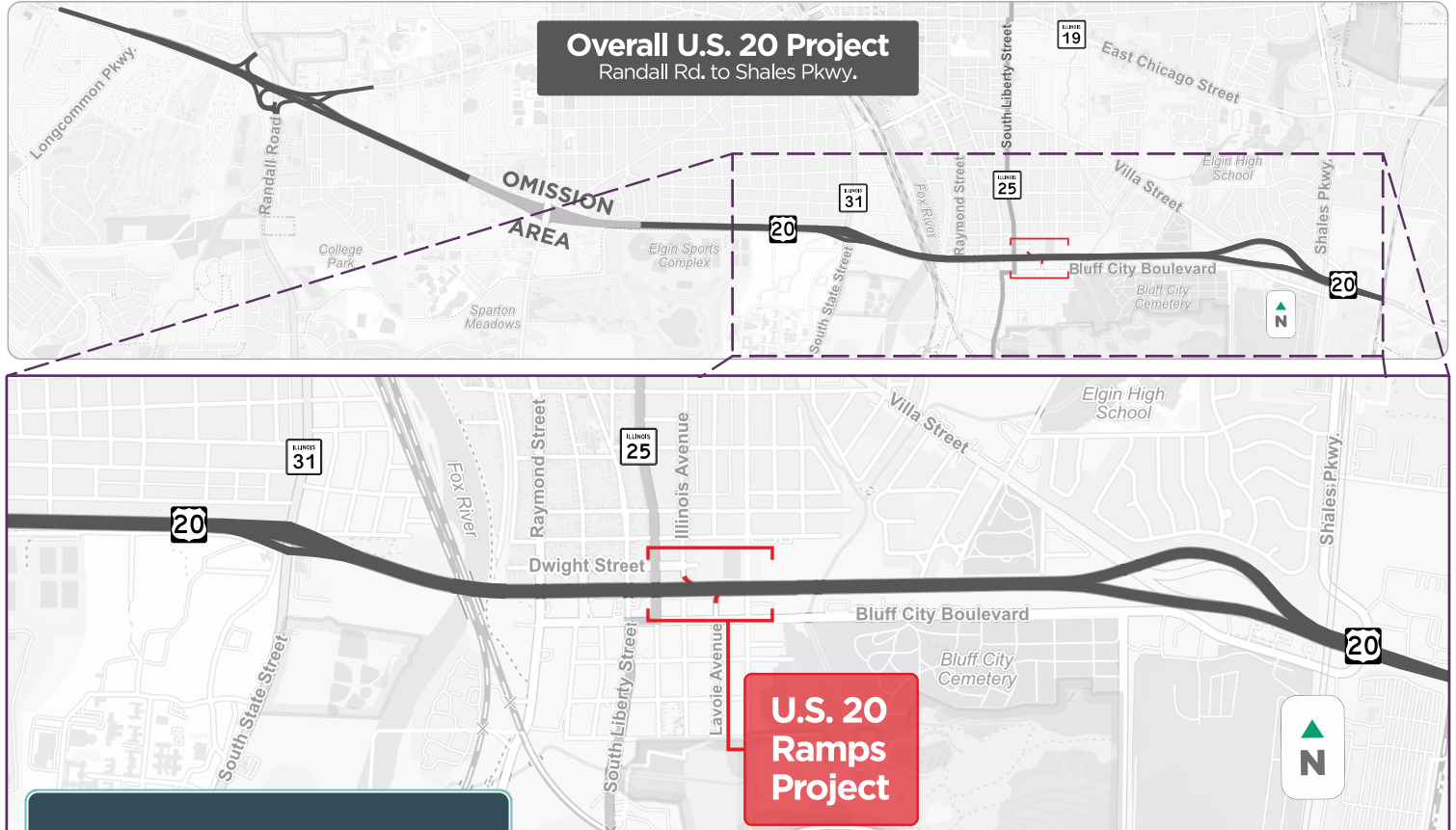




The Illinois Department of Transportation (IDOT) is conducting preliminary engineering and environmental studies (Phase I) for the improvement of the US 20 ramps at Illinois Avenue and Lavoie Avenue in Elgin. The proposed project is anticipated to consist of closing the existing US 20 ramps at Illinois Avenue and Lavoie Avenue and modifying the existing roadways to accommodate the ramp closures.

The US 20 Ramps project limits are located within the limits of the ongoing overall US 20 project that extends from west of Randall Road to east of Shales Parkway. The overall US 20 (Randall Rd. to Shales Pkwy.) project consists of roadway and bridge rehabilitation to improve safety and mobility along the corridor.



**Phase I**  
Preliminary Engineering & Environmental Studies

- ✔ Define Existing Conditions
- ✔ Identify & Evaluate Alternatives
- Review Recommended Alternatives

**2023 - 2024**

Current Phase

Phase I of the overall US 20 (Randall Rd. to Shales Pkwy.) project identified the Illinois Avenue and Lavoie Avenue ramps for needed infrastructure upgrades. **The US 20 Ramps project was then established as an extension of the overall US 20 (Randall Rd. to Shales Pkwy.) project to further analyze and address deficient elements along the ramps.**

The US 20 Ramps project is included in IDOT's FY 2024-2029 Proposed Highway Improvement Program. Current engineering efforts are targeting construction in the middle years of the program contingent upon plan readiness and funding availability through future annual legislative appropriations.

**Comment By May, 16 2024**

- Comment Form
- Oral Submission

**Project Website**  
• <https://idot.illinois.gov/us20ramps.html>

**Email (For questions or information)**  
• DOT.US20Ramps@illinois.gov

Use your phone camera to hover over the QR code & submit an online comment.

