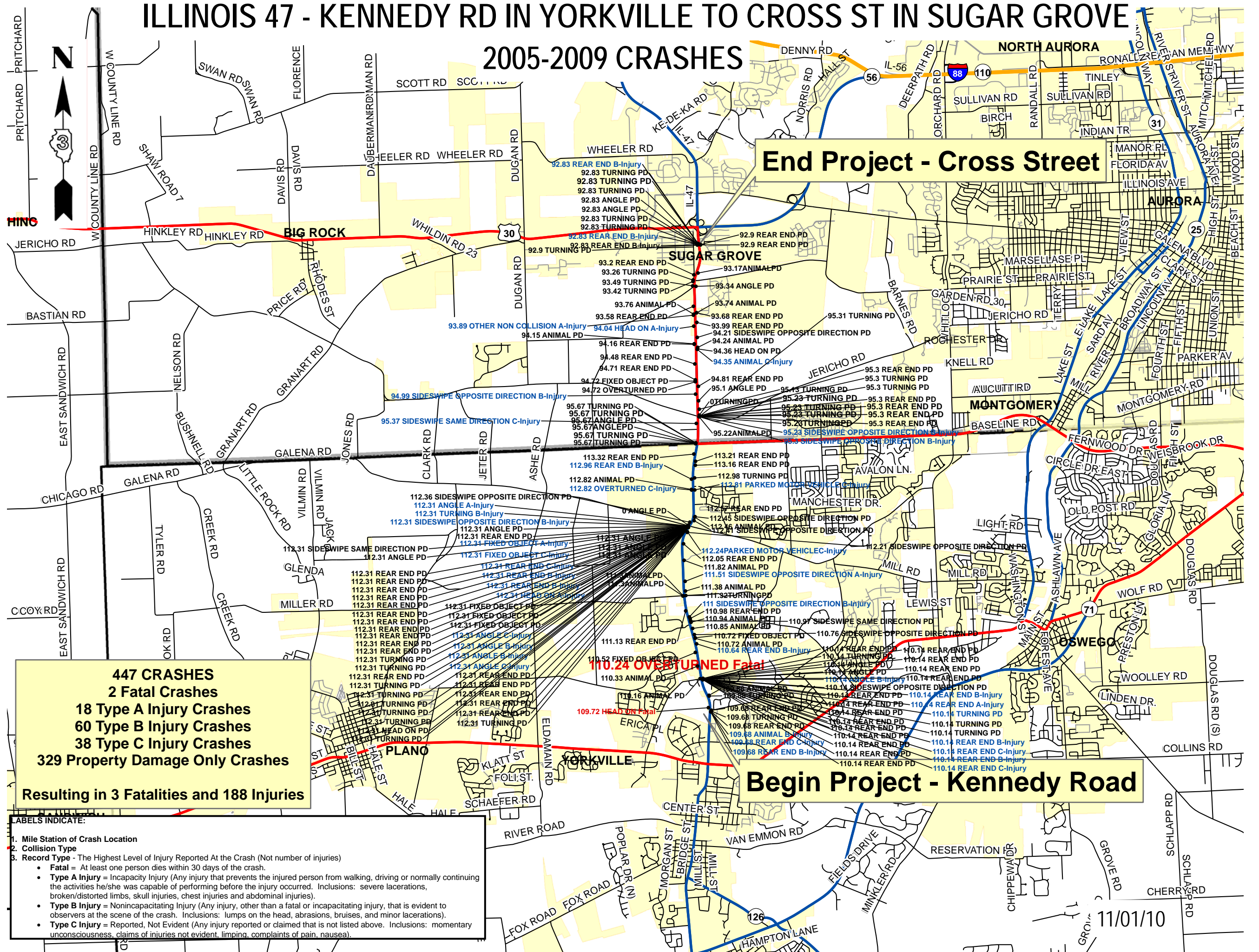


# ILLINOIS 47 - KENNEDY RD IN YORKVILLE TO CROSS ST IN SUGAR GROVE

## 2005-2009 CRASHES



**End Project - Cross Street**

**Begin Project - Kennedy Road**

**447 CRASHES**  
**2 Fatal Crashes**  
**18 Type A Injury Crashes**  
**60 Type B Injury Crashes**  
**38 Type C Injury Crashes**  
**329 Property Damage Only Crashes**

**Resulting in 3 Fatalities and 188 Injuries**

- LABELS INDICATE:**
1. Mile Station of Crash Location
  2. Collision Type
  3. Record Type - The Highest Level of Injury Reported At the Crash (Not number of injuries)
    - **Fatal** = At least one person dies within 30 days of the crash.
    - **Type A Injury** = Incapacity Injury (Any injury that prevents the injured person from walking, driving or normally continuing the activities he/she was capable of performing before the injury occurred. Inclusions: severe lacerations, broken/distorted limbs, skull injuries, chest injuries and abdominal injuries).
    - **Type B Injury** = Nonincapacitating Injury (Any injury, other than a fatal or incapacitating injury, that is evident to observers at the scene of the crash. Inclusions: lumps on the head, abrasions, bruises, and minor lacerations).
    - **Type C Injury** = Reported, Not Evident (Any injury reported or claimed that is not listed above. Inclusions: momentary unconsciousness, claims of injuries not evident, limping, complaints of pain, nausea).

11/01/10