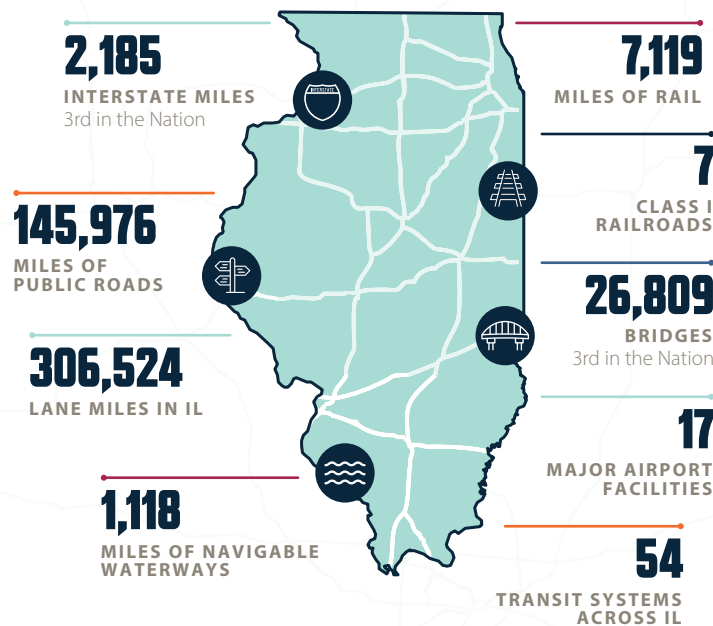




# DATA-DRIVEN DECISIONS TOOL FOR ILLINOIS



The Illinois Department of Transportation (IDOT) developed the Data-Driven Decisions tool. The tool helped IDOT make investment decisions for capacity projects throughout the State. The effort is to select projects which add the most value to the State and its communities, while at the same time increasing transparency in the project selection process. The concept of Data-Driven Decisions for project selection is used throughout the nation and encouraged by the U.S. Department of Transportation. The Department evaluated 34 projects for inclusion in the State Fiscal Year 2023-2028 Highway Improvement Program (MYP).



## WHY was the Tool Developed?

Illinois is one of the largest economies in the United States and that is greatly attributed to the vast transportation network the State offers. Transportation funding is limited and a majority of IDOT's funds are allocated toward system maintenance projects and not capacity projects. In order to increase transparency and select projects within an enhanced transparent manner IDOT developed the tool.

## HOW was the Tool Developed?

Development of the tool went through a rigorous process with IDOT utilizing literature, standards and expert knowledge throughout the state and across the nation. IDOT developed the tool with guidance from the following:

- Existing planning documents, including IDOT's Long-Range Transportation Plan
- Federal resources urging the use of performance based project selection set forth by Moving Ahead for Progress in the 21st Century Act (MAP-21)
- Counsel from state and national experts including transportation stakeholders and the Federal Highway Administration
- Input from the local and regional leaders, and the public
- Accepted industry metrics

## WHAT is the Tool?

IDOT developed a process which will select projects based on **five goal areas** and **eleven selection criteria**. These goals and criteria will help IDOT make investment decisions on capacity projects in a transparent and equitable manner.



### Traffic Operations / Congestion

#### CRITERIA

#### Annual Average Daily Traffic (AADT)

A measure of change of the mean traffic volume across all days for a year for a given location along a road

#### CRITERIA

#### Change in Annual Vehicle Miles Traveled (AVMT)

A measure of the amount of vehicular travel in a geographic region over a given period of time

#### CRITERIA

#### Travel Time Index

The ratio of the travel time during the peak period to the time required to make the same trip at free-flow speeds.



### Economic Development

#### CRITERIA

#### National Highway Freight Network

Is the project on the National Highway Freight Network as defined by the Federal Highway Administration and the FAST Act?

#### CRITERIA

#### Major Development

Does the project support access to a major development?

#### CRITERIA

#### Intermodal Accessibility

Is there an intermodal facility within 3 miles of the project?



### Regional Rating

#### CRITERIA

#### Subjective portion allowing regional input, to consider local factors which may not be shown in data

- Allows for input from IDOT district staff on projects
- IDOT district staff work directly with local municipalities, counties and Metropolitan Planning Organizations



### Safety

#### CRITERIA

#### Crash Frequency

A measure of the number of crashes occurring within a specific jurisdiction, on a roadway segment, or at an intersection.



### Environmental Impacts / Livability

#### CRITERIA

#### Environmental Justice

Consideration of whether the project is located in an area identified as minority population, low income, or both based on the measures identified by the Illinois Environmental Protection Agency

#### CRITERIA

#### Level of Environmental Impact Analysis Required

How much will this project potentially affect the environment?

- Categorical Exclusion (CE)
- Environmental Assessment (EA) / Finding of No Significant Impacts (FONSI)
- Environmental Impact Statement (EIS)

#### CRITERIA

#### Resiliency

If a project has been impacted by an emergency event in the last 20 years.

## Input Received

The Department conducted outreach in the fall of 2021 and based on that have made updates to the tool. Documentation of how the tool works, lessons learned, and the outcome of comments is available on our website at [Data-Driven Decisions Webpage](#). This tool will remain an iterative process, feel free to continue to provide feedback by contacting us at [DOT.STIP@Illinois.gov](mailto:DOT.STIP@Illinois.gov)

**Coming Soon:** IDOT is working to develop these criteria. Significant input has been received and if there is additional feedback, do not hesitate to reach out to IDOT at [DOT.STIP@Illinois.gov](mailto:DOT.STIP@Illinois.gov)

#### Emissions

Will this project help reduce vehicle emissions and improve overall air quality?

#### Equity

How much will this project impact equity?

- Access to transit
- Housing and transportation cost index
- Emissions
- Other