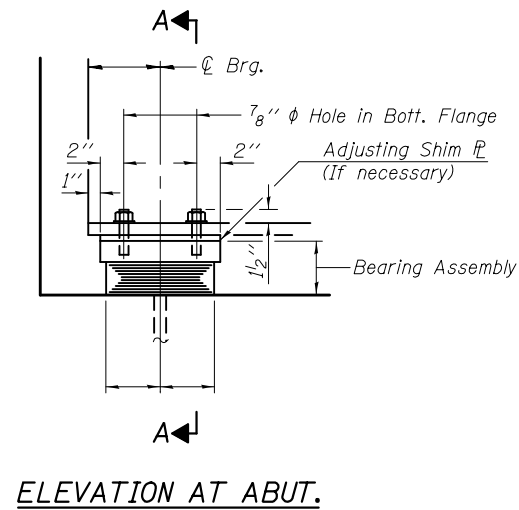
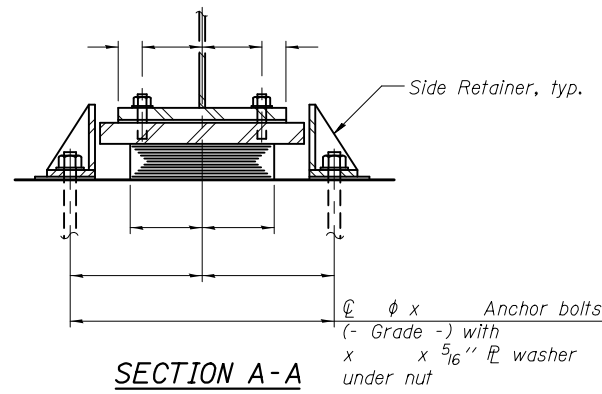


CELL / MODEL NAME	DESCRIPTION	DATE
I-2E-1	Type I elastomeric bearing	11/22/2016
I-2E-2	Type II elastomeric bearing	11/22/2016
I-2E-3	Type III elastomeric bearing	11/22/2016

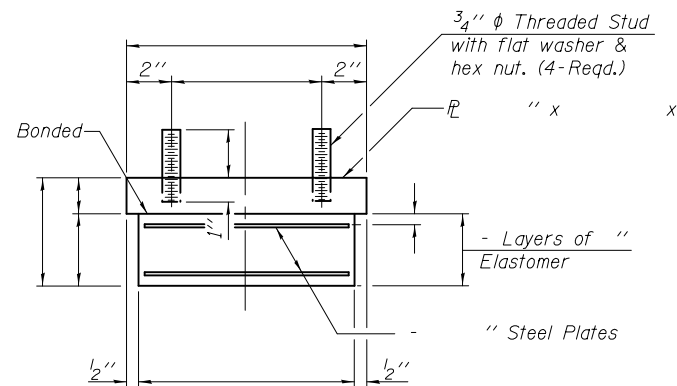


**ELEVATION AT ABUT.**



**SECTION A-A**

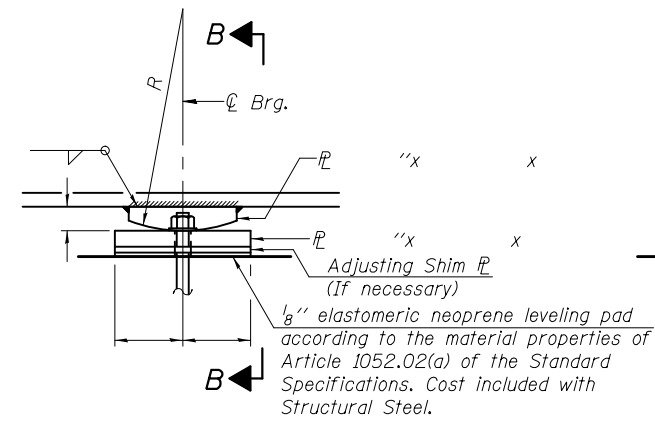
**TYPE I ELASTOMERIC EXP. BRG.**



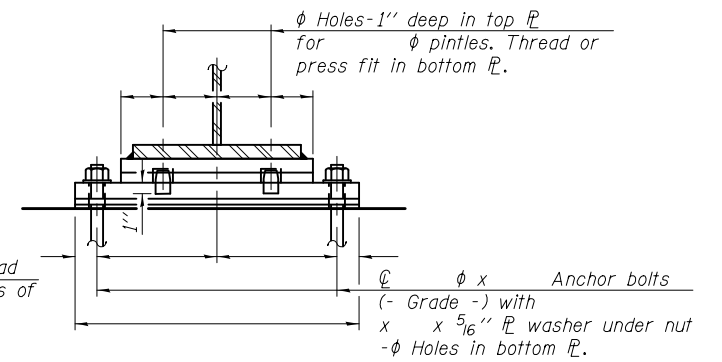
**BEARING ASSEMBLY**

Note:  
Shim plates shall not be placed under Bearing Assembly.

Notes:  
Anchor bolts shall be ASTM F1554 all-thread (or an Engineer-approved alternate material) of the grade(s) and diameter(s) specified. The corresponding specified grade of AASHTO M314 anchor bolts may be used in lieu of ASTM F1554.  
Side retainers and other steel members required for the elastomeric bearing assembly shall be included in the cost of Elastomeric Bearing Assembly, Type I.  
Beams shall be braced for stability during erection and remain braced until deck is poured and cured.  
Anchor bolts and side retainers at all supports shall be installed as each member is erected unless an equivalent temporary means of lateral restraint is used.

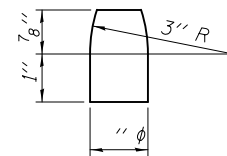


**ELEVATION AT PIER**

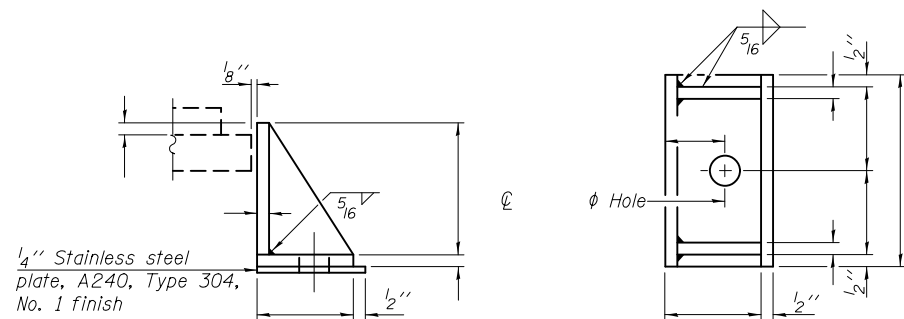


**SECTION B-B**

**FIXED BEARING**



**PINTLE**



**SIDE RETAINER**  
Equivalent rolled angle with stiffeners will be allowed in lieu of welded plates.

**BILL OF MATERIAL**

Item	Unit	Total
Elastomeric Bearing Assembly Type I	Each	
Anchor Bolts	Each	

I-2E-1

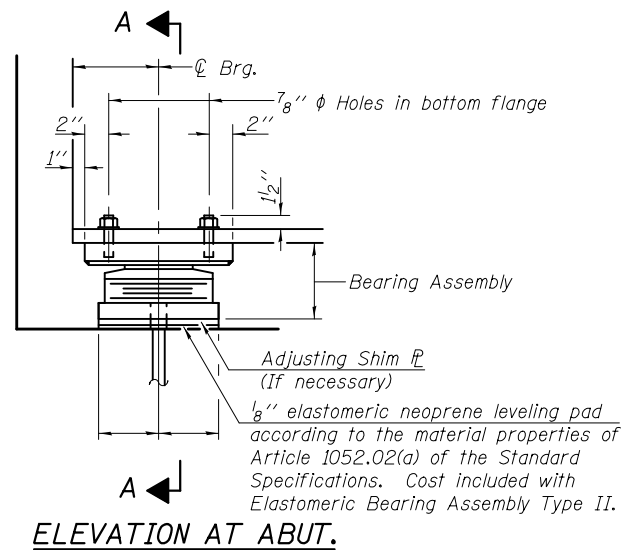
11-22-2016

FILE NAME =	USER NAME =	DESIGNED -	REVISED -
		CHECKED -	REVISED -
	PLOT SCALE =	DRAWN -	REVISED -
	PLOT DATE =	CHECKED -	REVISED -

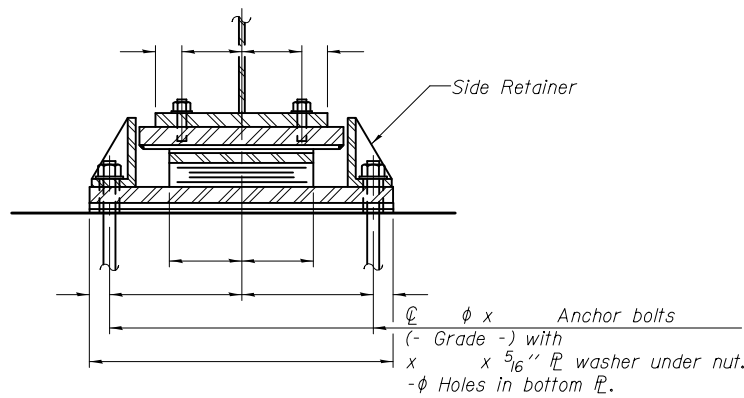
**STATE OF ILLINOIS  
DEPARTMENT OF TRANSPORTATION**

**BEARING DETAILS  
STRUCTURE NO.**

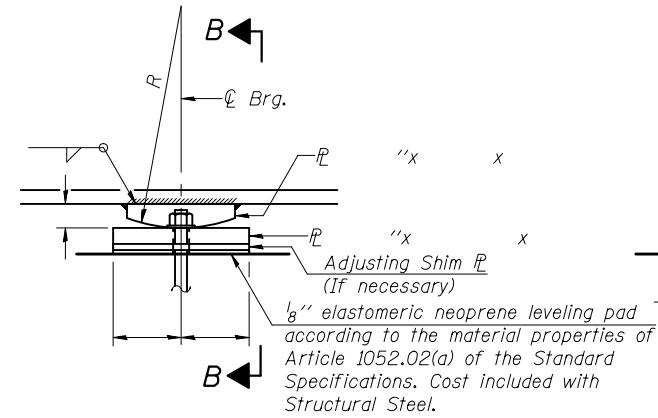
F.A. RTE.	SECTION	COUNTY	TOTAL SHEETS	SHEET NO.
CONTRACT NO.				
ILLINOIS FED. AID PROJECT				



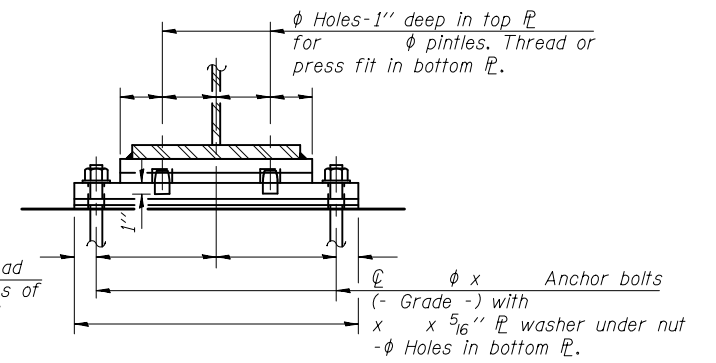
**ELEVATION AT ABUT.**



**SECTION A-A**



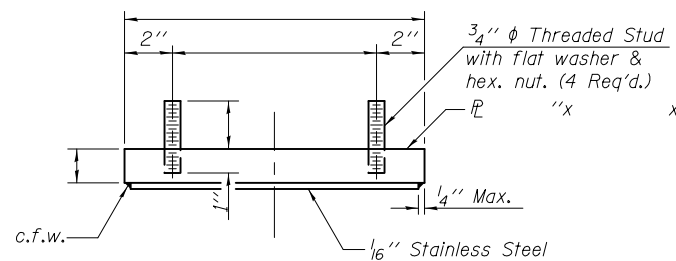
**ELEVATION AT PIER**



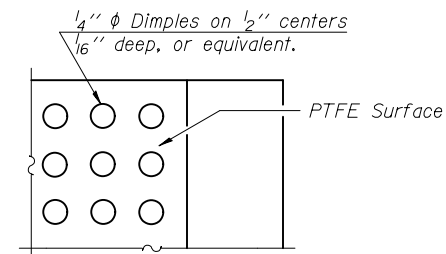
**SECTION B-B**

**TYPE II ELASTOMERIC EXP. BRG.**

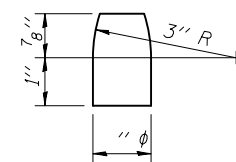
**FIXED BEARING**



**TOP BEARING ASSEMBLY**



**PLAN-PTFE SURFACE**



**PINTLE**

**Notes:**  
Anchor bolts shall be ASTM F1554 all-thread (or an Engineer-approved alternate material) of the grade(s) and diameter(s) specified. The corresponding specified grade of AASHTO M314 anchor bolts may be used in lieu of ASTM F1554.

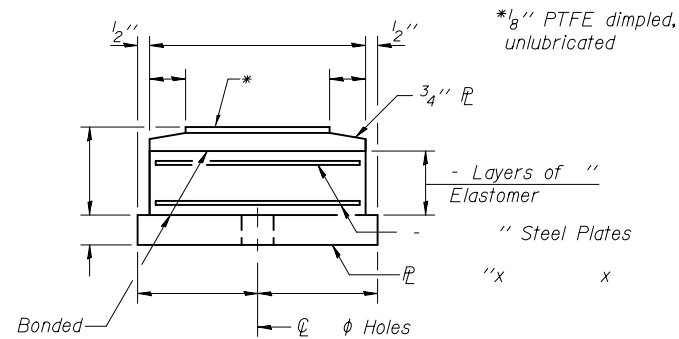
Side retainers and other steel members required for the elastomeric bearing assembly shall be included in the cost of Elastomeric Bearing Assembly, Type II.

The 1/8" PTFE sheet shall be bonded directly to the top steel plate with a two-component, medium viscosity epoxy resin, conforming to the requirements of the Federal Specification MMM-A-134, Type I. The bond agent shall be applied on the full area of the contact surfaces.

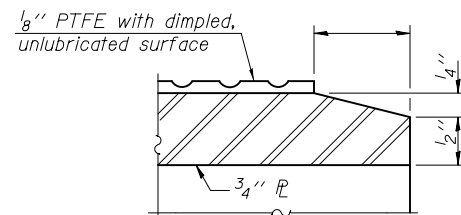
Bonding of 1/8" PTFE sheet during vulcanizing process will be permitted provided the process and method of adjusting assembly height is approved by the Engineer.

Beams shall be braced for stability during erection and remain braced until deck is poured and cured.

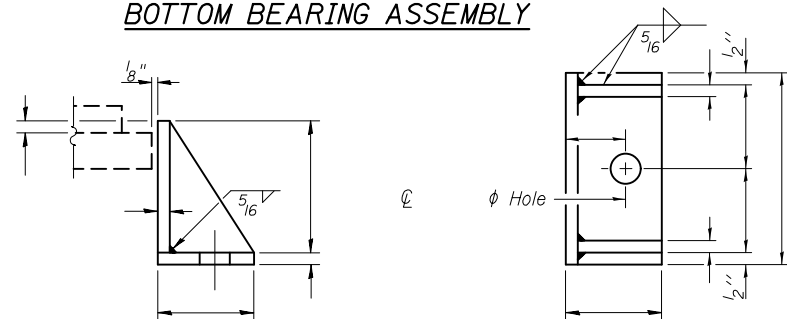
Anchor bolts and side retainers at all supports shall be installed as each member is erected unless an equivalent temporary means of lateral restraint is used.



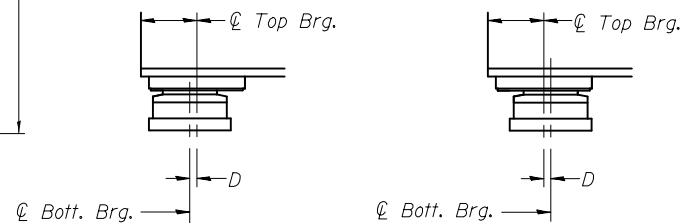
**BOTTOM BEARING ASSEMBLY**



**SECTION THRU PTFE**



**SIDE RETAINER**  
Equivalent rolled angle with stiffeners will be allowed in lieu of welded plates.



**BELOW 50°F.**      **ABOVE 50°F.**

D = 1/8" per each 100' of expansion for every 15° temp. change from the normal temp. of 50°F.

**EXPANSION BEARING ORIENTATION**

The above diagrams are for informational purposes only to show the amount of expected offset "D" for the current temperature in the field.

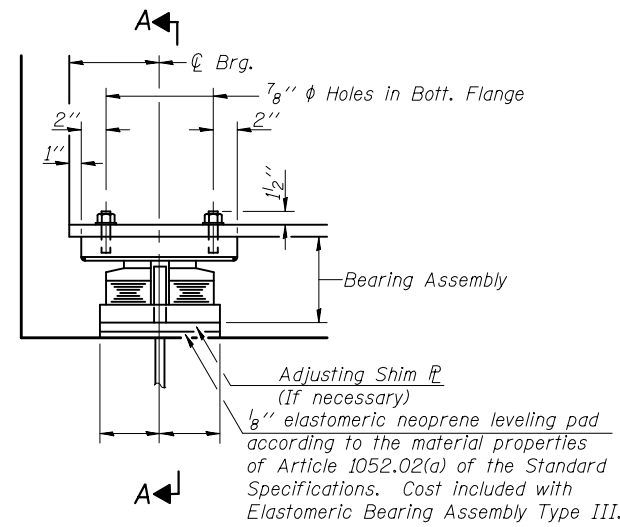
**BILL OF MATERIAL**

Item	Unit	Total
Elastomeric Bearing Assembly Type II	Each	
Anchor Bolts	Each	

I-2E-2

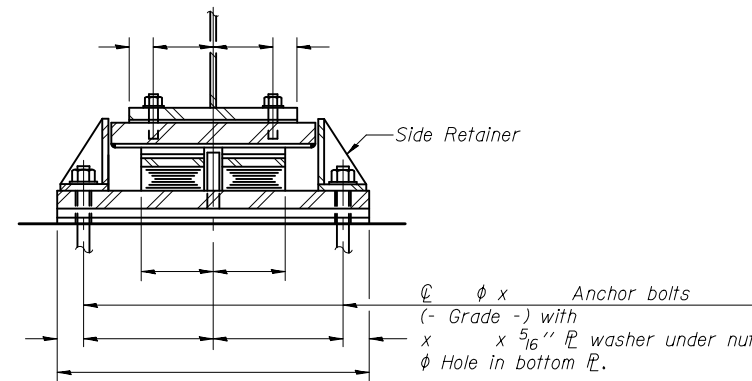
11-22-2016

FILE NAME =	USER NAME =	DESIGNED -	REVISIONS -	<b>STATE OF ILLINOIS DEPARTMENT OF TRANSPORTATION</b>	<b>BEARING DETAILS STRUCTURE NO.</b>	F.A. RTE.	SECTION	COUNTY	TOTAL SHEETS	SHEET NO.	
		CHECKED -	REVISIONS -			CONTRACT NO.					
		DRAWN -	REVISIONS -			ILLINOIS FED. AID PROJECT					
		CHECKED -	REVISIONS -								

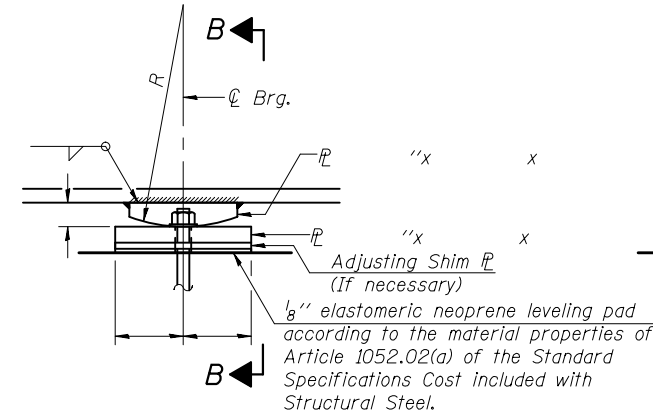


ELEVATION AT ABUT.

TYPE III ELASTOMERIC EXP. BRG.

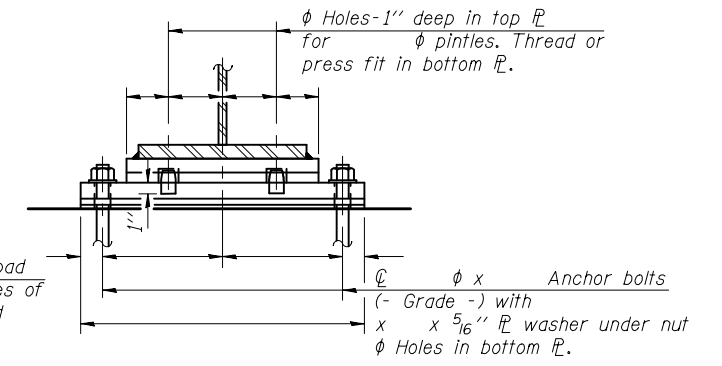


SECTION A-A

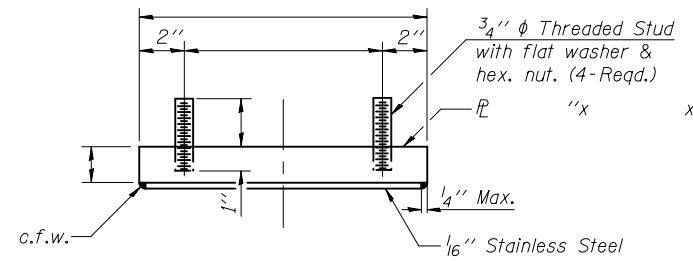


ELEVATION AT PIER

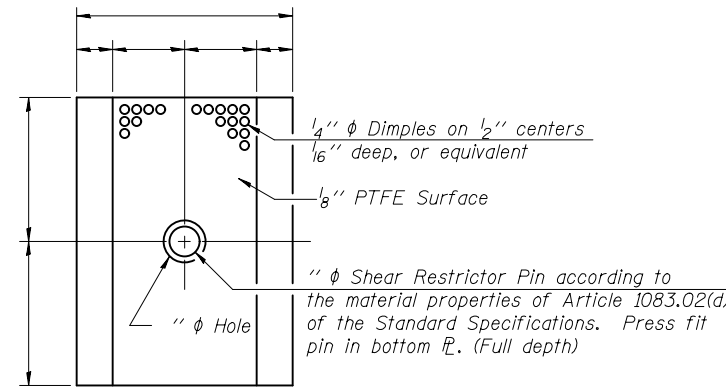
FIXED BEARING



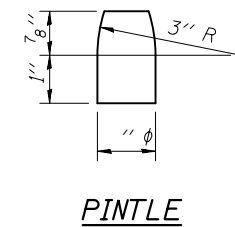
SECTION B-B



TOP BEARING ASSEMBLY

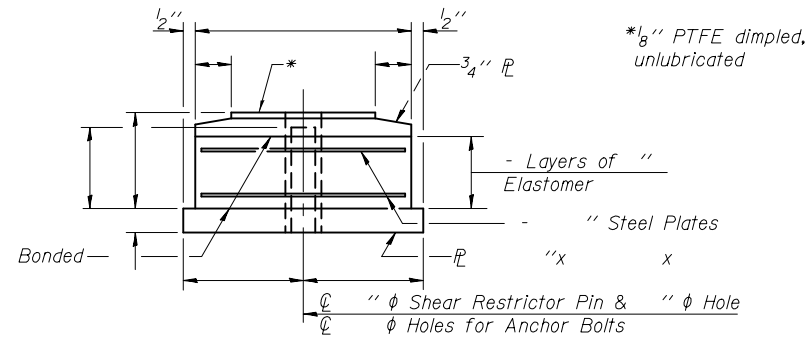


PLAN-PTFE ELASTOMERIC BRG.

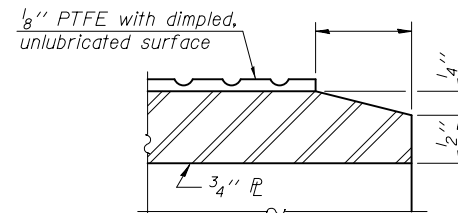


PINTLE

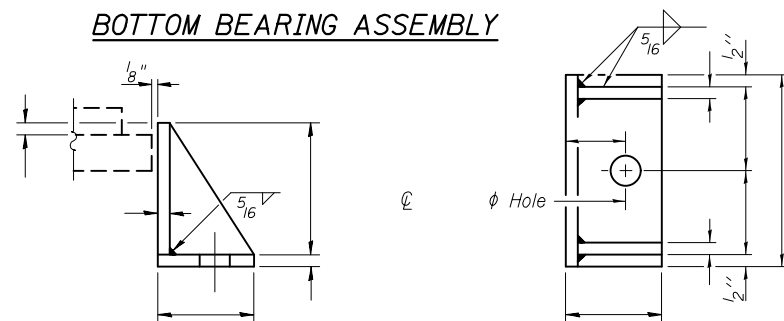
Notes:  
 Anchor bolts shall be ASTM F1554 all-thread (or an Engineer-approved alternate material) of the grade(s) and diameter(s) specified. The corresponding specified grade of AASHTO M314 anchor bolts may be used in lieu of ASTM F1554.  
 Side retainers and other steel members required for the elastomeric bearing assembly shall be included in the cost of Elastomeric Bearing Assembly, Type III.  
 The 1/8" PTFE sheet shall be bonded directly to the top steel plate with a two-component, medium viscosity epoxy resin, conforming to the requirements of the Federal Specification MMM-A-134, Type I. The bond agent shall be applied on the full area of the contact surfaces.  
 Bonding of 1/8" PTFE sheet during vulcanizing process will be permitted provided the process and method of adjusting assembly height is approved by the Engineer.  
 Beams shall be braced for stability during erection and remain braced until deck is poured and cured.  
 Anchor bolts and side retainers at all supports shall be installed as each member is erected unless an equivalent temporary means of lateral restraint is used.



BOTTOM BEARING ASSEMBLY

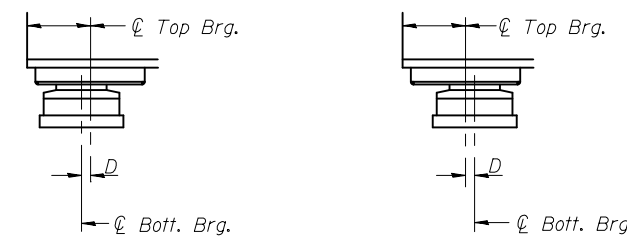


SECTION THRU PTFE



SIDE RETAINER

Equivalent rolled angle with stiffeners will be allowed in lieu of welded plates.



BELOW 50° F.  
 ABOVE 50° F.  
 $D = 1/8$ " per each 100' of expansion for every 15° temp. change from the normal temp. of 50° F.

EXPANSION BEARING ORIENTATION

The above diagrams are for informational purposes only to show the amount of expected offset "D" for the current temperature in the field.

BILL OF MATERIAL

Item	Unit	Total
Elastomeric Bearing Assembly Type III	Each	
Anchor Bolts	Each	

I-2E-3

11-22-2016

FILE NAME =	USER NAME =	DESIGNED -	REVISIONS -	STATE OF ILLINOIS DEPARTMENT OF TRANSPORTATION	BEARING DETAILS STRUCTURE NO.	F.A. RTE.	SECTION	COUNTY	TOTAL SHEETS	SHEET NO.	
		CHECKED -	REVISIONS -			CONTRACT NO.					
		DRAWN -	REVISIONS -			ILLINOIS FED. AID PROJECT					
		CHECKED -	REVISIONS -								