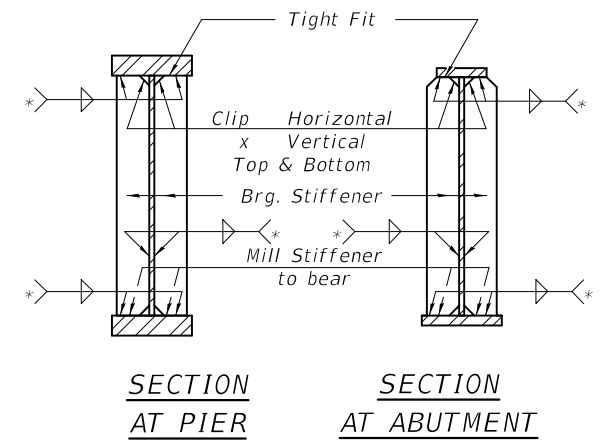
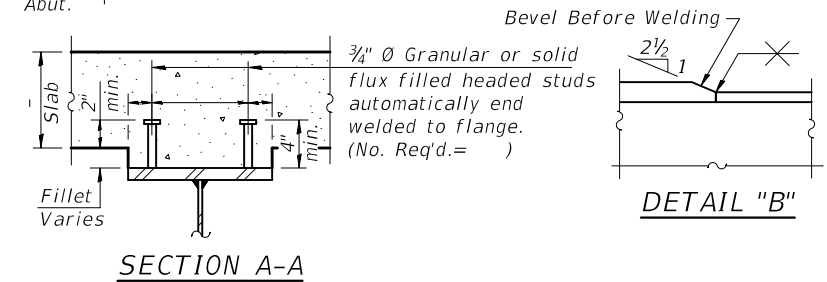
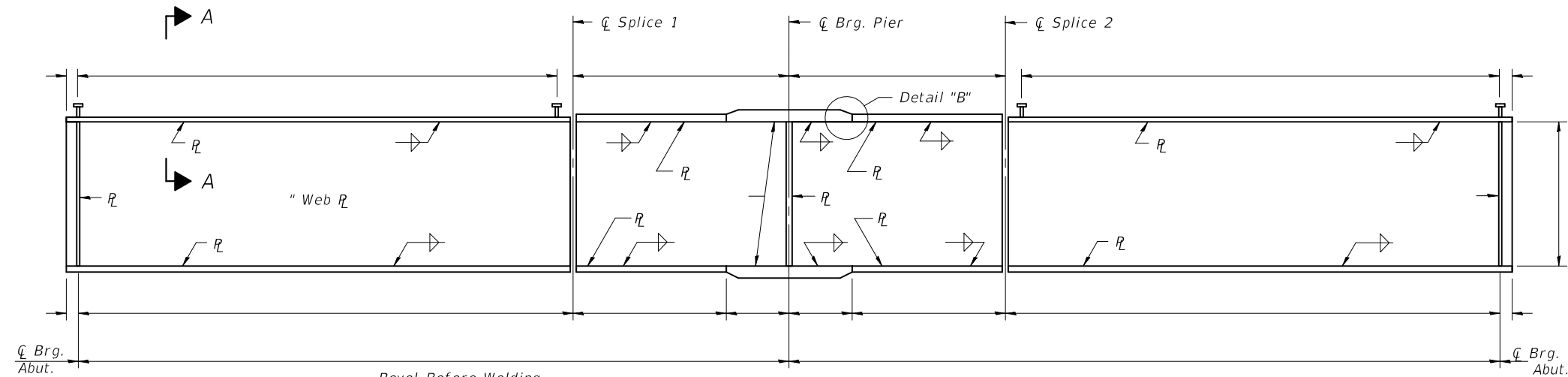


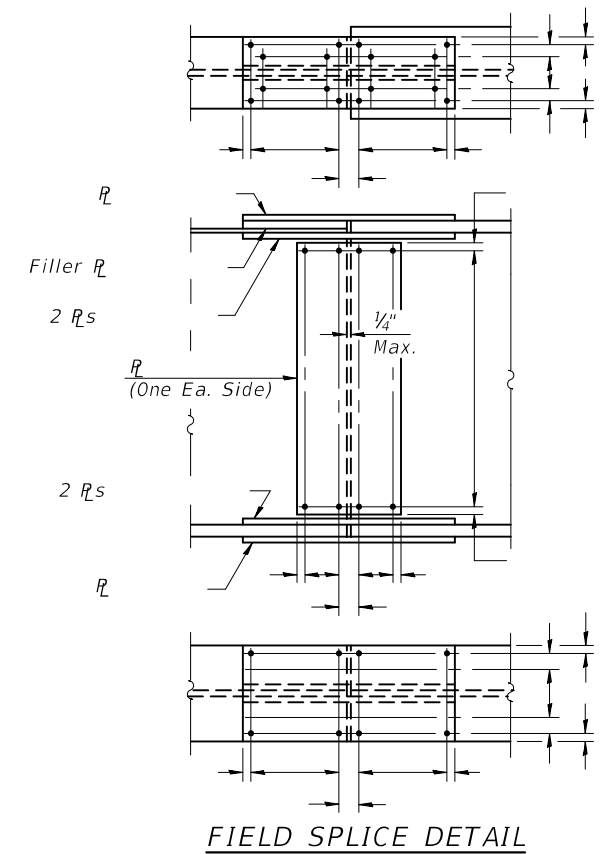
CELL / MODEL NAME	DESCRIPTION	DATE
G-1	Plate girder details	2/17/2017



\* Terminate 1/4" (±1/8") from the end of plate intersects.



**GIRDER ELEVATION**  
 "CVN" denotes Charpy-V-Notch impact energy requirements, zone 2.



G-1 2-17-2017

FILE NAME =	USER NAME =	DESIGNED -	REVISED -	<b>STATE OF ILLINOIS DEPARTMENT OF TRANSPORTATION</b>	<b>STRUCTURAL STEEL STRUCTURE NO.</b>	F.A. RTE.	SECTION	COUNTY	TOTAL SHEETS	SHEET NO.	
	PLOT SCALE =	CHECKED -	REVISED -			CONTRACT NO.					
	PLOT DATE =	DRAWN -	REVISED -			ILLINOIS FED. AID PROJECT					
		CHECKED -	REVISED -								