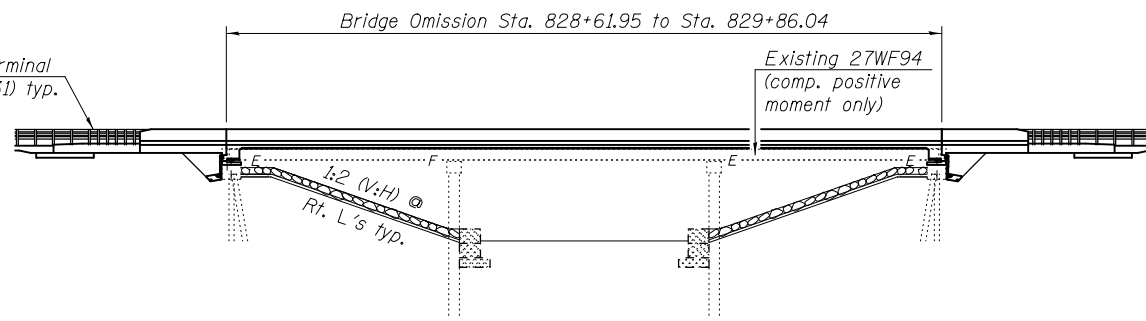


Bench Mark: Chiseled "□" on NE wingwall of S.N. 094-0002. Elev. 626.24.

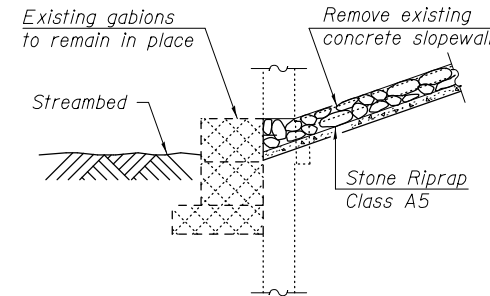
Existing Structure: S.N. 094-0002 built in 1954 as S.B.I. Route 3, Section 28-BR at Station 829+24.00. Structure consists of 3 span reinforced concrete deck on steel WF beams supported on spill-thru pile bent abutments and open concrete pile bent piers. 125'-9" back-to-back abutments. 34'-4" out-to-out deck. Concrete deck to be removed and replaced using Stage Construction.

No salvage

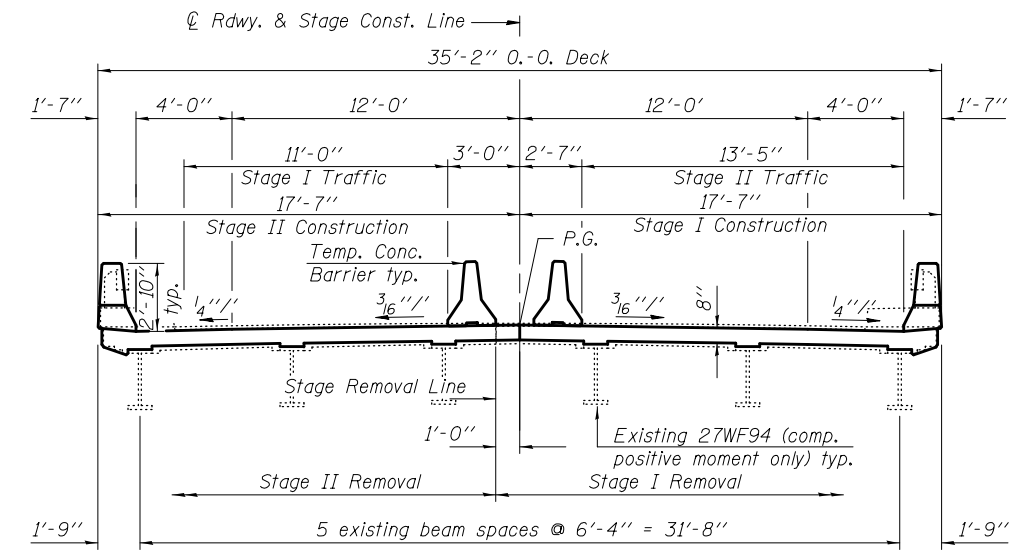
Traffic Barrier Terminal Type 6 (Std. 631031) typ.



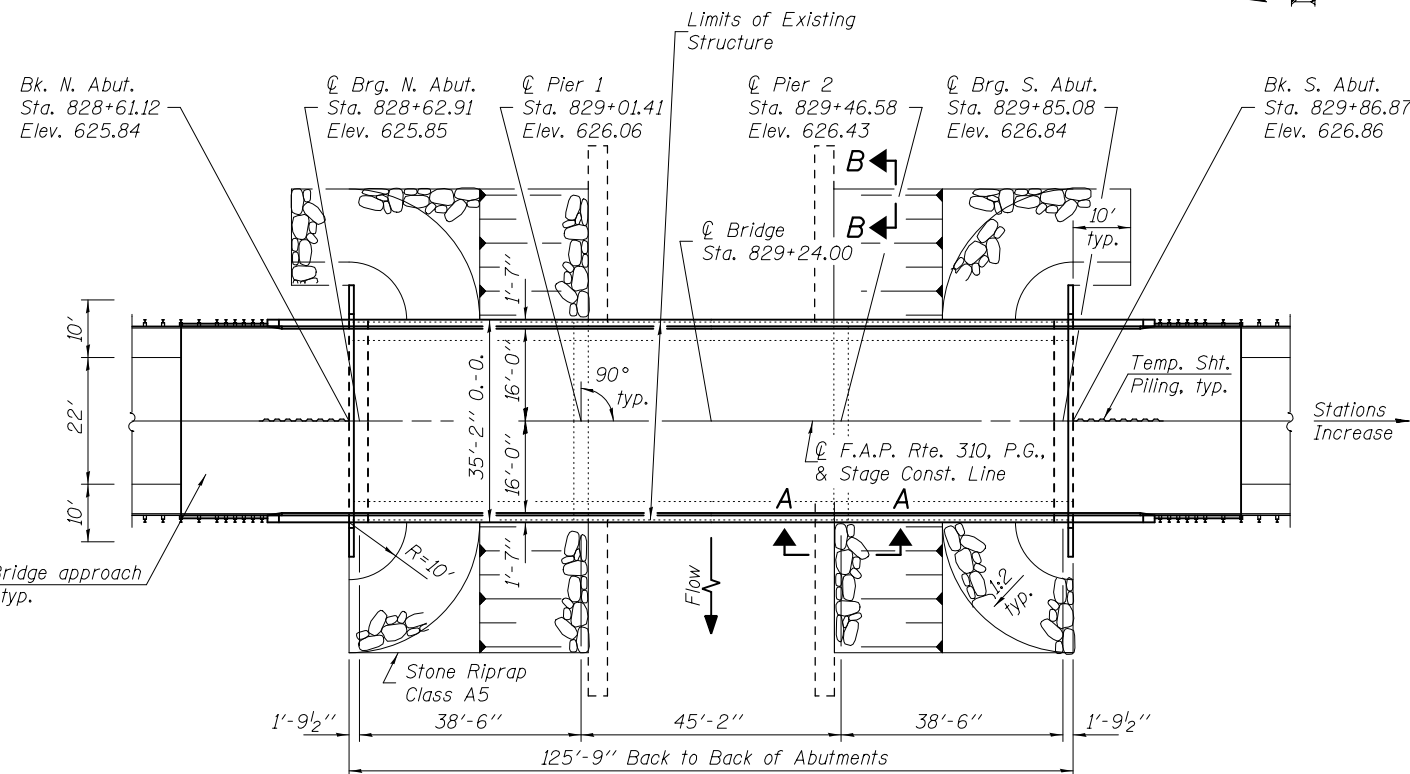
ELEVATION



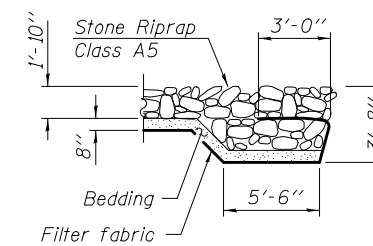
SECTION A-A



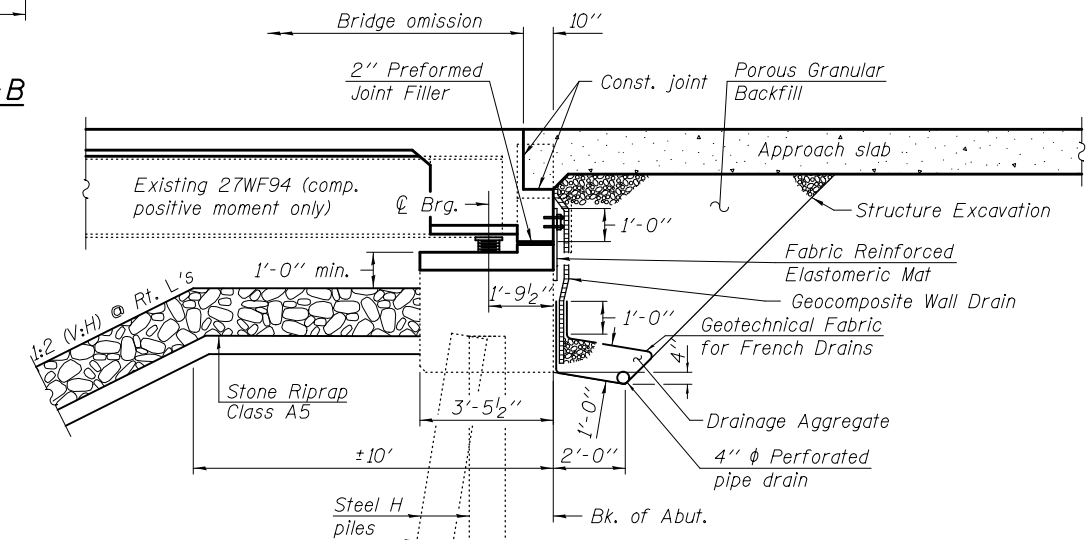
CROSS SECTION
(Looking South)



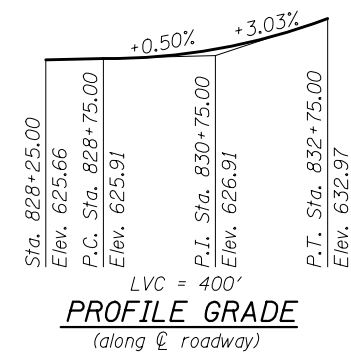
PLAN



SECTION B-B



SECTION THRU SEMI-INTEGRAL ABUTMENT
(Horiz. Dimensions @ Rt. L's)



SCOPE OF WORK

1. Remove and replace existing concrete deck.
2. Make new deck composite in positive moment regions.
3. Reconfigure existing abutments and wingwalls to semi-integral configuration.
4. Clean, paint and reuse fixed and expansion bearings at the piers.
5. Repair steel beams and diaphragms as necessary.
6. Remove existing concrete slope wall and replace with riprap.
7. Clean and paint existing structural steel under separate "Paint Only" contract.

HIGHWAY CLASSIFICATION

F.A.P. Rte. 310 - U.S. Rte. 67
Functional Class: Principal Arterial
ADT: 1950 (2001); 2914 (2021)
DHV: 244 ADTT: 17.9%
Design Speed: 55 m.p.h.
Posted Speed: 55 m.p.h.

LOADING HS20-44 (New Const.)

Allow 50#/sq. ft. for future wearing surface.

DESIGN SPECIFICATIONS (New Const.)

2002 AASHTO

DESIGN STRESSES

FIELD UNITS (New Construction)

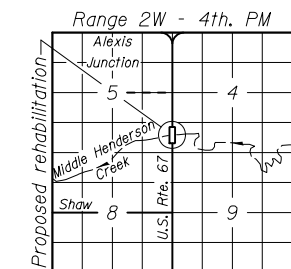
$f'_c = 3,500$ psi
 $f_y = 60,000$ psi (reinforcement)

FIELD UNITS (Exist. Construction)

$f'_c = 3,500$ psi
 $f_y = 40,000$ psi (reinforcement)
 $f_y = 33,000$ psi (structural steel)

SEISMIC DATA

Seismic Performance Category (SPC) = A
Horizontal Bedrock Acceleration Coefficient (A) = 0.036g
Site Coefficient (S) = 1.2



LOCATION SKETCH

GENERAL PLAN & ELEVATION
U.S. ROUTE 67 OVER
MIDDLE HENDERSON CREEK
F.A.P. RTE. 310 - SEC. 28BR-1
WARREN COUNTY
STATION 829+24.00
STRUCTURE NO. 094-0002

FILE NAME =	USER NAME =	DESIGNED -	REVISOR -	STATE OF ILLINOIS DEPARTMENT OF TRANSPORTATION	SHEET NO. 1 OF 1 SHEETS	F.A.P. RTE. 310	SECTION 28BR-1	COUNTY WARREN	TOTAL SHEETS	SHEET NO.
	PLOT SCALE =	CHECKED -	REVISOR -			CONTRACT NO. 88798				
	PLOT DATE =	DRAWN -	REVISOR -			ILLINOIS FED. AID PROJECT				
		CHECKED -	REVISOR -			D-94-088-96				