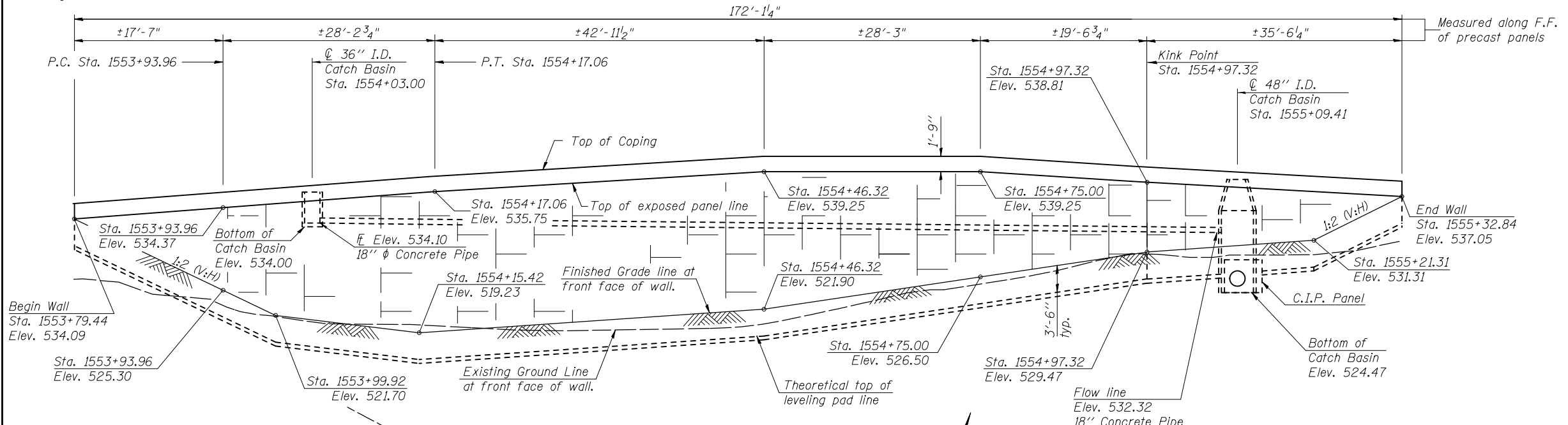


Bench Mark:
 BM #51 - Chiseled "□" on N.E. corner of combination mast arm foundation at the S.E. corner of Kramer Ave.
 and Wilcox Rd. Sta. 1553+29.04, 45.217' Rt., Elev. 520.83.

Existing Structure: None.



DESIGN STRESSES

FIELD UNITS
 $f'_c = 3,500$ psi
 $f_y = 60,000$ psi (Reinforcement)

PRECAST UNITS
 $f'_c = 4,500$ psi (Precast Panels)

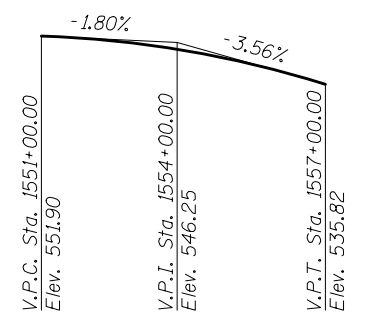
DESIGN SPECIFICATIONS
 2002 AASHTO

CURVE DATA

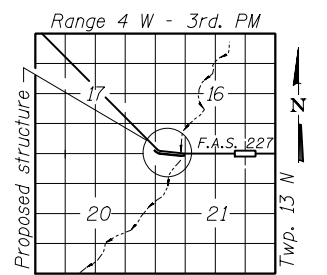
(F.A.S. Rte. 227)
 P.I. Sta. = 1553+95.75
 $\Delta = 39^\circ-20'-54''$
 $D = 22^\circ-55'-6''$
 $R = 250.00'$
 $T = 89.39'$
 $L = 171.69'$
 $E = 15.50'$
 P.C. Sta. = 1553+06.36
 P.T. Sta. = 1554+78.05
 $e = 3.9\%$
 $T.R. = 26.00'$
 S.E. Runoff = 67.00'
 S.E. Attained from Sta. 1552+35.69 to 1553+28.69
 S.E. Removed from Sta. 1554+55.72 to 1555+48.72

HIGHWAY CLASSIFICATION

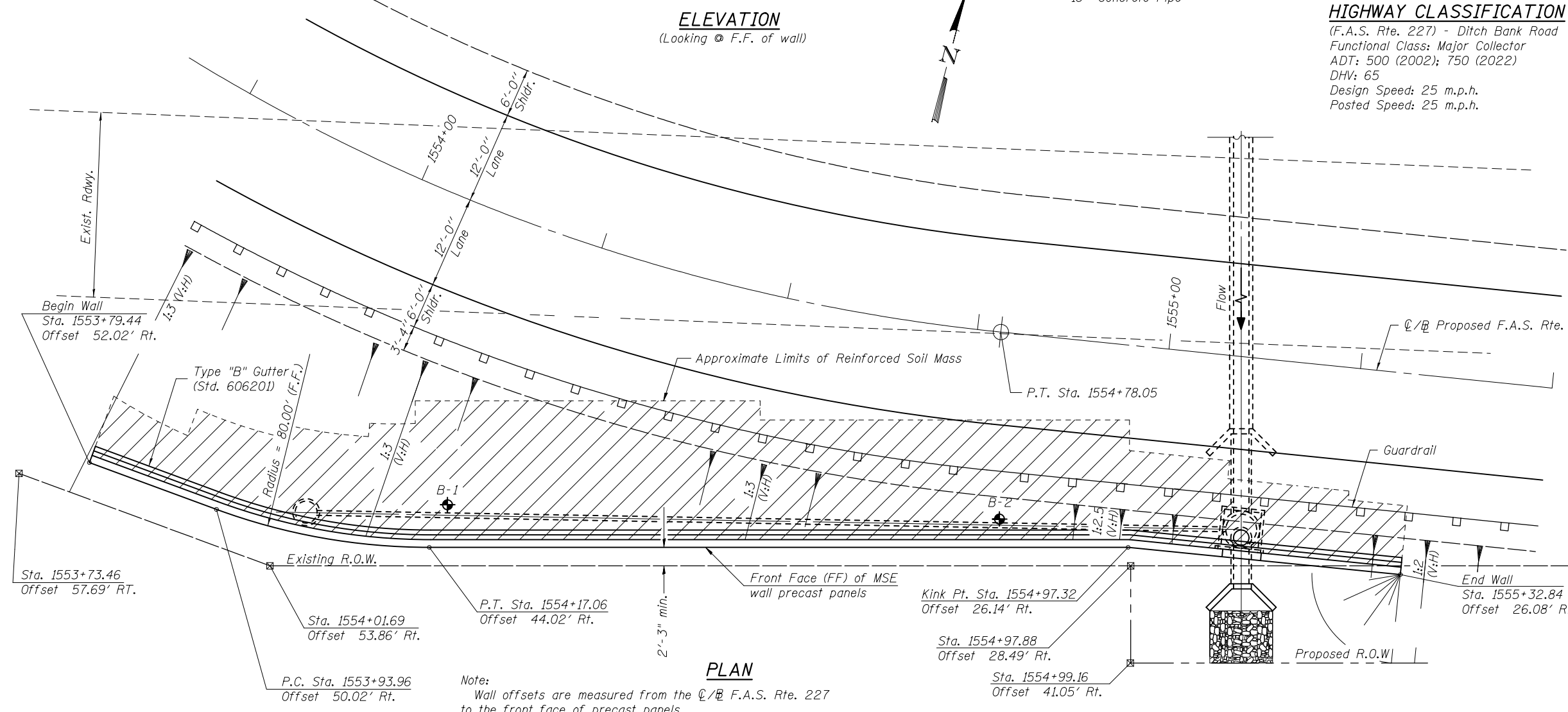
(F.A.S. Rte. 227) - Ditch Bank Road
 Functional Class: Major Collector
 ADT: 500 (2002); 750 (2022)
 DHV: 65
 Design Speed: 25 m.p.h.
 Posted Speed: 25 m.p.h.



PROFILE GRADE
 (along @ Roadway)

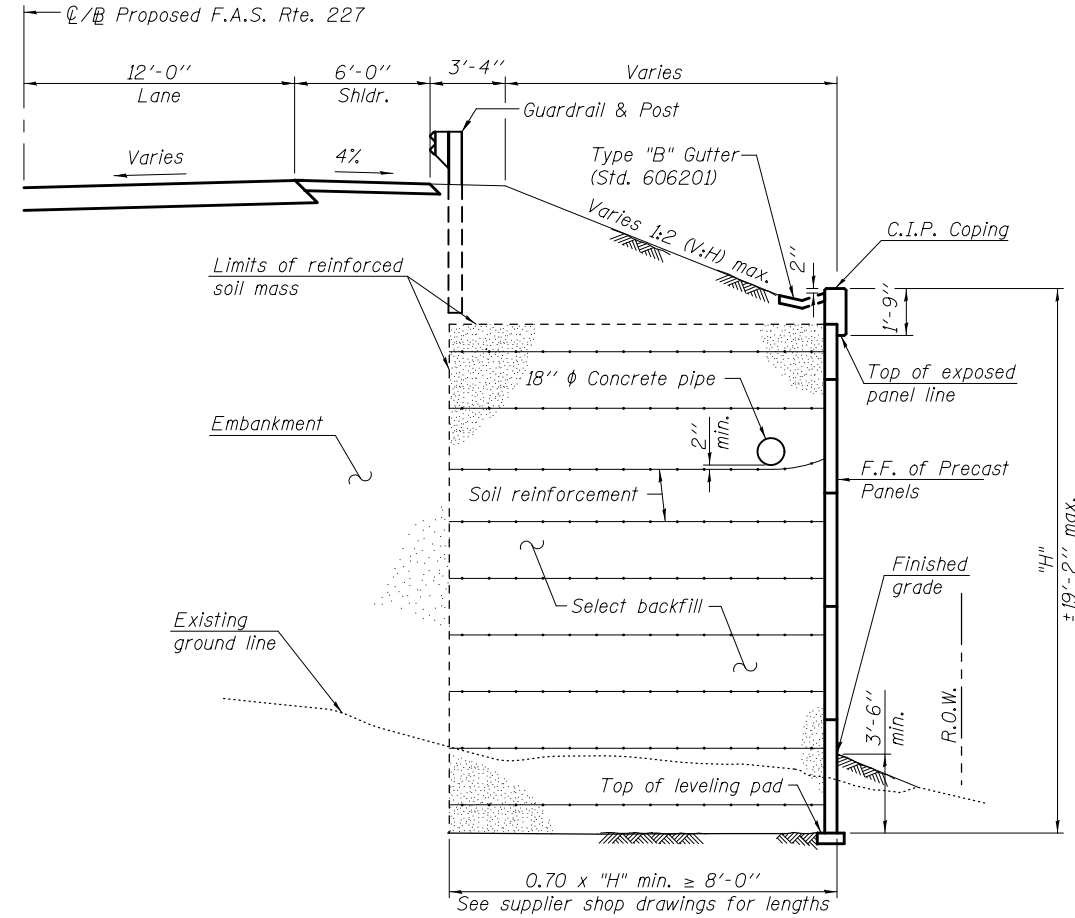


LOCATION SKETCH



GENERAL PLAN & ELEVATION
DITCH BANK ROAD
F.A.S. RTE. 227 - SEC. 116-RS-W
SANGAMON COUNTY
STATION 1553+79.44 TO 1555+32.84
STRUCTURE NO. 084-WXXX

FILE NAME =	USER NAME =	DESIGNED -	REVISD -	STATE OF ILLINOIS DEPARTMENT OF TRANSPORTATION	F.A.S. RTE. 227	SECTION 116-RS-W	COUNTY SANGAMON	TOTAL SHEETS	SHEET NO.
		CHECKED -	REVISD -		SHEET NO. 1 OF 2 SHEETS		CONTRACT NO. 12345		
		DRAWN -	REVISD -		ILLINOIS FED. AID PROJECT				
		CHECKED -	REVISD -						



TYPICAL WALL SECTION
(Looking East)

DETAILS
DITCH BANK ROAD
F.A.S. RTE. 227 - SEC. 116-RS-W
SANGAMON COUNTY
STATION 1553+79.44 TO 1555+32.84
STRUCTURE NO. 084-WXXX

FILE NAME =	USER NAME =	DESIGNED -	REVISED -	STATE OF ILLINOIS DEPARTMENT OF TRANSPORTATION	SHEET NO. 2 OF 2 SHEETS	ILLINOIS FED. AID PROJECT
		CHECKED -	REVISED -			
		DRAWN -	REVISED -			
		CHECKED -	REVISED -			

F.A.S. RTE.	SECTION	COUNTY	TOTAL SHEETS	SHEET NO.
227	116-RS-W	SANGAMON	CONTRACT NO. 12345	