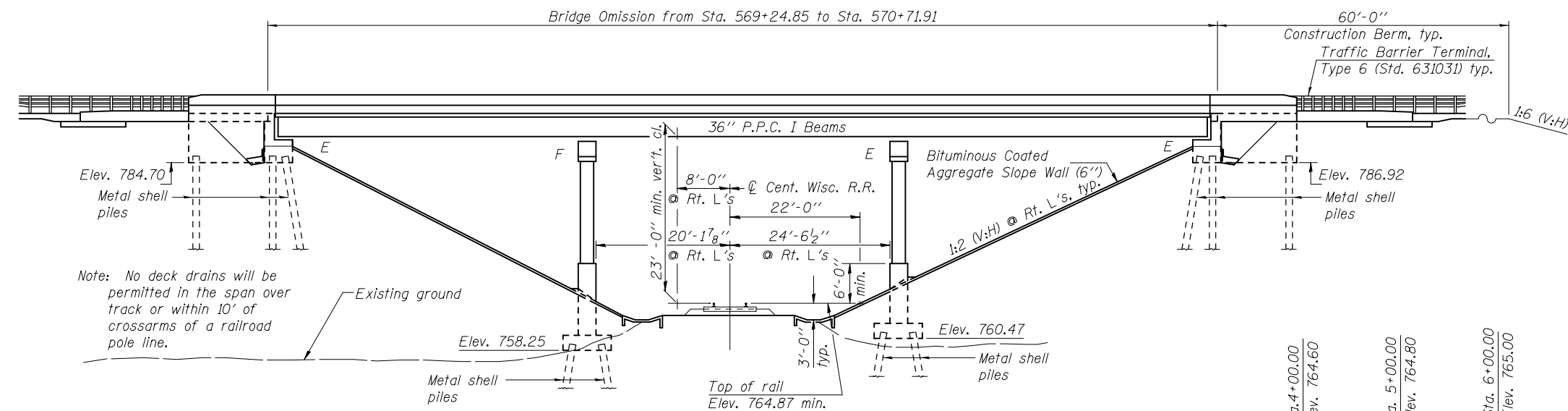
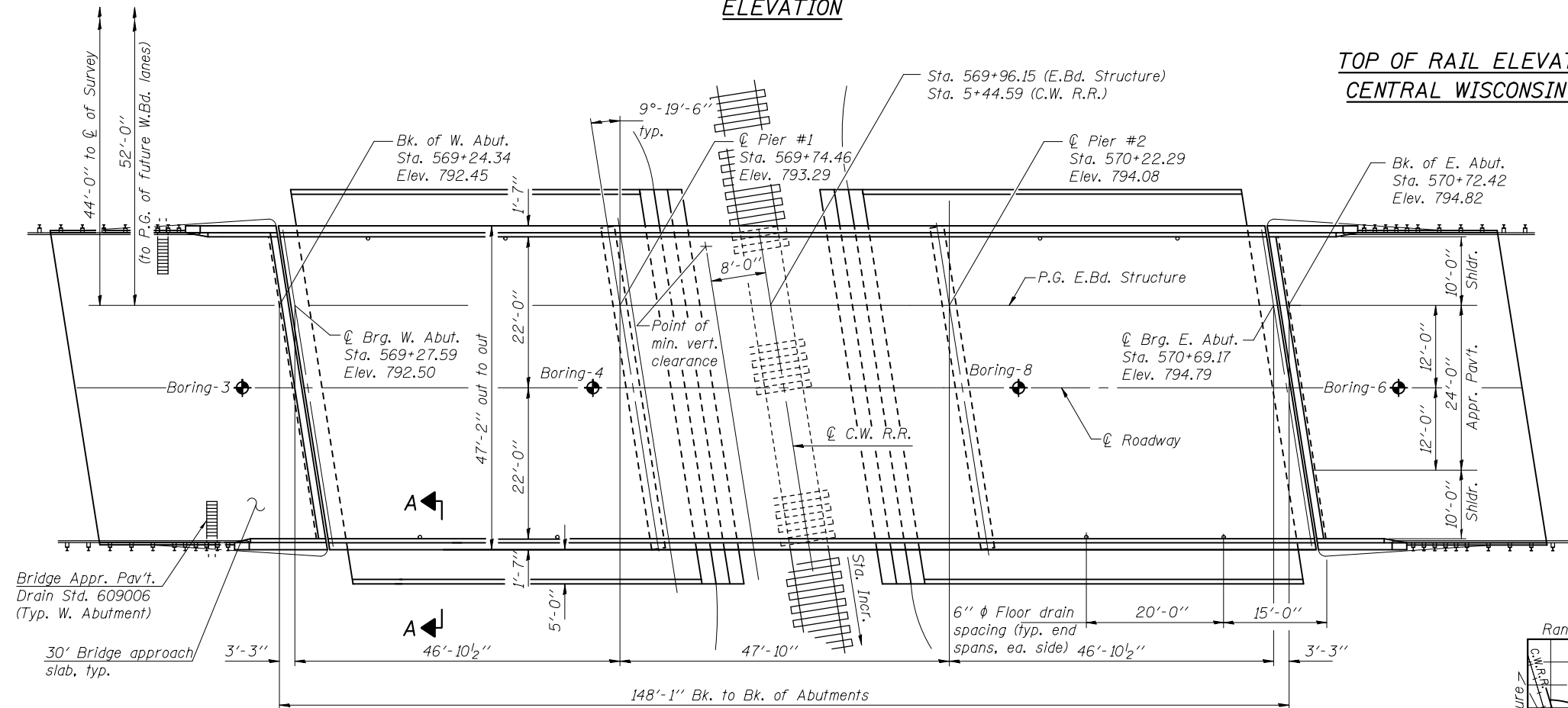


Bench Mark: 105A - 60d spike in corner on south side of side road at west end of Fairview Road 75'± east of C.W. R.R. tracks. Elevation 770.98.  
Existing Structure: None

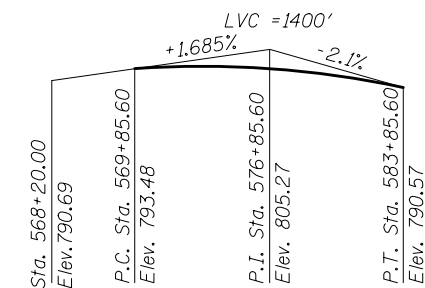
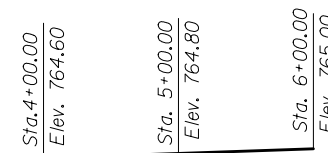


**ELEVATION**

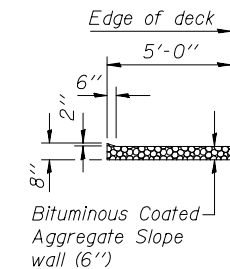


**PLAN**

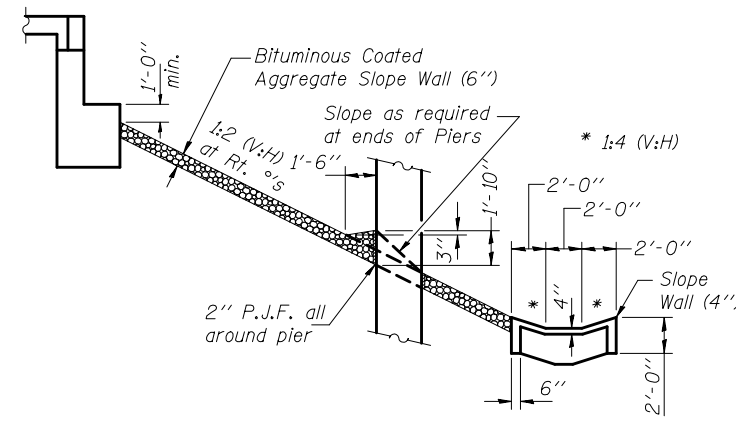
**TOP OF RAIL ELEVATIONS  
CENTRAL WISCONSIN R.R.**



**PROFILE GRADE**



**SECTION A-A**



**SECTION THRU SLOPEWALL**

**HIGHWAY CLASSIFICATION**  
F.A. Rte. 401 - U.S. Rte. 20  
Functional Class: Other principal arterial  
ADT: 8,000 (2005) 10,000 (2025)  
ADTT: 1,440 (2005) 1,800 (2025)  
DHW: 1130 (2005)  
Speed: 65 m.p.h. (posted); 70 m.p.h. (design)  
Two-way traffic Directional Dist. 50:50

**DESIGN SPECIFICATIONS**  
2010 AASHTO LRFD Bridge Design Specifications

**LOADING HL 93**

Allow 50#/sq. ft. for future wearing surface.

**DESIGN STRESSES**

**FIELD UNITS**

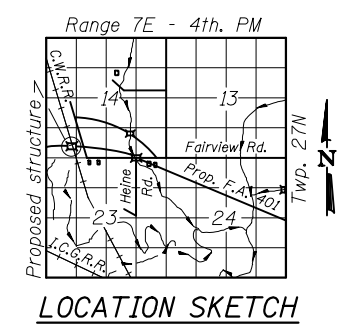
$f_c = 3,500$  psi  
 $f_y = 60,000$  psi (Reinf.)

**PRECAST PRESTRESSED UNITS**

$f'_c = 6,000$  psi  
 $f'_{ci} = 5,000$  psi  
 $f_{pu} = 270,000$  psi (1/2" φ low lax. strands)  
 $f_{pb} = 201,960$  psi (1/2" φ low lax. strands)

**SEISMIC DATA**

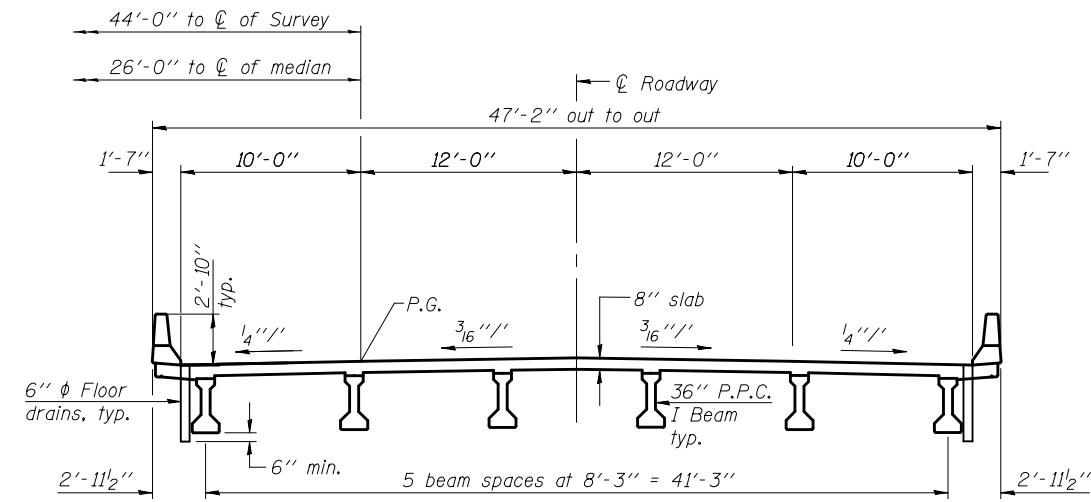
Seismic Performance Zone (SPZ) = 1  
Design Spectral Acceleration at 1.0 sec. ( $S_{D1}$ ) = 0.032g  
Design Spectral Acceleration at 0.2 sec. ( $S_{D5}$ ) = 0.070g  
Soil Site Class = B



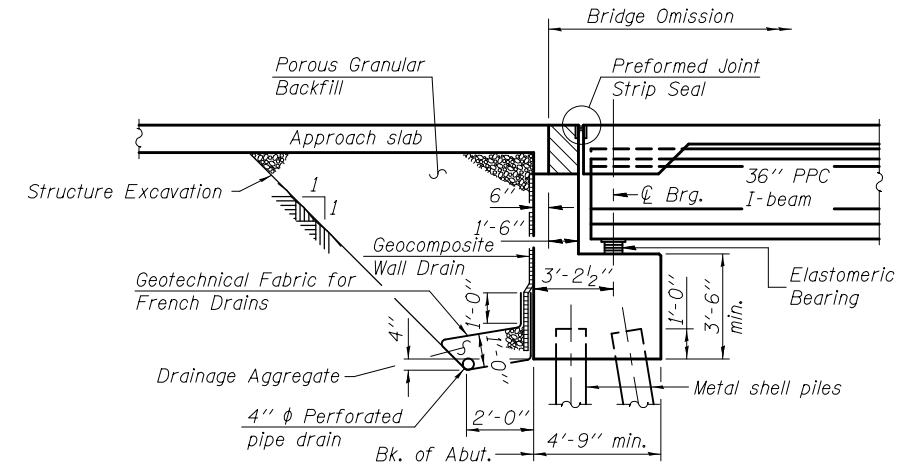
**LOCATION SKETCH**

**GENERAL PLAN & ELEVATION  
U.S. ROUTE 20 OVER  
CENTRAL WISCONSIN RAILROAD  
F.A. RTE. 401 - SEC. 177-2VB  
STEPHENSON COUNTY  
STATION 569+96.15  
STRUCTURE NO. 089-0055**

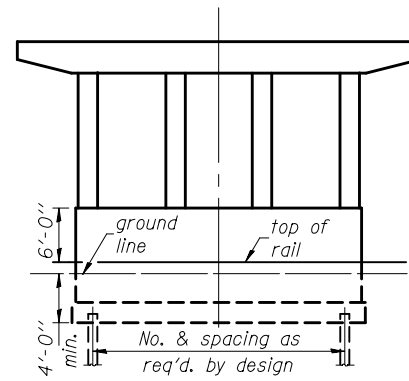
FILE NAME =	USER NAME =	DESIGNED -	REVISD -	<b>STATE OF ILLINOIS DEPARTMENT OF TRANSPORTATION</b>	SHEET NO. 1 OF 2 SHEETS	F.A. RTE.	SECTION	COUNTY	TOTAL SHEETS	SHEET NO.	
		CHECKED -	REVISD -			401	177-2VB	STEPHENSON			
		PLOT SCALE =	REVISD -			CONTRACT NO. 12345					
		PLOT DATE =	REVISD -			ILLINOIS FED. AID PROJECT					



**CROSS SECTION**  
(Looking East)



**SECTION THRU ABUTMENTS**  
(Horiz. dim. @ Rt. L's)



**PIER SKETCH**

**DETAILS**  
**U.S. ROUTE 20 OVER**  
**CENTRAL WISCONSIN RAILROAD**  
**F.A. RTE. 401 - SEC. 177-2VB**  
**STEPHENSON COUNTY**  
**STATION 569+96.15**  
**STRUCTURE NO. 089-0055**

FILE NAME =	USER NAME =	DESIGNED -	REVISED -
		CHECKED -	REVISED -
	PLOT SCALE =	DRAWN -	REVISED -
	PLOT DATE =	CHECKED -	REVISED -

**STATE OF ILLINOIS**  
**DEPARTMENT OF TRANSPORTATION**

SHEET NO. 2 OF 2 SHEETS

F.A. RTE.	SECTION	COUNTY	TOTAL SHEETS	SHEET NO.
401	177-2VB	STEPHENSON		
				CONTRACT NO. 12345
ILLINOIS FED. AID PROJECT				