



A. Purpose

Setup the Illinois DOT CONNECTED CADD Environment on:

- Integrated with Bentley's installed environment
- Local PC
- Server

B. Owner

Bureau of Design and Environment \ Surveys, Mapping and Modeling \ CADD Modeling & GIS Support

C. Audience

IDOT CONNECTED CADD Environment users

D. Required Items

- Current IDOT CONNECTED CADD Environment downloaded from:
 - <http://www.idot.illinois.gov/doing-business/procurements/engineering-architectural-professional-services/Consultants-Resources/index#CADD>

E. Pre-Requisites

- Admin access to C:\ProgramData\Bentley*CONNECTED Software folder* \Configuration
- Ability to copy files to the root of the C:\ drive
- Extract the contents of the downloaded "IDOTCAD_CONNECTED.exe" file to a location on your local PC.

F. Specific Instructions/Requirements

Integrate with Installed Bentley Environment

*User preferences are stored at the default location as specified in your Software. For OpenRoads Designer this location is C:\Users\UserName\AppData\Local\Bentley\OpenRoadsDesigner\10.0.0

**To date we are unable to get this setup process to work with PowerDraft, we can only get it to work with ORD.

1. From the "IDOTCAD_ORD\Configuration\Organization-Civil" folder COPY the "IDOTCAD_ORD_Standards" folder and "IDOTCAD_ORD_Standards.cfg" file (Figure F.1.a) to the "C:\ProgramData\Bentley\OpenRoads Designer CE\Organization-Civil" folder. (Figure F.1.b)
2. From the "IDOTCAD_ORD\Configuration\Workspaces" folder COPY the "Consultant" folder and "Consultant.cfg" file (Figure F.2.a) to the "C:\ProgramData\Bentley\ OpenRoads Designer CE \Configuration\WorkSpaces" folder. (Figure F.2.b)

Setup on Local Hard Drive OR Server

*User preferences are MOVED to a general location for all users on the LOCAL PC,

C:\pw_work\ _Bentley_ORD_Prefs\UserName\. This is controlled in the WorkspaceSetup.cfg file located in the IDOTCAD_ORD\Configuration folder on line 39

**We are able to get this setup process to work with PowerDraft and ORD.

3. Move the extracted IDOTCAD_ORD folder to the root of your C:\ drive, or any other location you want. (Figure F.3)
4. Move to a different folder **or** delete all the contents of the "C:\ProgramData\Bentley*CONNECTED Software folder* \Configuration" folder. (Figure F.4)
 - a. You can save these files if you want, but we have included the most current ORD *Training and Examples* environment with our environment.
5. Copy the "ConfigurationSetup.cfg" file from the "IDOTCAD_ORD" folder (Figure F.5.a) to the "C:\ProgramData\Bentley*CONNECTED Software folder* \Configuration" folder. (Figure F.5.b)
6. Open the "ConfigurationSetup.cfg" file located in the "C:\ProgramData\Bentley*CONNECTED Software folder* \Configuration" folder with a text editor.
 - a. **Local Hard Drive:** If you have the IDOTCAD_ORD folder anywhere besides "C:\IDOTCAD_ORD" then you will need to edit line 39 and put the complete path to the Configuration folder in place of "c:/IDOTCAD_ORD/Configuration/". Make sure and use forward slashes and not backslashes. (Figure F.6.a) If you are running a Server setup then you do not need to edit line 39, the software will skip it.

If you have questions regarding setup please contact IDOT CADD and GIS Support at

DOT.CADD.GIS.Support@illinois.gov.



- b. **Server:** If you have the IDOTCAD_ORD folder on a Server then you will need to edit line 41 and put the complete path to the Configuration folder in the place of “w:/IDOTCAD_ORD/Configuration?”. You can use the full UNC path such as “//Server/share/IDOTCAD_ORD/Configuration?” instead of a drive letter as shown. Make sure and use forward slashes and not backslashes (Figure F.6.b)

Opening Your CONNECTED Software with the IDOT CADD Standards

7. Start your CONNECTED Platform software and Select “Consultant” from the WorkSpace drop down. If the WorkSet does not auto populate you will have to select “Consultant” there as well. (Figure F.7)
8. To double check your configuration setup go to About Configuration in Back Stage by selecting “File -> Settings -> Configuration -> About Configuration”. (Figure F.8)
9. In the About Configuration Dialog the WorkSpace description should say “IDOTCAD V10 WorkSpace for Consultants”. (Figure F.9)

G. Post Activities

- None

H. Table of Figures

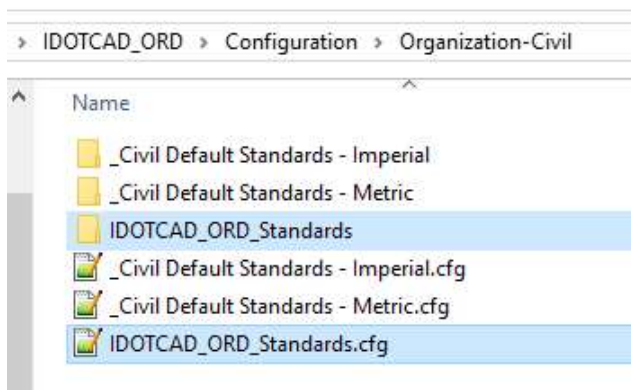


Figure F.1.a

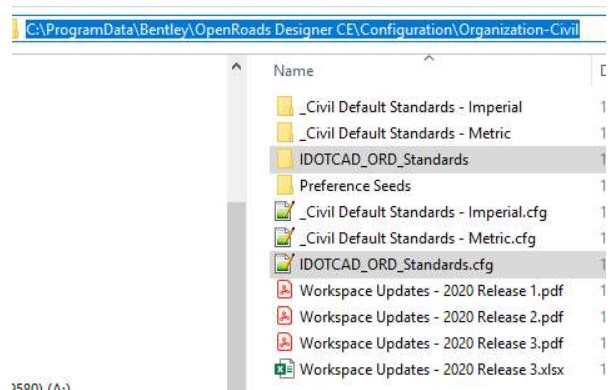


Figure F.1.b

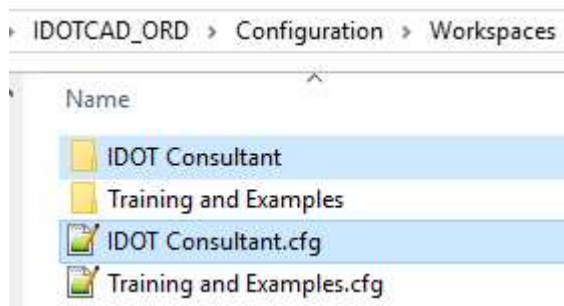


Figure F.2.a

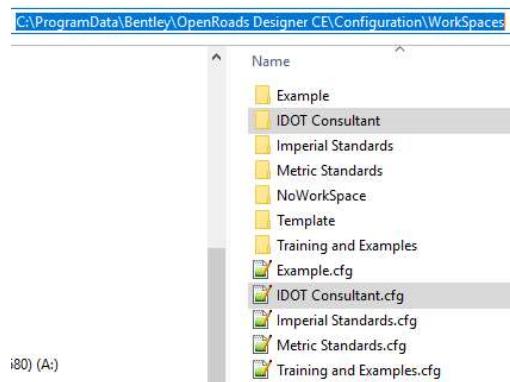


Figure F.2.b

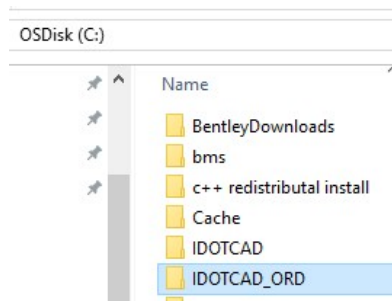


Figure F.3

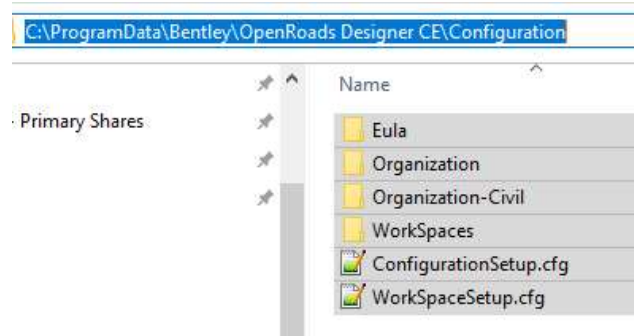


Figure F.4

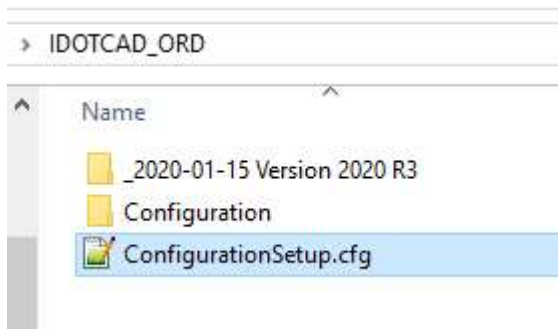


Figure F.5.a

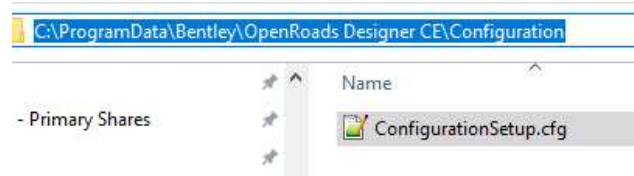


Figure F.5.b

```

32 #_USTN_CONFIGURATION : ${_USTN_CUSTOM_CONFIGURATION}
33 #-----
34 #-----
35 # START: The section defines user selection at the time of installation.
36 # These lines are generated by installer.
37
38 %if exists (c:/IDOTCAD_ORD/Configuration/)
39   _USTN_CUSTOM_CONFIGURATION = c:/IDOTCAD_ORD/Configuration/ #Local Environment Location
40 %else
41   _USTN_CUSTOM_CONFIGURATION = w:/IDOTCAD_ORD/Configuration/ #Server Environment Location
42 %endif
43
44 [SetConfiguration]

```

Figure F.6.a

```

32 #_USTN_CONFIGURATION : ${_USTN_CUSTOM_CONFIGURATION}
33 #-----
34 #-----
35 # START: The section defines user selection at the time of installation.
36 # These lines are generated by installer.
37
38 %if exists (c:/IDOTCAD_ORD/Configuration/)
39   _USTN_CUSTOM_CONFIGURATION = c:/IDOTCAD_ORD/Configuration/ #Local Environment Location
40 %else
41   _USTN_CUSTOM_CONFIGURATION = w:/IDOTCAD_ORD/Configuration/ #Server Environment Location
42 %endif
43
44 [SetConfiguration]

```

Figure F.6.b

If you have questions regarding setup please contact IDOT CADD and GIS Support at DOT.CADD.GIS.Support@illinois.gov.



MicroStation PowerDraft CO

Workspace WorkSet
IDOT Consultant ▾ IDOT Consultant ▾

Recent Files

You haven't opened any files recently. To browse for a

Figure F.7

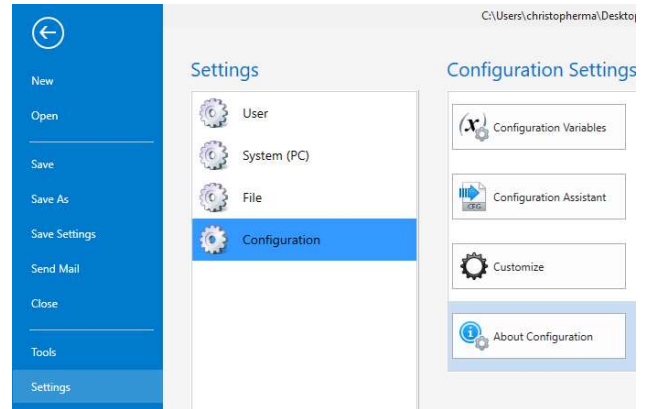


Figure F.8

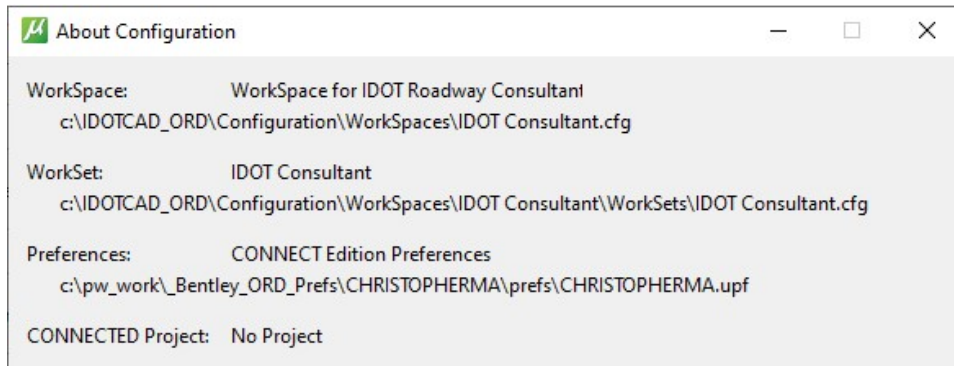


Figure F.9