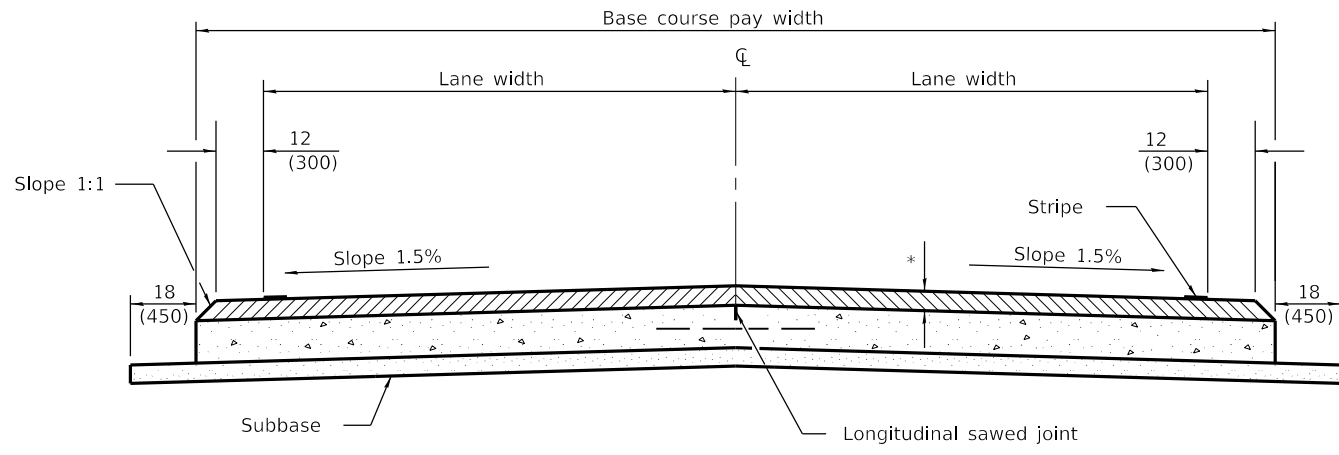
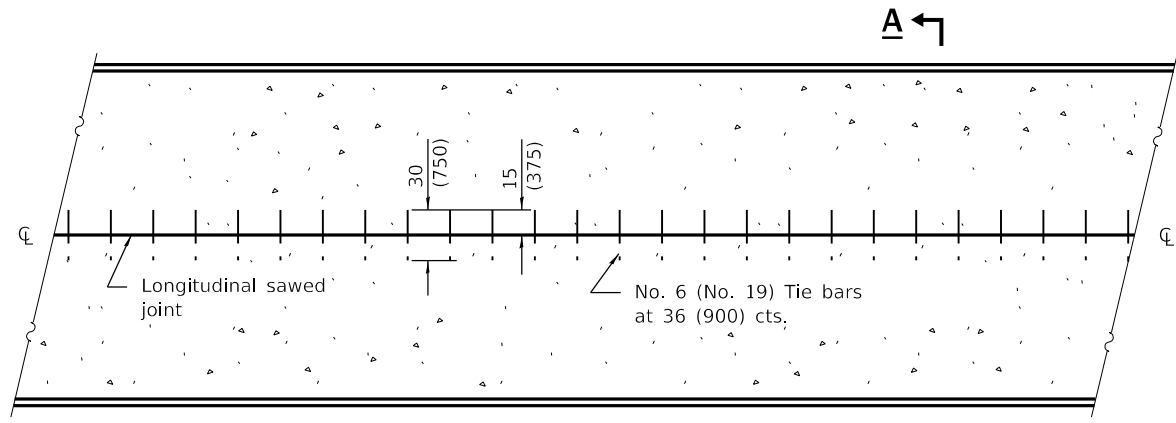


SECTION A-A
(TYPICAL 2 LANE WITH SHOULDERS)

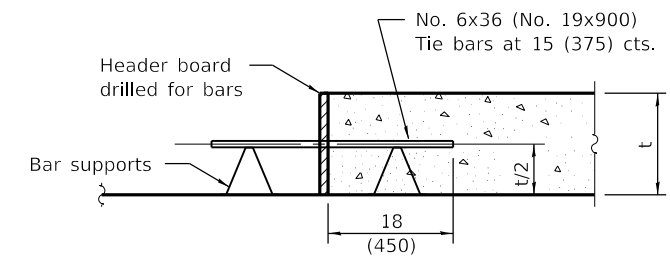
* HMA binder and surface courses



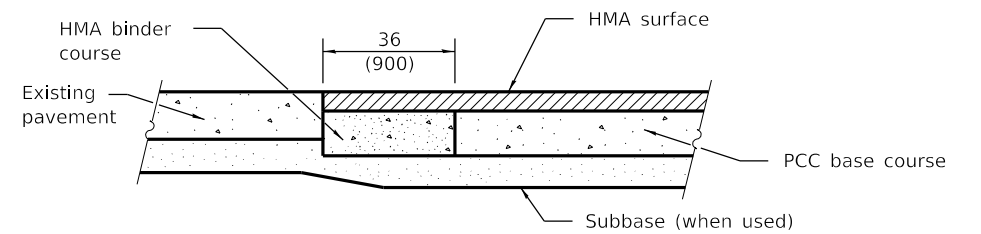
ALTERNATE SECTION A-A
(TYPICAL 2 LANE WITH SHOULDERS)



PLAN



TRANSVERSE CONSTRUCTION JOINT



LONGITUDINAL SECTION SHOWING CONSTRUCTION ADJACENT TO EXISTING PAVEMENT

GENERAL NOTES

The longitudinal sawed joint shall be as detailed on Standard 420001 except the sawed groove does not require sealing.

All dimensions are in inches (millimeters) unless otherwise shown.

DATE	REVISIONS
1-1-18	Changed tie bar spacing to 36 (900) cts.
1-1-08	Switched units to English (metric).

PCC BASE COURSE WITH HMA BINDER AND SURFACE COURSES

STANDARD 353001-05

Illinois Department of Transportation

PASSED January 1, 2018
Michael Beard
 ENGINEER OF POLICY AND PROCEDURES

APPROVED January 1, 2018
Maureen M. Beck
 ENGINEER OF DESIGN AND ENVIRONMENT

ISSUED 1-1-97