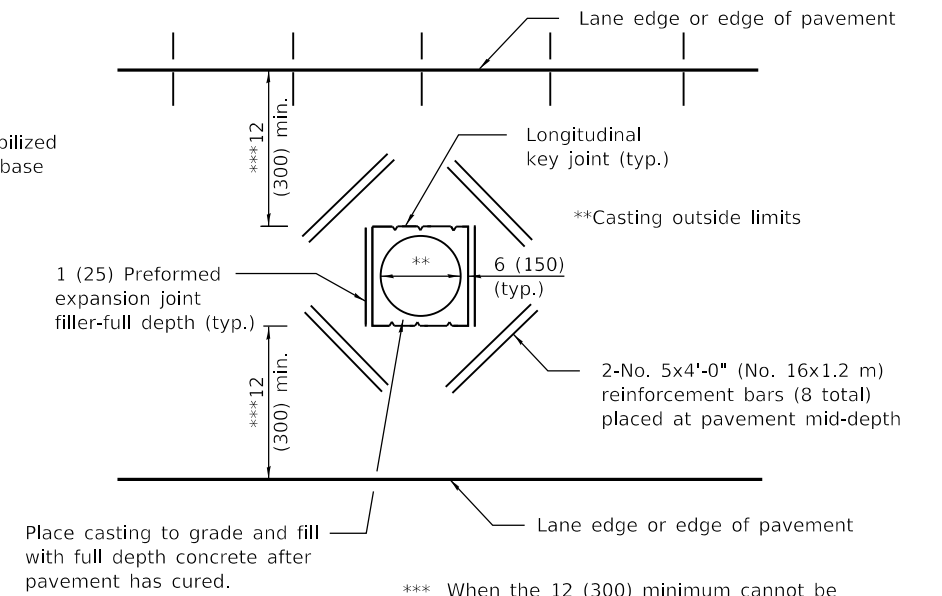
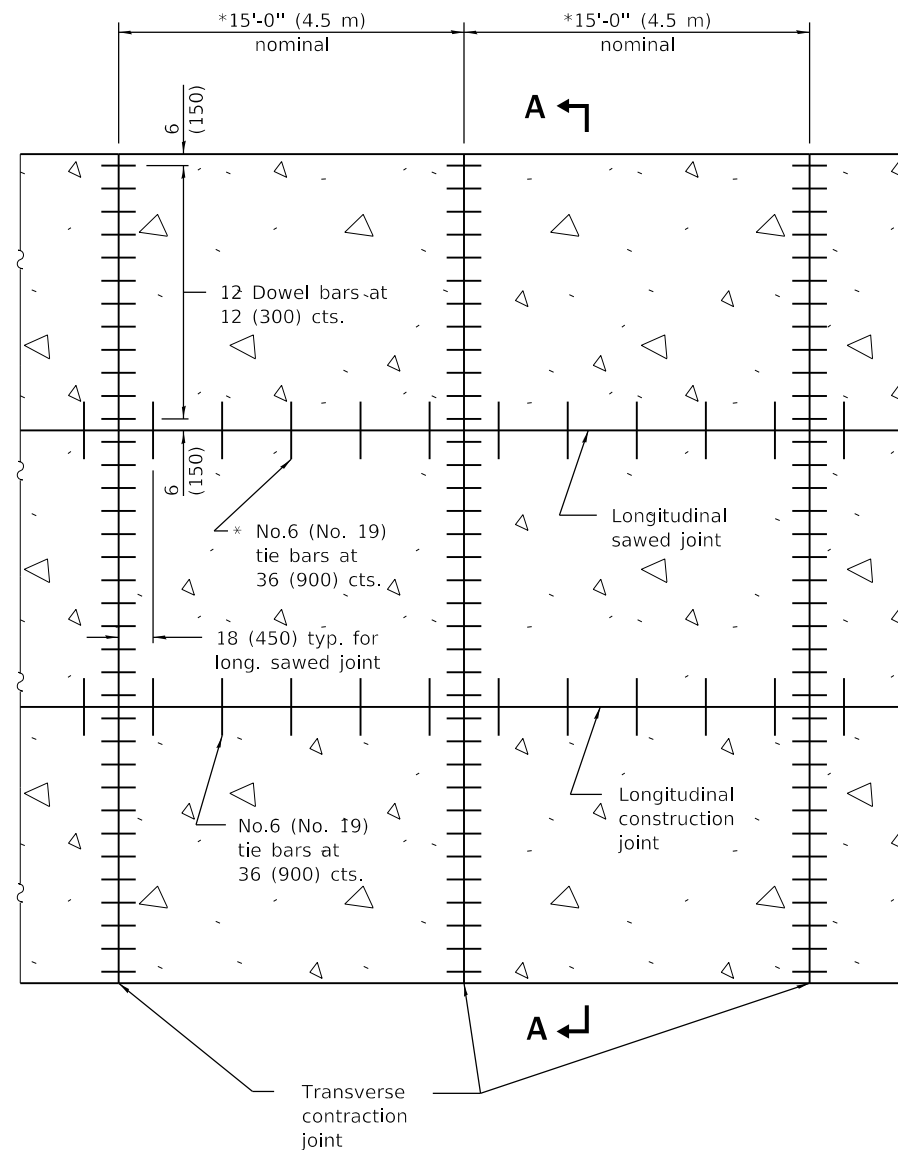


SECTION A-A
(TYPICAL 3-LANE, 1-WAY WITH SHOULDERS)

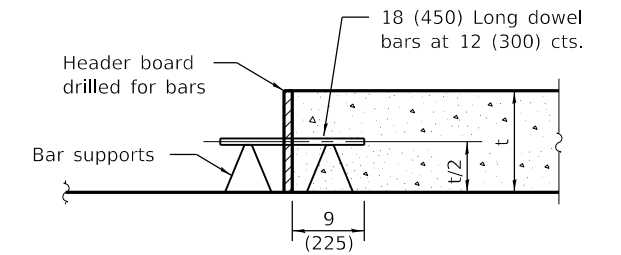


*** When the 12 (300) minimum cannot be achieved, the transverse joints shall be extended to either the longitudinal joint or edge of pavement.

DETAIL OF ADDED REINFORCEMENT FOR PAVEMENT BLOCK-OUTS



PAVEMENT PLAN



TRANSVERSE CONSTRUCTION JOINT

* The 15' (4.5 m) dimension shall be adjusted to 12' (3.6 m) min. to 18' (5.5 m) max. when placed adjacent to existing pcc pavement structure so that the joints are in prolongation. Adjust the tie bar spacing to maintain a clearance of 6 (150) from dowel bars.

GENERAL NOTES

See Standard 420001 for details of joints not shown.

All dimensions are in inches (millimeters) unless otherwise shown.

DATE	REVISIONS
1-1-15	Changed spacing of tie bars to 36 (900).
1-1-15	Added dimension of tie bars from transverse contraction joints.

36' (10.8 m) JOINTED PCC PAVEMENT

STANDARD 420106-06

Illinois Department of Transportation

PASSED January 1, 2018
Michael Beard
 ENGINEER OF POLICY AND PROCEDURES

APPROVED January 1, 2018
Maureen M. Beck
 ENGINEER OF DESIGN AND ENVIRONMENT

ISSUED 1-1-97