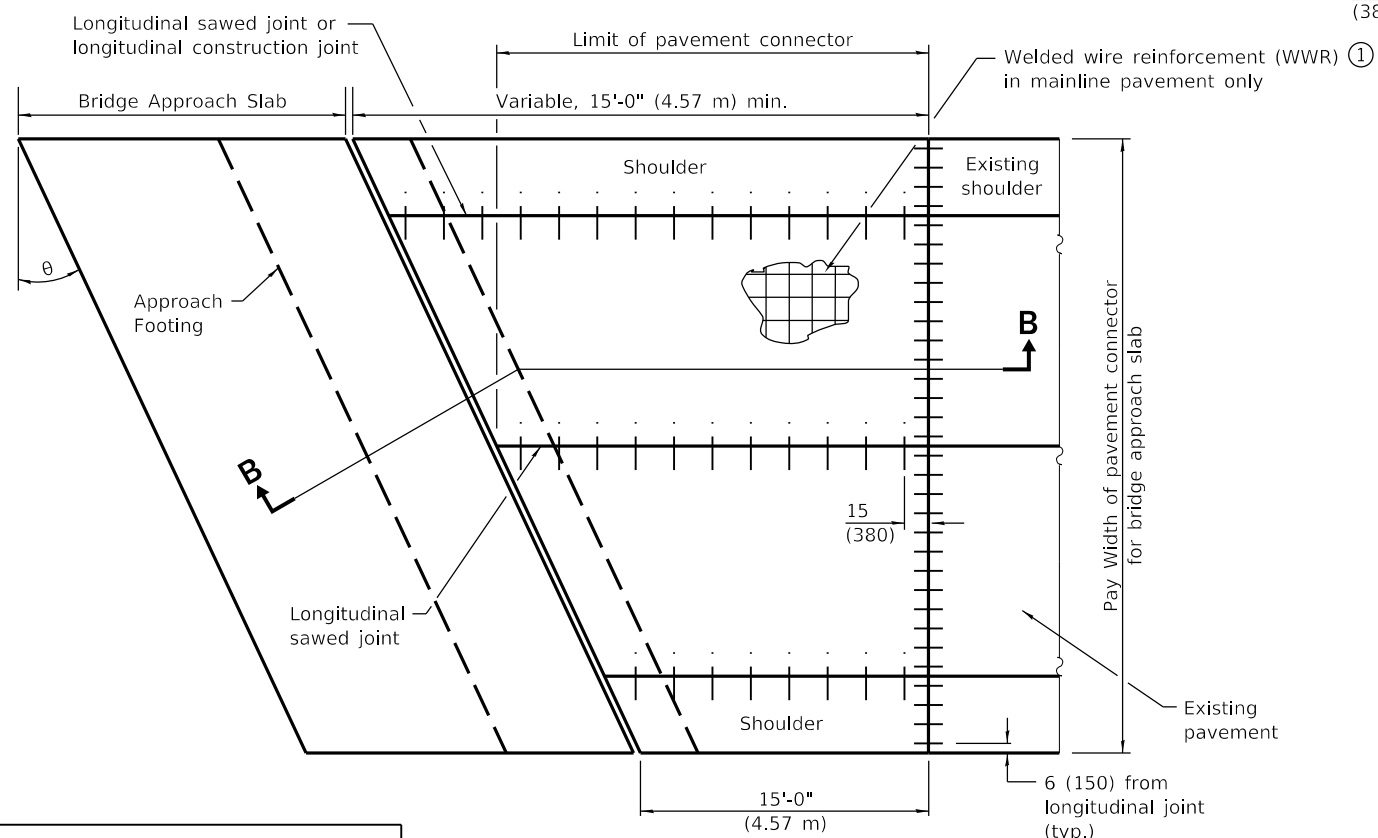
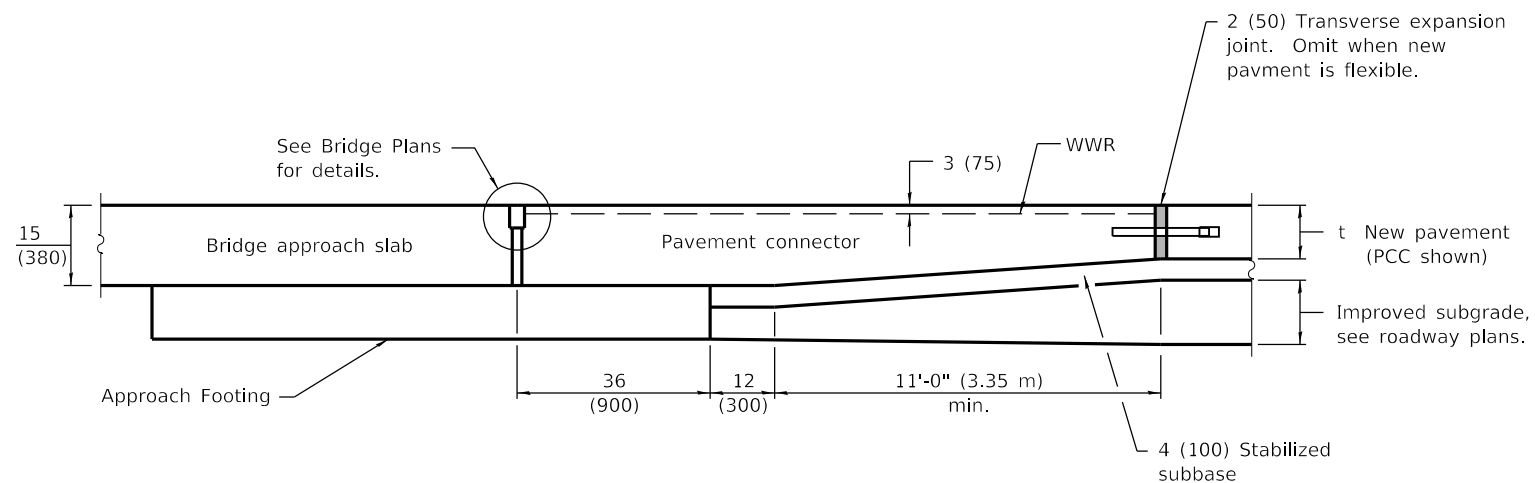


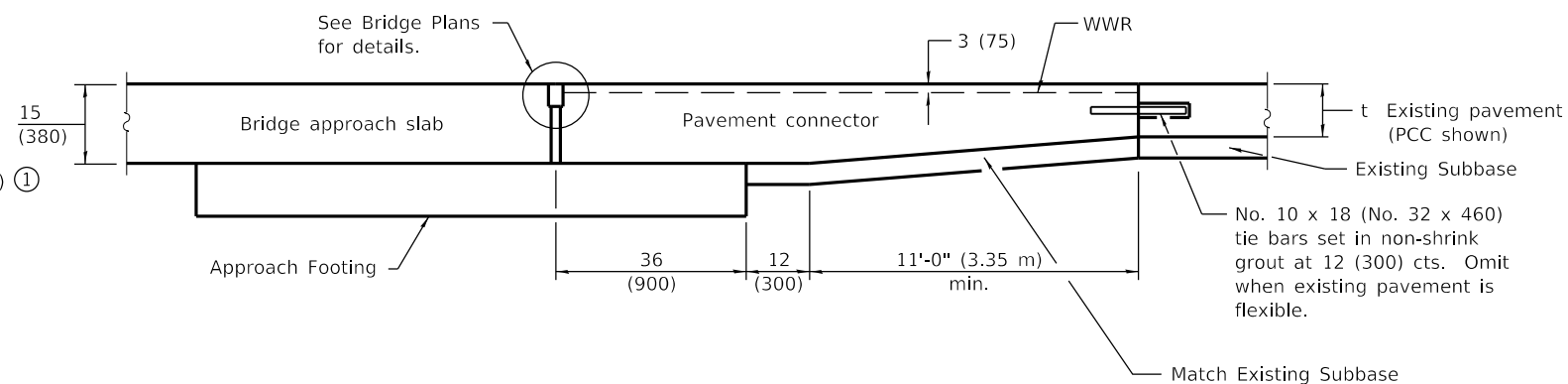
**PLAN
NEW CONSTRUCTION**



**PLAN
EXISTING CONSTRUCTION**



SECTION A-A



SECTION B-B

① WWR shall be 0.11 sq. in./ft. (230 sq. mm/m) in both directions. Maximum wire spacing shall be 6 (150). Minimum lap distance shall be two cross wires.

GENERAL NOTES

- THICKNESS-*t*=Thickness of Pavement.
- See Standard 420001 for pavement joint details not shown.
- See Standard 610001 for shoulder inlet with curb when required.
- See plans for details of bridge approach slab, approach footing and joint treatment.
- All dimensions are in inches (millimeters) unless otherwise shown.

DATE	REVISIONS
1-1-19	Changed rebar in pavement connector to welded wire reinforcement.
4-1-16	Revised pavement connector to be rigid only. Omitted WFB term. joint. Renamed std.

**PAVEMENT CONNECTOR (PCC)
FOR BRIDGE APPROACH SLAB**

STANDARD 420401-13

Illinois Department of Transportation

PASSED January 1 2019
Michael Bond
ENGINEER OF POLICY AND PROCEDURES

APPROVED January 1 2019
John E. ...
ENGINEER OF DESIGN AND ENVIRONMENT

ISSUED 1-1-97