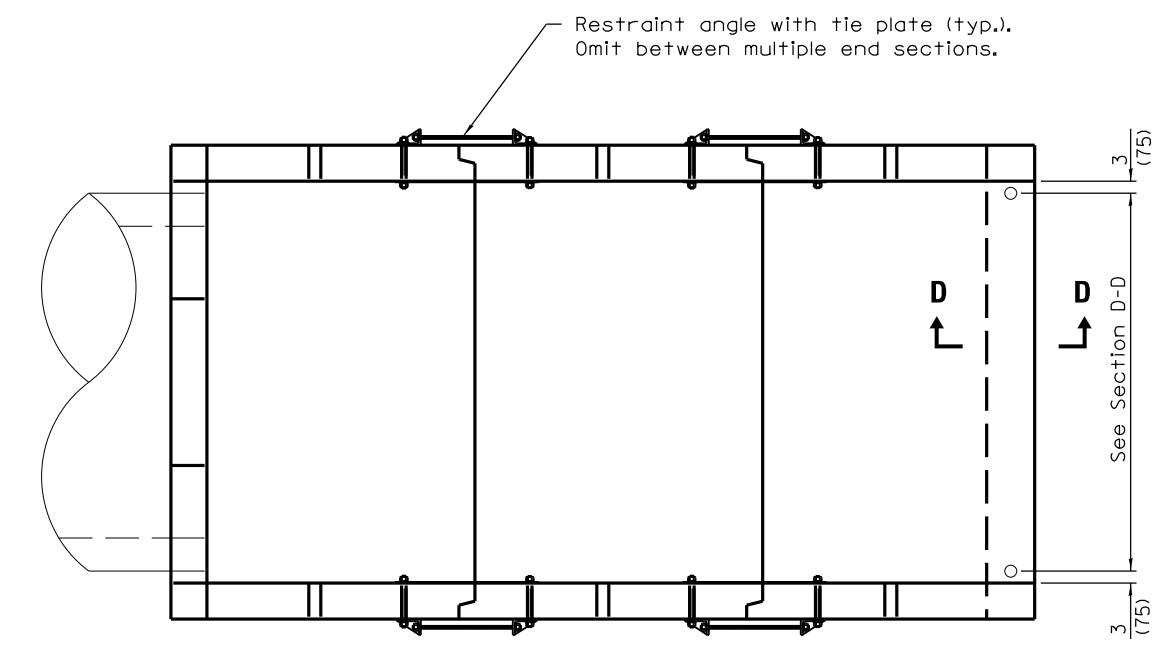
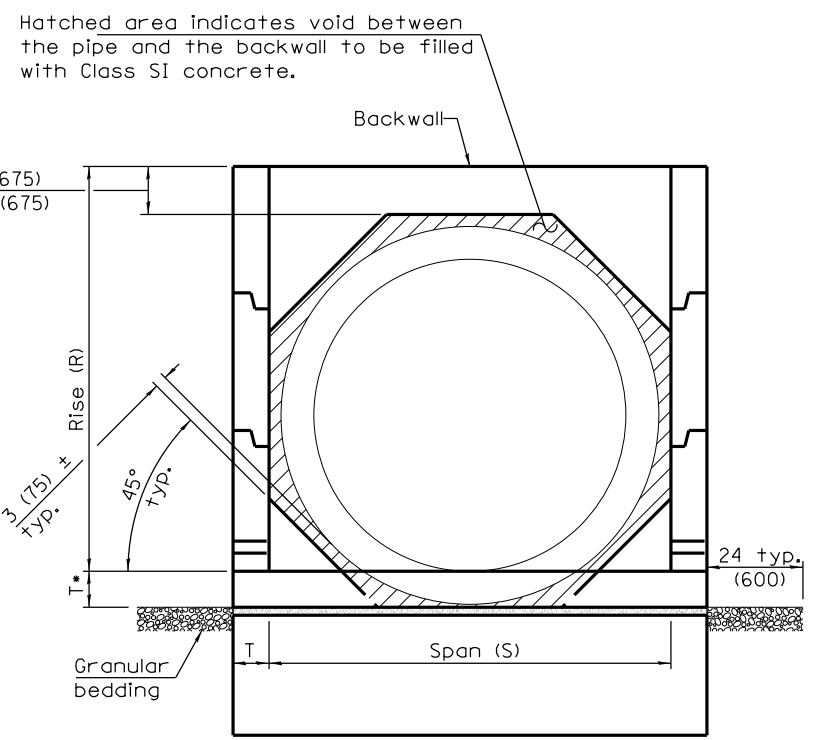


**ELEVATION**

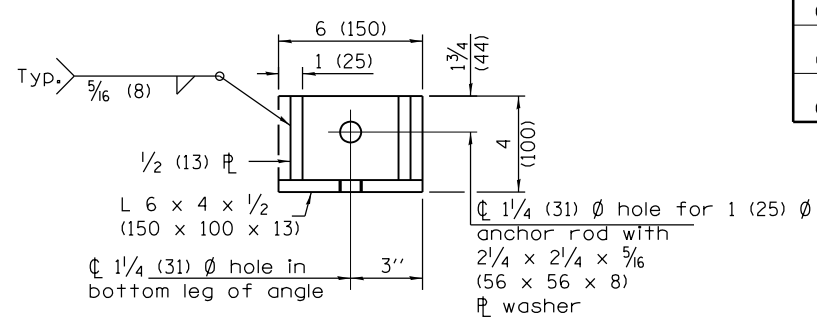
• This dimension shall be increased by 1/2 (38) for CIP field construction. See General Notes.



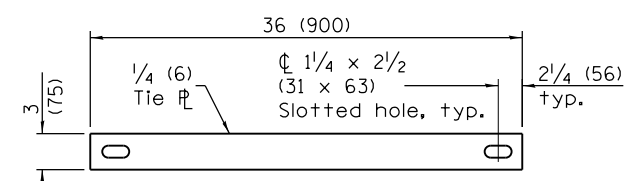
**PLAN**



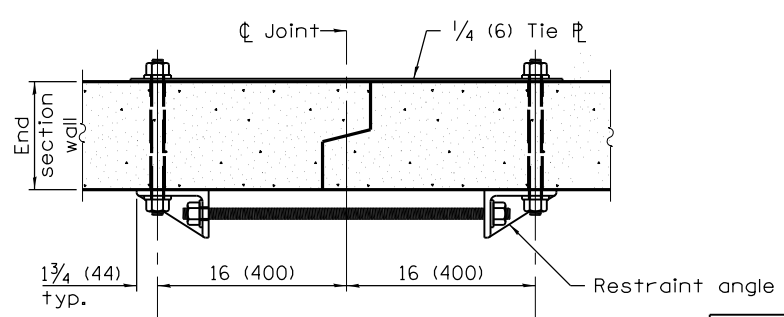
**END VIEW**



**RESTRAINT ANGLE DETAIL**



**TIE PLATE DETAIL**



$\phi$  1 (25)  $\phi$  Anchor rods with 2 1/4 x 2 1/4 x 5/16 (56 x 56 x 8)  $\phi$  washers installed in 1/8 (28)  $\phi$  formed holes in end section walls

**SECTION A-A**  
(Showing end section tie details)

**PIPE CULVERT END SECTION DIMENSIONS**

Pipe I.D.	A	R	S	T	L			
					Slope of End Section			
					1:2	1:3	1:4	1:6
15 (375)	14 (350)	29 (737)	28 (711)	8 (200)	5'-6" (1.68 m)	7'-11" (2.42 m)	10'-4" (3.16 m)	15'-2" (4.63 m)
18 (450)	15 (375)	33 (838)	32 (813)	8 (200)	6'-2" (1.88 m)	8'-11" (2.72 m)	11'-8" (3.56 m)	17'-2" (5.24 m)
21 (525)	15 (375)	36 (914)	34 (864)	8 (200)	6'-8" (2.03 m)	9'-8" (2.95 m)	12'-8" (3.86 m)	18'-8" (5.69 m)
24 (600)	15 (375)	39 (990)	38 (970)	8 (200)	7'-2" (2.19 m)	10'-5" (3.18 m)	13'-8" (4.17 m)	20'-2" (6.15 m)
27 (675)	15 (375)	3'-10" (1.17 m)	3'-6" (1.07 m)	8 (200)	8'-4" (2.54 m)	12'-2" (3.71 m)	16'-0" (4.88 m)	23'-8" (7.21 m)
30 (750)	16 (400)	4'-2" (1.27 m)	3'-10" (1.17 m)	8 (200)	9'-0" (2.75 m)	13'-2" (4.02 m)	17'-4" (5.29 m)	25'-8" (7.83 m)
33 (825)	16 (400)	4'-5" (1.35 m)	4'-0" (1.22 m)	8 (200)	9'-6" (2.90 m)	13'-11" (4.25 m)	18'-4" (5.60 m)	27'-2" (8.29 m)
36 (900)	16 (400)	4'-8" (1.42 m)	4'-4" (1.32 m)	8 (200)	10'-0" (3.05 m)	14'-8" (4.47 m)	19'-4" (5.90 m)	28'-8" (8.74 m)
42 (1050)	17 (425)	5'-3" (1.60 m)	5'-0" (1.52 m)	8 (200)	11'-2" (3.41 m)	16'-5" (5.01 m)	21'-8" (6.61 m)	32'-2" (9.81 m)
48 (1200)	17 (425)	5'-9" (1.75 m)	5'-6" (1.68 m)	8 (200)	12'-2" (3.71 m)	17'-11" (5.46 m)	23'-8" (7.22 m)	35'-2" (10.73 m)
54 (1350)	18 (450)	6'-4" (1.93 m)	6'-2" (1.88 m)	8 (200)	13'-4" (4.07 m)	19'-8" (6.00 m)	26'-0" (7.93 m)	38'-8" (11.79 m)
60 (1500)	18 (450)	6'-10" (2.08 m)	6'-8" (2.03 m)	8 (200)	14'-4" (4.37 m)	21'-2" (6.46 m)	28'-0" (8.54 m)	41'-8" (12.71 m)
66 (1650)	19 (475)	7'-5" (2.26 m)	7'-4" (2.24 m)	8 (200)	15'-6" (4.73 m)	22'-11" (6.99 m)	30'-4" (9.26 m)	45'-2" (13.78 m)
72 (1800)	19 (475)	7'-11" (2.41 m)	7'-10" (2.39 m)	8 (200)	16'-6" (5.03 m)	24'-5" (7.45 m)	32'-4" (9.87 m)	48'-2" (14.70 m)
78 (1950)	21 (525)	8'-6" (2.59 m)	8'-6" (2.59 m)	9 (230)	17'-9" (5.41 m)	26'-3" (8.01 m)	34'-9" (10.60 m)	51'-9" (15.78 m)
84 (2100)	21 (525)	9'-0" (2.74 m)	9'-0" (2.74 m)	9 (230)	18'-9" (5.72 m)	27'-9" (8.46 m)	36'-9" (11.21 m)	54'-9" (16.70 m)

**GENERAL NOTES**

This Standard is for use with single pipe culverts and multi-pipe culvert installations. For multi-pipe culvert installations, place the end sections side-by-side leaving a 3 (75) space between adjacent end section walls and fill the space(s) with Class SI concrete.

The number of segments shown in elevation is for example only. The length and number of precast sections required to construct the end section shall be determined by the Contractor.

See roadway plans for slope (V:H) and pipe inside diameter.

End section may be installed up to ± 15 degrees skewed with roadway.

2 1/4 x 2 1/4 x 5/16 (56 x 56 x 8) plate washers shall be provided under each nut required for the anchor rods. Holes in the walls for the culvert tie assembly may be drilled using core bits in lieu of formed holes.

See Standard 542311 for end sections having traversable pipe grate.

All slope ratios are expressed as units of vertical displacement to units of horizontal displacement (V:H).

All dimensions are in inches (millimeters) unless otherwise shown.

DATE	REVISIONS
4-15-16	Added general note for multiple end sections.
4-1-16	Added note to omit restraint angle and tie plate for mult. end sections.

**CONCRETE END SECTIONS FOR PIPE CULVERTS  
15" (375 mm) THRU 84" (2100 mm) DIA.**

(Sheet 1 of 3)

**STANDARD 542001-06**

Illinois Department of Transportation

APPROVED April 15, 2016  
ENGINEER OF BRIDGES AND STRUCTURES

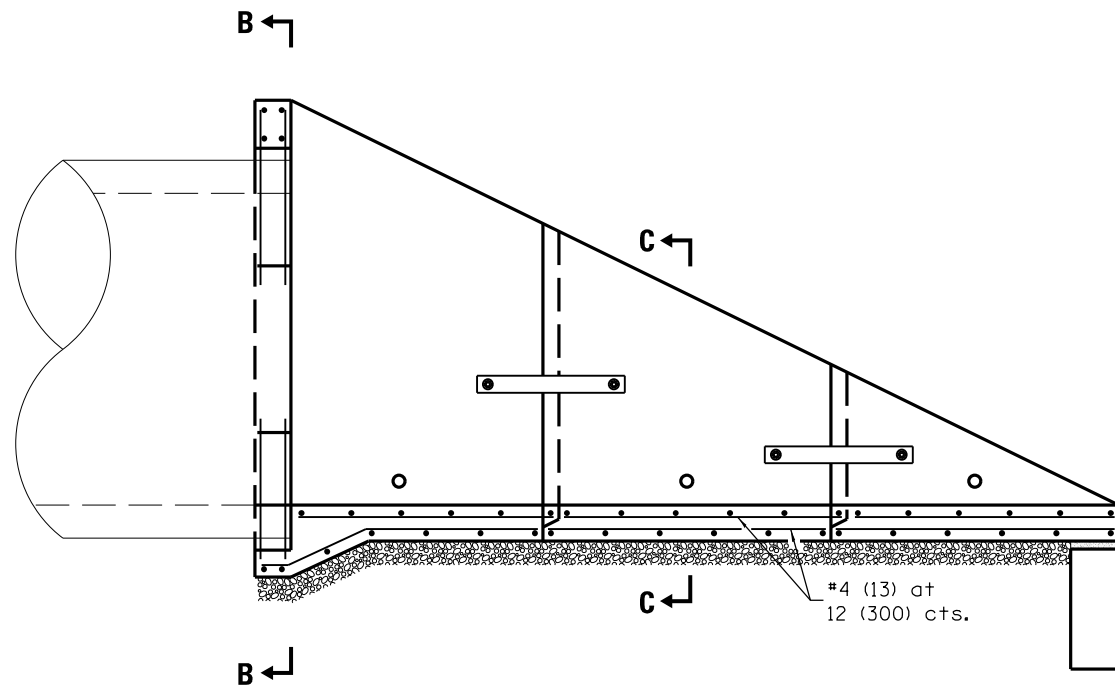
APPROVED April 15, 2016  
ENGINEER OF DESIGN AND ENVIRONMENT

ISSUED 1-1-97

**LAP DIMENSION**

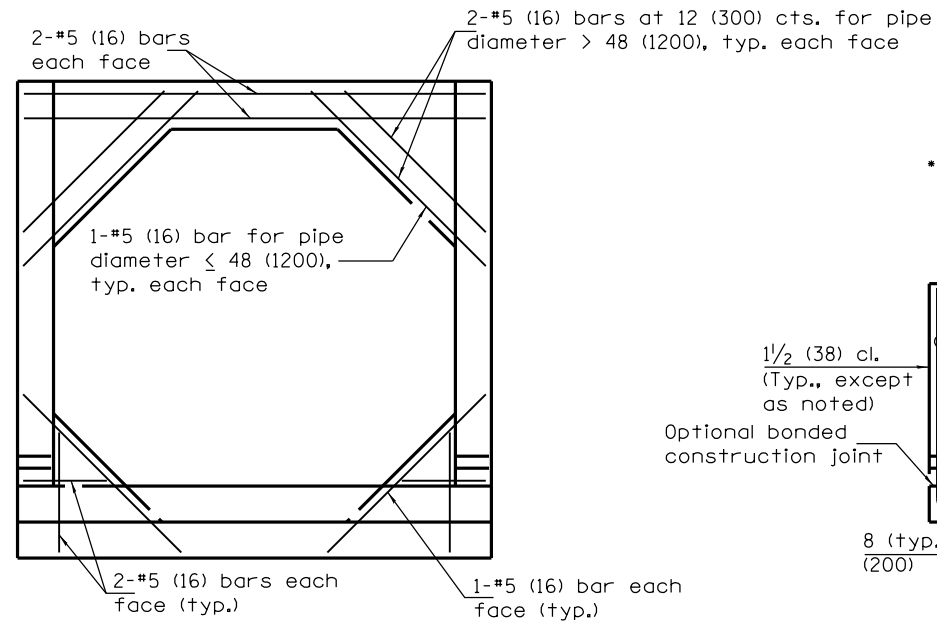
- #4 (13) bar = 17 (425)
- #5 (16) bar = 21 (525)
- #6 (19) bar = 25 (625)

\*The Contractor may use lap splices for the sidewall reinforcement at the locations shown.



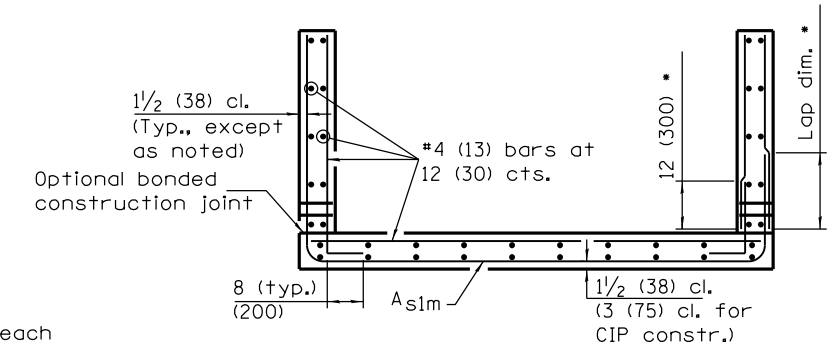
**LONGITUDINAL SECTION**

(Showing bottom slab and backwall reinforcement.)



**SECTION B-B**

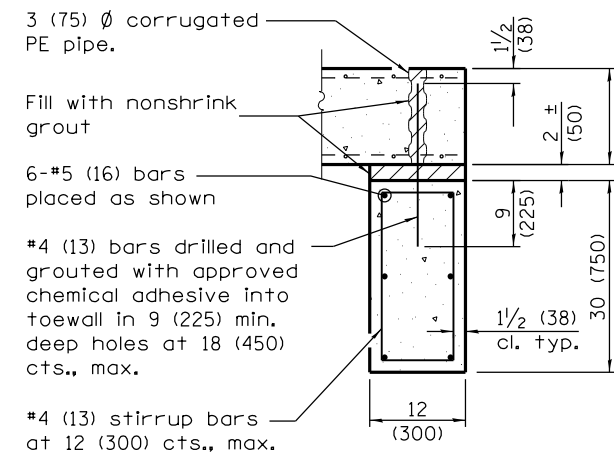
(Showing backwall reinforcement only.)  
(Pipe omitted for clarity.)



**SECTION C-C**

**REINFORCEMENT SCHEDULE**

Pipe I.D.	A <sub>s1m</sub>	
	Bar Size	Bar Spacing
15 (375)	4 (13)	12 (300)
18 (450)	4 (13)	12 (300)
21 (525)	4 (13)	12 (300)
24 (600)	4 (13)	12 (300)
27 (675)	4 (13)	12 (300)
30 (750)	4 (13)	12 (300)
33 (825)	4 (13)	12 (300)
36 (900)	4 (13)	12 (300)
42 (1050)	4 (13)	8 (200)
48 (1200)	4 (13)	8 (200)
54 (1350)	5 (16)	8 (200)
60 (1500)	5 (16)	8 (200)
66 (1650)	5 (16)	8 (200)
72 (1800)	6 (19)	8 (200)
78 (1950)	6 (19)	8 (200)
84 (2100)	6 (19)	8 (200)



**SECTION D-D**

Illinois Department of Transportation

APPROVED April 15, 2016  
*[Signature]*  
 ENGINEER OF BRIDGES AND STRUCTURES

APPROVED April 15, 2016  
*[Signature]*  
 ENGINEER OF DESIGN AND ENVIRONMENT

ISSUED 1-1-97

**CONCRETE END SECTIONS FOR PIPE CULVERTS  
15" (375 mm) THRU 84" (2100 mm) DIA.**

(Sheet 2 of 3)

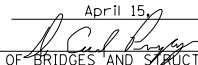
**STANDARD 542001-06**

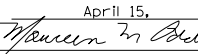
**QUANTITIES**

Pipe I.D.	Concrete yd <sup>3</sup> (m <sup>3</sup> ) ①				Reinforcement Without Lap lbs. (kg)				Reinforcement With Lap lbs (kg)			
	Slope of End Section				Slope of End Section				Slope of End Section			
	1:2	1:3	1:4	1:6	1:2	1:3	1:4	1:6	1:2	1:3	1:4	1:6
15 (375)	1.3 (1.0)	1.7 (1.3)	2.1 (1.6)	2.8 (2.1)	190 (85.2)	230 (104.1)	280 (123.3)	360 (159.2)	210 (94.9)	260 (117.6)	310 (140.3)	410 (182.9)
18 (450)	1.6 (1.2)	2.1 (1.6)	2.6 (2.0)	3.5 (2.7)	230 (104.3)	290 (131.1)	350 (158.0)	460 (207.3)	260 (114.8)	330 (146.0)	400 (177.3)	520 (234.0)
21 (525)	1.8 (1.4)	2.3 (1.8)	2.9 (2.2)	3.9 (3.0)	260 (114.5)	320 (143.3)	380 (172.2)	510 (229.9)	280 (126.5)	360 (159.7)	430 (193.0)	580 (259.5)
24 (600)	2.1 (1.6)	2.7 (2.1)	3.3 (2.5)	4.5 (3.4)	270 (121.9)	350 (155.8)	420 (189.3)	560 (251.5)	300 (133.9)	390 (172.8)	470 (211.6)	630 (282.6)
27 (675)	2.6 (2.0)	3.4 (2.6)	4.2 (3.2)	5.8 (4.4)	350 (155.5)	440 (198.5)	540 (244.4)	740 (336.3)	380 (169.6)	480 (217.8)	600 (269.6)	830 (373.2)
30 (750)	2.9 (2.2)	3.9 (3.0)	4.9 (3.7)	6.8 (5.2)	380 (169.6)	490 (219.2)	600 (271.9)	830 (374.0)	410 (184.5)	530 (240.0)	660 (299.2)	920 (413.9)
33 (825)	3.2 (2.4)	4.3 (3.3)	5.3 (4.1)	7.4 (5.7)	400 (179.7)	520 (234.9)	640 (290.3)	880 (397.6)	430 (195.2)	570 (257.2)	710 (319.0)	970 (438.9)
36 (900)	3.5 (2.7)	4.7 (3.6)	5.9 (4.5)	8.3 (6.3)	440 (197.8)	580 (262.4)	720 (323.8)	990 (449.4)	480 (214.2)	630 (286.1)	780 (354.0)	1090 (493.7)
42 (1050)	4.3 (3.3)	5.8 (4.4)	7.3 (5.6)	10.3 (7.9)	570 (256.4)	770 (346.4)	950 (429.0)	1330 (601.3)	620 (279.4)	840 (380.0)	1040 (471.6)	1470 (663.7)
48 (1200)	5.0 (3.8)	6.8 (5.2)	8.6 (6.6)	12.2 (9.3)	670 (301.1)	910 (409.9)	1140 (514.8)	1610 (728.2)	720 (325.6)	990 (445.8)	1240 (561.2)	1760 (796.8)
54 (1350)	6.0 (4.6)	8.2 (6.3)	10.3 (7.9)	14.7 (11.2)	890 (403.6)	1200 (544.5)	1530 (692.0)	2170 (985.0)	990 (448.6)	1340 (608.1)	1710 (775.8)	2440 (1108.2)
60 (1500)	6.8 (5.2)	9.3 (7.1)	11.8 (9.0)	16.8 (12.8)	1020 (461.5)	1400 (635.3)	1780 (806.8)	2530 (1149.8)	1120 (508.8)	1550 (704.5)	1980 (896.8)	2820 (1281.5)
66 (1650)	7.9 (6.0)	10.9 (8.3)	13.8 (10.6)	19.7 (15.1)	1150 (519.0)	1570 (712.4)	2010 (911.1)	2880 (1305.8)	1260 (570.2)	1730 (786.1)	2220 (1007.9)	3190 (1449.3)
72 (1800)	8.8 (6.7)	12.2 (9.3)	15.5 (11.9)	22.2 (17.0)	1520 (689.9)	2120 (962.1)	2690 (1222.5)	3880 (1761.3)	1710 (777.0)	2400 (1088.2)	3050 (1384.8)	4410 (2001.0)
78 (1950)	11.4 (8.7)	15.8 (12.1)	20.1 (15.4)	28.9 (22.1)	1750 (791.1)	2400 (1090.7)	3100 (1409.0)	4490 (2039.7)	1950 (885.5)	2700 (1223.1)	3490 (1583.9)	5060 (2298.9)
84 (2100)	12.6 (9.6)	17.4 (13.3)	22.3 (17.0)	32.1 (24.5)	1900 (862.7)	2680 (1217.4)	3430 (1558.6)	4960 (2254.4)	2120 (959.6)	3000 (1359.6)	3840 (1743.2)	5560 (2526.8)

① For cast-in-place construction, increase concrete volumes by approximately 12%.

Illinois Department of Transportation

APPROVED April 15, 2016  
  
 ENGINEER OF BRIDGES AND STRUCTURES

APPROVED April 15, 2016  
  
 ENGINEER OF DESIGN AND ENVIRONMENT

ISSUED 1-1-97

**CONCRETE END SECTIONS FOR PIPE CULVERTS  
 15" (375 mm) THRU 84" (2100 mm) DIA.**

(Sheet 3 of 3)

**STANDARD 542001-06**