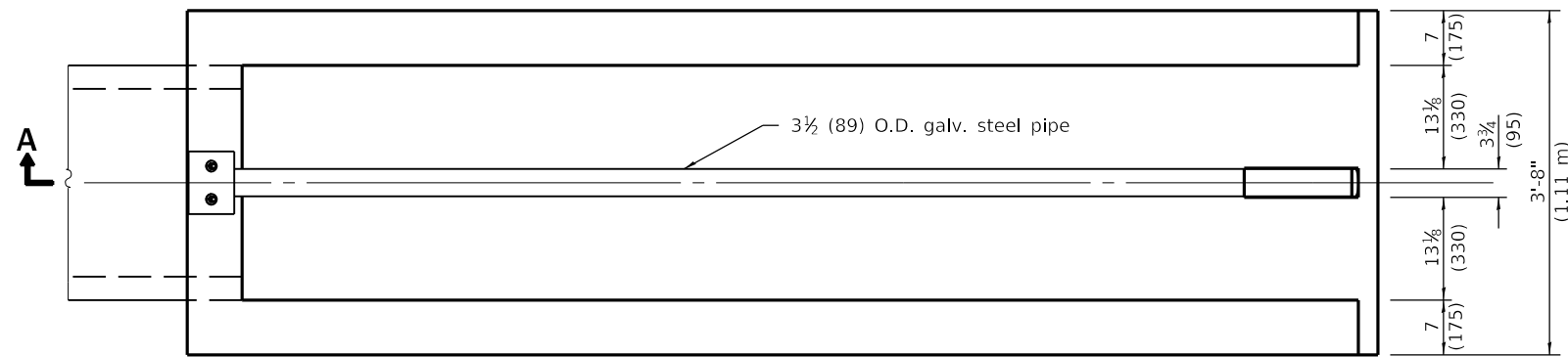
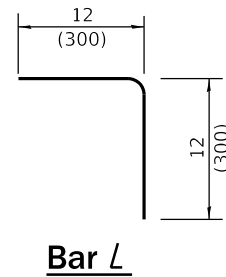


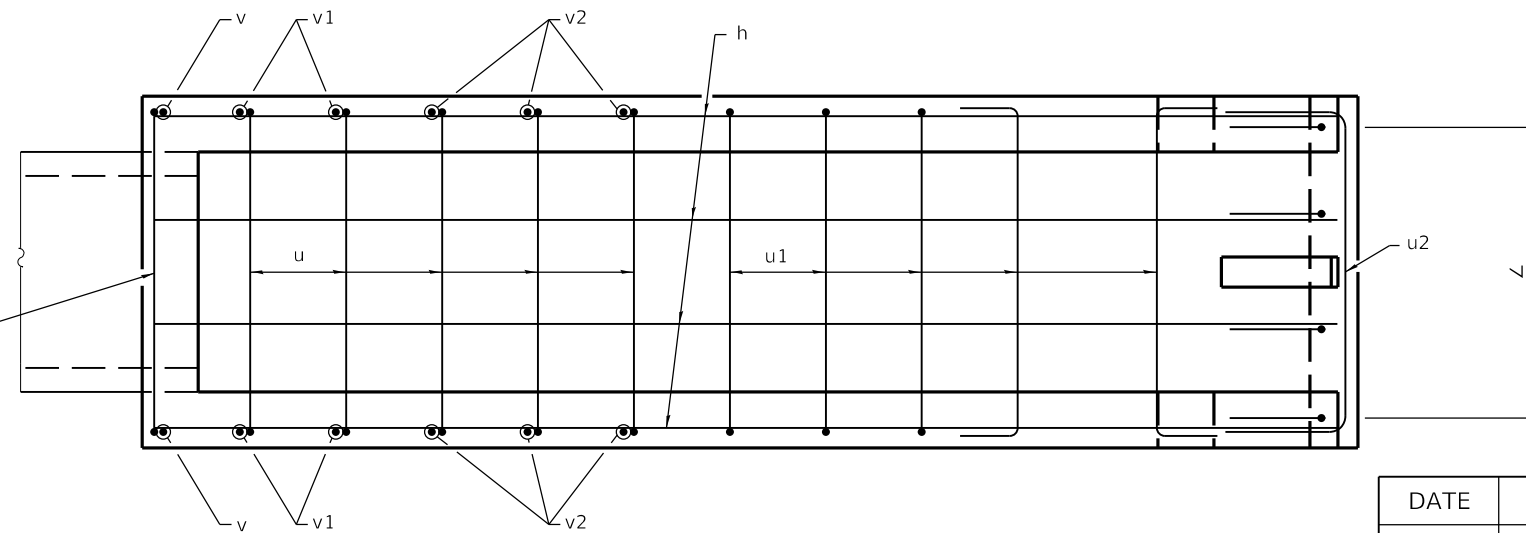
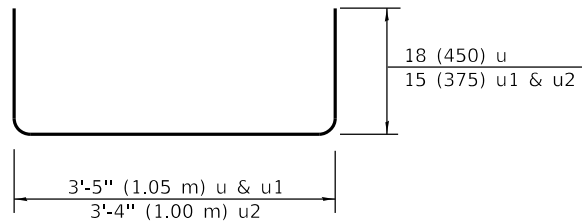
**SECTION A-A**

Material required for one inlet box

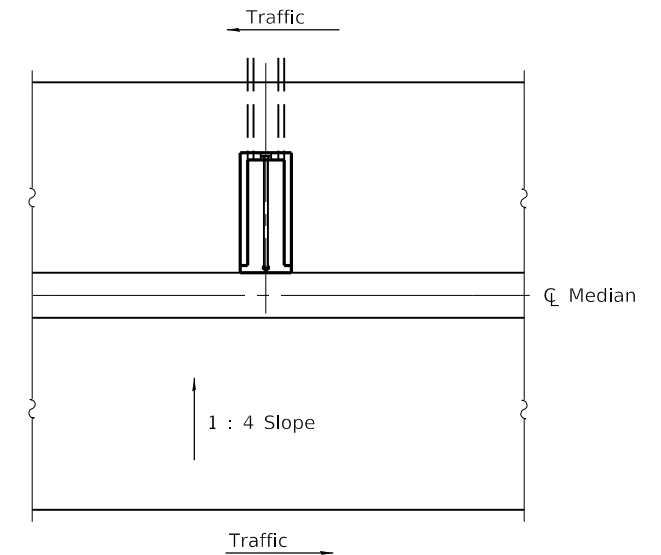
Bar	Qty.	Size	Length
h	4	No. 4 (No. 13)	12'-4" (3.76 m)
h1	2	No. 4 (No. 13)	9'-4" (2.84 m)
h2	2	No. 4 (No. 13)	12'-8" (3.86 m)
∟	4	No. 4 (No. 13)	2'-0" (0.60 m)
u	7	No. 4 (No. 13)	6'-5" (1.95 m)
u1	5	No. 4 (No. 13)	5'-11" (1.80 m)
u2	2	No. 4 (No. 13)	5'-10" (1.75 m)
v	2	No. 4 (No. 13)	34 (864)
v1	4	No. 4 (No. 13)	27 (680)
v2	6	No. 4 (No. 13)	18 (460)
Concrete		cu. yds. (m <sup>3</sup> )	1.9 (1.5)
Reinf. Bars		lbs. (kg)	141 (64.0)
Galv. Steel Pipe		3 1/2 (89) O.D.	12'-5 7/8" (3.80 m)



**PLAN**



**PLAN OF REINFORCEMENT**



**GENERAL NOTES**

All slope ratios are expressed as units of vertical displacement to units of horizontal displacement (V:H).

All dimensions are in inches (millimeters) unless otherwise shown.

DATE	REVISIONS
4-1-16	Increased length of inlet box to provide clearance for top u-bolt.
1-1-09	Switched units to English (metric).

**INLET BOX  
TYPE 24 (600) B**

(Sheet 1 of 2)

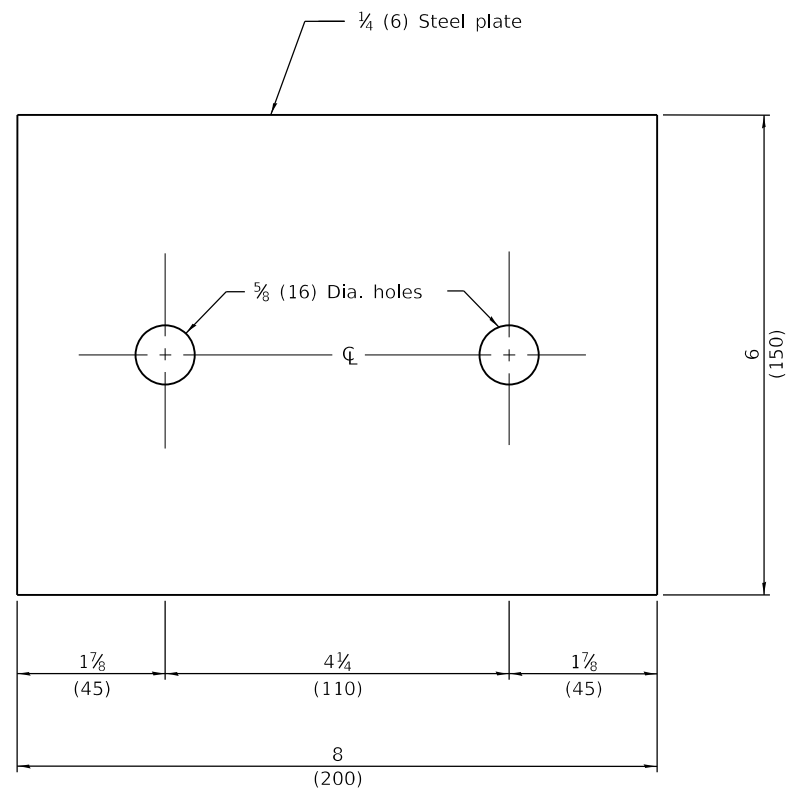
**STANDARD 542506-03**

Illinois Department of Transportation

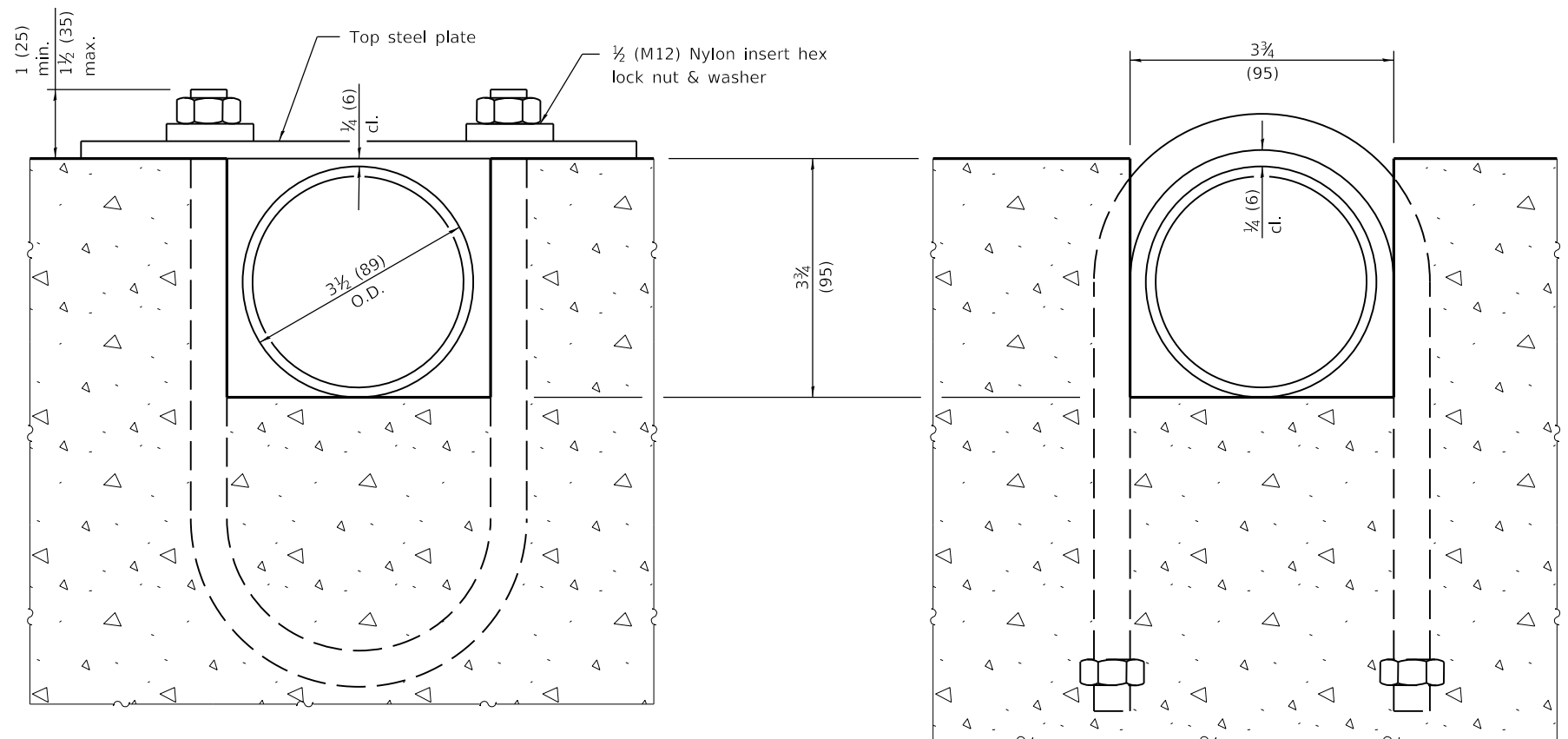
PASSED Michael Beard April 1, 2016  
ENGINEER OF POLICY AND PROCEDURES

APPROVED [Signature] April 1, 2016  
ENGINEER OF DESIGN AND ENVIRONMENT

ISSUED 1-1-09

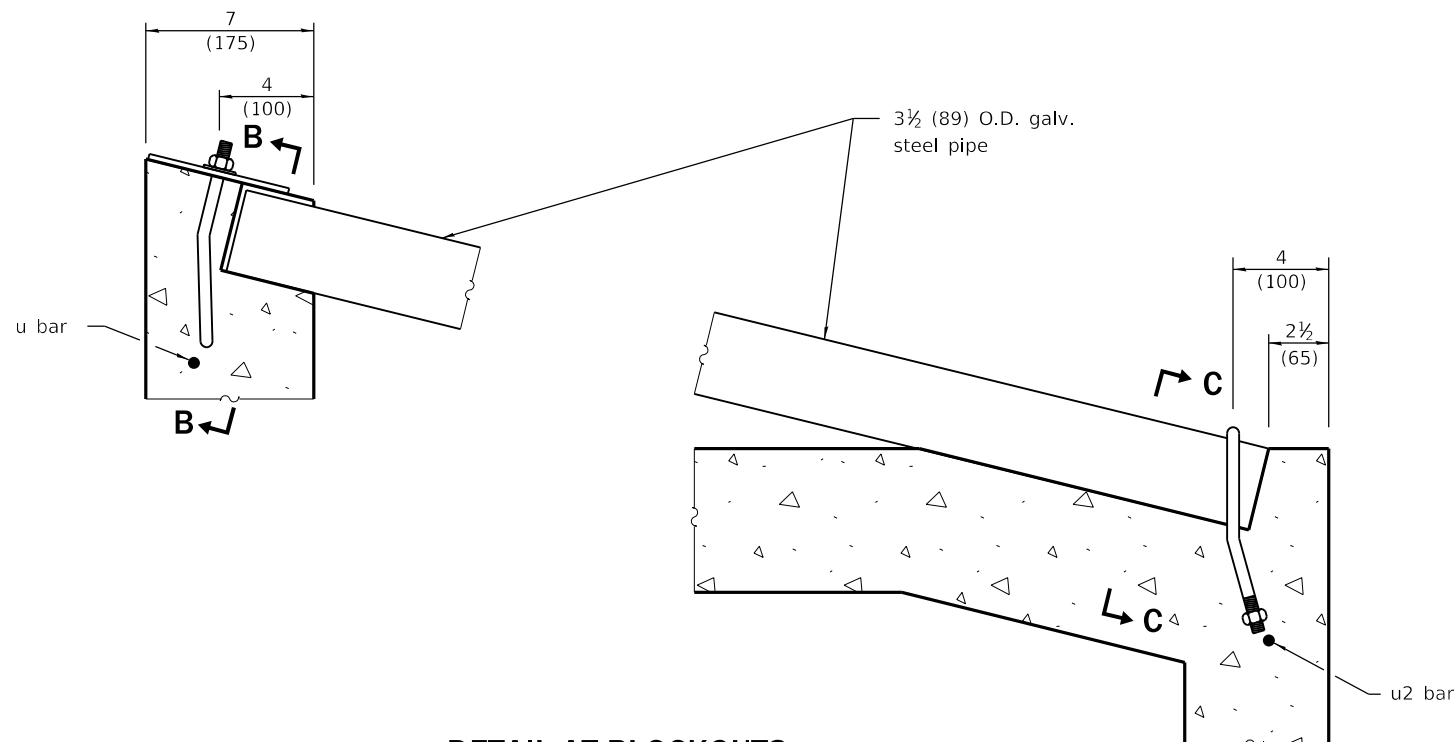


**TOP ANCHOR PLATE**  
(1 - required)

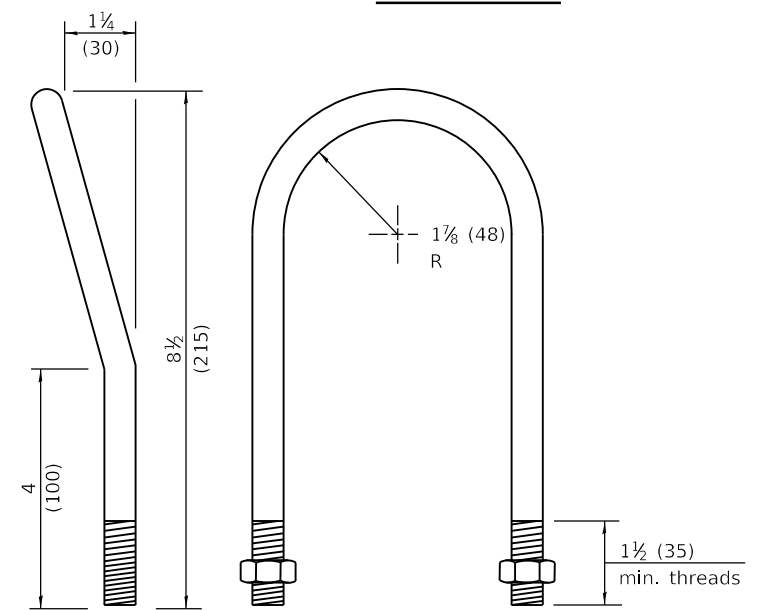


**SECTION B-B**

**SECTION C-C**



**DETAIL AT BLOCKOUTS**



**1/2 (M12) U BOLT**  
(2 - required)

Illinois Department of Transportation

PASSED April 1, 2016  
*Michael Beard*  
ENGINEER OF POLICY AND PROCEDURES

APPROVED April 1, 2016  
*[Signature]*  
ENGINEER OF DESIGN AND ENVIRONMENT

ISSUED 1-1-97

**INLET BOX**  
**TYPE 24 (600) B**

(Sheet 2 of 2)

**STANDARD 542506-03**