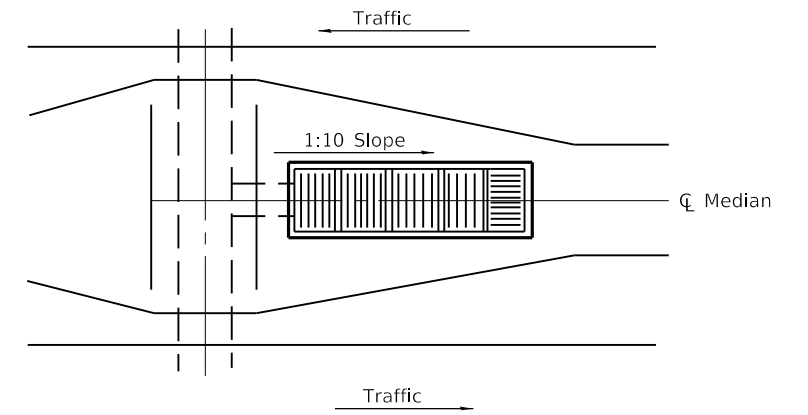
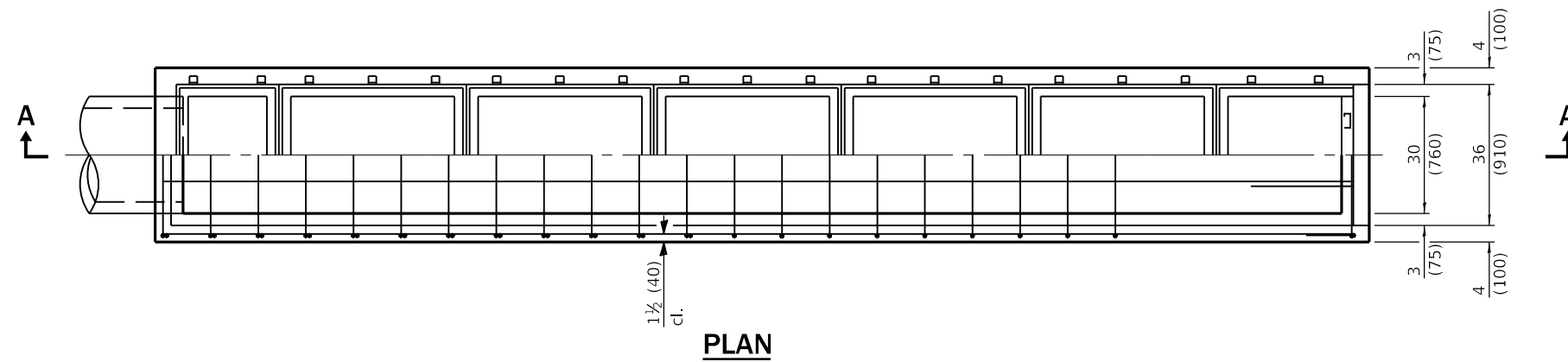


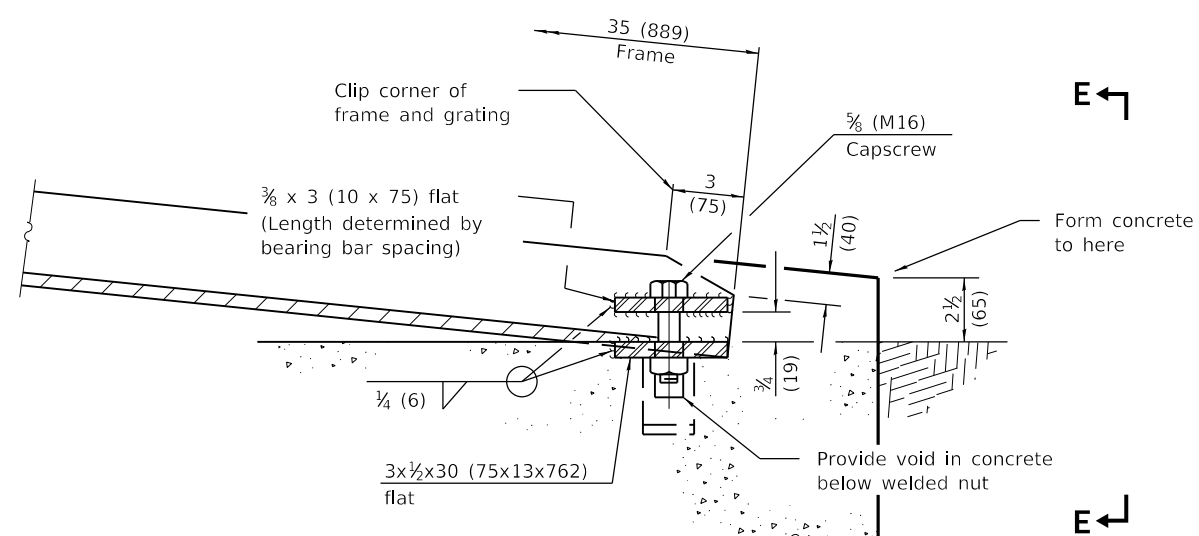
**SECTION A-A**



Sketch showing location and direction of main bearing bars in relation to C Median



**PLAN**



**DETAIL A**

**GENERAL NOTES**

If field conditions permit, the bottom of the inlet box shall have a 2 (50) slope.

All slope ratios are expressed as units of vertical displacement to units of horizontal displacement (V:H).

All dimensions are in inches (millimeters) unless otherwise shown.

DATE	REVISIONS
1-1-11	Corrected weld symbols on Sheet 2.
1-1-09	Switched units to English (metric). Revised General Notes.

**INLET BOX  
TYPE 24 (600) F**

(Sheet 1 of 2)

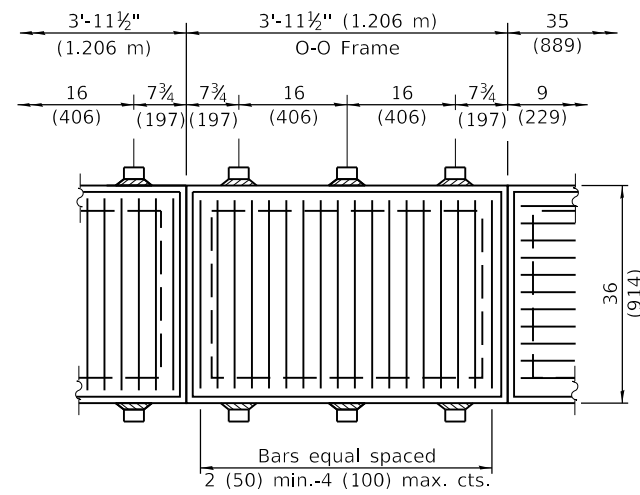
**STANDARD 542526-03**

Illinois Department of Transportation

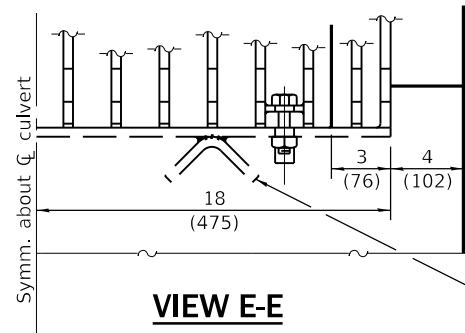
PASSED January 1, 2011  
*Michael Beard*  
 ENGINEER OF POLICY AND PROCEDURES

APPROVED January 1, 2011  
*Spencer*  
 ENGINEER OF DESIGN AND ENVIRONMENT

ISSUED 1-1-97  
 76-T



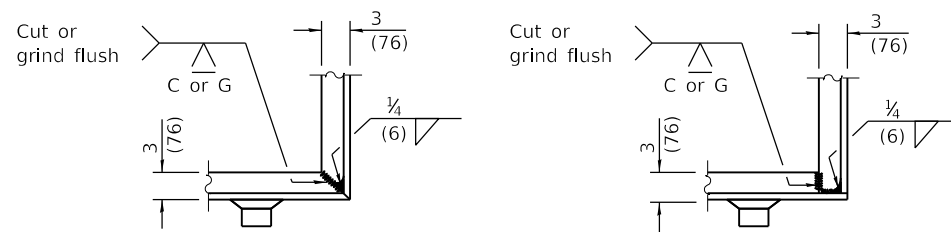
**TYPICAL STEEL GRATING**



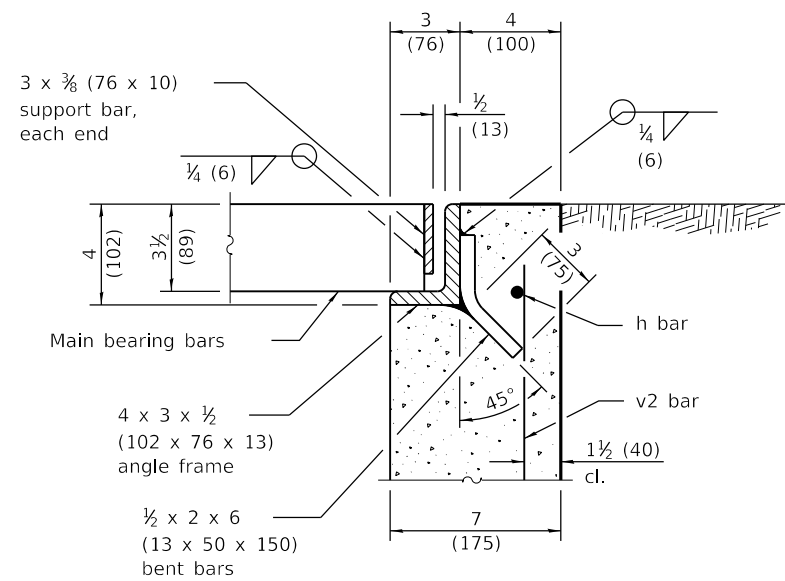
1/2 x 1 1/2 x 5 (12.7 x 40 x 125)  
1/4 (6) cfw to 1/2 x 3 (12.7 x 75) flat

Material Required for One Inlet Box

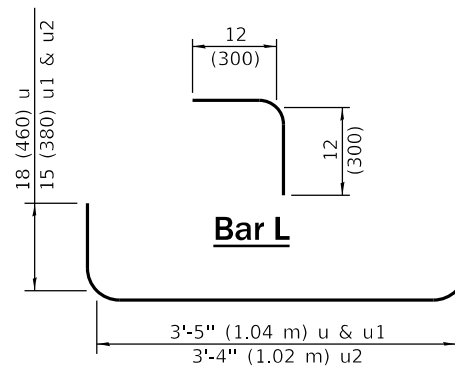
Bar	No.	Size	Length
h	6	No. 4 (No. 13)	25'-0" (7.62 m)
h1	2	No. 4 (No. 13)	11'-0" (3.35 m)
L	4	No. 4 (No. 13)	24 (600)
u	17	No. 4 (No. 13)	6'-5" (1.96 m)
u1	6	No. 4 (No. 13)	5'-11" (1.80 m)
u2	2	No. 4 (No. 13)	5'-10" (1.78 m)
v	2	No. 4 (No. 13)	30 (760)
v1	6	No. 4 (No. 13)	27 (690)
v2	6	No. 4 (No. 13)	24 (610)
v3	10	No. 4 (No. 13)	18 (460)
Concrete		cu. yds. (m <sup>3</sup> )	3.4 (2.6)
Reinf. Bars		lbs. (kg)	250 (113)
Grating		(sq. ft.) (m <sup>2</sup> )	70.4 (6.54)



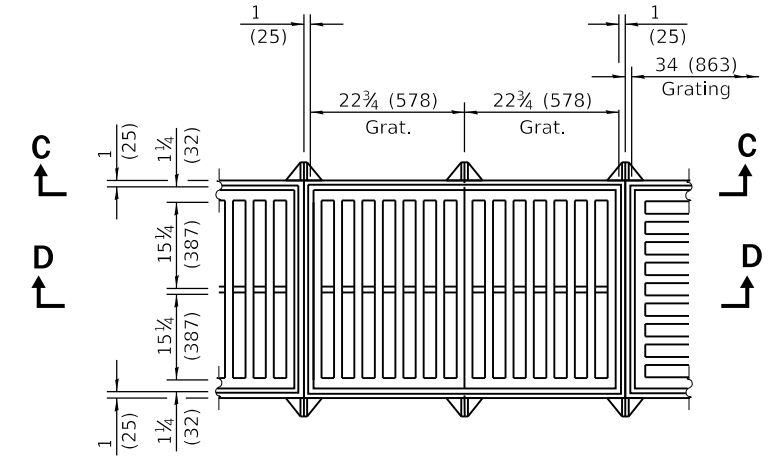
**TYPICAL CORNER OF STEEL GRATING FRAME**



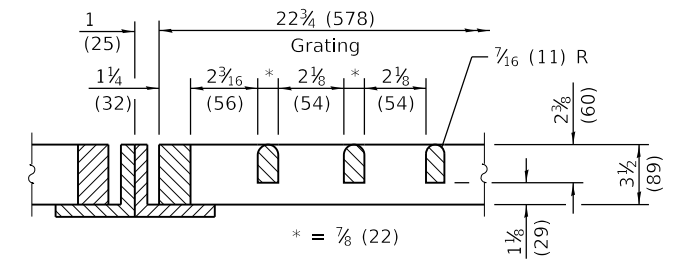
**SECTION B-B**



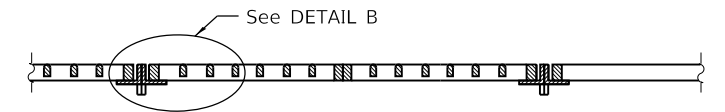
**BARS u, u1 & u2**



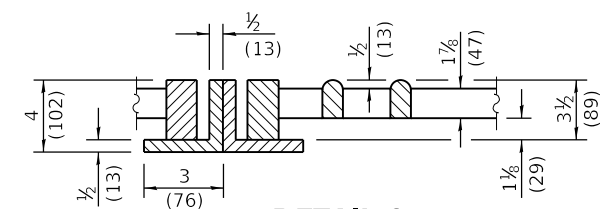
**TYPICAL CAST GRATING**



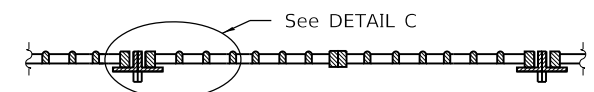
**DETAIL B**



**SECTION C-C**



**DETAIL C**



**SECTION D-D**

**INLET BOX  
TYPE 24 (600) F**

(Sheet 2 of 2)

**STANDARD 542526-03**