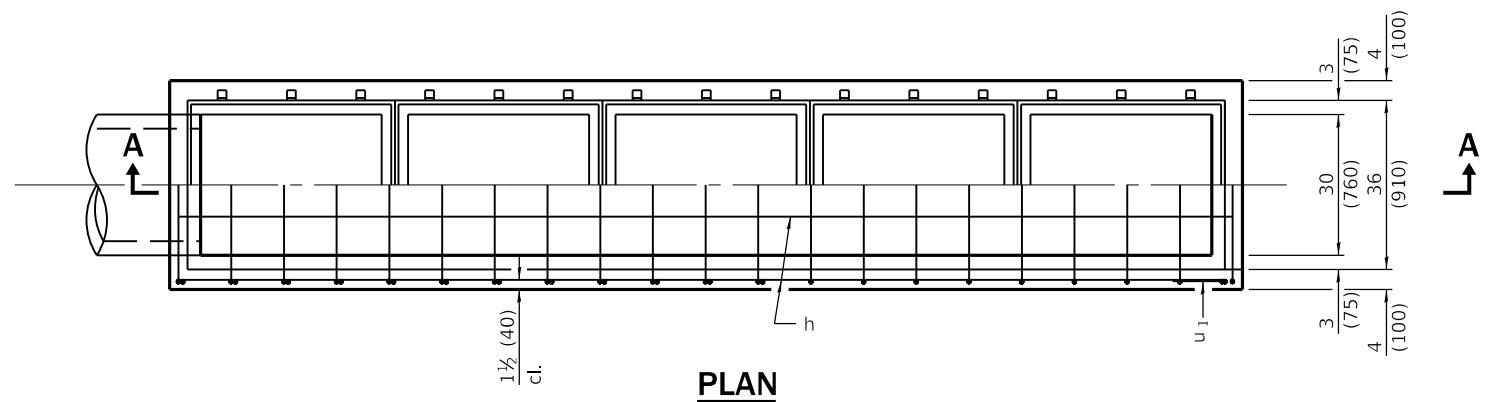
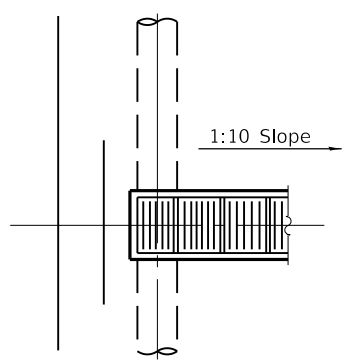


**SECTION A-A**

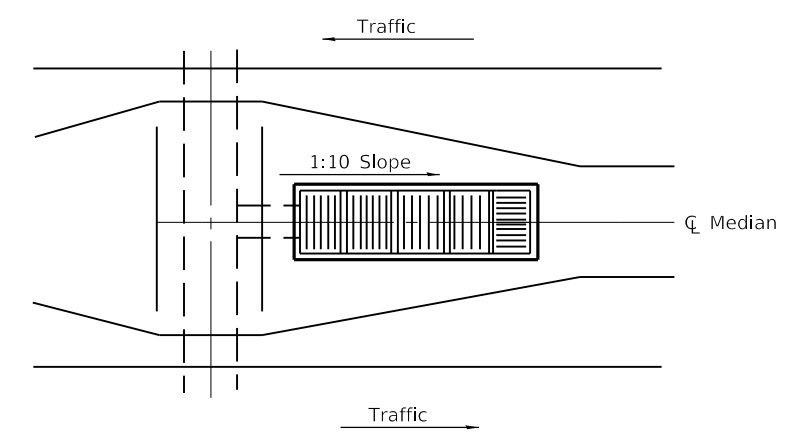
NOTE:  
Culvert pipe may exit from the side (or sides) by changing reinforcement bars in that area and in the headwall end of box.



**PLAN**



Detail showing exit from side (or sides)



Sketch showing location and direction of main bearing bars in relation to  $\text{C Median}$  (showing exit from end)

**GENERAL NOTES**

If field conditions will permit, bottom of inlet box shall have 2 (50) slope.  
All slope ratios are expressed as units of vertical displacement to units of horizontal displacement (V:H).  
All dimensions are in inches (millimeters) unless otherwise shown.

Illinois Department of Transportation

PASSED January 1, 2011  
*Michael Beard*  
ENGINEER OF POLICY AND PROCEDURES

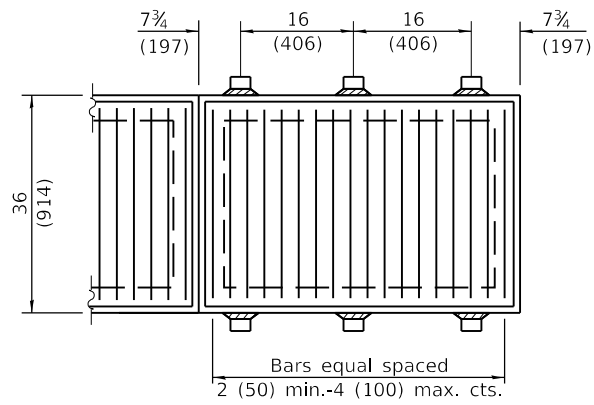
APPROVED January 1, 2011  
*Scott Schick*  
ENGINEER OF DESIGN AND ENVIRONMENT

ISSUED 1-1-97

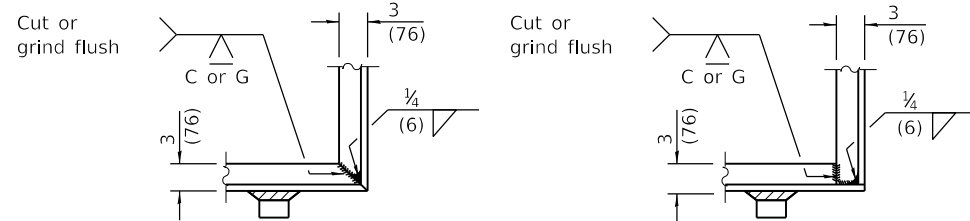
DATE	REVISIONS
1-1-11	Added 36 (910) dimension to plan view. Corrected weld symbols on Sheet 2.
1-1-09	Switched units to English (metric). Revised General Notes.

**INLET BOX**  
**TYPE 24 (600) G**  
(Sheet 1 of 2)

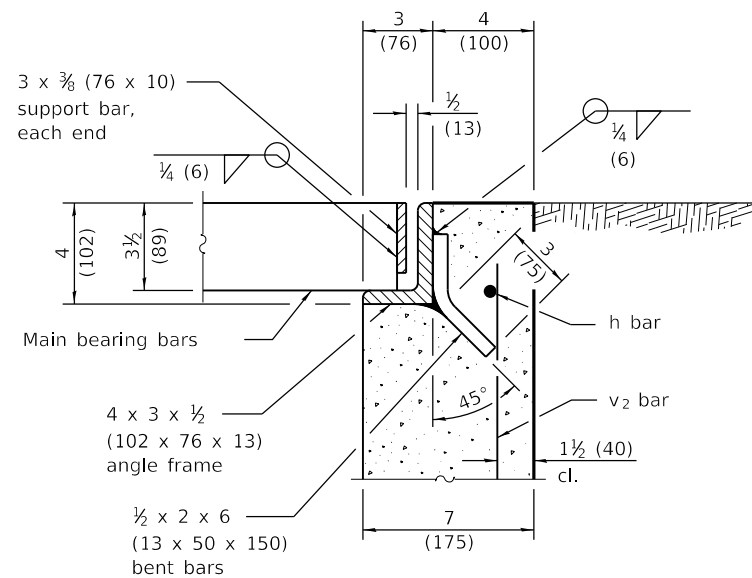
**STANDARD 542531-04**



**TYPICAL STEEL GRATING**



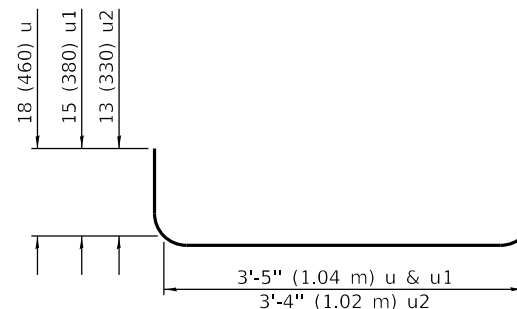
**TYPICAL CORNER OF STEEL GRATING FRAME**



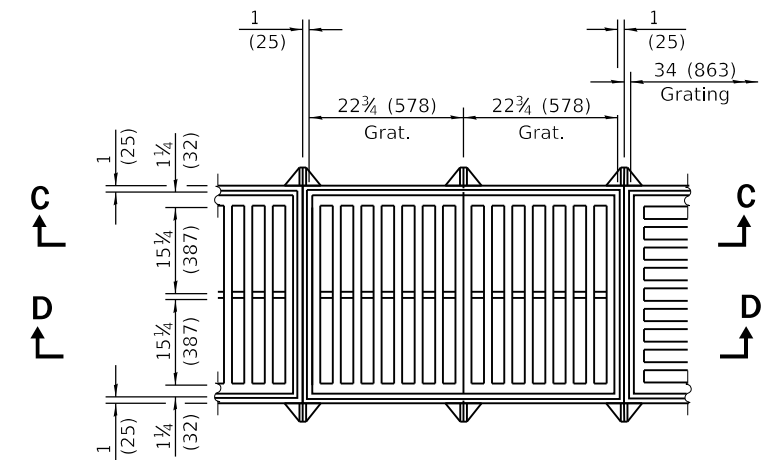
**SECTION B-B**

Material Required for One Inlet Box

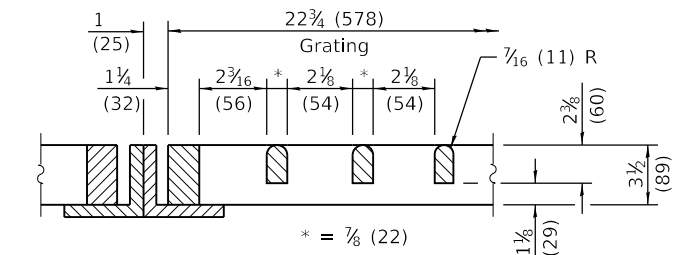
Bar	No.	Size	Length
h	10	No. 4 (No. 13)	20'-0" (6.10 m)
u	17	No. 4 (No. 13)	6'-5" (1.96 m)
u1	6	No. 4 (No. 13)	5'-11" (1.80 m)
u2	1	No. 4 (No. 13)	5'-6" (1.68 m)
v	2	No. 4 (No. 13)	33 (840)
v1	6	No. 4 (No. 13)	30 (760)
v2	10	No. 4 (No. 13)	24 (610)
v3	10	No. 4 (No. 13)	18 (460)
Concrete		cu. yds. (m <sup>3</sup> )	3.2 (2.45)
Reinf. Bars		lbs. (kg)	270 (122)
Grating		(sq. ft.) (m <sup>2</sup> )	56.0 (5.20)



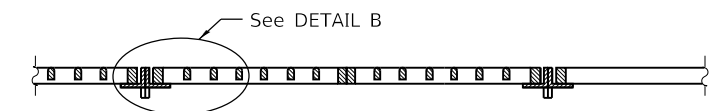
**BARS u, u1 & u2**



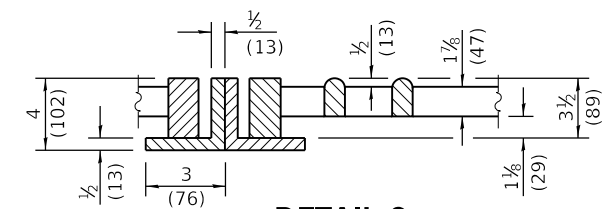
**TYPICAL CAST GRATING**



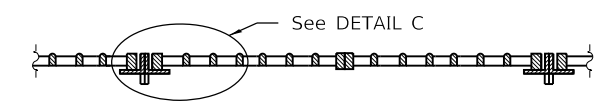
**DETAIL B**



**SECTION C-C**



**DETAIL C**



**SECTION D-D**

Illinois Department of Transportation

PASSED January 1, 2011  
*Michael Beard*  
 ENGINEER OF POLICY AND PROCEDURES

APPROVED January 1, 2011  
*Scott Schick*  
 ENGINEER OF DESIGN AND ENVIRONMENT

ISSUED 1-1-97

**INLET BOX  
TYPE 24 (600) G**

(Sheet 2 of 2)

**STANDARD 542531-04**