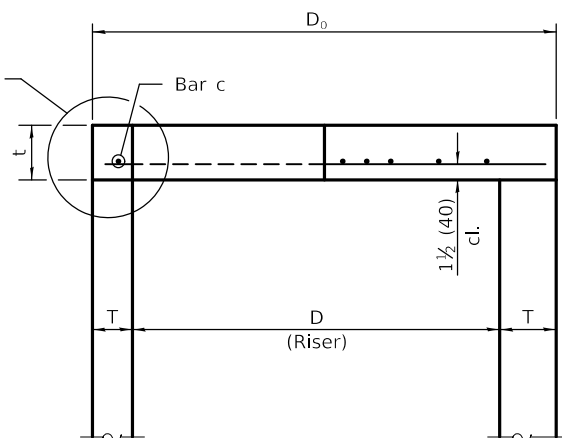


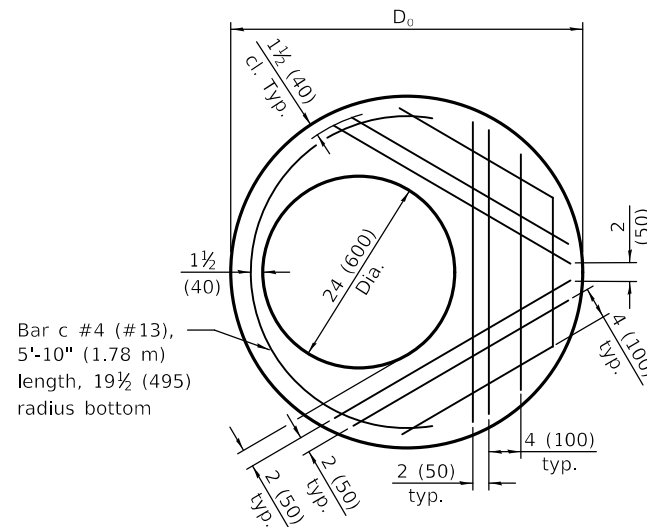
**FLAT SLAB TOP JOINT CONFIGURATIONS  
FOR D = 36 (900) AND D = 4'-0" (1.22 m)**

(Shown at access hole)

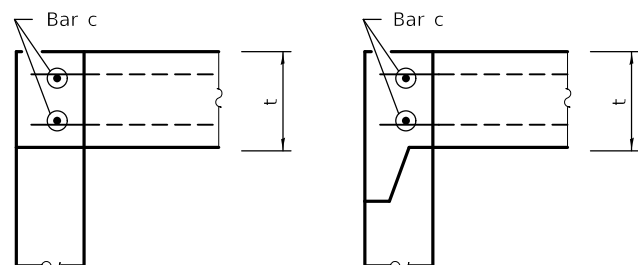
See Top Slab Joint Configurations for D=36 (900) and D=4'-0" (1.22 m)



**SECTION THRU FLAT SLAB TOP  
FOR D = 36 (900) AND D = 4'-0" (1.22 m)**



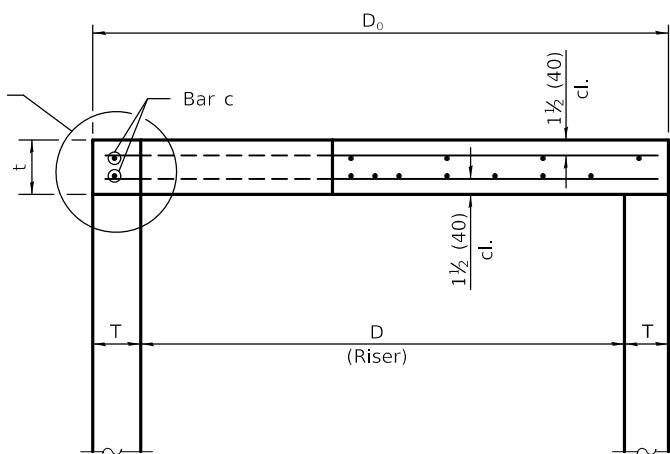
**PLAN - FLAT SLAB TOP FOR D = 36 (900)**  
(Showing layout of reinforcement bars and c bars)



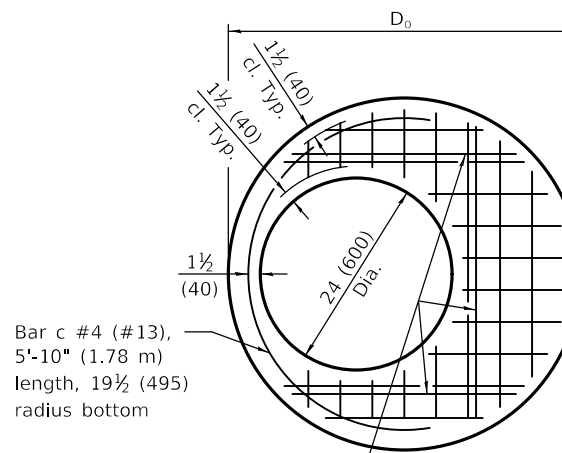
**FLAT SLAB TOP JOINT CONFIGURATIONS  
D = 5'-0" (1.52 m)**

(Shown at access hole)

See Top Slab Joint Configurations for D=5'-0" (1.52 m)



**SECTION THRU FLAT SLAB TOP  
FOR D = 5'-0" (1.52 m)**



Bar c #4 (#13), 5'-10" (1.78 m) length, 19 1/2 (495) radius bottom

#4 (#13) bars bottom. Bundle with closest WWR bar to the opening.

**PLAN - FLAT SLAB TOP FOR D = 36 (900)**  
(Showing layout of welded wire reinforcement and c bars)

**TABLE**

D	T	D <sub>0</sub> (min.)	t
36 (900)	See applicable Standards	D + 2T	6 (150)
4'-0" (1.2 m)			6 (150)
5'-0" (1.5 m)			8 (200)

**GENERAL NOTES**

The flat slab top may be used in lieu of the tapered tops shown on Standards 602001, 602016, or 602306 at the option of the Contractor or when field conditions prohibit the use of tapered tops.

Lifting holes shall be located in the sections as per the manufacturer's recommendations.

All dimensions are in inches (millimeters) unless otherwise shown.

DATE	REVISIONS
1-1-19	Expanded / refined reinforcement options.
1-1-18	Revised for compliance with LRFD.

**PRECAST REINFORCED  
CONCRETE FLAT SLAB TOP**

(Sheet 1 of 2)

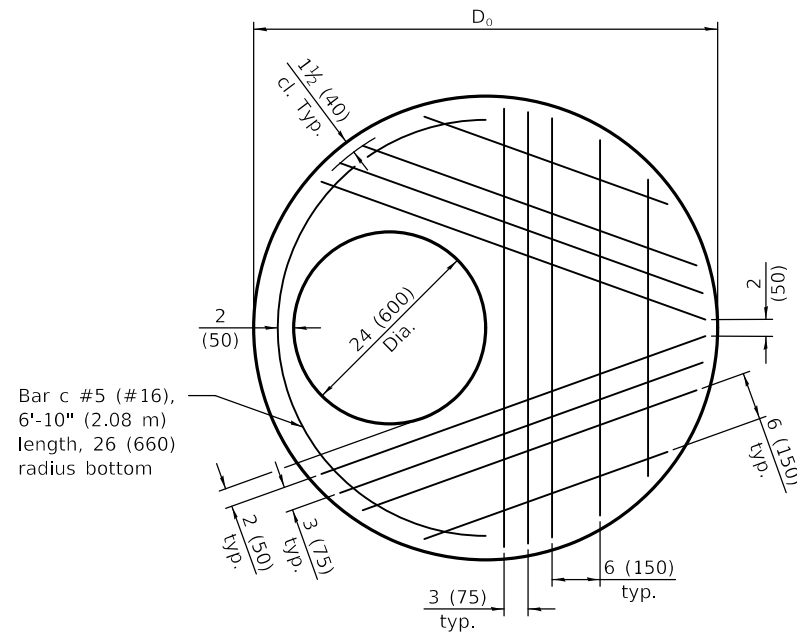
**STANDARD 602601-06**

Illinois Department of Transportation

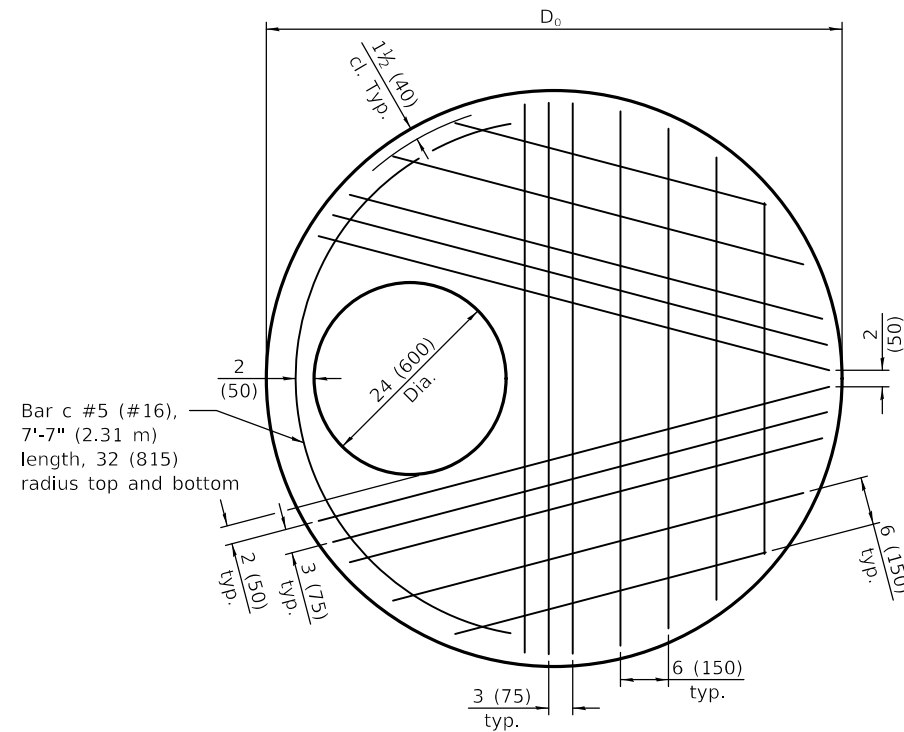
PASSED January 1, 2019  
  
 ENGINEER OF POLICY AND PROCEDURES

APPROVED January 1, 2019  
  
 ENGINEER OF DESIGN AND ENVIRONMENT

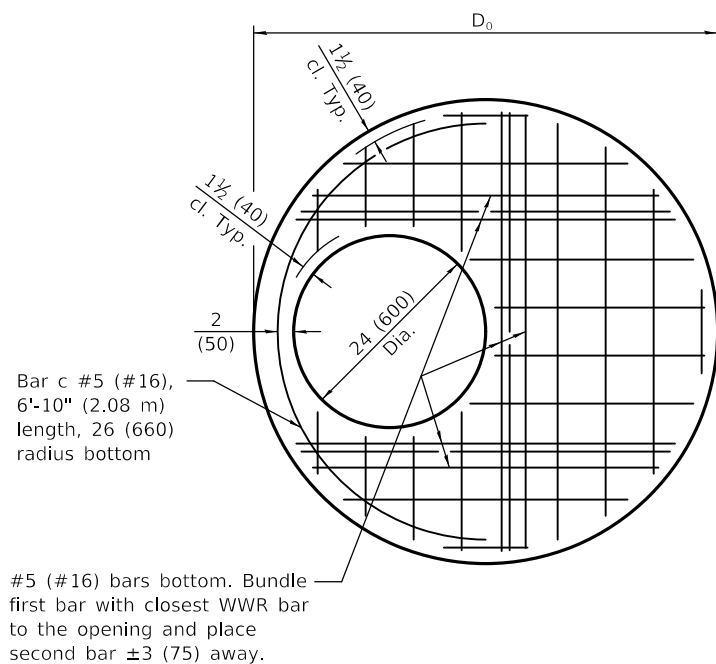
ISSUED 1-1-97



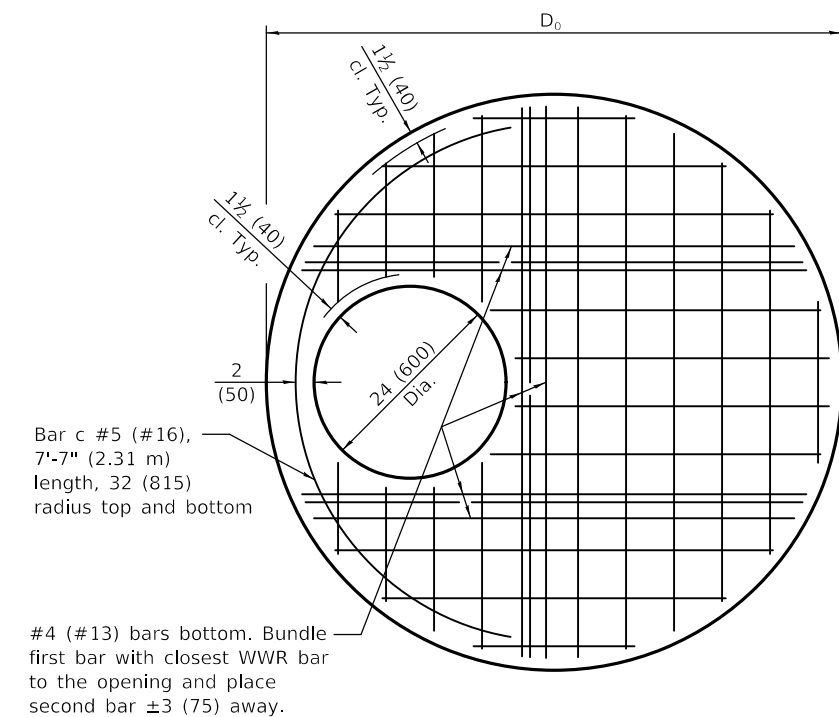
**PLAN - FLAT SLAB TOP FOR D = 4'-0" (1.22 m)**  
(Showing layout of reinforcement bars and c bars)



**PLAN - FLAT SLAB TOP FOR D = 5'-0" (1.52 m)**  
(Showing layout of bottom reinforcement bars and c bars)



**PLAN - FLAT SLAB TOP FOR D = 4'-0" (1.22 m)**  
(Showing layout of welded wire reinforcement and c bars)



**PLAN - FLAT SLAB TOP FOR D = 5'-0" (1.52 m)**  
(Showing layout of welded wire reinforcement and c bars)

**FLAT SLAB TOP REINFORCEMENT FOR D = 36 (900)**

Location	WWR (each direction)		Rebar		
	A <sub>s</sub> (min.)	Spacing (max.)	A <sub>s</sub> (min.)	Spacing (max.)	Bar Size
Bottom Mat	* 0.60 sq. in./ft. (1270 sq. mm/m)	6 (150)	See plan view for rebar orientation and spacing and this table for bar size		#4 (#13)

**FLAT SLAB TOP REINFORCEMENT FOR D = 4'-0" (1.22 m)**

Location	WWR (each direction)		Rebar		
	A <sub>s</sub> (min.)	Spacing (max.)	A <sub>s</sub> (min.)	Spacing (max.)	Bar Size
Bottom Mat	* 0.62 sq. in./ft. (1312 sq. mm/m)	6 (150)	See plan view for rebar orientation and spacing and this table for bar size		#5 (#16)

**FLAT SLAB TOP REINFORCEMENT FOR D = 5'-0" (1.52 m)**

Location	WWR (each direction)		Rebar (each direction except as noted)		
	A <sub>s</sub> (min.)	Spacing (max.)	A <sub>s</sub> (min.)	Spacing (max.)	Bar Size
Top Mat	0.11 sq. in./ft. (233 sq. mm/m)	18 (450)	0.11 sq. in./ft. (233 sq. mm/m)	18 (450)	#3 or #4 (#10) (#13)
Bottom Mat	* 0.40 sq. in./ft. (847 sq. mm/m)	6 (150)	See plan view for rebar orientation and spacing and this table for bar size		#4 (#13)

\* Only one layer of WWR permitted to avoid congestion.

Illinois Department of Transportation

PASSED January 1, 2019  
*Michael Bond*  
ENGINEER OF POLICY AND PROCEDURES

APPROVED January 1, 2019  
*Joe E. ...*  
ENGINEER OF DESIGN AND ENVIRONMENT

ISSUED 1-1-97

**PRECAST REINFORCED  
CONCRETE FLAT SLAB TOP**

(Sheet 2 of 2)

**STANDARD 602601-06**