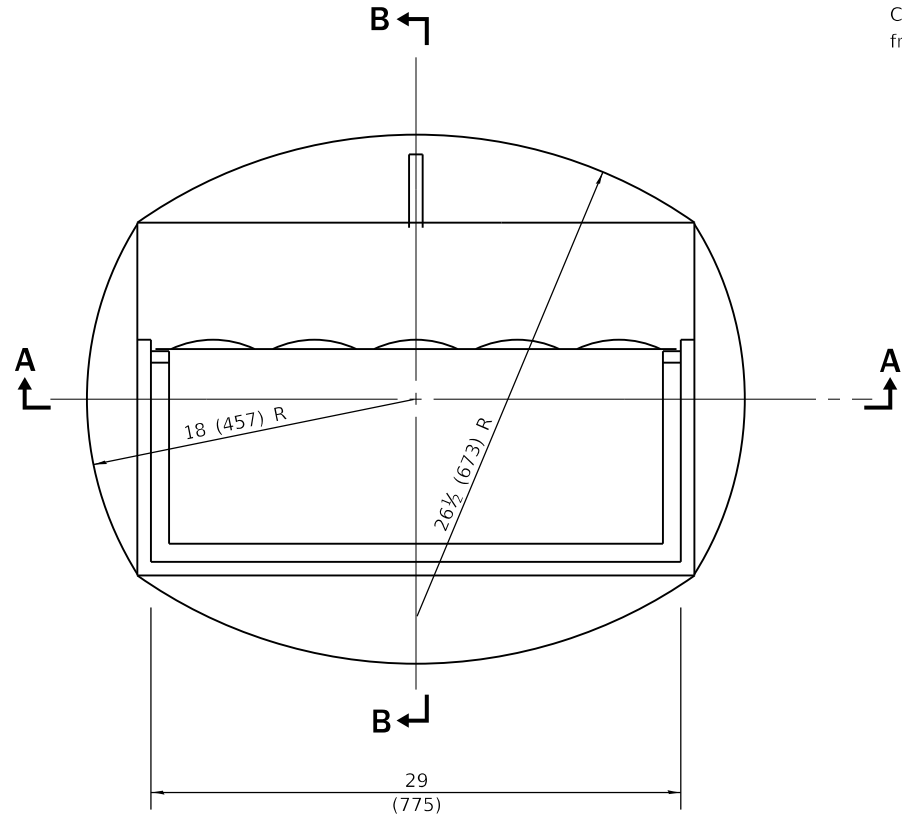
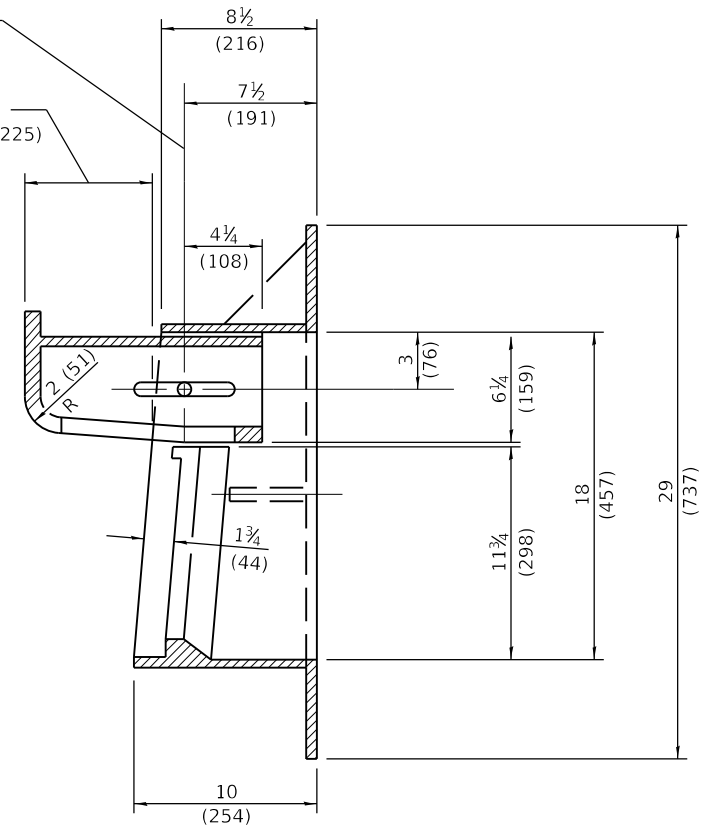


⌀ 5/8 (10) Dia. hole and 5/8x5 1/2 (16x140) slotted hole for galvanized 1/2 (M12) bolt, nut, and washer.

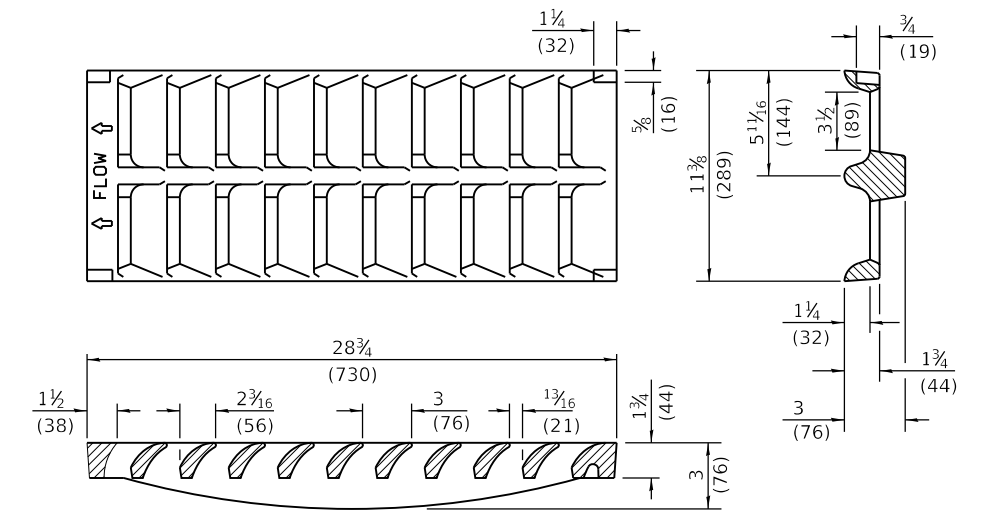
Curb box adjustable from 4 1/2 (115) to 9 (225)



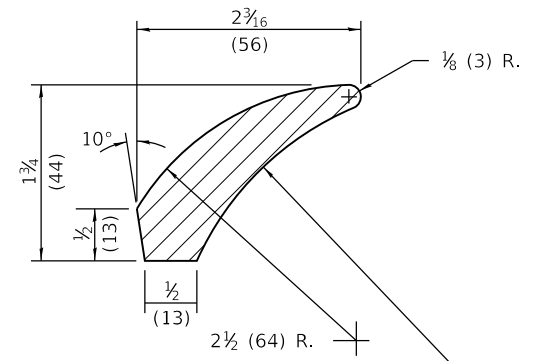
**CAST FRAME**



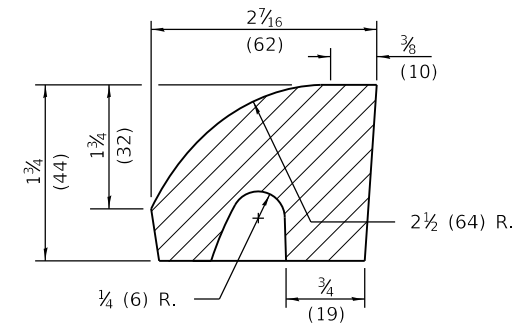
**SECTION B-B**



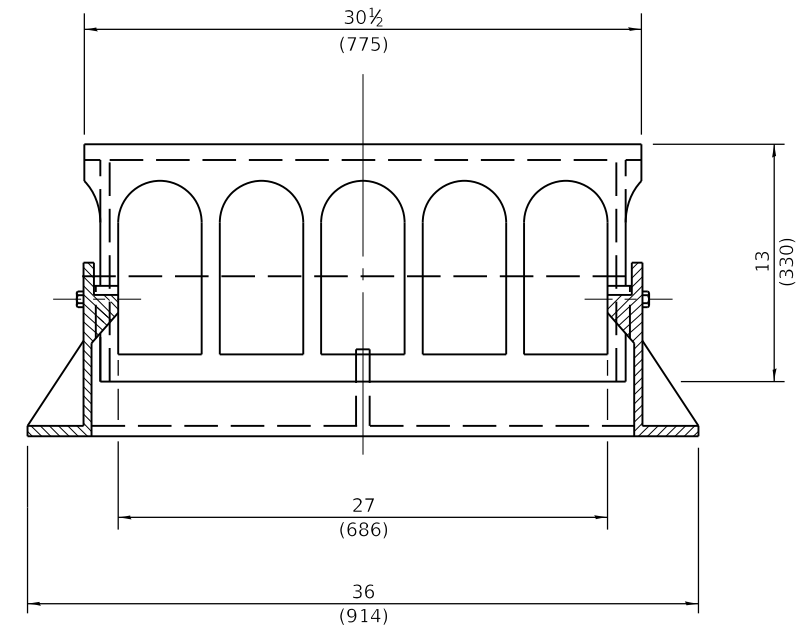
**CAST GRATE**



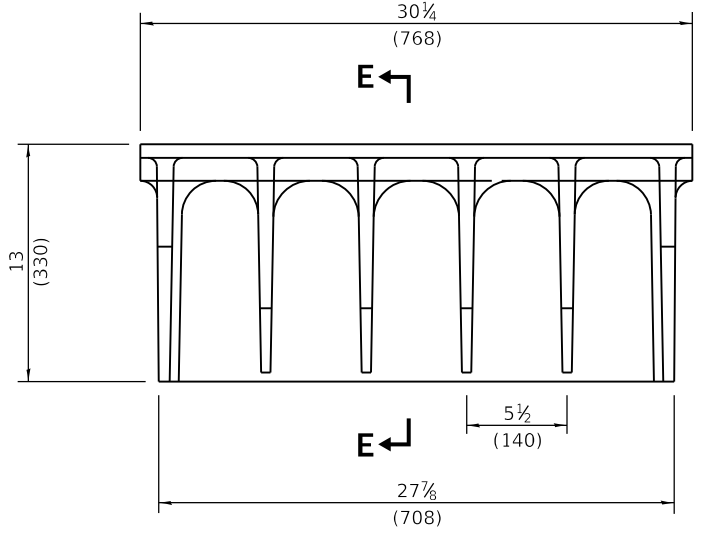
**VANE DETAIL**



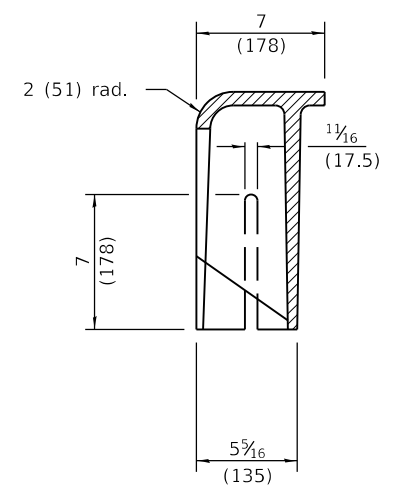
**FRONT VANE DETAIL**



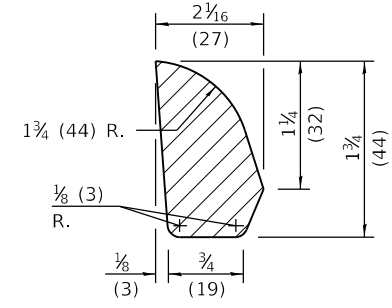
**SECTION A-A**



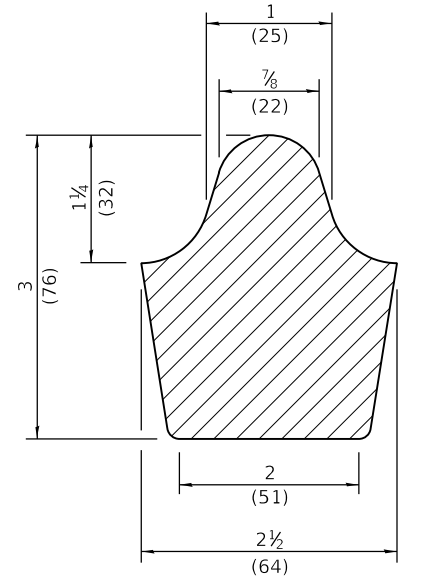
**ALTERNATE CURB BOX**



**SECTION E-E**



**SIDE RIB DETAIL**



**MIDDLE RIB DETAIL**

All dimensions are in inches (millimeters) unless otherwise shown.

Illinois Department of Transportation

PASSED January 1, 2015  
*Michael Beard*  
 ENGINEER OF POLICY AND PROCEDURES

APPROVED January 1, 2015  
*[Signature]*  
 ENGINEER OF DESIGN AND ENVIRONMENT

ISSUED 1-1-97

DATE	REVISIONS
1-1-15	Revised dimensions of frame and alternate curb box.
1-1-09	Switched units to English (metric).

**FRAME AND GRATE  
TYPE 11V**

**STANDARD 604056-04**