

GENERAL NOTES

This standard shows attachment to curb mounted bridge rail. Attachment to side mounted bridge rail is similar.

See Standard 630001 for details of guardrail not shown.

Thrie beam rail shall be bolted to block-out at all posts.

All slope ratios are expressed as units of vertical displacement to units of horizontal displacement (V:H).

All dimensions are in inches (millimeters) unless otherwise shown.

| DATE | REVISIONS |
|--------|---|
| 1-1-17 | Revised length of thrie beam. Revised length of posts. |
| 1-1-13 | Added note to see plans for bridge approach curb details. |

TRAFFIC BARRIER TERMINAL, TYPE 6A

(Sheet 1 of 3)

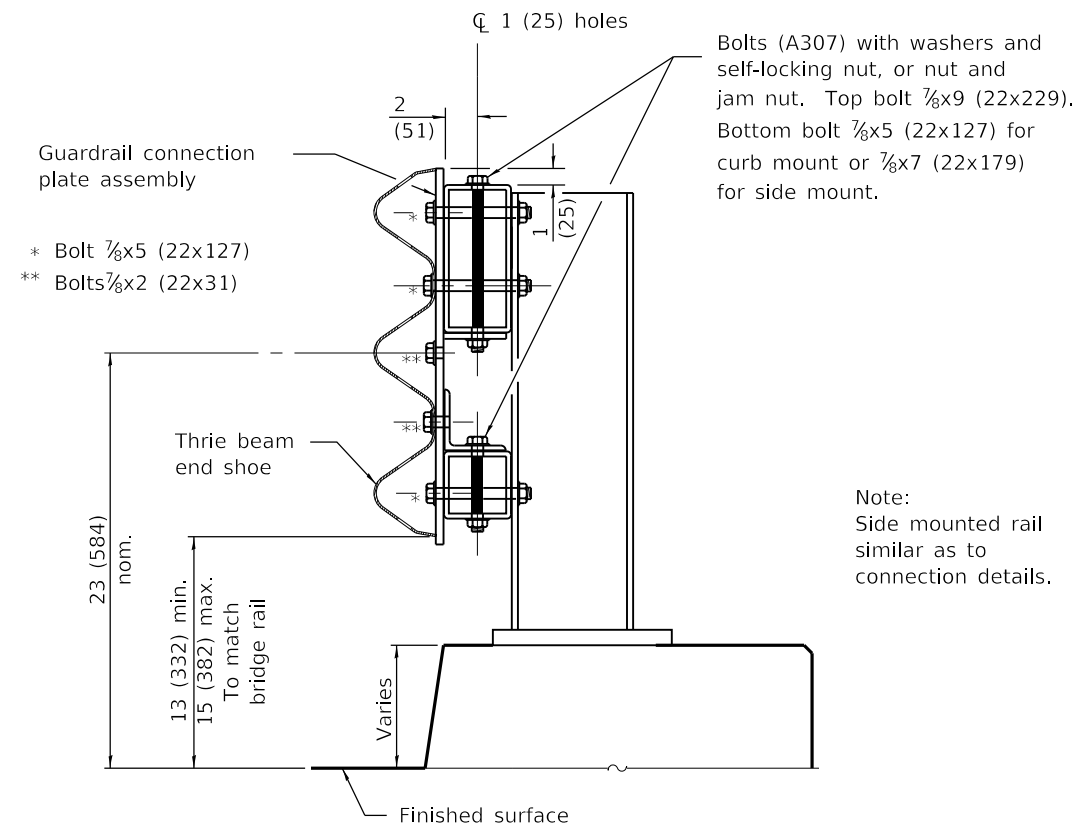
STANDARD 631032-09

Illinois Department of Transportation

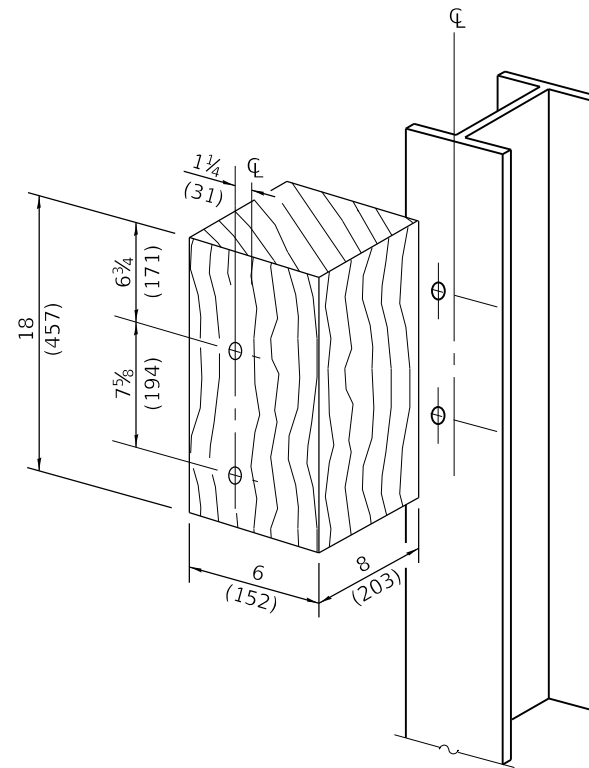
PASSED January 1, 2017
Michael Beard
ENGINEER OF POLICY AND PROCEDURES

APPROVED January 1, 2017
Marcus M. Beck
ENGINEER OF DESIGN AND ENVIRONMENT

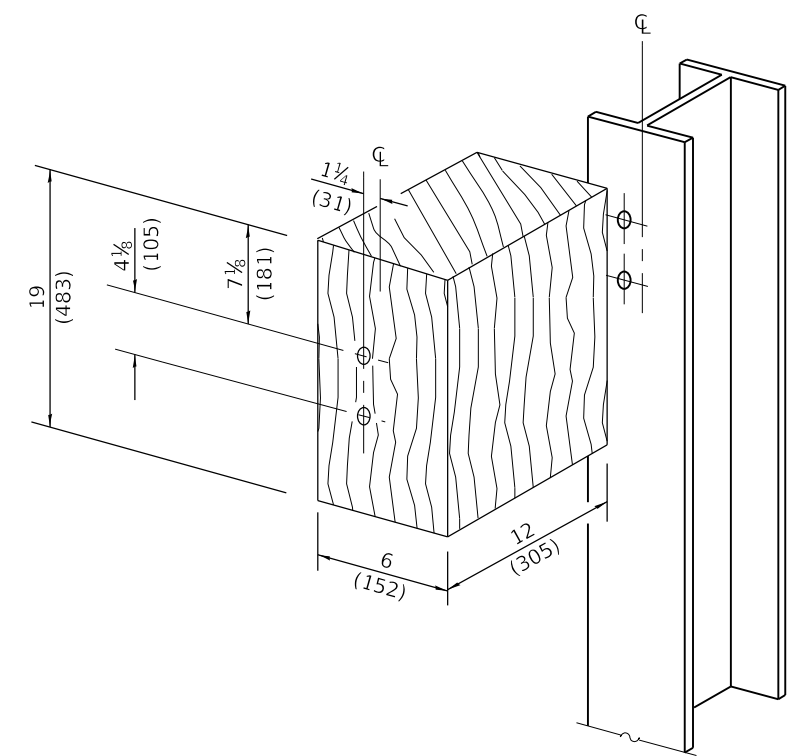
ISSUED 1-1-2003



SECTION C-C

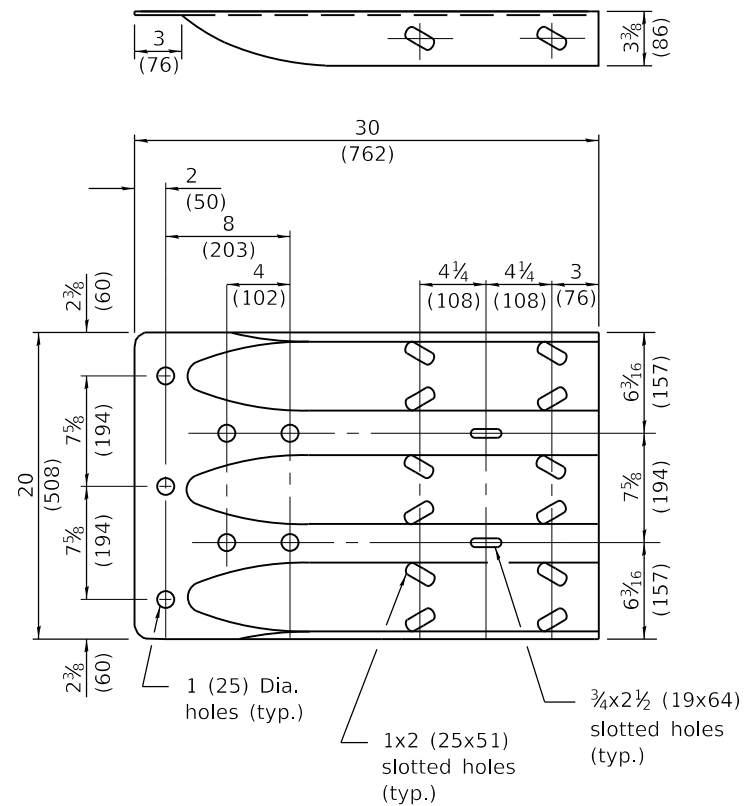


POSTS 1-9 WOOD BLOCKOUT DETAIL

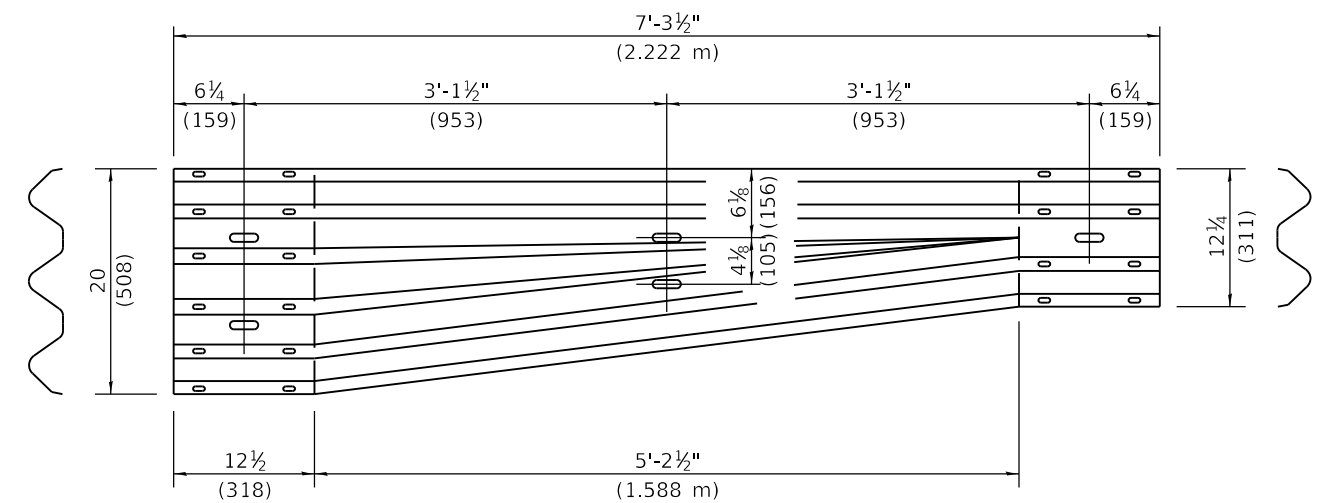


POST 10 WOOD BLOCKOUT DETAIL

(See Standard 630001 for post 11-15 blockouts.)



MODIFIED THRIE BEAM END SHOE DETAIL



TRANSITION SECTION
(10 gauge (3.4) rail element)

Illinois Department of Transportation

PASSED January 1, 2017
Michael Beard
ENGINEER OF POLICY AND PROCEDURES

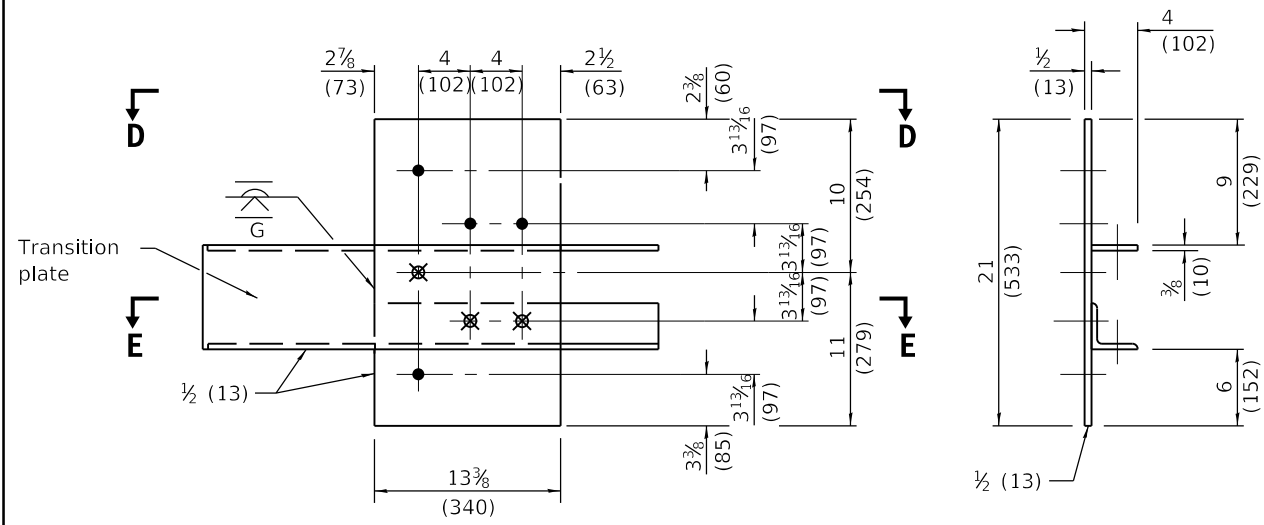
APPROVED January 1, 2017
Maureen M. Beck
ENGINEER OF DESIGN AND ENVIRONMENT

ISSUED 1-1-2003

**TRAFFIC BARRIER
TERMINAL, TYPE 6A**

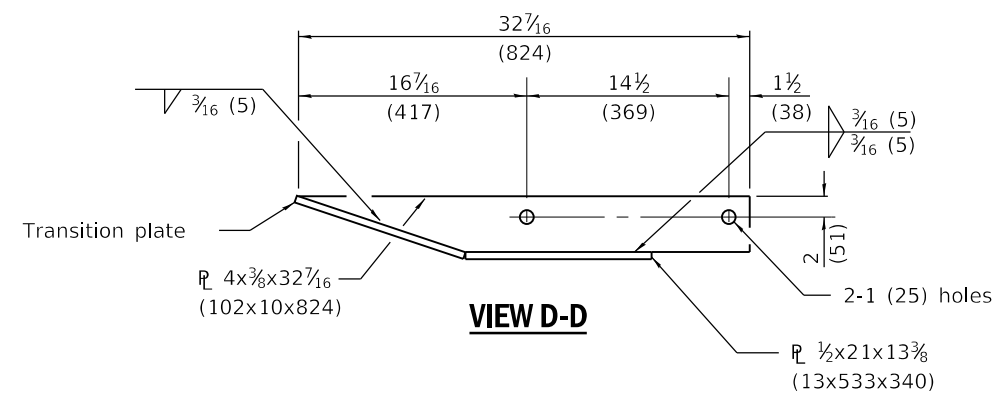
(Sheet 2 of 3)

STANDARD 631032-09

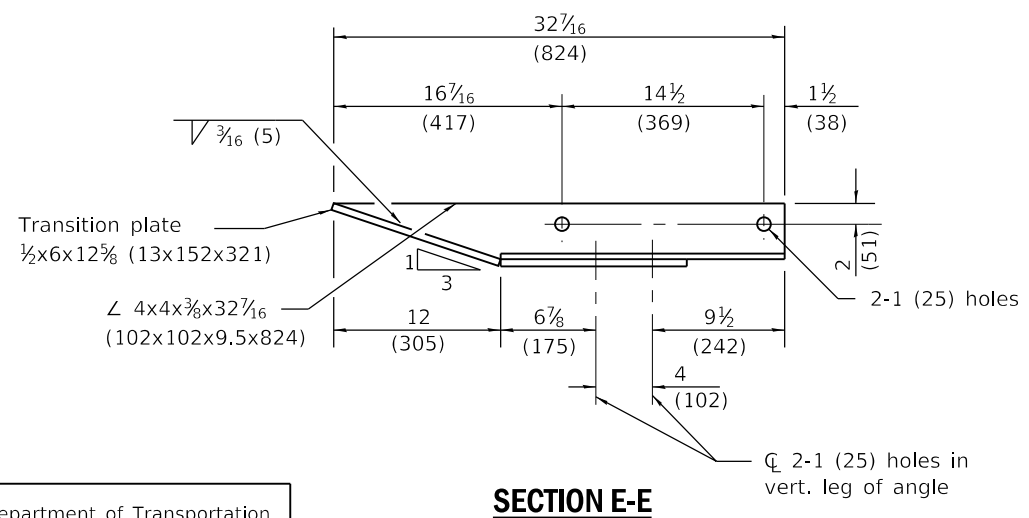


GUARDRAIL CONNECTION PLATE ASSEMBLY DETAILS

(Mirror for opposite end)



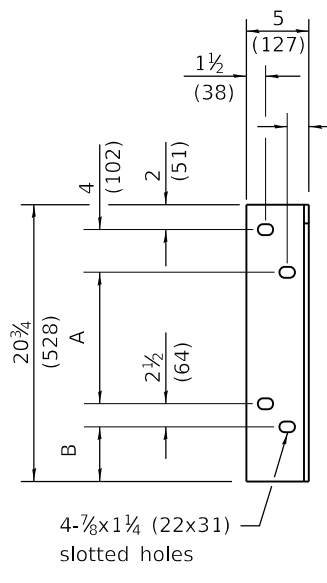
VIEW D-D



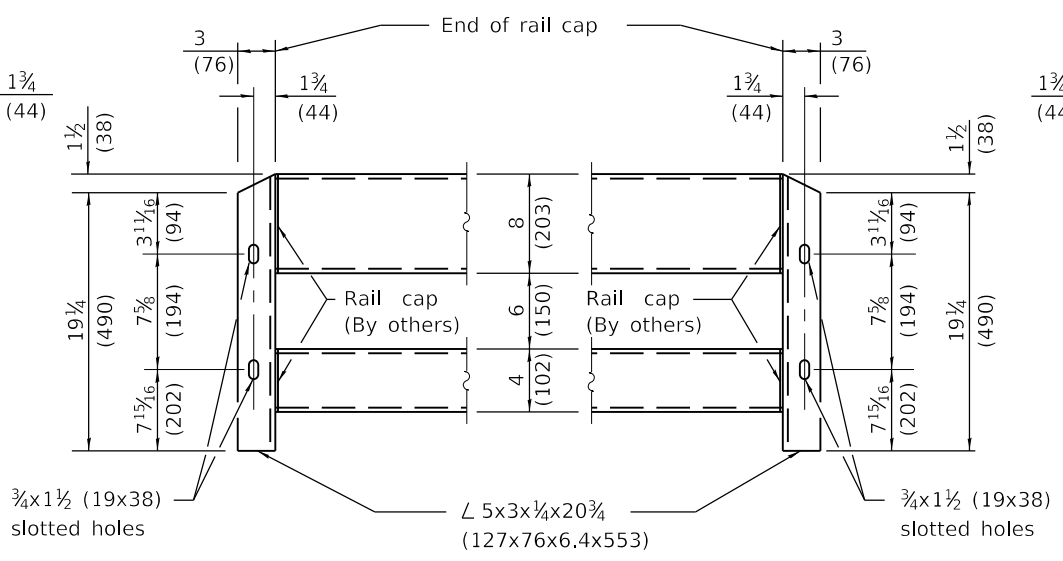
SECTION E-E

- LEGEND**
- ☐ 4-1 (25) holes for $\frac{7}{8}$ (22) H.S. bolts and nuts
 - ⊗ Drill and tap 3 holes for $\frac{7}{8}$ (22) H.S. bolts.

| Dimensions | A | B |
|-----------------------|----------------------|---------------------|
| For Curb Mounted Rail | $8\frac{3}{4}$ (222) | $3\frac{1}{2}$ (89) |
| For Side Mounted Rail | $9\frac{3}{4}$ (247) | $2\frac{1}{2}$ (64) |

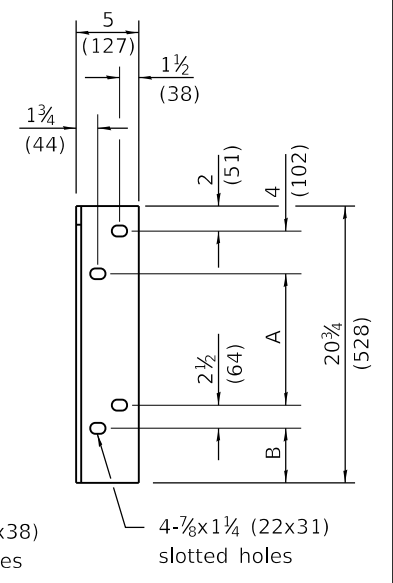


DEPARTURE END VIEW



CONNECTION ANGLES

(Install angles to rail caps using $\frac{3}{8}$ (19) washers and self-locking nuts or nuts and jam nuts, to be provided by others)



APPROACH END VIEW

Illinois Department of Transportation

PASSED January 1, 2017
Michael Beard
 ENGINEER OF POLICY AND PROCEDURES

APPROVED January 1, 2017
Maureen M. Beck
 ENGINEER OF DESIGN AND ENVIRONMENT

ISSUED 1-1-2003

**TRAFFIC BARRIER
 TERMINAL, TYPE 6A**

(Sheet 3 of 3)

STANDARD 631032-09