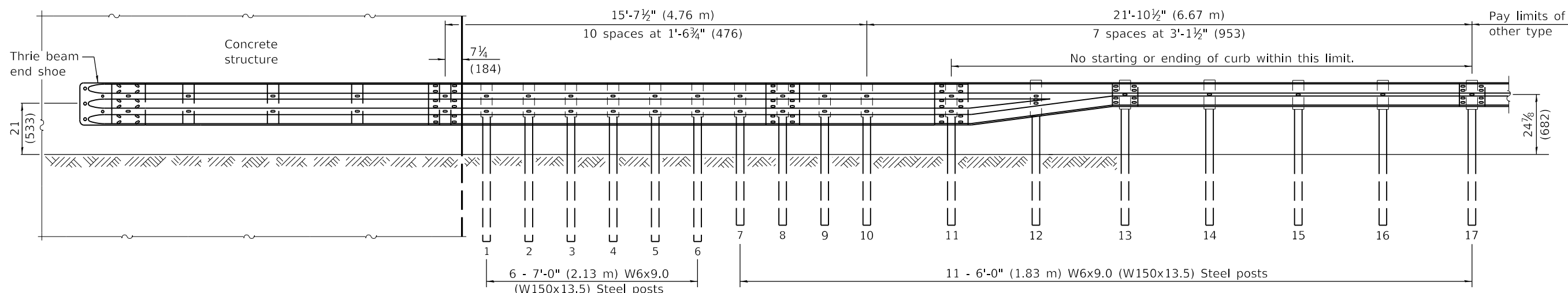
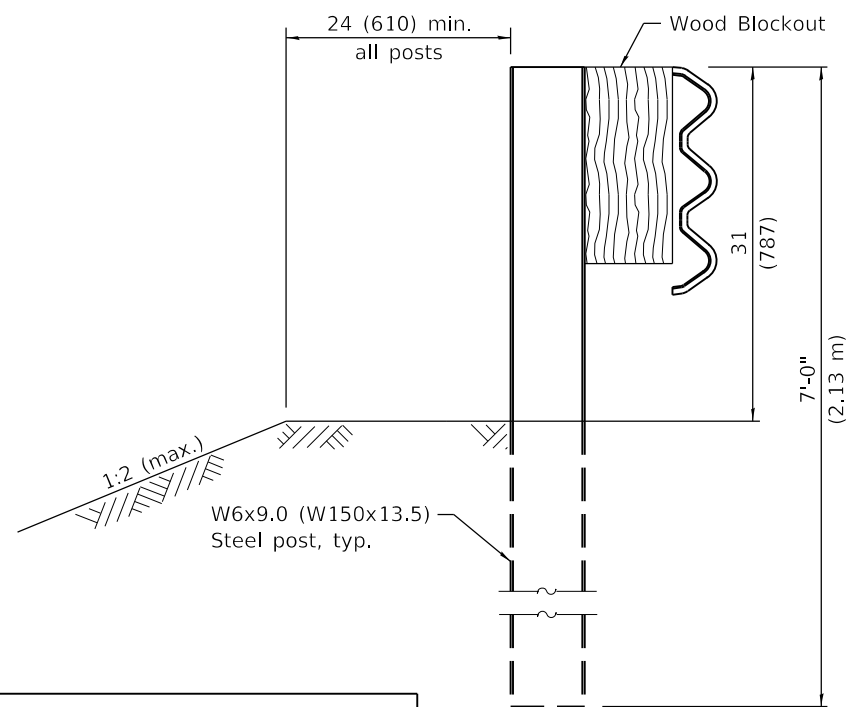


* With standard washers. After tightening, cut the anchor bolts flush with the nuts and damage the nuts to prevent them from loosening.

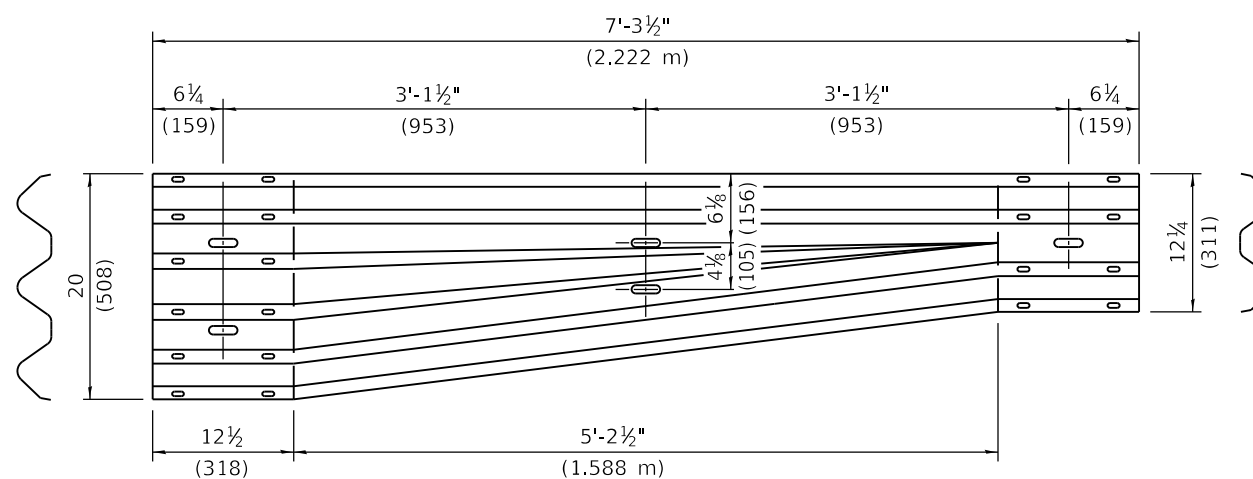
PLAN



ELEVATION



SECTION A-A



TRANSITION SECTION
(10 gauge (3.4) rail element)

GENERAL NOTES

- See Standard 630001 for details of guardrail not shown.
- Thrie beam rail shall be bolted to block-out at all posts.
- All slope ratios are expressed as units of vertical displacement to units of horizontal displacement (V:H).
- All dimensions are in inches (millimeters) unless otherwise shown.

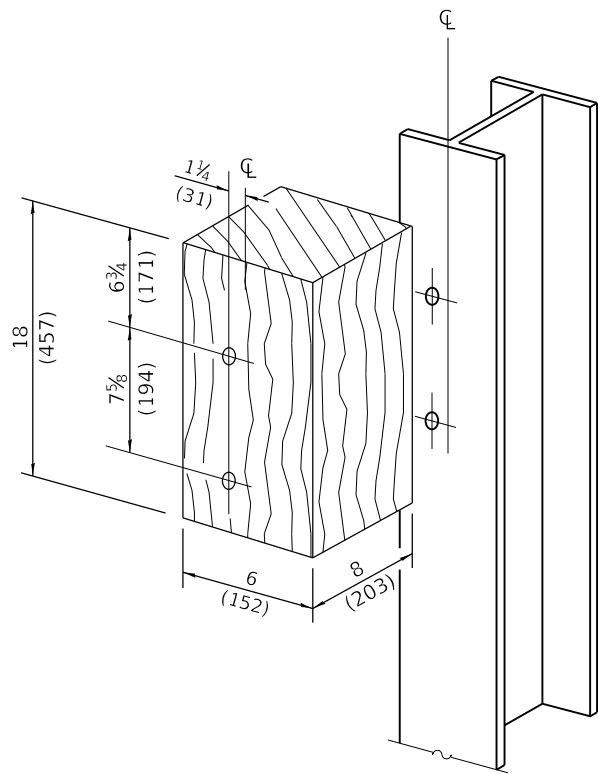
DATE	REVISIONS
1-1-20	Added two posts and revised length of posts.
1-1-17	Revised length of thrie beam and posts.

TRAFFIC BARRIER TERMINAL, TYPE 6B

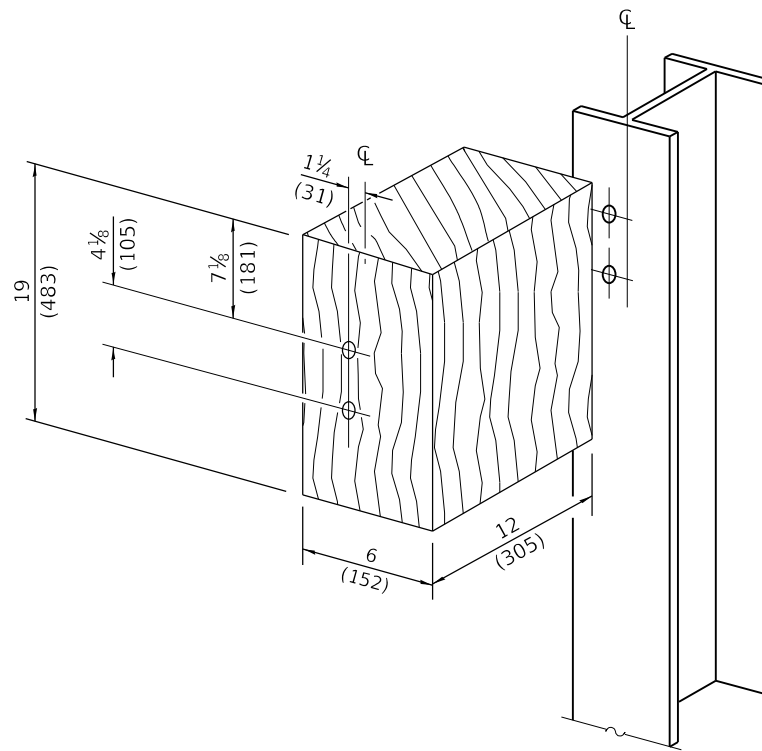
(Sheet 1 of 2)

STANDARD 631033-08

Illinois Department of Transportation
 PASSED January 1, 2020
 Michael Bond
 ENGINEER OF POLICY AND PROCEDURES
 APPROVED January 1, 2020
 J. C. Egan
 ENGINEER OF DESIGN AND ENVIRONMENT
 ISSUED 1-1-2003

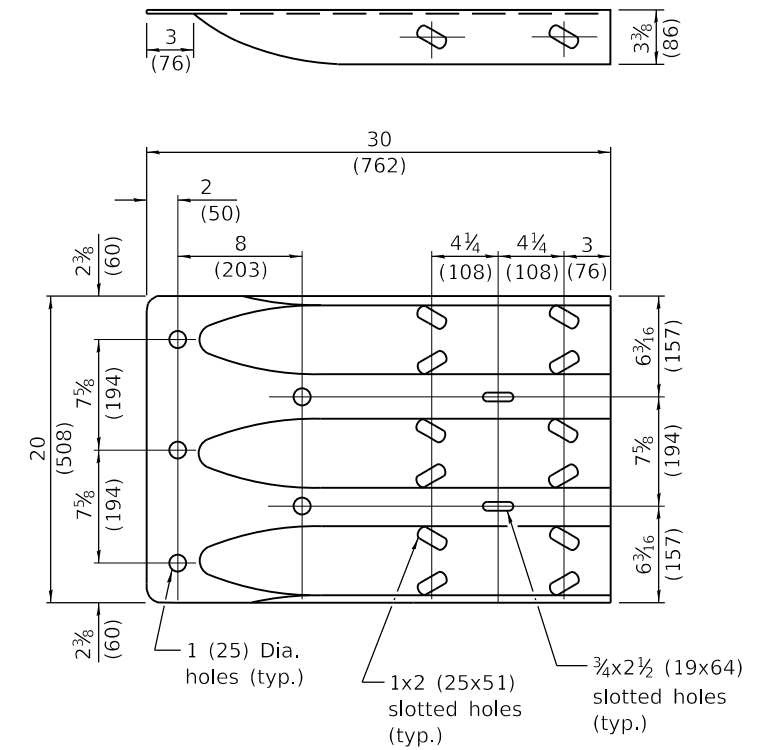


POSTS 1-11 WOOD BLOCKOUT DETAIL

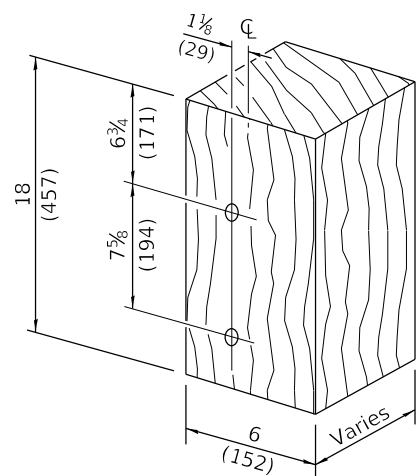


POST 12 WOOD BLOCKOUT DETAIL

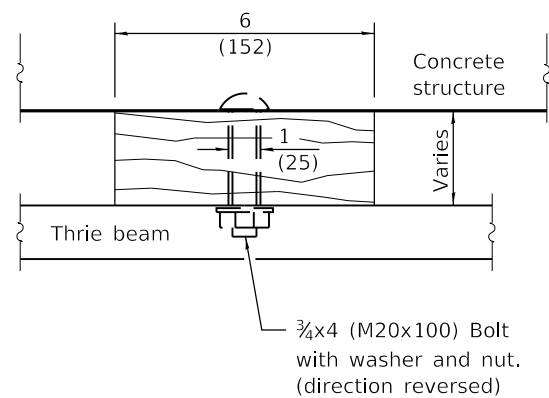
(See Standard 630001 for post 13-17 blockouts.)



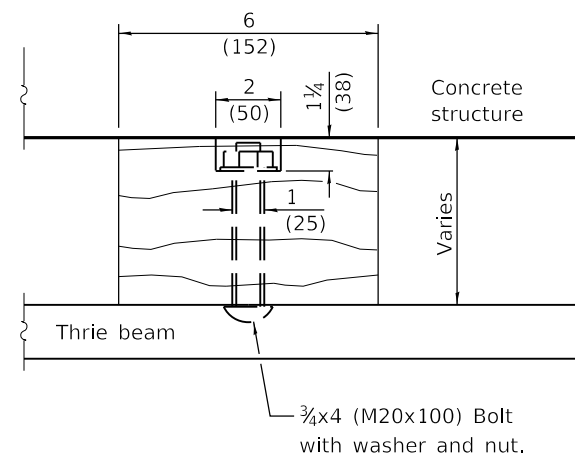
THRIE BEAM END SHOE DETAIL



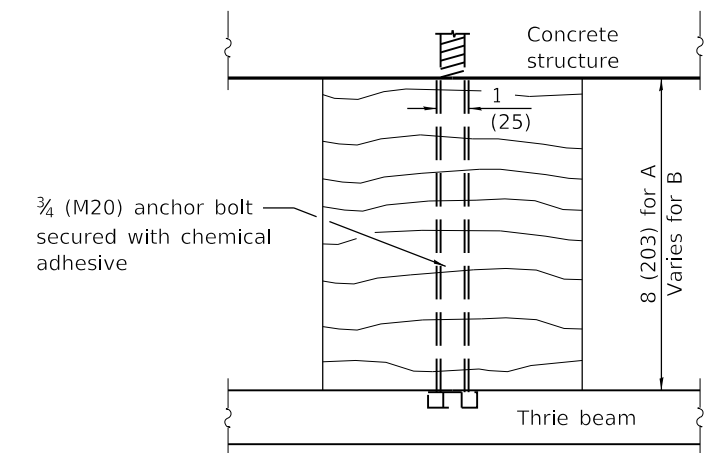
**MODIFIED THICKNESS DETAIL
WOOD BLOCKOUTS A, B, C, & D**



WOOD BLOCKOUT D



WOOD BLOCKOUT C



WOOD BLOCKOUT A & B