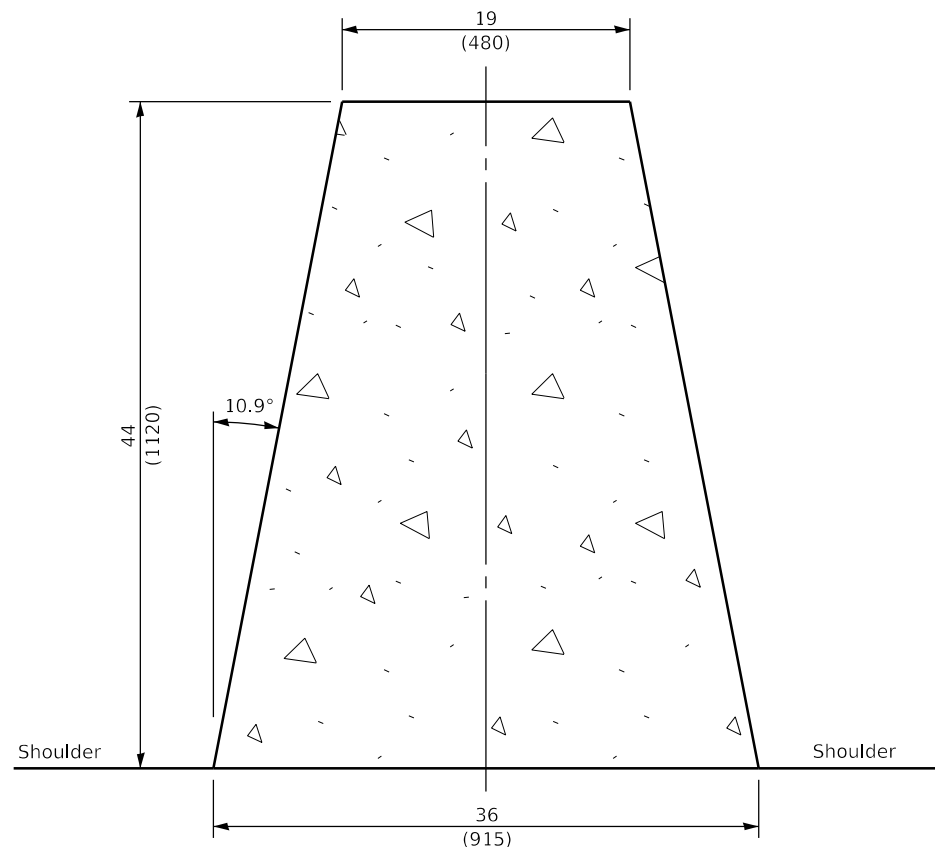
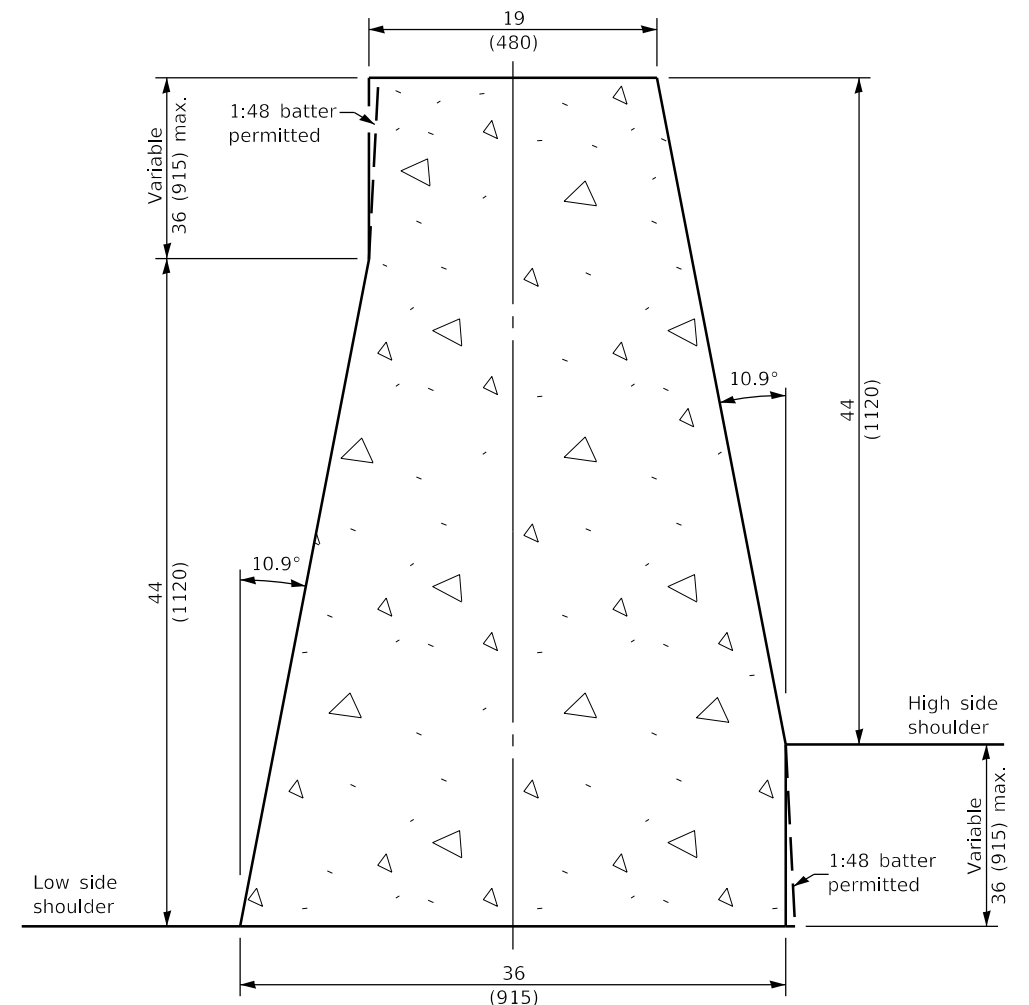


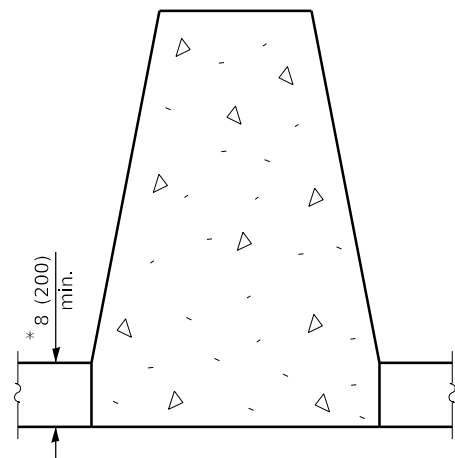
NEW PCC BASE w/ KEYWAY



TYPICAL CROSS-SECTION

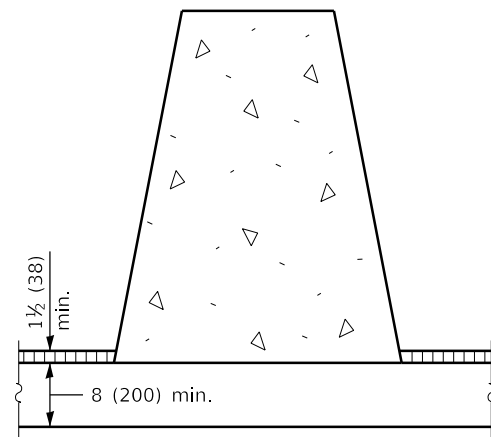


VARIABLE CROSS-SECTION

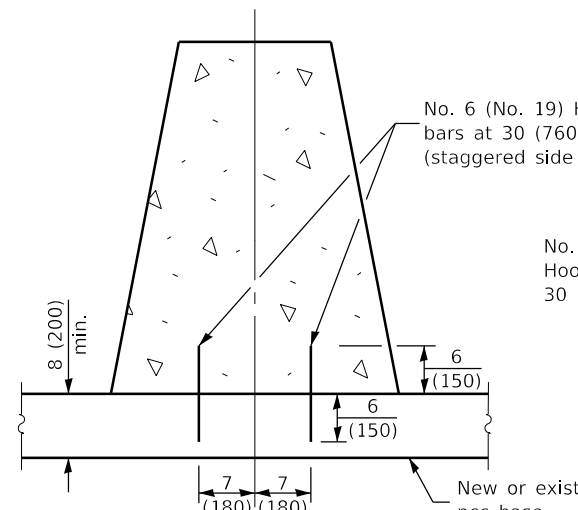


NEW MONOLITHIC PCC BASE

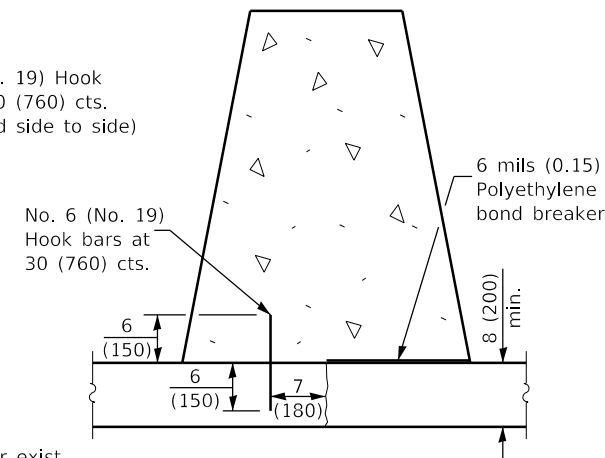
* This dimension shall be 10 (250) min. when the barrier is confined by earth.



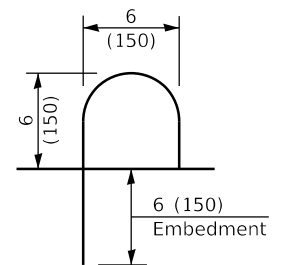
NEW OR EXISTING HMA / PCC BASE w/ HMA OVERLAY CONFINEMENT



NEW OR EXISTING PCC BASE w/ HOOK BARS



EXISTING PCC BASE WITH LONGITUDINAL JOINT



HOOK BAR DETAIL (Side View)

GENERAL NOTES

The Variable Cross-Section shall be used when there is a difference in base elevation between the two sides of the barrier.

See standard 836011 for additional light pole foundation details where required in concrete barrier.

All dimensions are in inches (millimeters) unless otherwise shown.

FIVE ANCHORING METHODS

DATE	REVISIONS
1-1-21	Revised Typical and Variable Cross-Sections. Added keyway anchor method and hook bars.
1-1-19	Revised from F-shape to constant slope, increased height, and renamed standard.

**CONCRETE BARRIER,
DOUBLE FACE,
44 in. (1120 mm) HEIGHT**
(Sheet 1 of 2)

STANDARD 637006-05

Illinois Department of Transportation

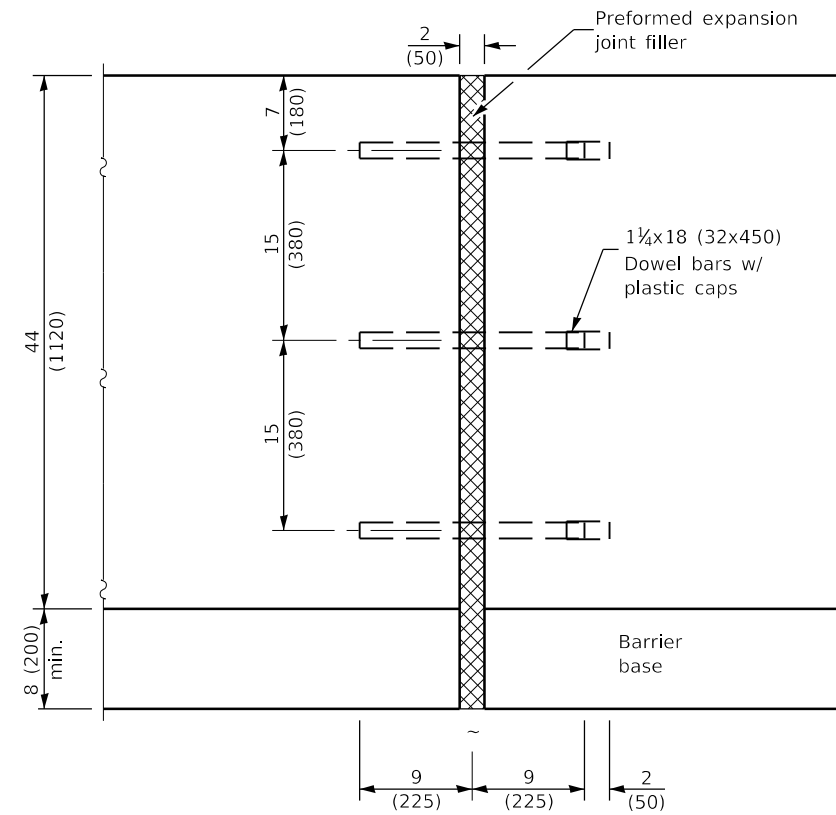
PASSED January 1, 2021

 ENGINEER OF POLICY AND PROCEDURES

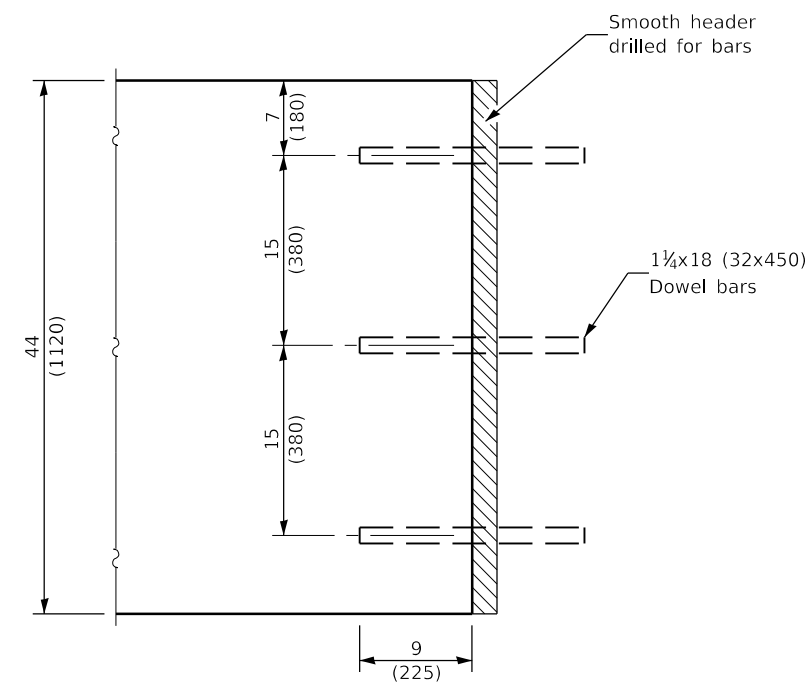
APPROVED January 1, 2021

 ENGINEER OF DESIGN AND ENVIRONMENT

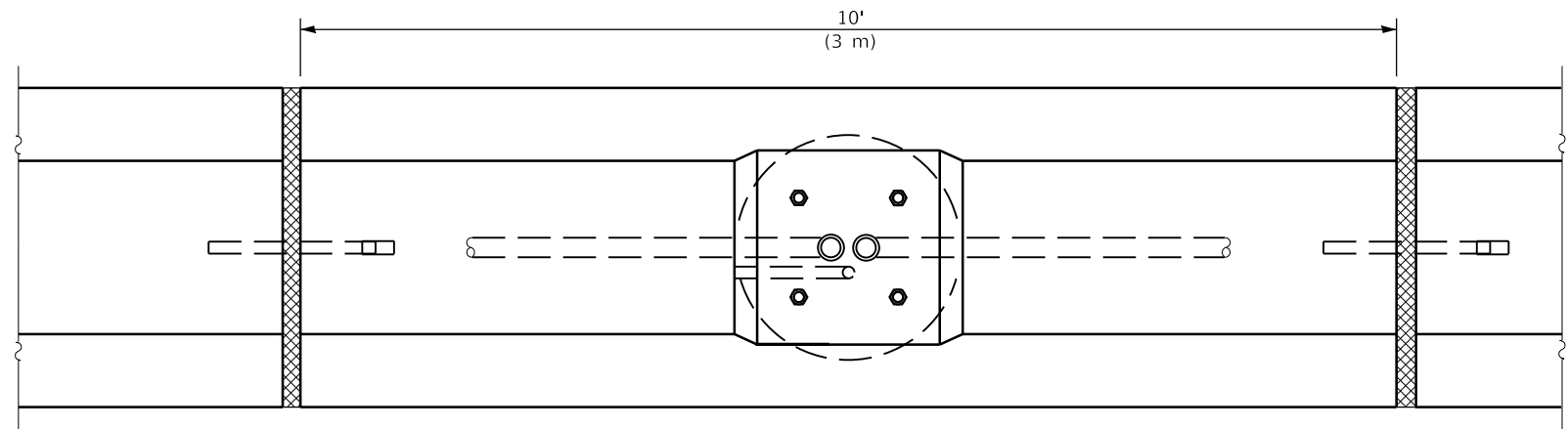
ISSUED 1-1-97
 76-T



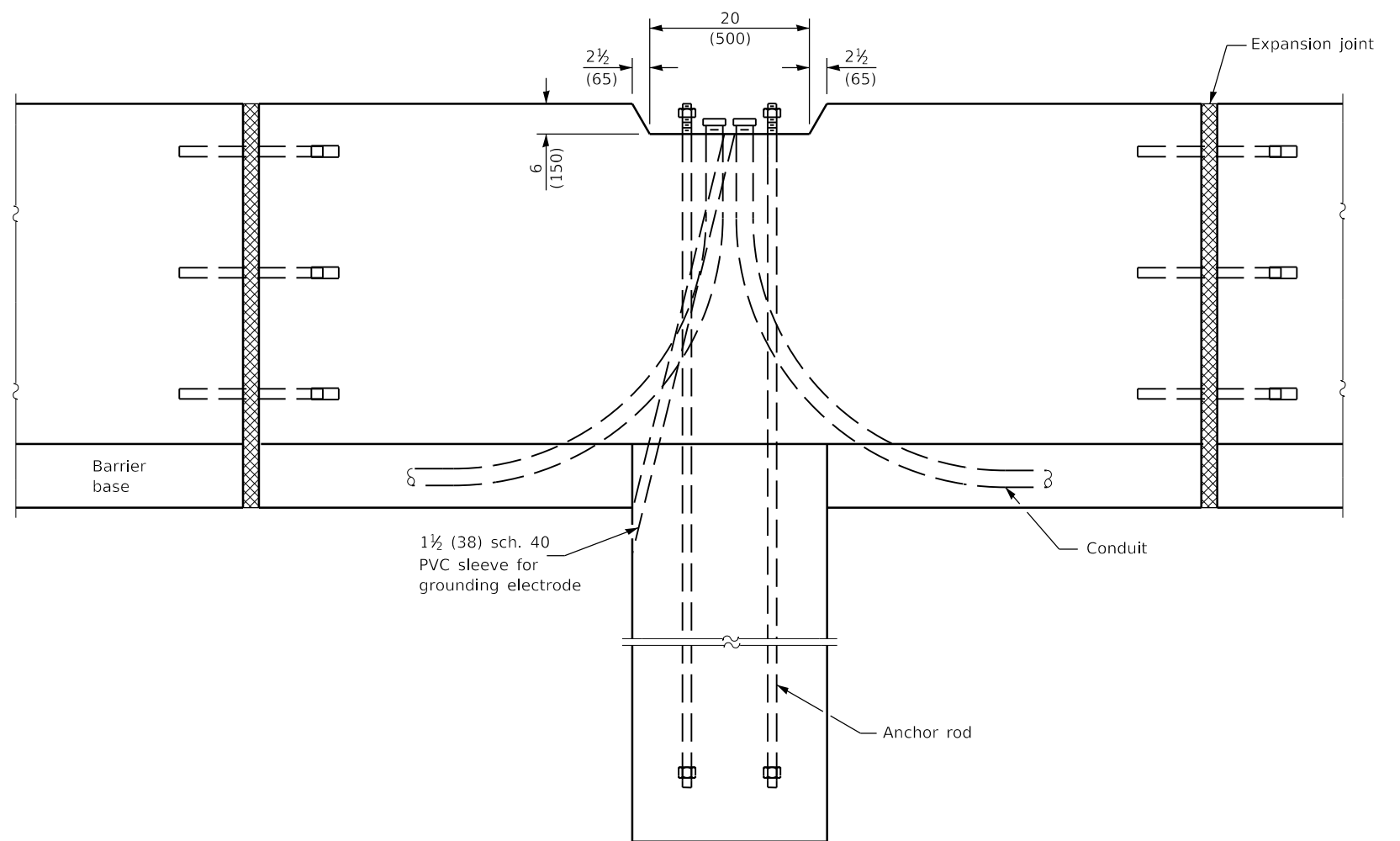
EXPANSION JOINT



CONSTRUCTION JOINT



PLAN AT LIGHTING FOUNDATION



ELEVATION AT LIGHTING FOUNDATION

Illinois Department of Transportation
 PASSED January 1, 2021
 Michael Bond
 ENGINEER OF POLICY AND PROCEDURES
 APPROVED January 1, 2021
 [Signature]
 ENGINEER OF DESIGN AND ENVIRONMENT
 46-1-1 Q3US51

**CONCRETE BARRIER,
 DOUBLE FACE,
 44 in. (1120 mm) HEIGHT**
 (Sheet 2 of 2)

STANDARD 637006-05