

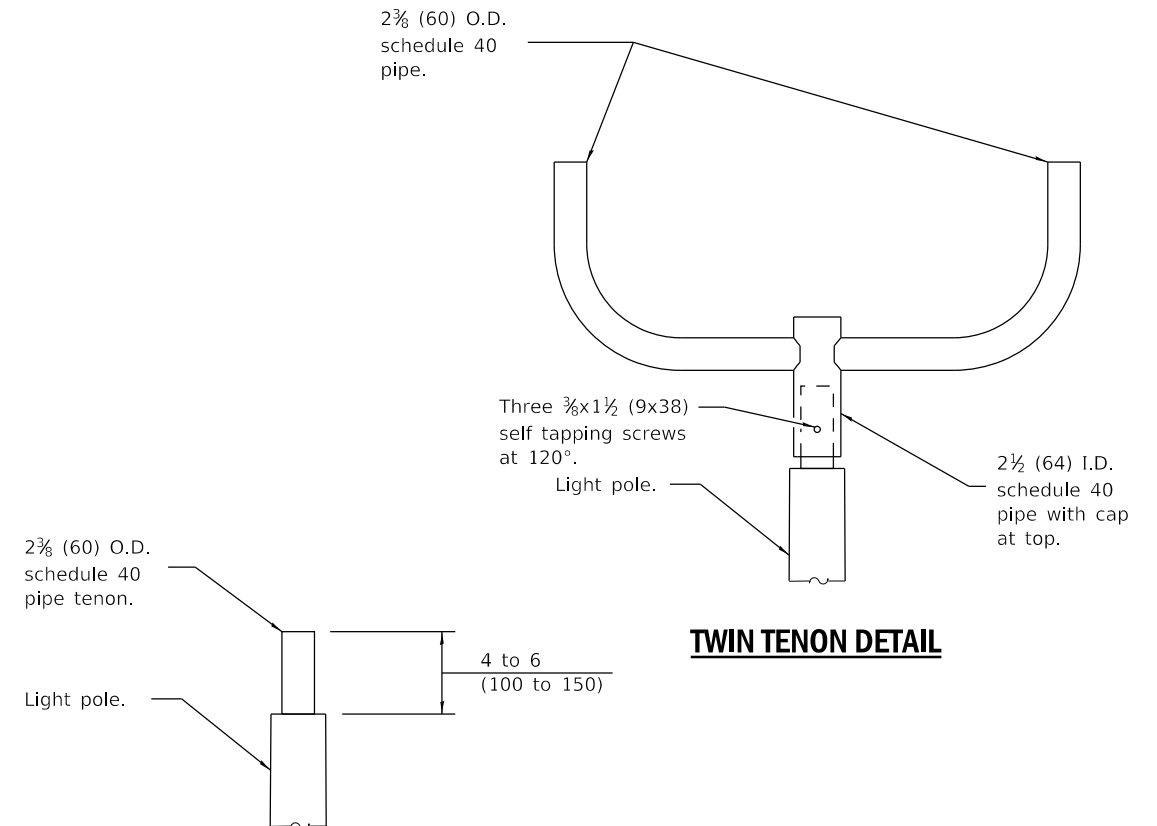
TENON TOP LIGHT POLE

(Single or twin mount)

* Unless directed otherwise by the Engineer.

BASE PLATE		
MOUNTING HEIGHT	BOLT CIRCLE DIAMETER	BASE PLATE THICKNESS
35' (10.7 m) or less	11½ (290)	1 (25)
Greater than 35' (10.7 m) to 50' (15.2 m)	15 (380)	1¼ (32)

LIGHT POLE		
MOUNTING HEIGHT	MINIMUM SHAFT DIAMETER	MINIMUM WALL THICKNESS
35' (10.7 m) or less	8 tapered to 4 (200 to 100)	10 guage
Greater than 35' (10.7 m) to 50' (15.2 m)	10 tapered to 4 (250 to 100)	7 guage



TENON DETAIL

TWIN TENON DETAIL

GENERAL NOTES

See Standard 836001 for Light Pole Foundation and grounding electrode.

See Standard 720001 for pole identification banding to pole.

Provide breakaway devices where required.

Where anchor rods on existing bridge parapets are too short to mount poles as shown, install leveling plate directly on concrete and level with stainless steel washers.

All dimensions are in inches (millimeters) unless otherwise shown.

DATE	REVISIONS
1-1-19	Revised BASE PLATE and LIGHT POLE tables.
1-1-14	Added pole mounted on bridge parapet. Modified attachment of screen.

LIGHT POLE STEEL TENON TOP

(Sheet 1 of 2)

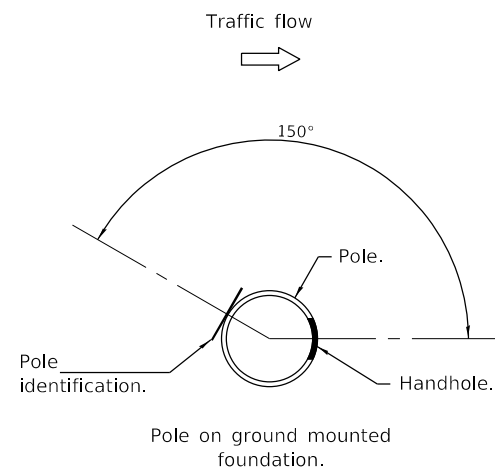
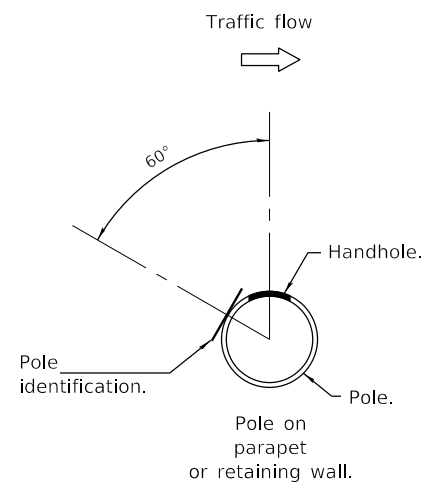
STANDARD 830021-03

Illinois Department of Transportation

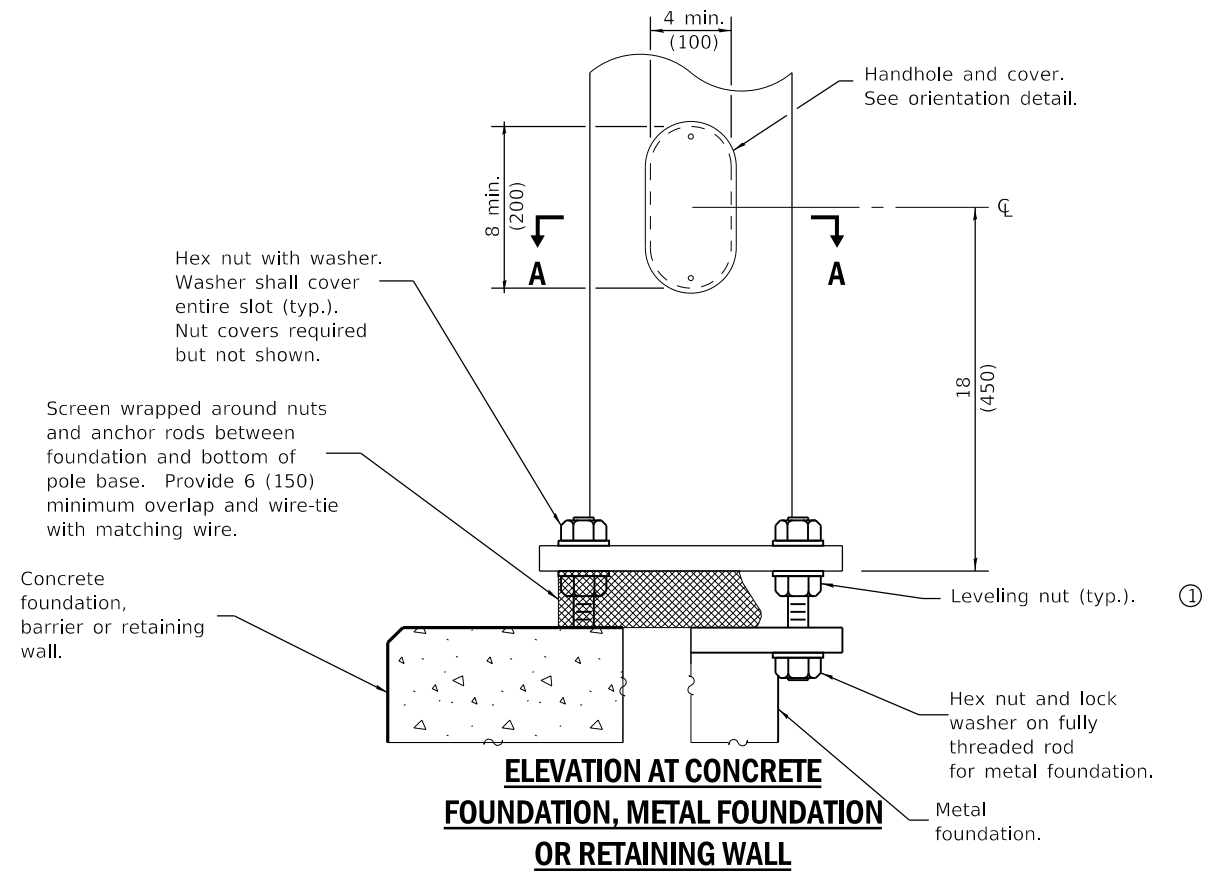
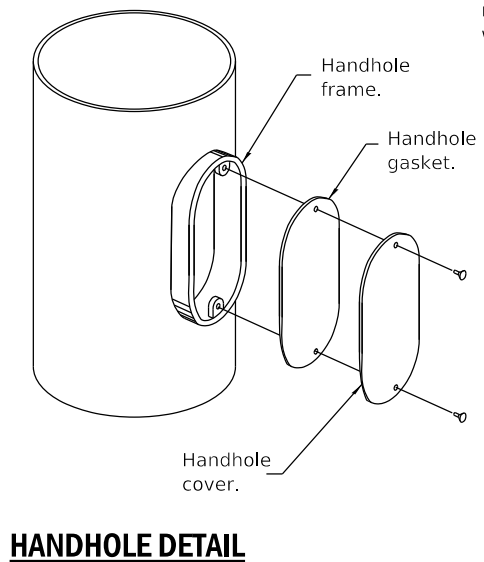
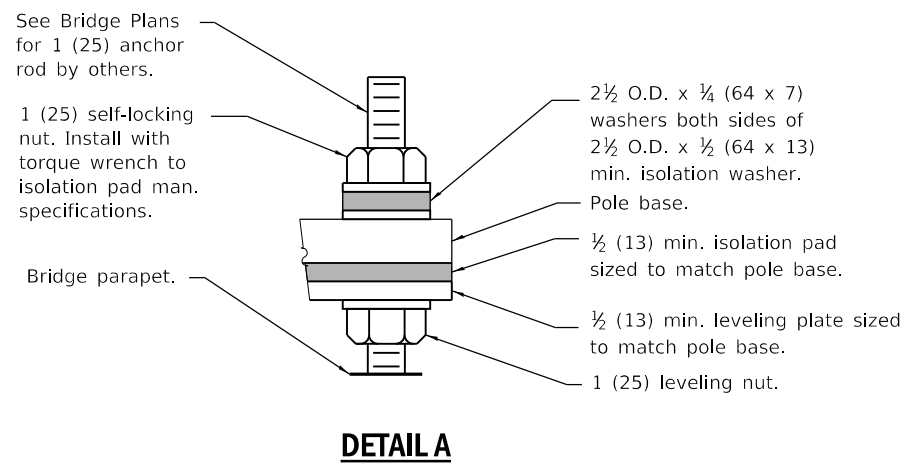
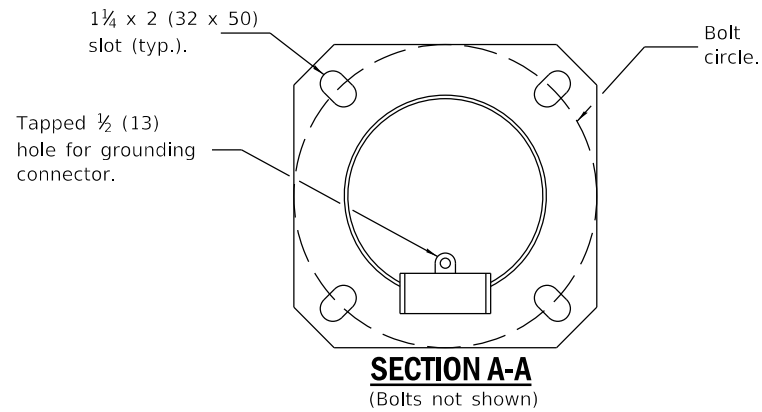
PASSED January 1, 2019
M. E. Reppelt
 ELECTRICAL AND MECHANICAL UNIT CHIEF

APPROVED January 1, 2019
J. E. ...
 ENGINEER OF DESIGN AND ENVIRONMENT

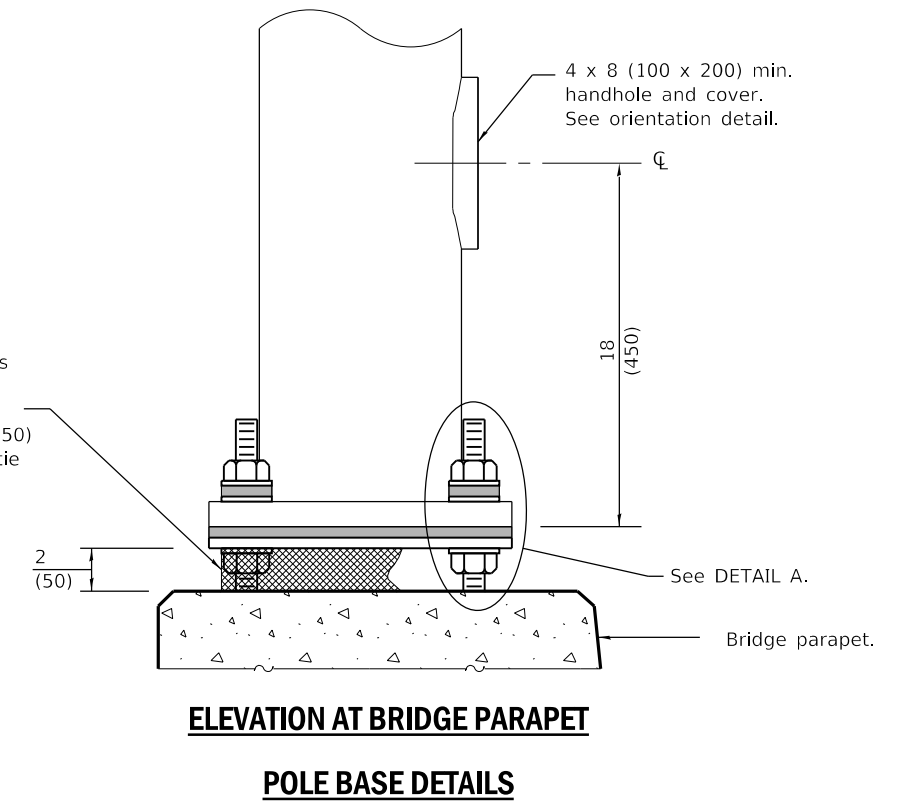
ISSUED 1-1-12



HANDHOLE / IDENTIFICATION ORIENTATION DETAIL



① Omit leveling nuts when breakaway devices are required.



Illinois Department of Transportation

PASSED January 1, 2019

M. E. Reppelt
ELECTRICAL AND MECHANICAL UNIT CHIEF

APPROVED January 1, 2019

J. E. ...
ENGINEER OF DESIGN AND ENVIRONMENT

ISSUED 1-1-12

LIGHT POLE STEEL TENON TOP

(Sheet 2 of 2)

STANDARD 830021-03