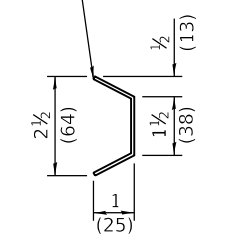
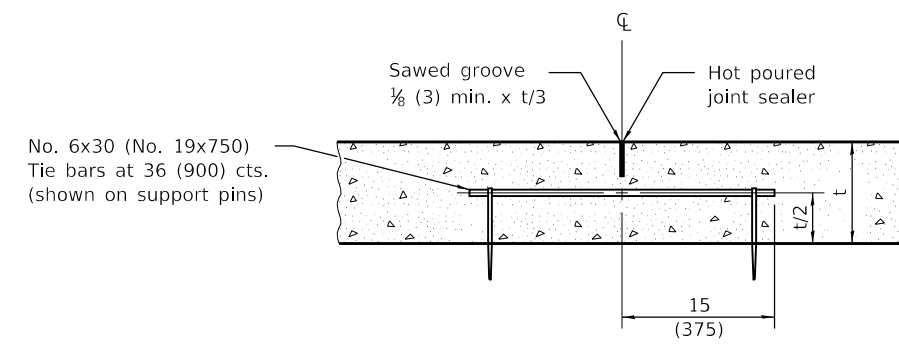


Sheet steel of suitable thickness to form keyway as detailed or approved equal.

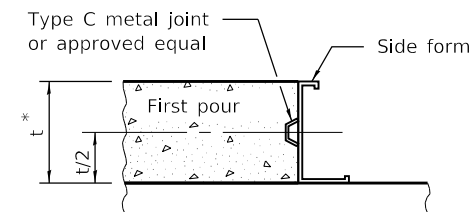


**TYPE C METAL JOINT**

**SECTION A-A**

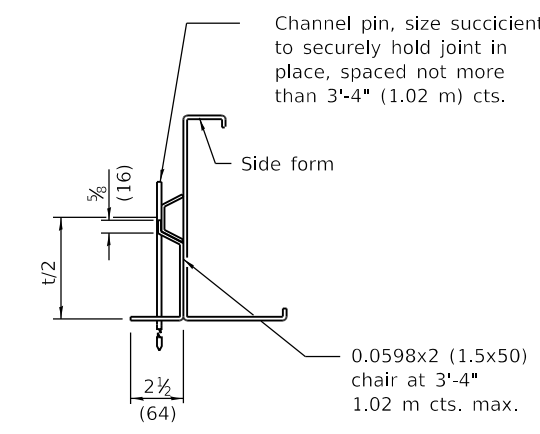


**LONGITUDINAL SAWED JOINT**

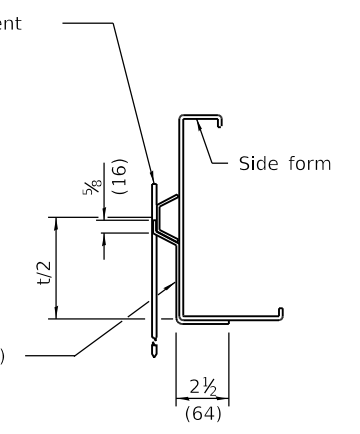


**LONGITUDINAL KEYED JOINT**

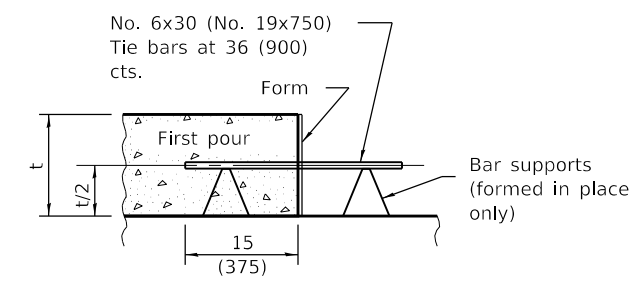
\* 8 (203) min. pavement thickness for keyed joints.



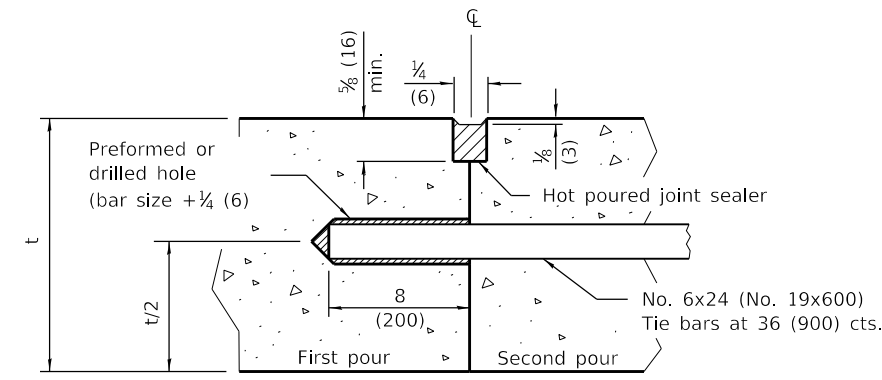
**SUPPORTING CHAIR ALTERNATE**



**SUPPORTING CHAIR ALTERNATE**



**LONGITUDINAL CONSTRUCTION JOINT**  
(TIE BAR FORMED IN PLACE OR MECHANICALLY INSERTED)



**LONGITUDINAL CONSTRUCTION JOINT**  
(TIE BAR GROUTED IN PLACE)

**GENERAL NOTES**

All slope ratios are expressed as units of vertical displacement to units of horizontal displacement (V:H).

All dimensions are in inches (millimeters) unless otherwise shown.

Illinois Department of Transportation

PASSED January 1, 2022  
*Michael Beard*  
ENGINEER OF POLICY AND PROCEDURES

APPROVED January 1, 2022  
*Scott Cline*  
ENGINEER OF DESIGN AND ENVIRONMENT

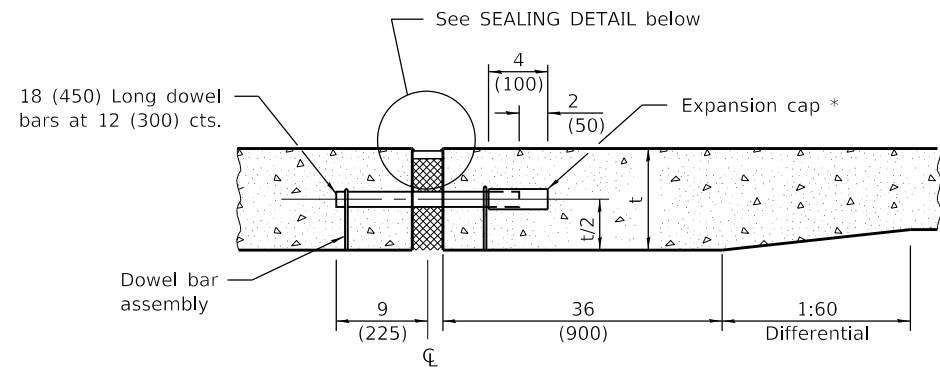
ISSUED 1-1-97

DATE	REVISIONS
1-1-22	Revised DOWEL BAR TABLE on Sheet 2.
1-1-18	Changed tie bar spacing to 36 (900) cts. Revised DOWEL BAR TABLE.

**PAVEMENT JOINTS**

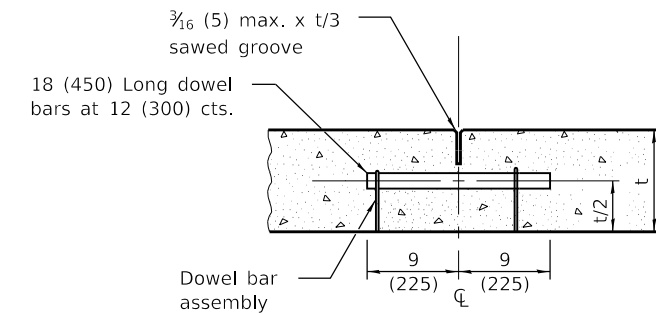
(Sheet 1 of 2)

**STANDARD 420001-10**

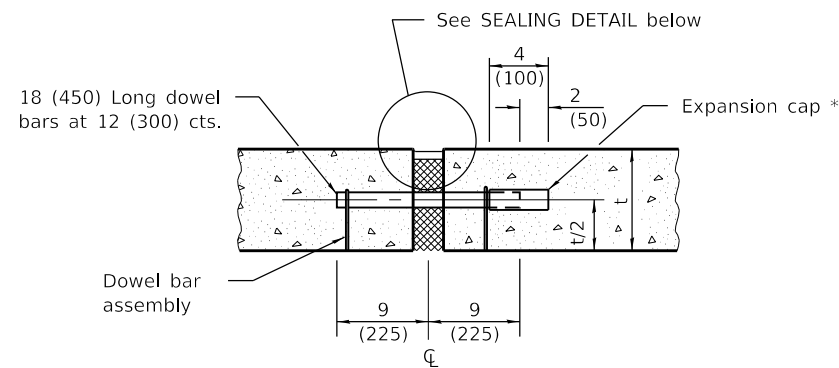


**TRANSVERSE EXPANSION JOINT**  
(FOR PAVEMENTS WITH UNEQUAL THICKNESS)

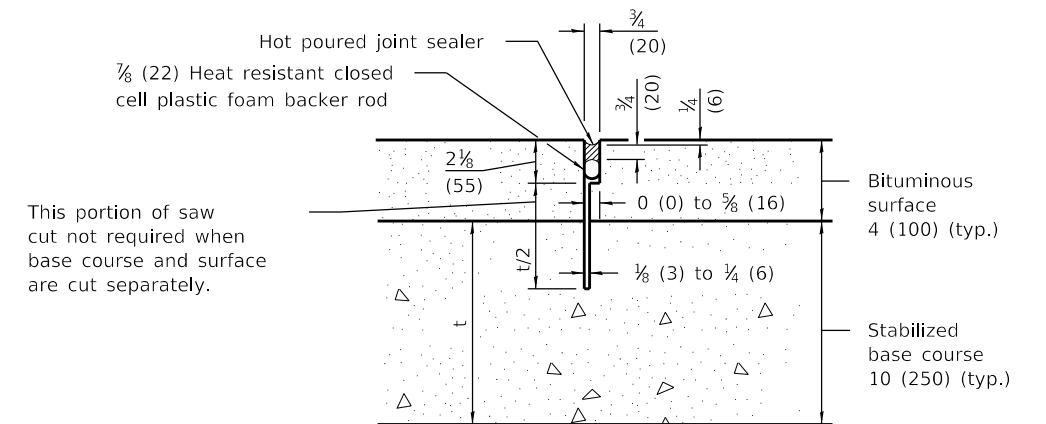
\* Expansion caps shall be installed on the exposed end of each dowel bar once the header has been removed and the joint filler material has been installed.



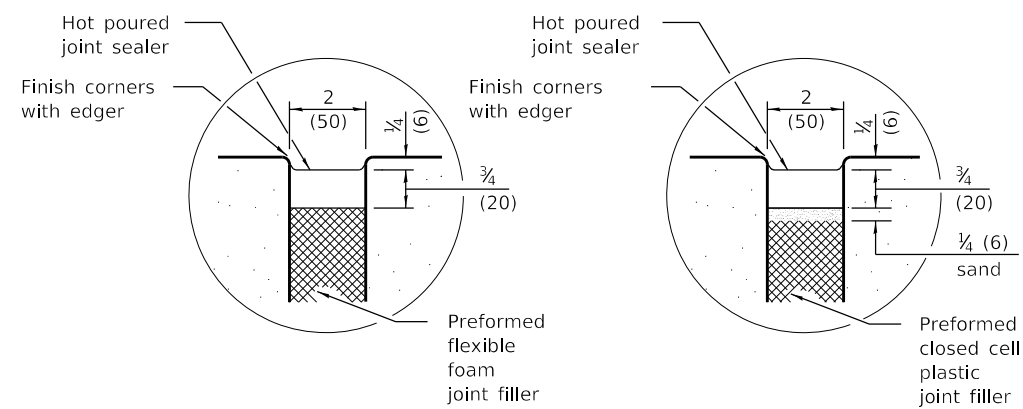
**TRANSVERSE CONTRACTION JOINT**



**TRANSVERSE EXPANSION JOINT**  
(FOR PAVEMENTS WITH EQUAL THICKNESS)



**TRANSVERSE CONTRACTION JOINT**  
(FOR CAM, CFA AND LFA BASE COURSE MIXTURES)



**SEALING DETAIL**

DOWEL BAR TABLE	
PAVEMENT THICKNESS	DOWEL BAR DIAMETER
10 (250) and greater	1 1/2 (38)
8.01 (201) thru 9.99 (249)	1 1/4 (32)
8 (200) and less	1 (25)