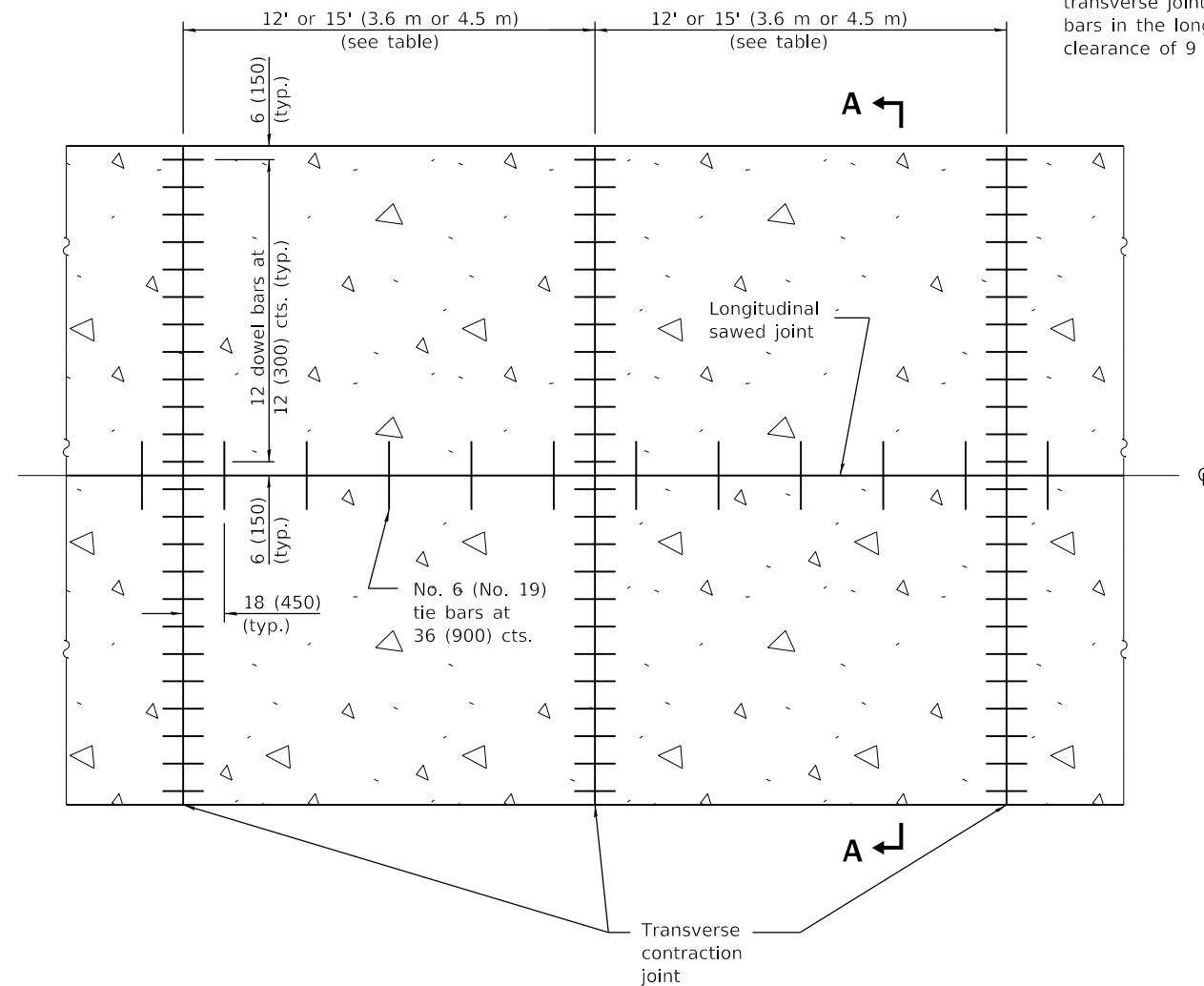


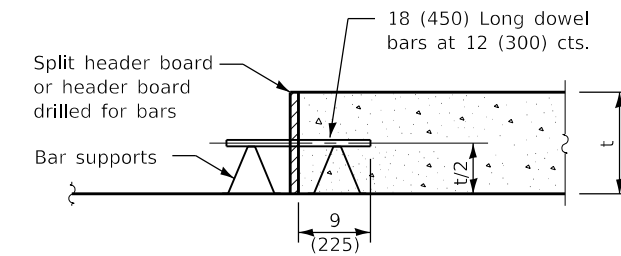
**SECTION A-A**  
(TYPICAL 2-LANE WITH SHOULDERS)

Pavement Thickness	Spacing of Transverse Contraction Joints
Less than 10 (250)	12' (3.6 m) *
10 (250) and greater	15' (4.5 m) *

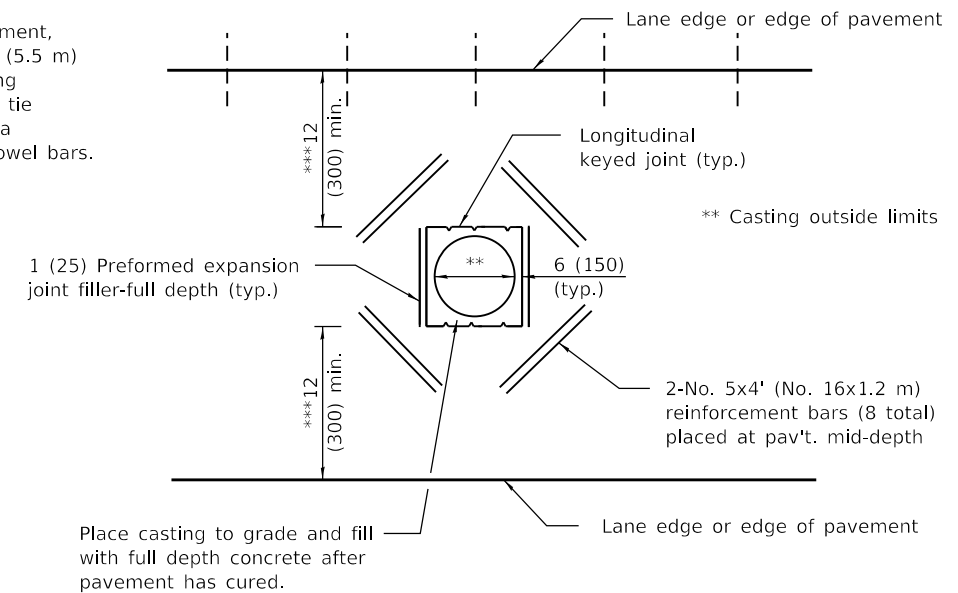
\* When placed adjacent to existing PCC pavement, use a spacing between 12' (3.6 m) and 18' (5.5 m) so the joints are in prolongation with existing transverse joints. Also adjust the spacing of tie bars in the longitudinal joint(s) to maintain a clearance of 9 (225) from the end of the dowel bars.



**PAVEMENT PLAN**



**TRANSVERSE CONSTRUCTION JOINT**



**DETAIL OF ADDED REINFORCEMENT FOR PAVEMENT BLOCKS-OUTS**

\*\*\* When the 12 (300) minimum cannot be achieved, the transverse joints shall be extended to either the longitudinal joint or edge of pavement.

**GENERAL NOTES**

See Standard 420001 for details of joints not shown.

All dimensions are in inches (millimeters) unless otherwise shown.

Illinois Department of Transportation

PASSED January 1, 2022  
*Michael Beard*  
ENGINEER OF POLICY AND PROCEDURES

APPROVED January 1, 2022  
*John C. ...*  
ENGINEER OF DESIGN AND ENVIRONMENT

ISSUED 1-1-97

DATE	REVISIONS
1-1-22	Revised spacing of transverse contraction joints and header board callout.
1-1-18	Changed spacing of tie bars to 36 (900).

**24' (7.2 m) JOINTED PCC PAVEMENT**

**STANDARD 420101-07**