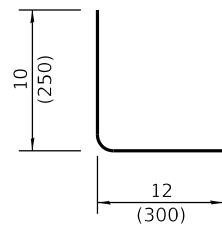
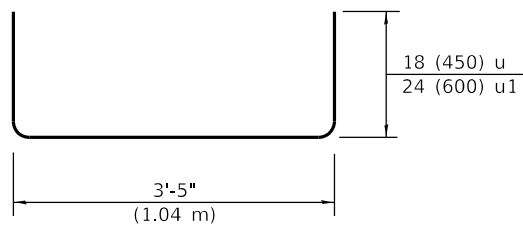


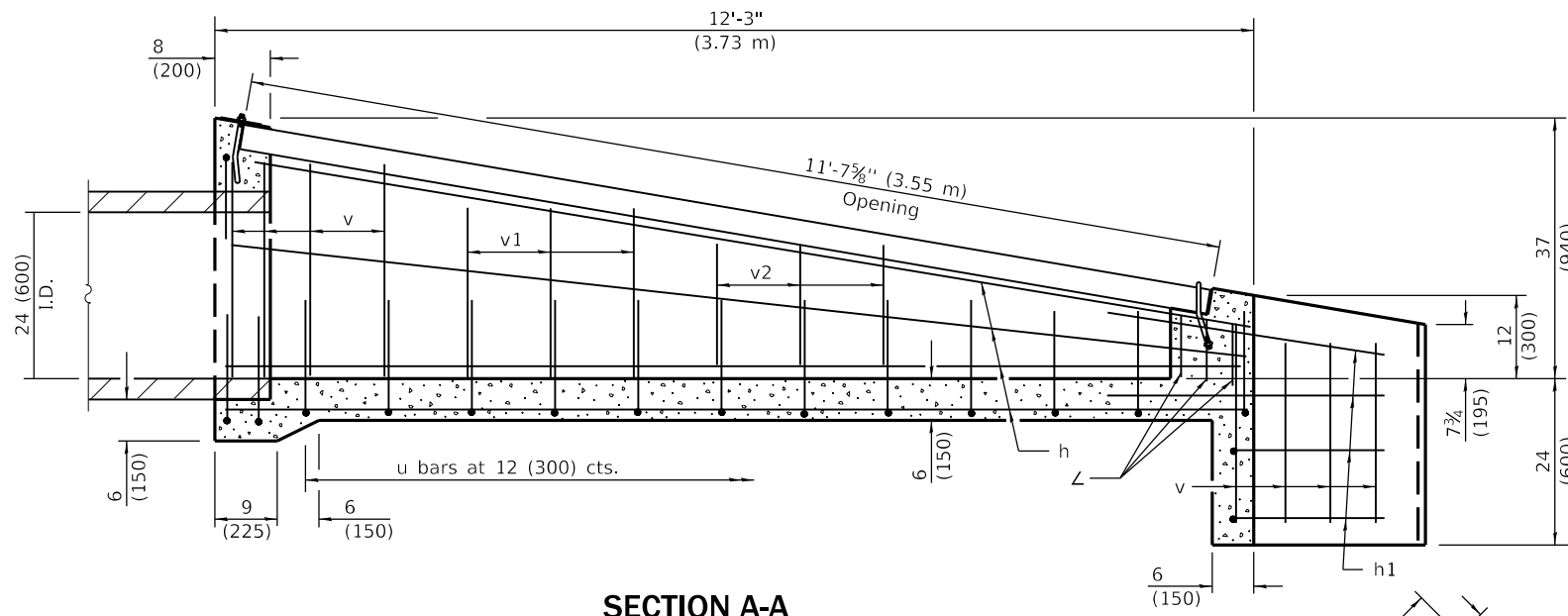
**Bar h1**



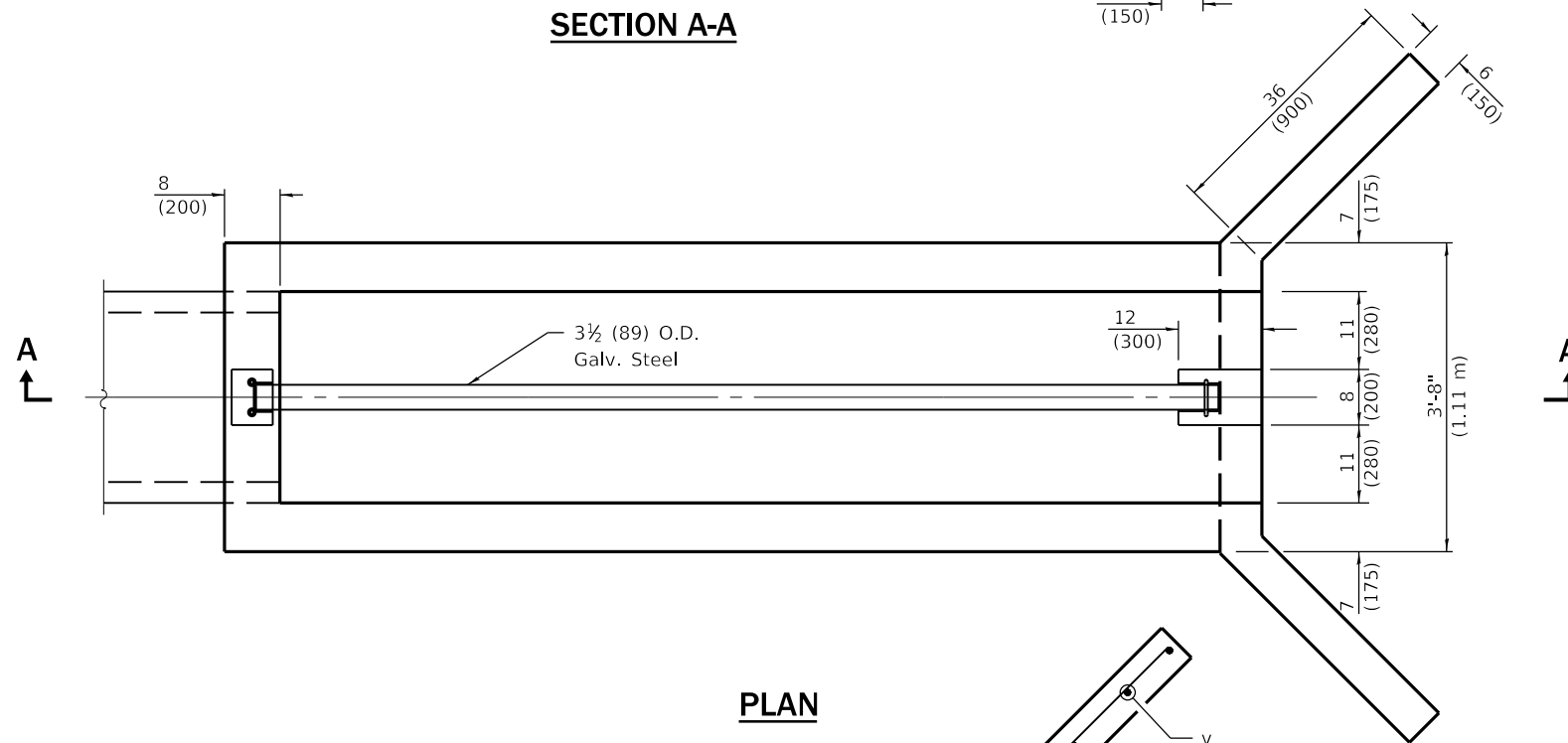
**Bar L**



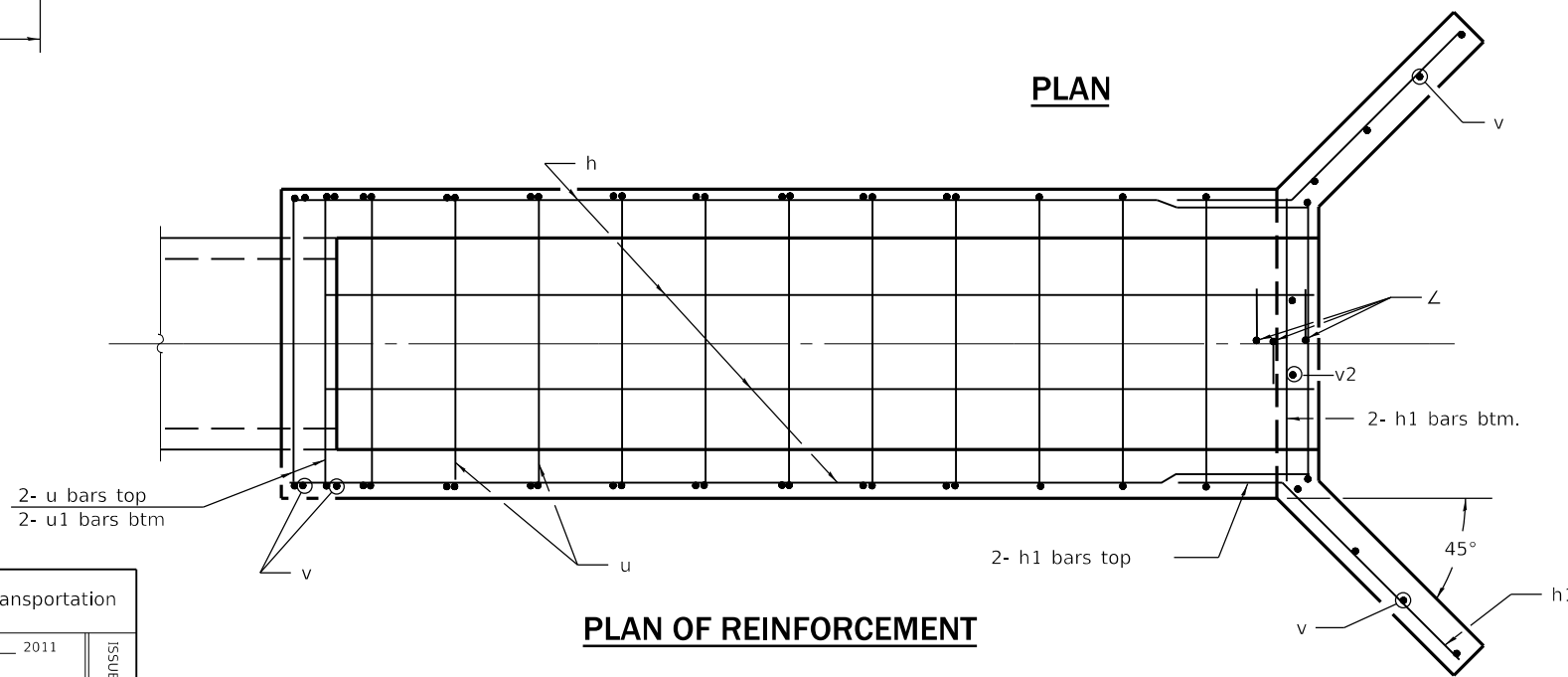
**Bar u & u1**



**SECTION A-A**



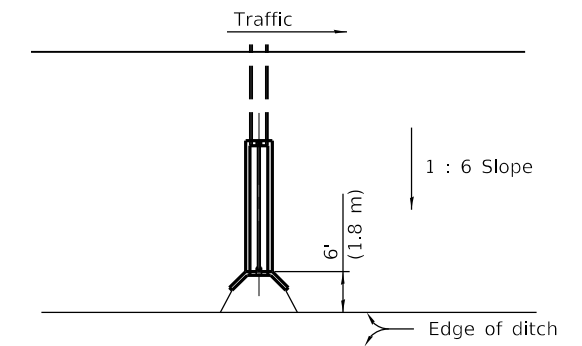
**PLAN**



**PLAN OF REINFORCEMENT**

Material required for one inlet box

Bar	Qty.	Size	Length
h	10	No. 4 (No. 13)	12'-0" (3.66 m)
h1	8	No. 4 (No. 13)	4'-5" (1.35 m)
L	3	No. 4 (No. 13)	22 (550)
u	14	No. 4 (No. 13)	6'-5" (1.94 m)
u1	2	No. 4 (No. 13)	7'-5" (2.24 m)
v	16	No. 4 (No. 13)	30 (760)
v1	6	No. 4 (No. 13)	24 (610)
v2	8	No. 4 (No. 13)	18 (460)
Concrete		cu. yds. (m <sup>3</sup> )	2.2 (1.68)
Reinf. Bars		lbs. (kg)	220 (99.8)
Galv. Steel Pipe		3 1/2 (89) O.D.	11'-7 1/2" (3.55 m)



Sketch showing location and direction of box in relation to ditch.

**GENERAL NOTES**

All slope ratios are expressed as units of vertical displacement to units of horizontal displacement (V:H).

All dimensions are in inches (millimeters) unless otherwise shown.

DATE	REVISIONS
1-1-11	Corrected two bars in weir to 'v2'.
1-1-09	Switched units to English (metric).

**INLET BOX  
TYPE 24 (600) D**

(Sheet 1 of 2)

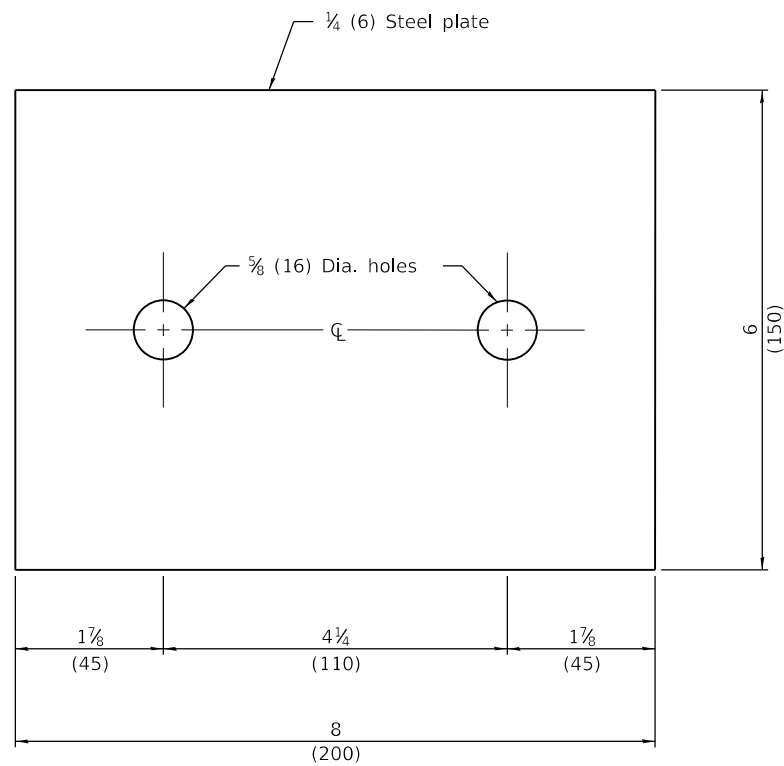
**STANDARD 542516-03**

Illinois Department of Transportation

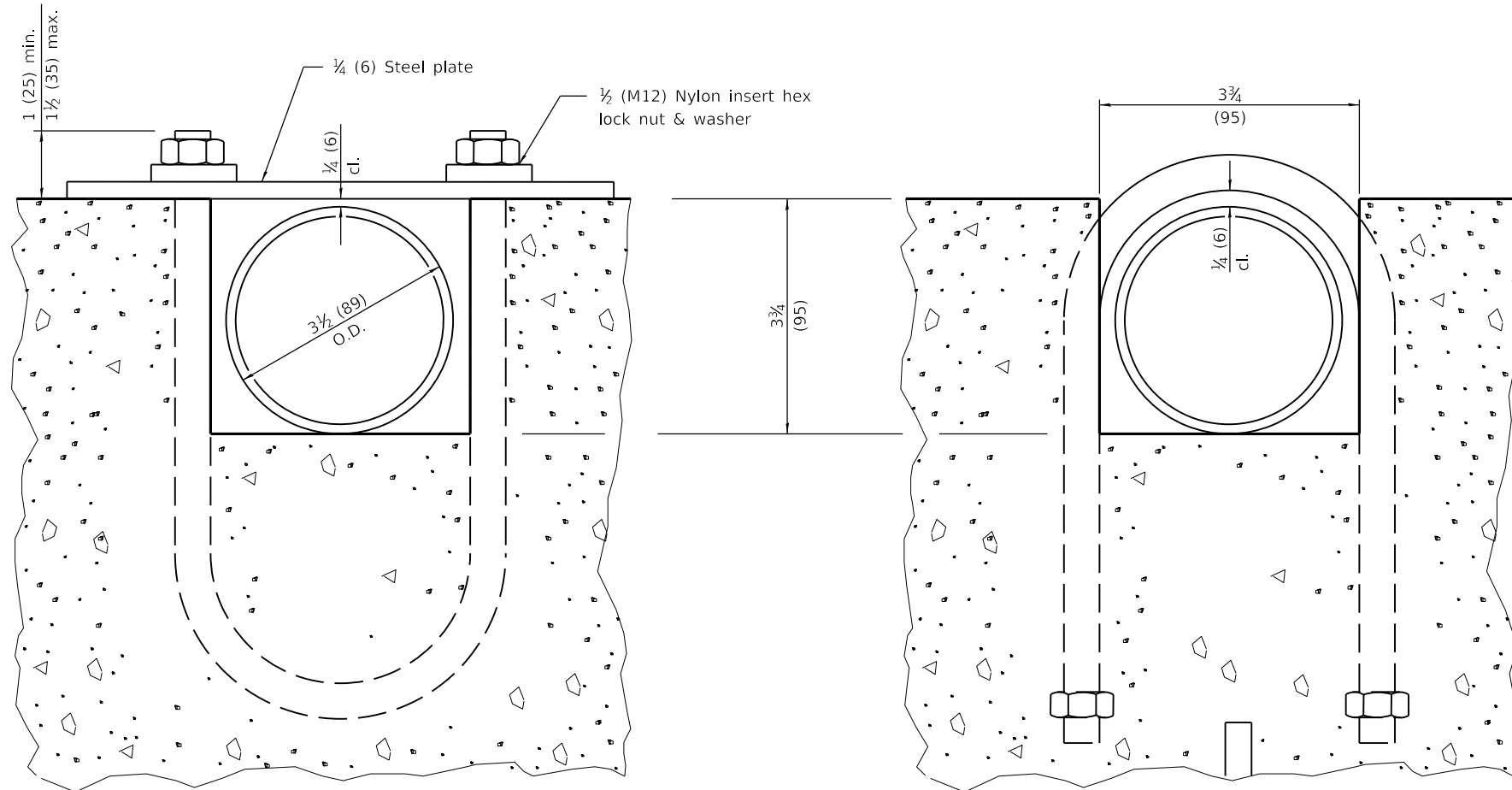
PASSED January 1, 2011  
*Michael Beard*  
 ENGINEER OF POLICY AND PROCEDURES

APPROVED January 1, 2011  
*Scott Schick*  
 ENGINEER OF DESIGN AND ENVIRONMENT

ISSUED 1-1-97

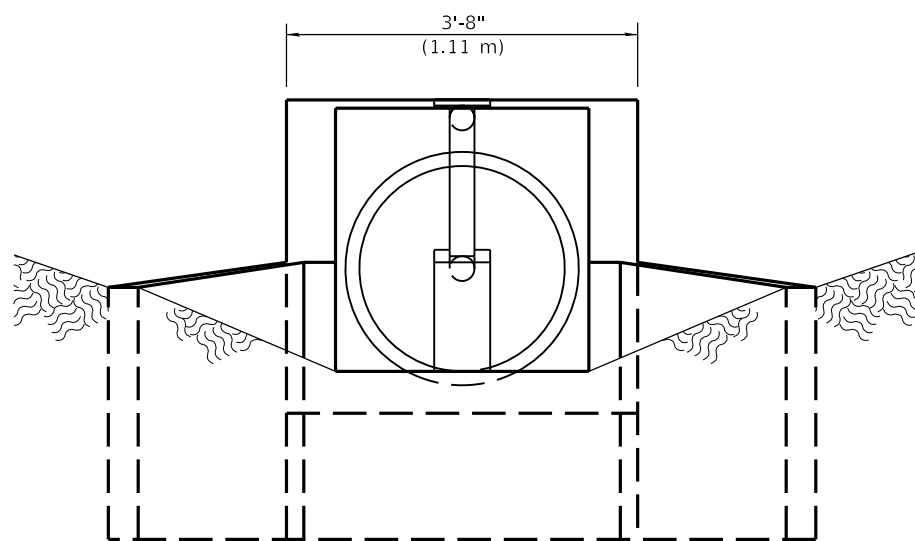


**TOP ANCHOR PLATE**  
(1-required)

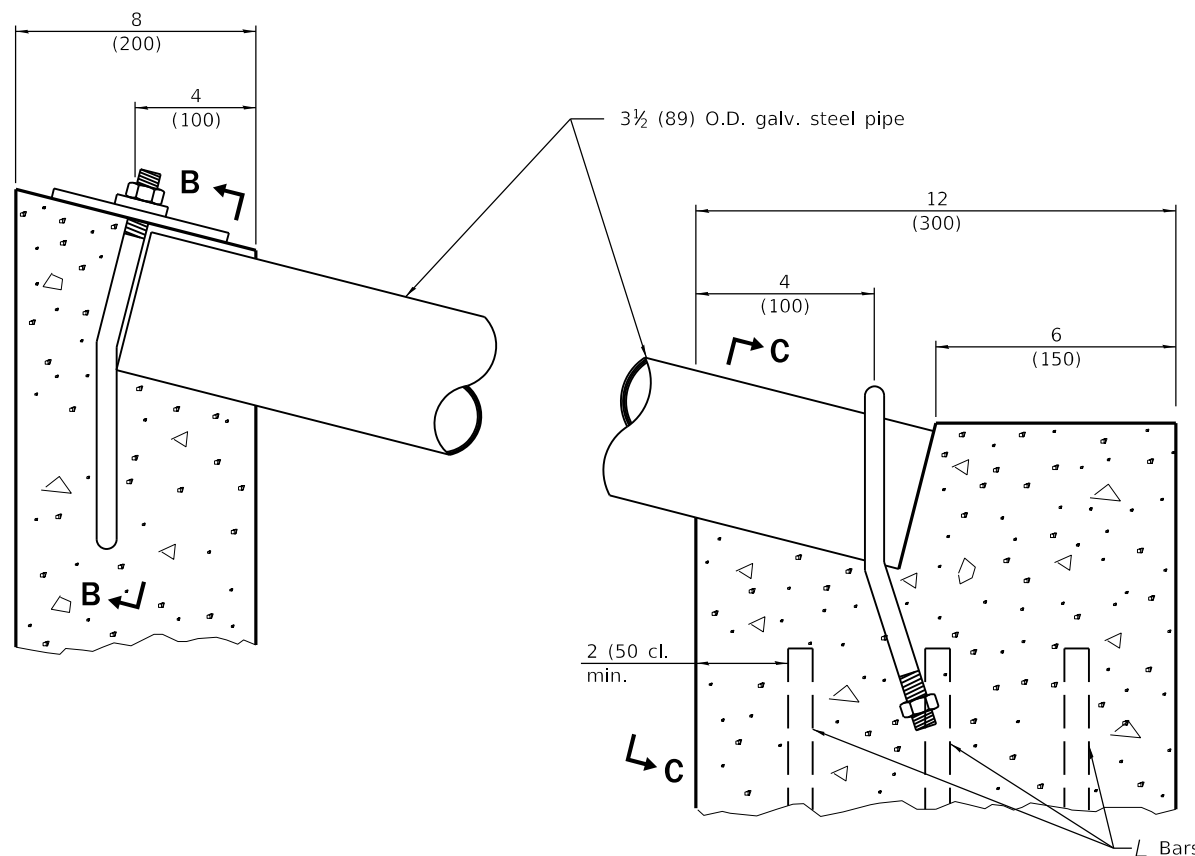


**SECTION B-B**

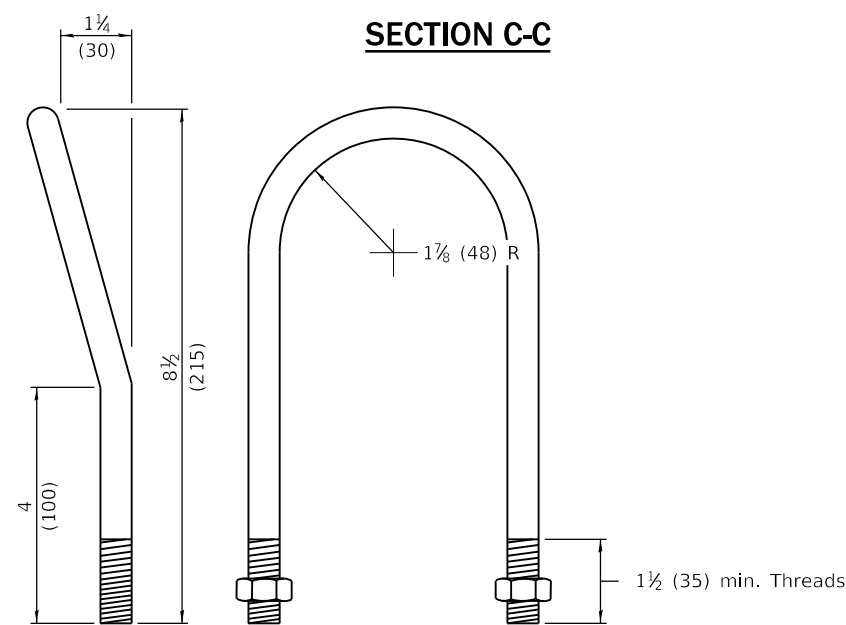
**SECTION C-C**



**END VIEW**



**DETAIL AT BLOCKOUTS**



**1/2 (M12) U BOLT**  
(2-required)

**INLET BOX  
TYPE 24 (600) D**

(Sheet 2 of 2)

**STANDARD 542516-03**

Illinois Department of Transportation

PASSED January 1, 2011  
*Michael Beard*  
ENGINEER OF POLICY AND PROCEDURES

APPROVED January 1, 2011  
*Scott Schick*  
ENGINEER OF DESIGN AND ENVIRONMENT

ISSUED 1-1-97