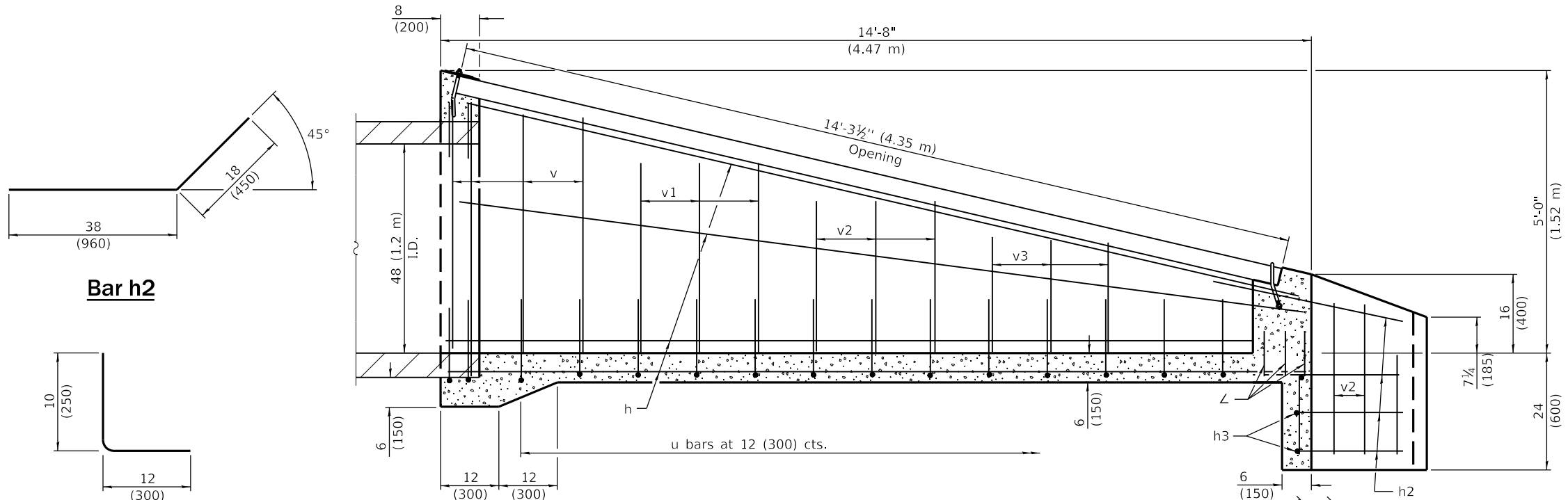
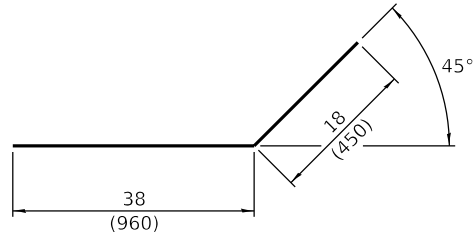


Material required for one inlet box

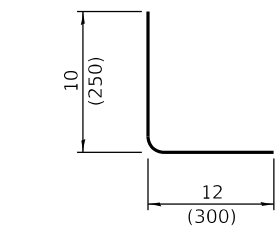
Bar	Qty.	Size	Length
h	11	No. 4 (No. 13)	14'-5" (4.40 m)
h2	8	No. 4 (No. 13)	4'-8" (1.40 m)
h3	2	No. 4 (No. 13)	5'-6" (1.70 m)
L	6	No. 4 (No. 13)	22 (550)
u	16	No. 4 (No. 13)	8'-9" (2.67 m)
u1	2	No. 4 (No. 13)	9'-9" (2.97 m)
v	8	No. 4 (No. 13)	4'-3" (1.30 m)
v1	6	No. 4 (No. 13)	3'-6" (1.07 m)
v2	13	No. 4 (No. 13)	33 (840)
v3	10	No. 4 (No. 13)	21 (530)
Concrete		cu. yds. (m ³)	5.0 (3.80)
Reinf. Bars		lbs. (kg)	324 (147)
Galv. Steel Pipe		3½ (89) O.D.	2 at 14'-3¼" (4.35 m)



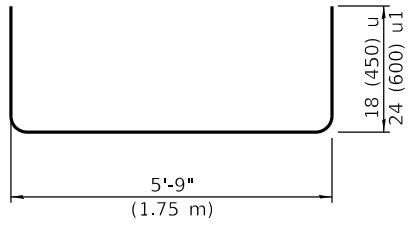
SECTION A-A



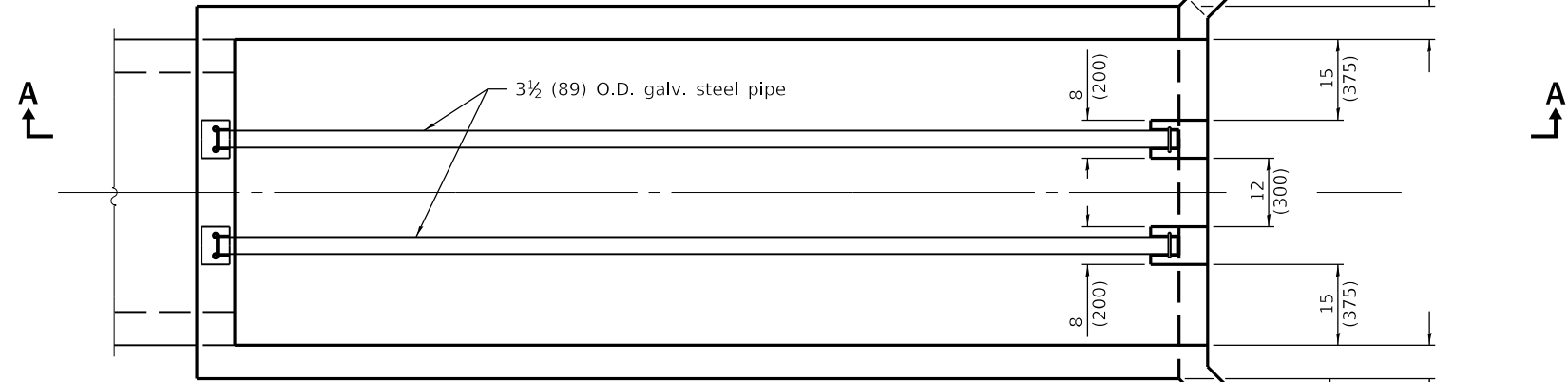
Bar h2



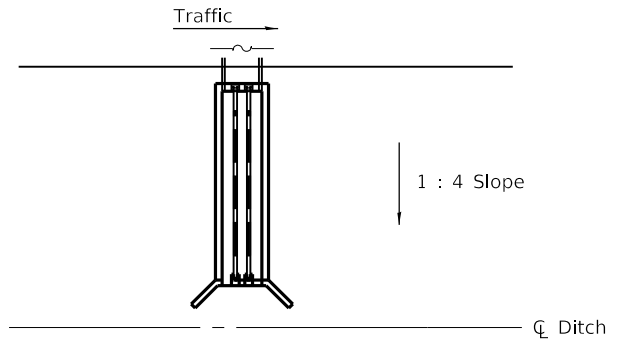
Bar L



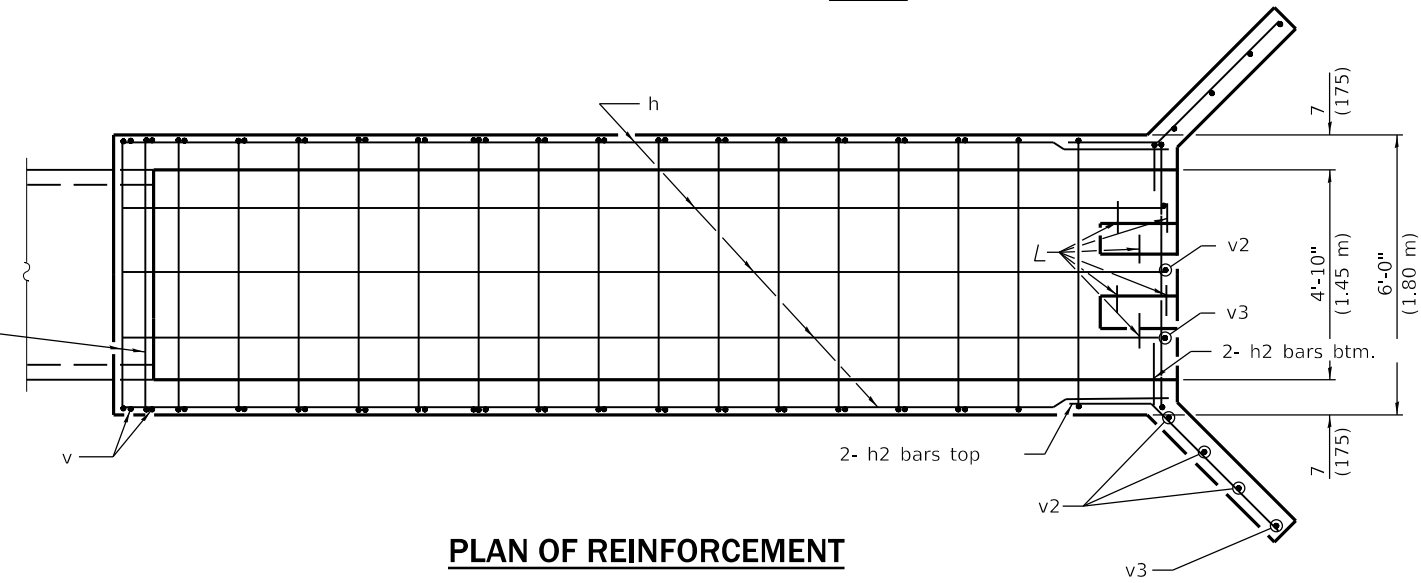
Bar u & u1



PLAN



Sketch showing location and direction of box in relation to \bar{C} of ditch.



PLAN OF REINFORCEMENT

DATE	REVISIONS
1-1-09	Switched units to English (metric).
1-1-07	Soft converted metric rebar.

GENERAL NOTES
 All slope ratios are expressed as units of vertical displacement to units of horizontal displacement (V:H).

All dimensions are in inches (millimeters) unless otherwise shown.

**INLET BOX
 TYPE 48 (1200) A**

(Sheet 1 of 2)

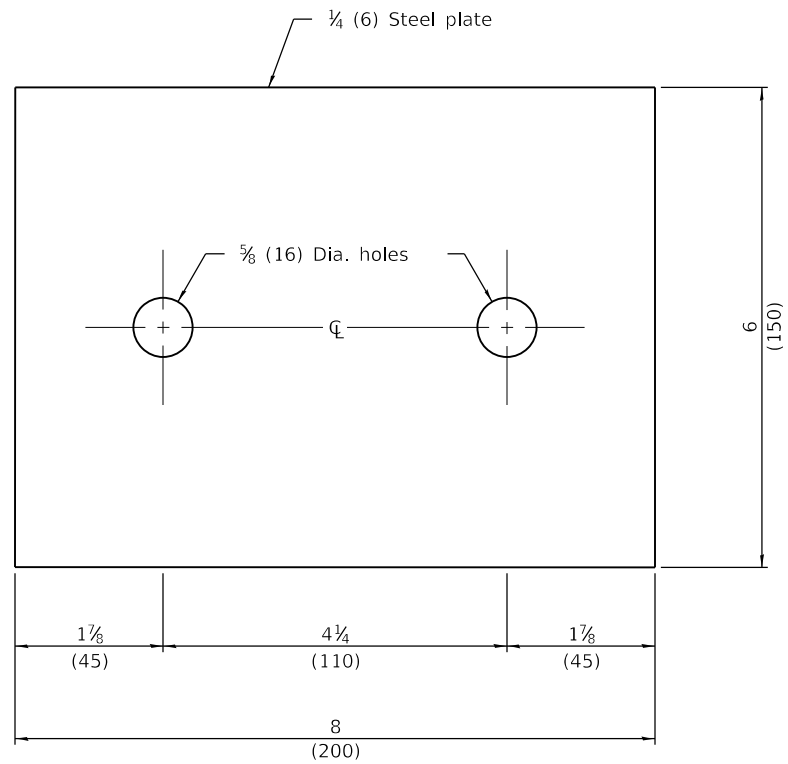
STANDARD 542541-02

Illinois Department of Transportation

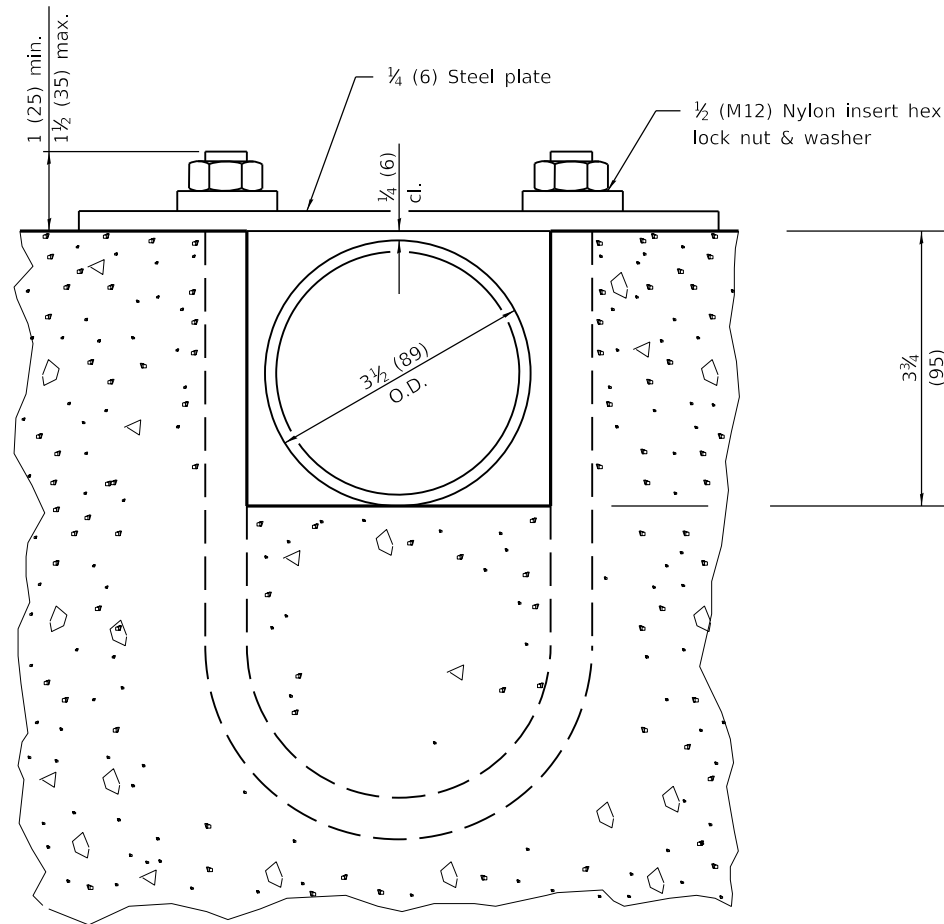
PASSED January 1, 2009
[Signature]
 ENGINEER OF POLICY AND PROCEDURES

APPROVED January 1, 2009
[Signature]
 ENGINEER OF DESIGN AND ENVIRONMENT

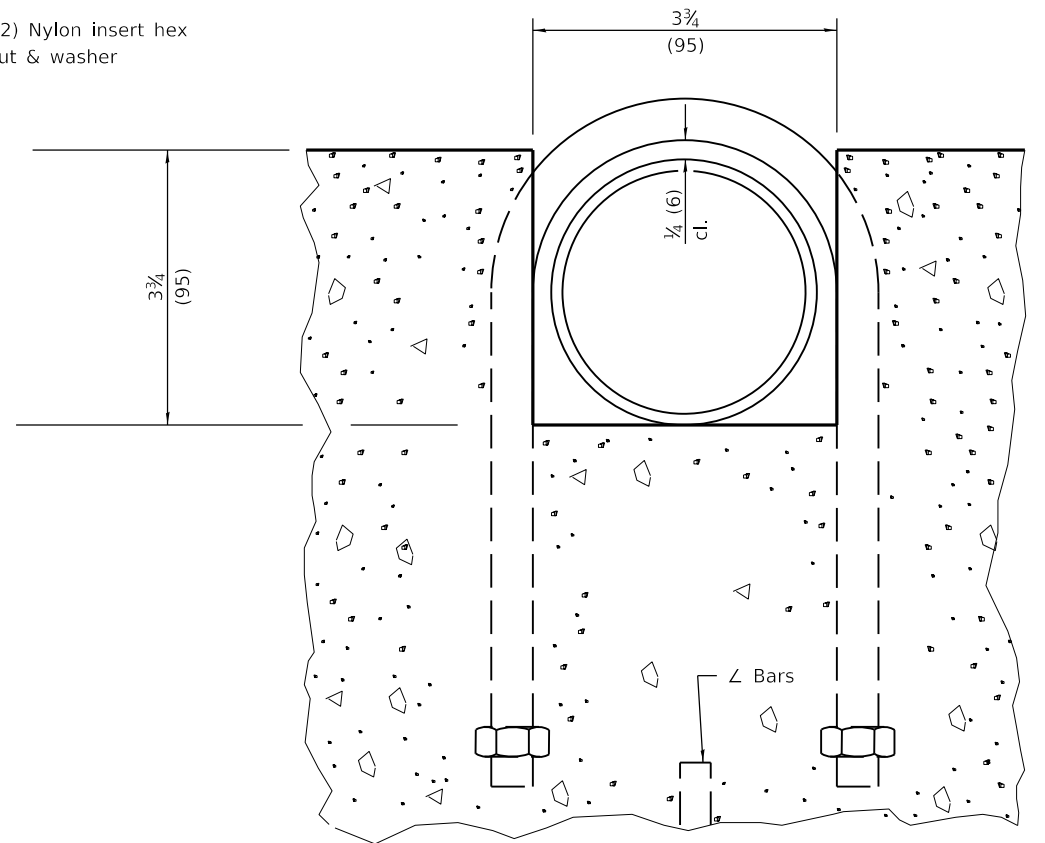
ISSUED 1-1-97



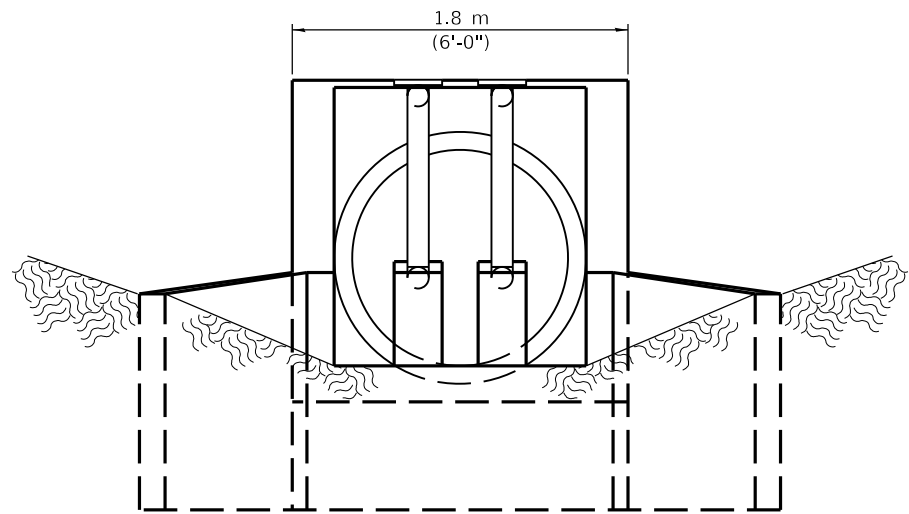
TOP ANCHOR PLATE
(2 - required)



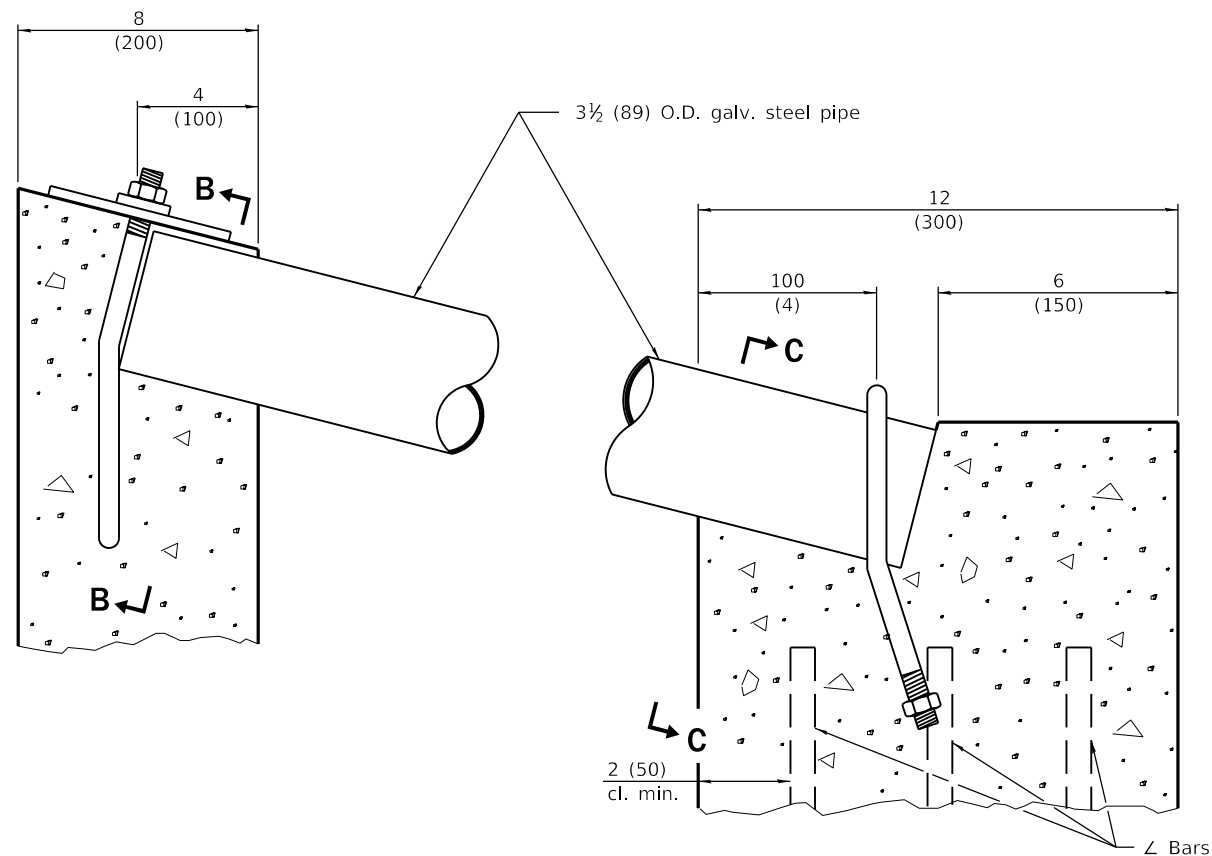
SECTION B-B



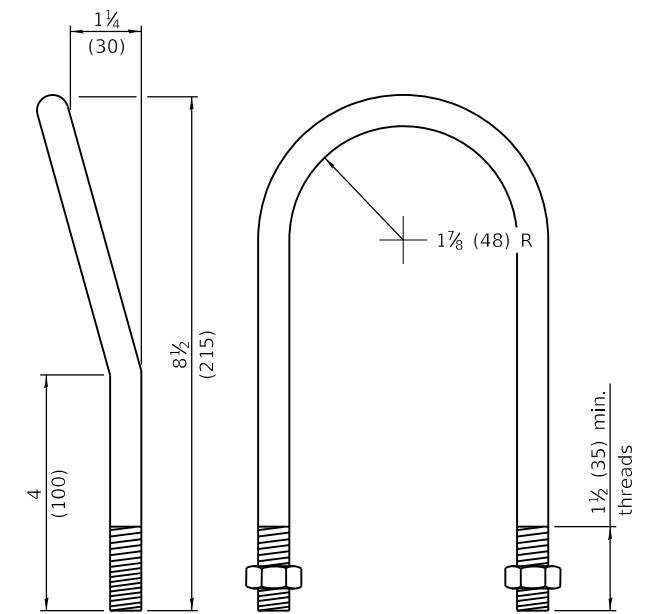
SECTION C-C



END VIEW



DETAIL AT BLOCKOUTS



1/2 (M12) U BOLT
(4 - required)

**INLET BOX
TYPE 48 (1200) A**

(Sheet 2 of 2)

STANDARD 542541-02

Illinois Department of Transportation

PASSED January 1, 2009

ENGINEER OF POLICY AND PROCEDURES

APPROVED January 1, 2009

ENGINEER OF DESIGN AND ENVIRONMENT

ISSUED 1-1-97