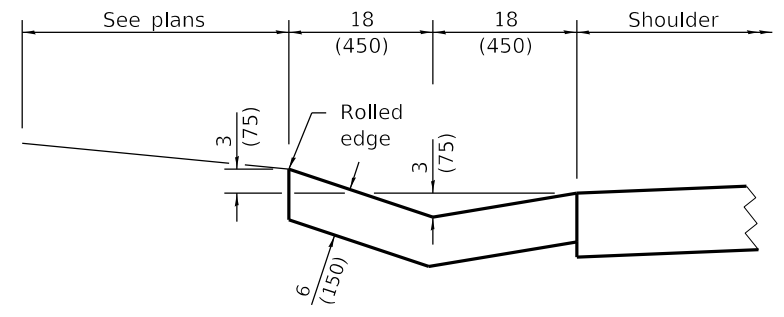
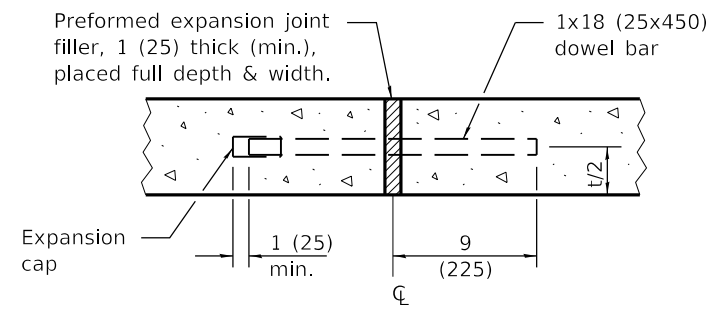


**PLAN**

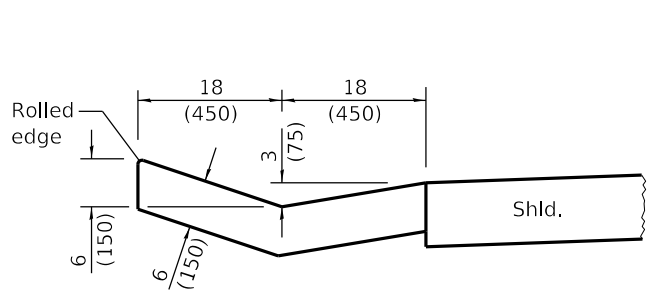
**TYPE A GUTTER**



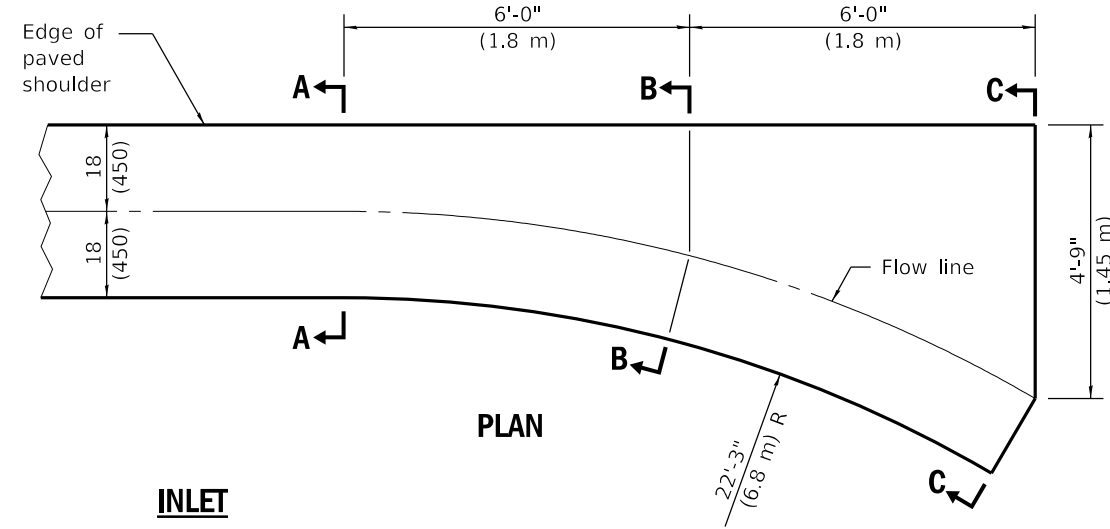
**SECTION D-D**



**EXPANSION JOINT**



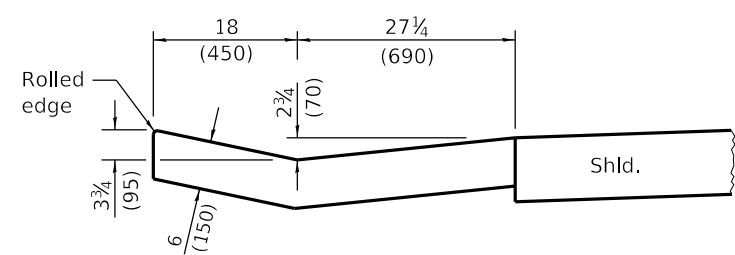
**SECTION A-A**



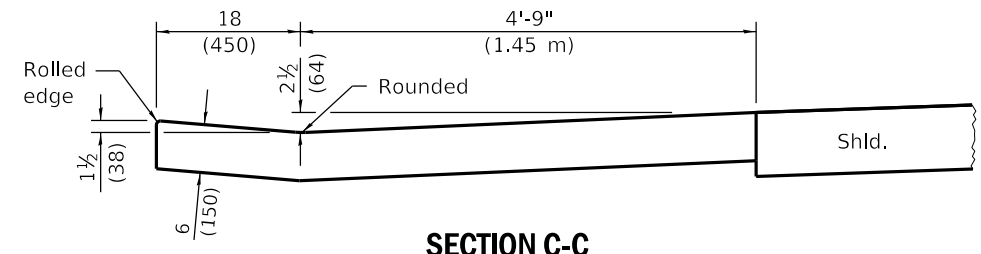
**PLAN**

**INLET**

QUANTITY OF CONCRETE  
Section A-A to C-C  
0.93 cu. yd. (0.71 m<sup>3</sup>)



**SECTION B-B**



**SECTION C-C**

All dimensions are in inches (millimeters) unless otherwise shown.

Illinois Department of Transportation

PASSED April 1, 2016  
*Michael Beard*  
ENGINEER OF POLICY AND PROCEDURES

APPROVED April 1, 2016  
*[Signature]*  
ENGINEER OF DESIGN AND ENVIRONMENT

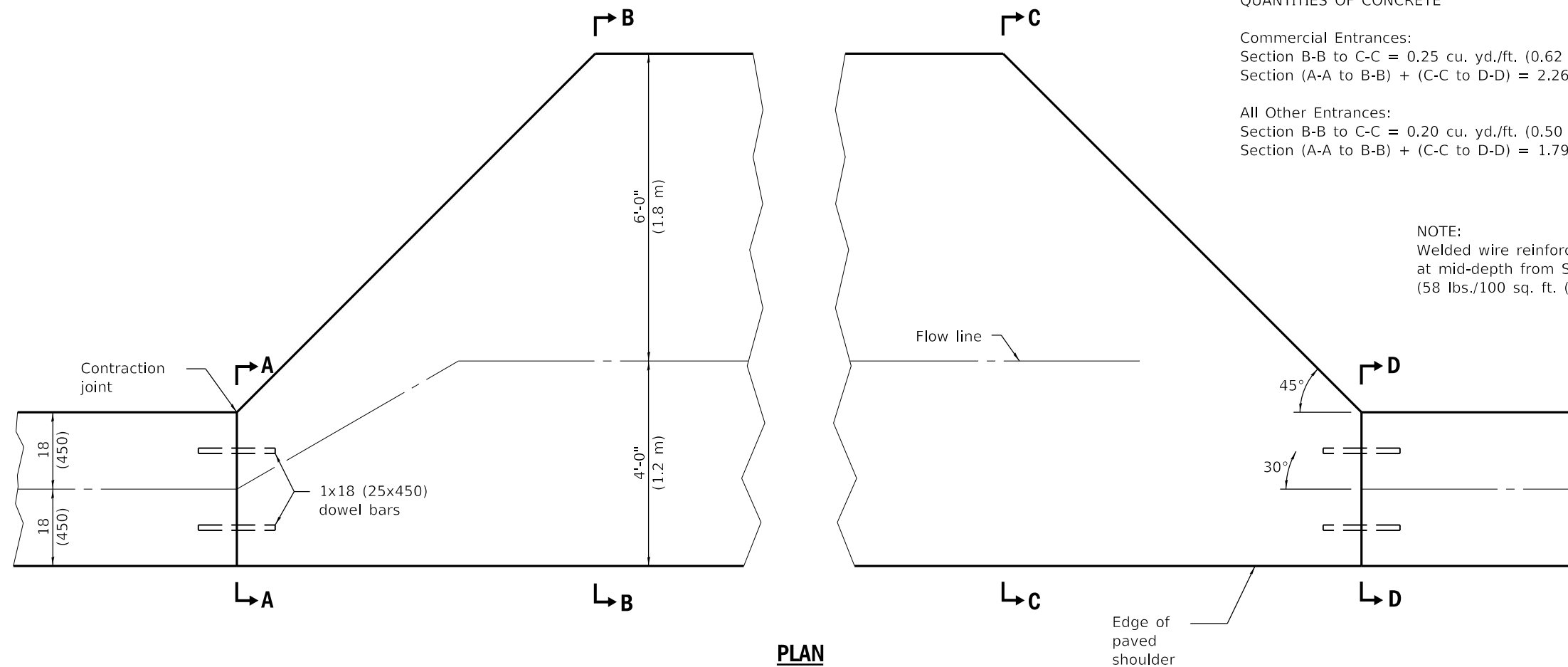
ISSUED 1-1-91  
46-T 03/05

DATE	REVISIONS
4-1-16	Changed terminology to 'welded wire reinforcement'.
1-1-09	Switched units to English (metric). Changed radii, adjusted qty's.

**TYPE A GUTTER  
(INLET, OUTLET & ENTRANCE)**

(Sheet 1 of 3)

**STANDARD 606101-05**



**QUANTITIES OF CONCRETE**

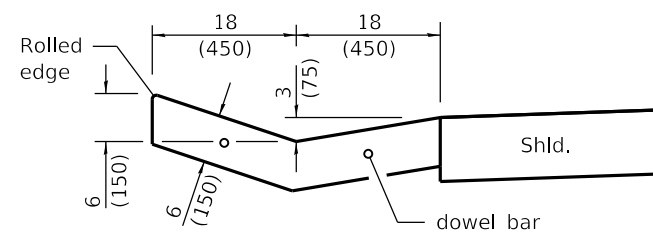
Commercial Entrances:  
 Section B-B to C-C = 0.25 cu. yd./ft. (0.62 m<sup>3</sup>/m).  
 Section (A-A to B-B) + (C-C to D-D) = 2.26 cu. yd. (1.73 m<sup>3</sup>).

All Other Entrances:  
 Section B-B to C-C = 0.20 cu. yd./ft. (0.50 m<sup>3</sup>/m).  
 Section (A-A to B-B) + (C-C to D-D) = 1.79 cu. yd. (1.37 m<sup>3</sup>).

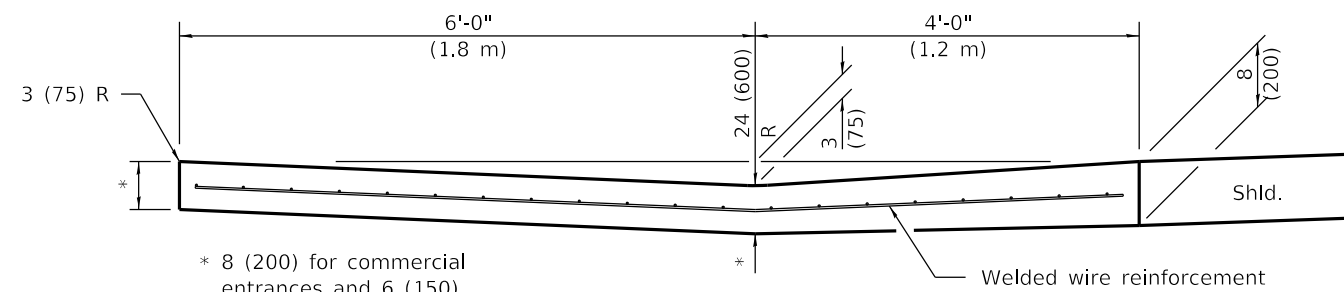
NOTE:  
 Welded wire reinforcement shall be installed  
 at mid-depth from Section A-A to D-D.  
 (58 lbs./100 sq. ft. (2.83 kg/m<sup>2</sup>))

**PLAN**

**ENTRANCE**



**SECTIONS A-A & D-D**



\* 8 (200) for commercial  
 entrances and 6 (150)  
 for all others.

**SECTIONS B-B & C-C**

Illinois Department of Transportation

PASSED April 1, 2016

*Michael Beard*  
 ENGINEER OF POLICY AND PROCEDURES

APPROVED April 1, 2016

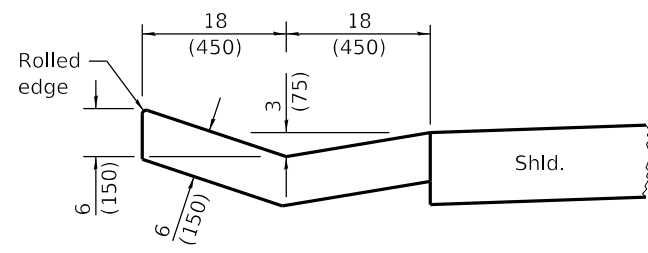
*[Signature]*  
 ENGINEER OF DESIGN AND ENVIRONMENT

ISSUED 1-1-97

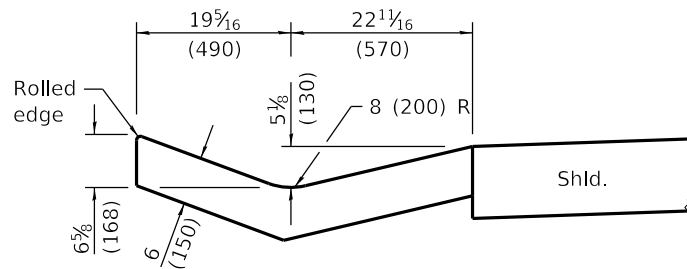
**TYPE A GUTTER**  
**(INLET, OUTLET & ENTRANCE)**

(Sheet 2 of 3)

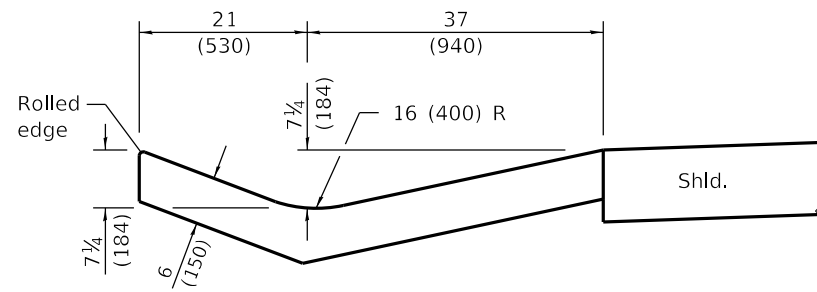
**STANDARD 606101-05**



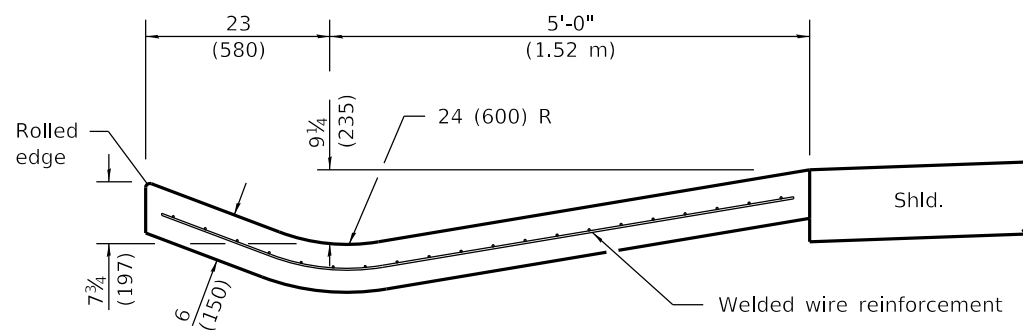
**SECTION A-A**



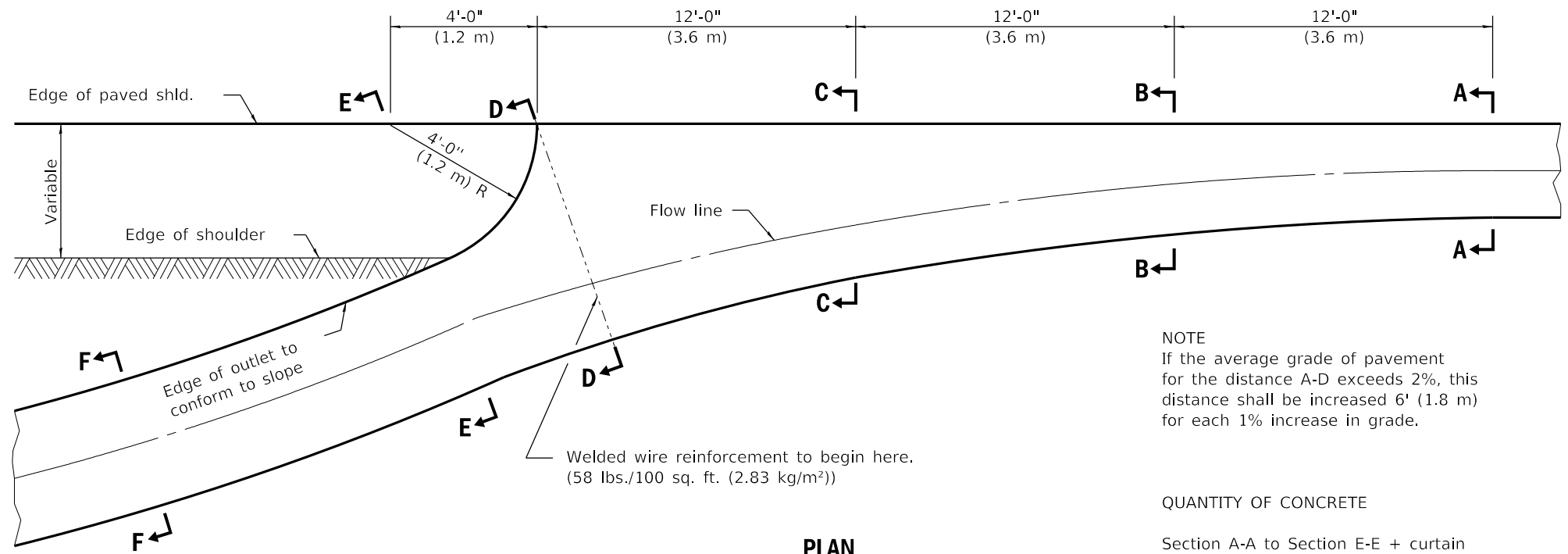
**SECTION B-B**



**SECTION C-C**



**SECTION D-D**



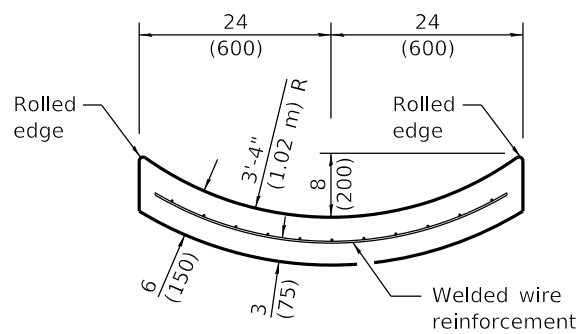
**OUTLET**

**PLAN**

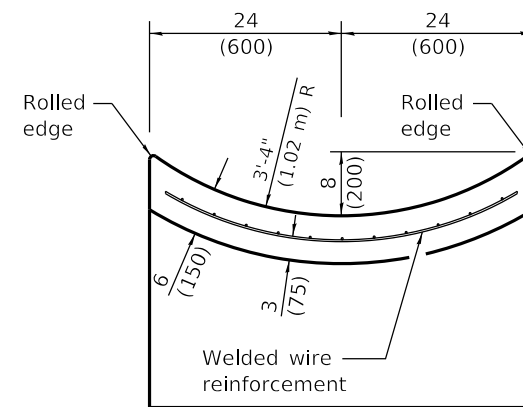
**NOTE**  
If the average grade of pavement for the distance A-D exceeds 2%, this distance shall be increased 6' (1.8 m) for each 1% increase in grade.

**QUANTITY OF CONCRETE**

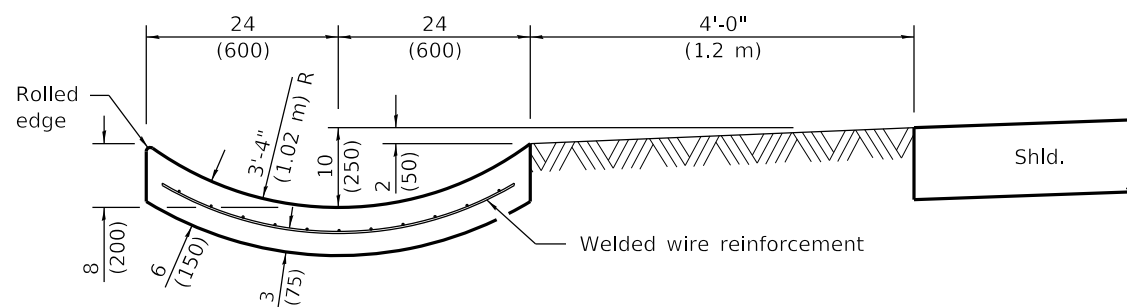
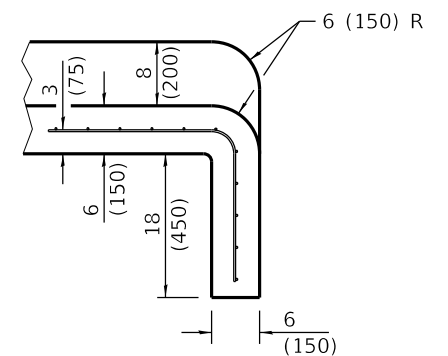
Section A-A to Section E-E + curtain wall = 3.53 cu. yd. (2.70 m³) of concrete.  
Section F-F = 0.079 cu. yd./ft. (0.2 m³/m).



**SECTION F-F**



**SECTIONS AT END OF OUTLET**



**SECTION E-E**

Illinois Department of Transportation

PASSED Michael Beard April 1, 2016  
ENGINEER OF POLICY AND PROCEDURES

APPROVED [Signature] April 1, 2016  
ENGINEER OF DESIGN AND ENVIRONMENT

ISSUED 1-1-97

**TYPE A GUTTER  
(INLET, OUTLET & ENTRANCE)**

(Sheet 3 of 3)

**STANDARD 606101-05**