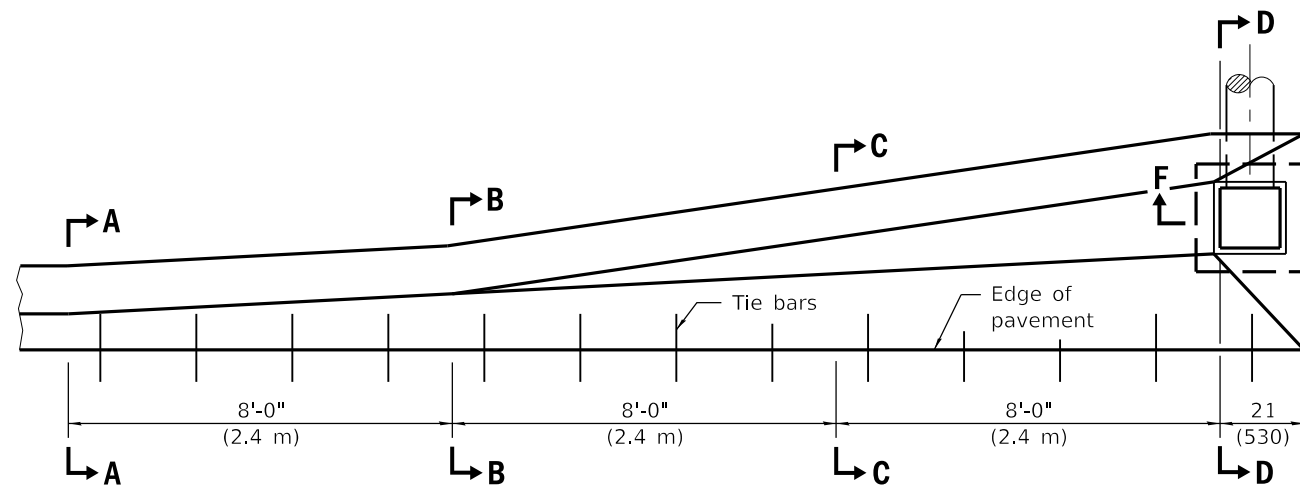
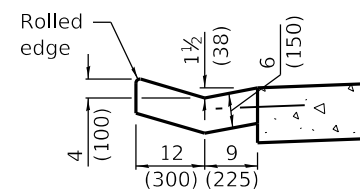


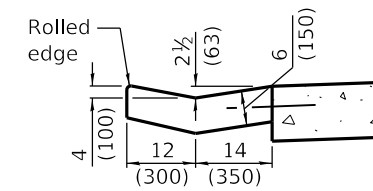
PLAN - DOUBLE OUTLET



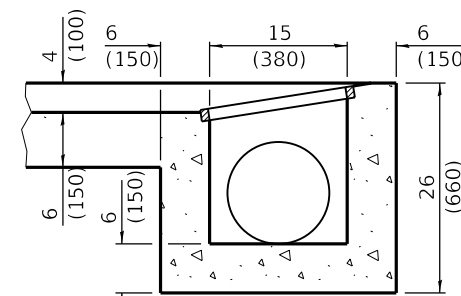
PLAN - SINGLE OUTLET



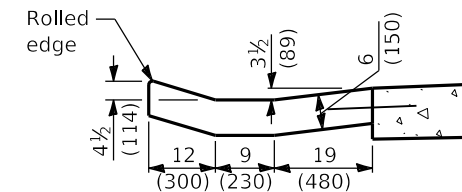
SECTION A-A



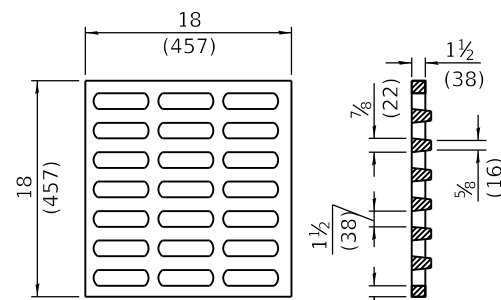
SECTION B-B



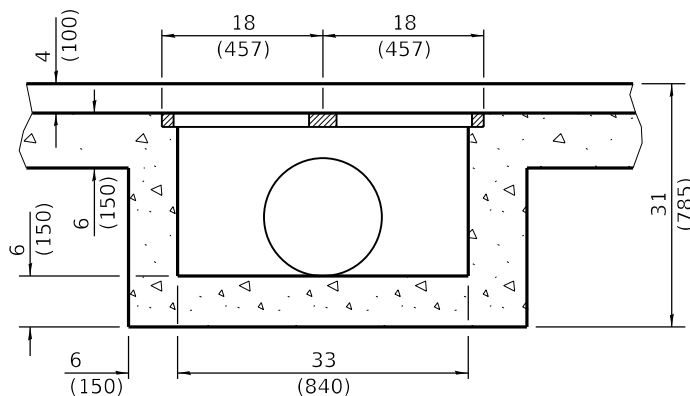
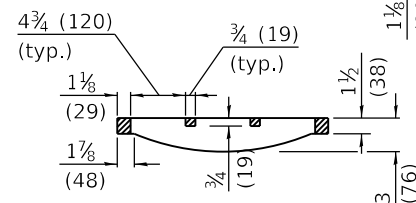
SECTION F-F



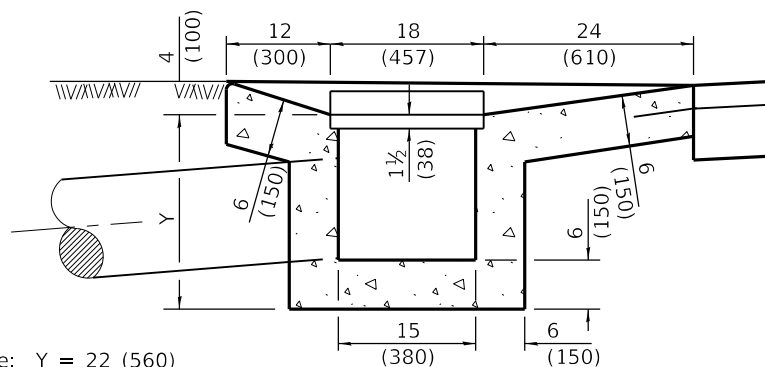
SECTION C-C



GRATE TYPE B



SECTION E-E



SECTION D-D

Single: Y = 22 (560)
Double: Y = 27 (685)

QUANTITIES

Material	Single	Double
Concrete - cu. yd. (m ³)	1.7 (1.3)	3.1 (2.4)
Cast Iron Grate - Ea.	1	2
Pipe Drain - Dia. in (mm)	12 (300)	15 (375)

GENERAL NOTES

The gutter outlet shall be tied to the pavement in accordance with details for longitudinal construction joint shown on Standard 420001.

If the average grade of the pavement for the distance A-D exceeds 2%, this distance shall be increased 6'-0" (1.8 m) for each 1% increase in grade.

All dimensions are in inches (millimeters) unless otherwise shown.

DATE	REVISIONS
1-1-18	Deleted second General Note to avoid conflict with first General Note.
1-1-09	Switched units to English (metric).

OUTLET TYPE 1 FOR TYPE B GUTTER

STANDARD 606206-04

Illinois Department of Transportation

PASSED January 1, 2018
Michael Beard
ENGINEER OF POLICY AND PROCEDURES

APPROVED January 1, 2018
Marcus M. Beck
ENGINEER OF DESIGN AND ENVIRONMENT

ISSUED 6-1-18