

**GENERAL NOTES**

This standard shows attachment to side mounted bridge railing, Type IL-OH.

See Standard 630001 for details of guardrail not shown.

Thrie beam rail shall be bolted to block-out at all posts.

All slope ratios are expressed as units of vertical displacement to units of horizontal displacement (V:H).

All dimensions are in inches (millimeters) unless otherwise shown.

DATE	REVISIONS
1-1-22	New Standard

**TRAFFIC BARRIER TERMINAL, TYPE 13**

(Sheet 1 of 3)

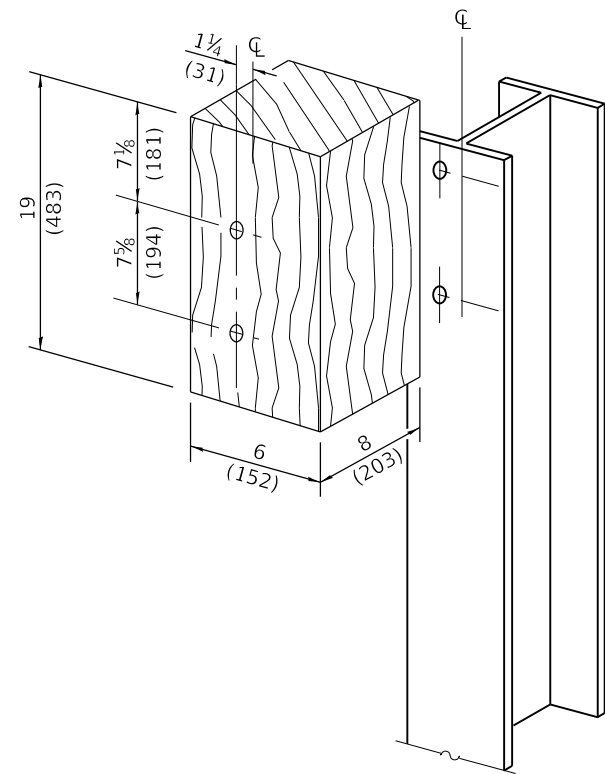
**STANDARD 631061**

Illinois Department of Transportation

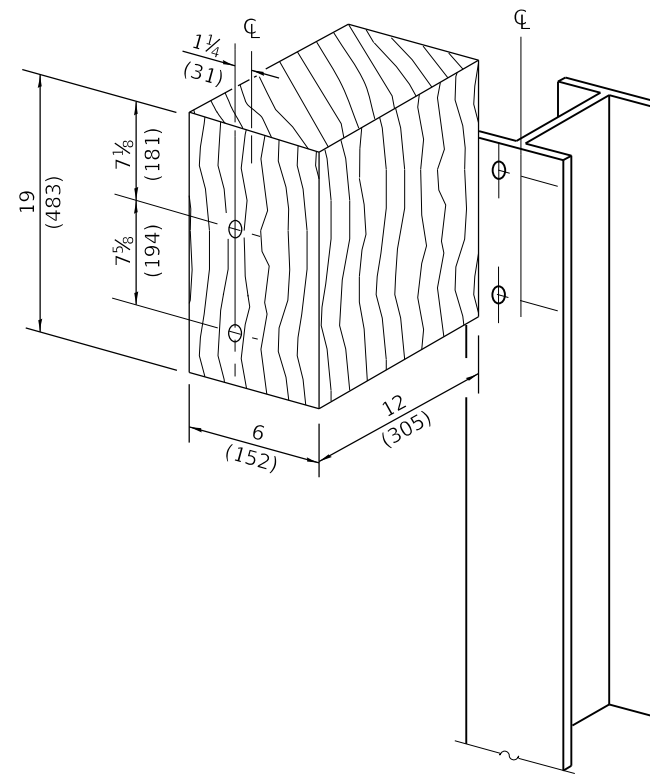
PASSED January 1, 2022  
*Michael Beard*  
 ENGINEER OF POLICY AND PROCEDURES

APPROVED January 1, 2022  
*John C. ...*  
 ENGINEER OF DESIGN AND ENVIRONMENT

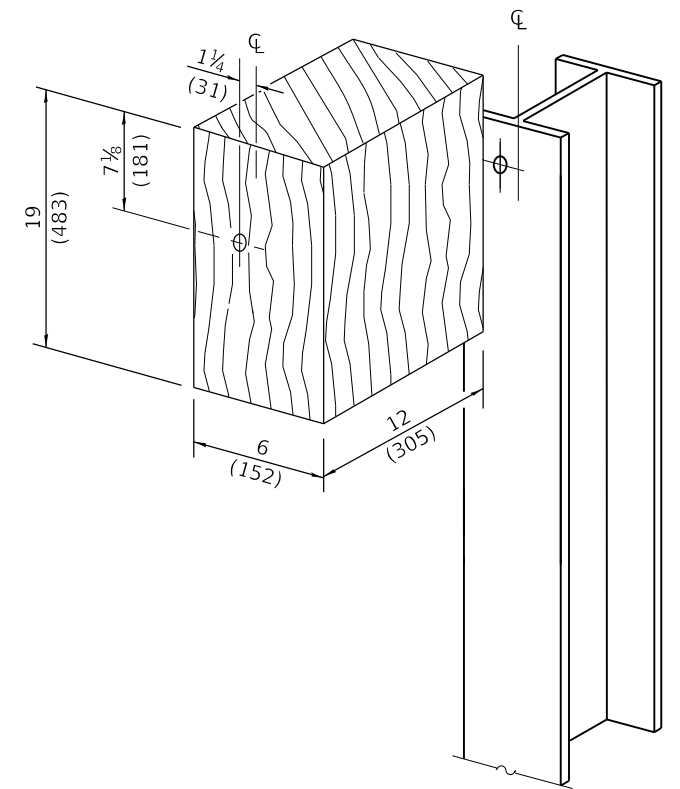
ISSUED 1-1-2022



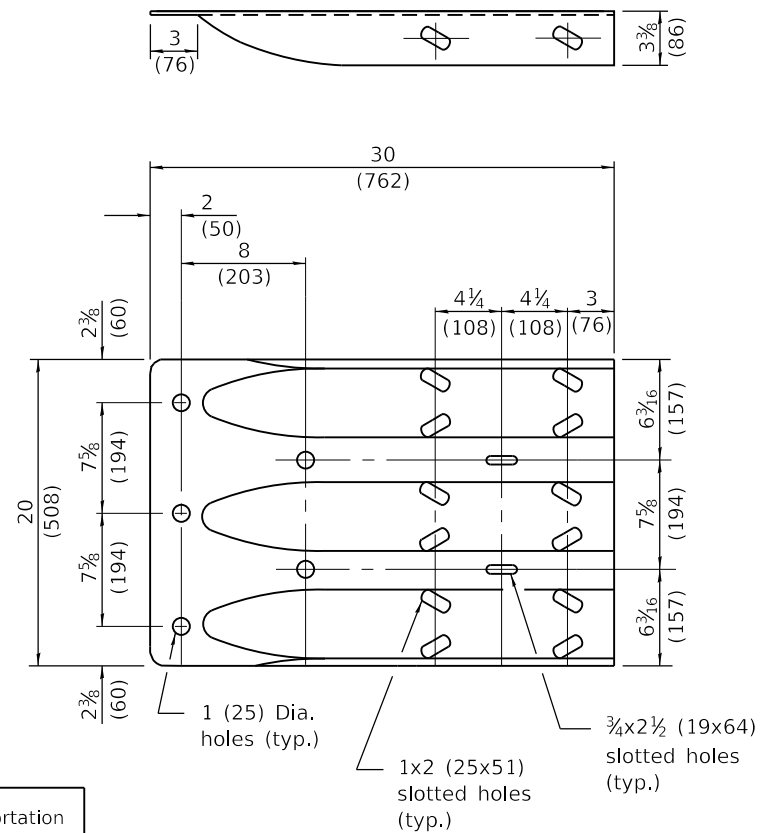
**POSTS 1-3 WOOD BLOCKOUT DETAIL**



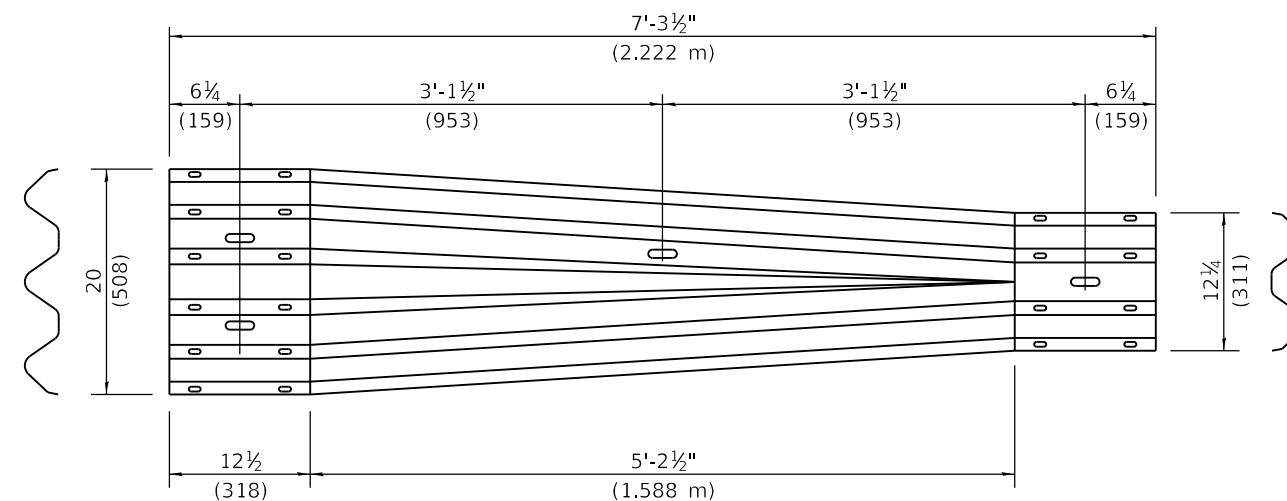
**POSTS 4-8 WOOD BLOCKOUT DETAIL**



**POST 9 WOOD BLOCKOUT DETAIL**



**THRIE BEAM END SHOE DETAIL**



**TRANSITION SECTION**  
(10 gauge (3.4) rail element)

**TRAFFIC BARRIER  
TERMINAL, TYPE 13**

(Sheet 2 of 3)

**STANDARD 631061**

Illinois Department of Transportation

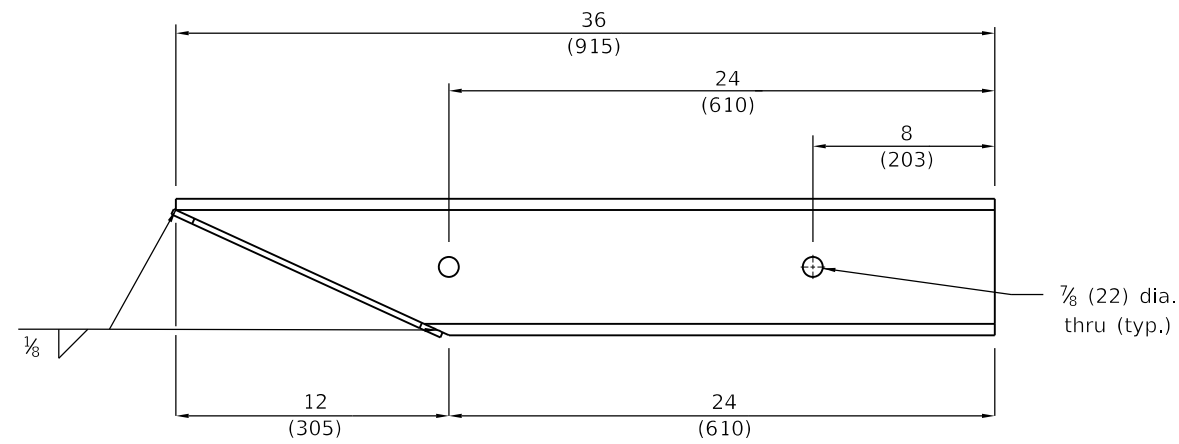
PASSED January 1, 2022

*Michael Beard*  
ENGINEER OF POLICY AND PROCEDURES

APPROVED January 1, 2022

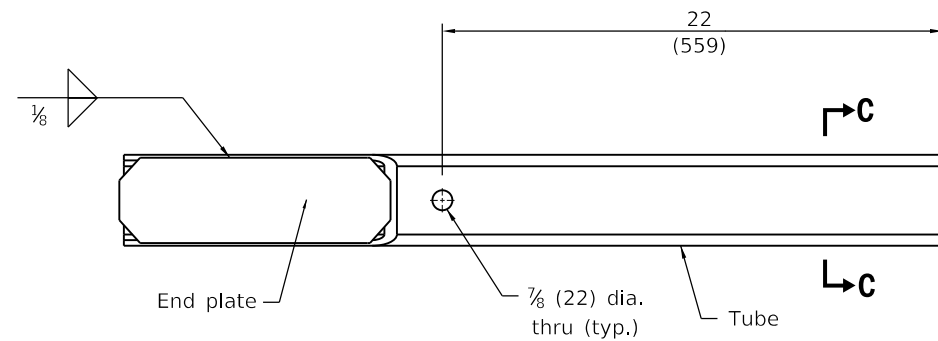
*John C. ...*  
ENGINEER OF DESIGN AND ENVIRONMENT

ISSUED 1-1-2022



**PLAN**

7/8 (22) dia. thru (typ.)

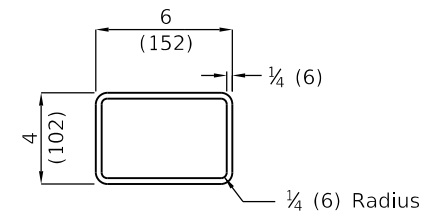


**ELEVATION**

End plate

7/8 (22) dia. thru (typ.)

Tube

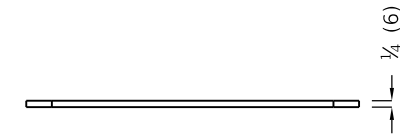


**SECTION C-C**

1/4 (6) Radius



**ELEVATION**

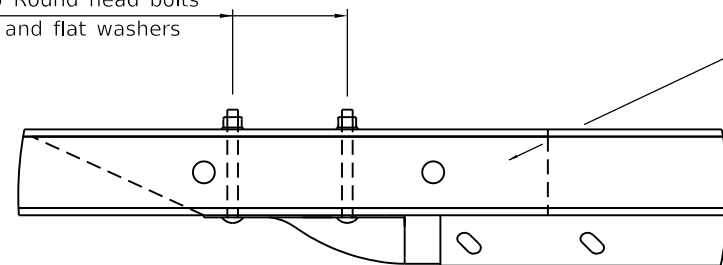


**PLAN**

**ANGLE CUT TUBE ASSEMBLY - END PLATE**

**ANGLE CUT TUBE ASSEMBLY**

5 - 3/4 (19) dia. x 7 1/2 (191) Round head bolts with heavy hex locknuts and flat washers



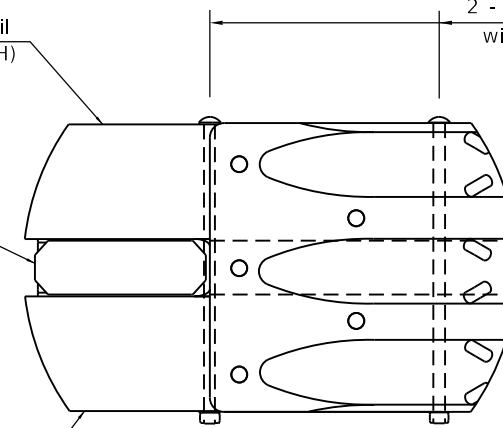
**PLAN**

Middle Transition Rail Assembly (Type IL-OH)

Angle Cut Tube Assembly

Bottom Transition Rail Assembly (Type IL-OH)

2 - 3/4 (19) dia. x 21 (533) Round head bolts with heavy hex locknuts and flat washers



**ELEVATION**

**BRIDGE RAIL CONNECTION DETAIL**

Illinois Department of Transportation

PASSED January 1, 2022  
*Michael Beard*  
 ENGINEER OF POLICY AND PROCEDURES

APPROVED January 1, 2022  
*Scott C. ...*  
 ENGINEER OF DESIGN AND ENVIRONMENT

ISSUED 1-1-2022

**TRAFFIC BARRIER  
 TERMINAL, TYPE 13**

(Sheet 3 of 3)

**STANDARD 631061**