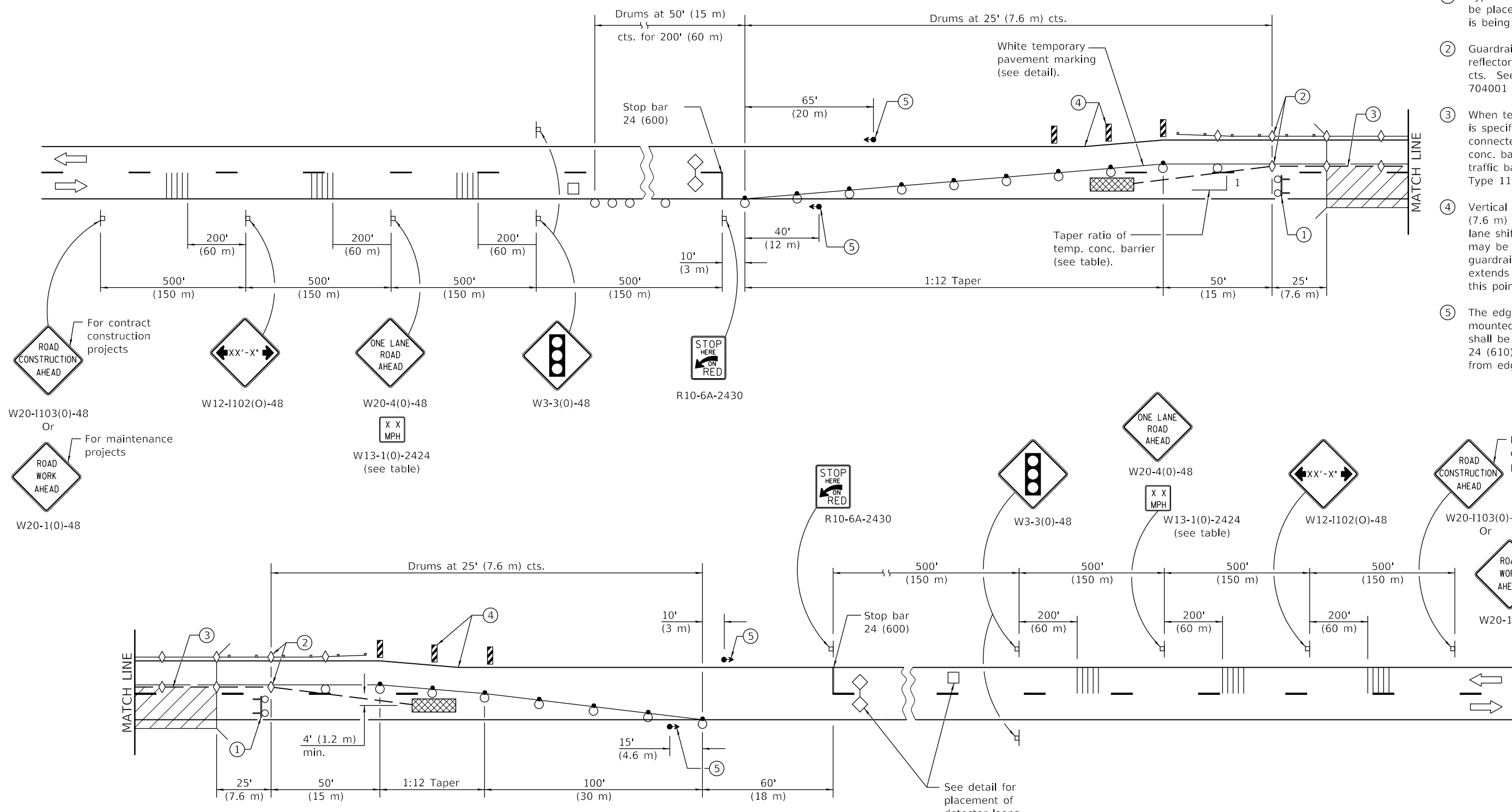


- ① Type III barricade to be placed when no work is being performed.
- ② Guardrail/barrier wall reflectors at 25' (7.6 m) cts. See Standards 704001 & 782006.
- ③ When temp. bridge rail is specified, it shall be connected to the temp. conc. barrier using a traffic barrier terminal Type 11.
- ④ Vertical panels at 25' (7.6 m) cts. throughout lane shift. These devices may be omitted when the guardrail, w/markers, extends to at least this point on the taper.
- ⑤ The edge of the post mounted signal head shall be between 24 (610) and 6' (1.8 m) from edge of shoulder.



SYMBOLS

- Work area
- Sign
- Type III barricade with flashing lights
- Traffic signal
- Detector loops
- Impact attenuator
- Drum with steady burning bi-directional light
- Temporary concrete barrier
- Temporary rumble strip (when specified)
- Double vertical panel (see detail)
- Crystal, bidirectional guardrail/barrier wall reflector
- Drum

See Sheet 2 for GENERAL NOTES

Illinois Department of Transportation

PASSED January 1, 2020
Cynthia Watt
 ENGINEER OF SAFETY PROG. AND ENGINEERING

APPROVED January 1, 2020
J. Ed. Elk
 ENGINEER OF DESIGN AND ENVIRONMENT

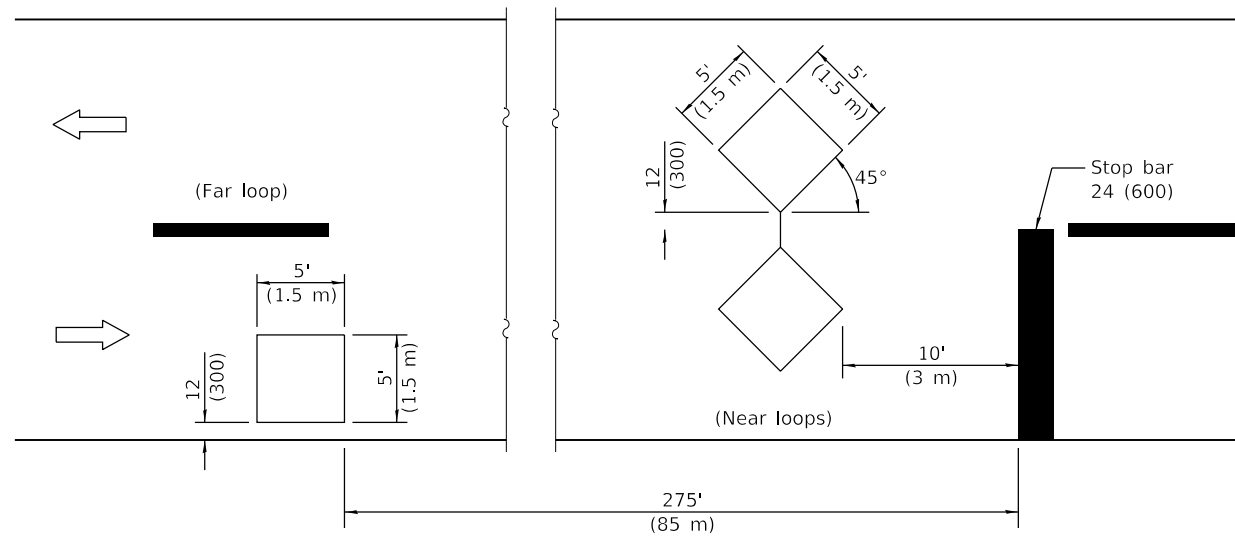
ISSUED 1-1-97

DATE	REVISIONS
1-1-20	Revised from F-shape to constant slope parapet.
1-1-18	Omitted lights in tangents.
1-1-17	Added flashing lights to Type III barricades. Revised note ④.

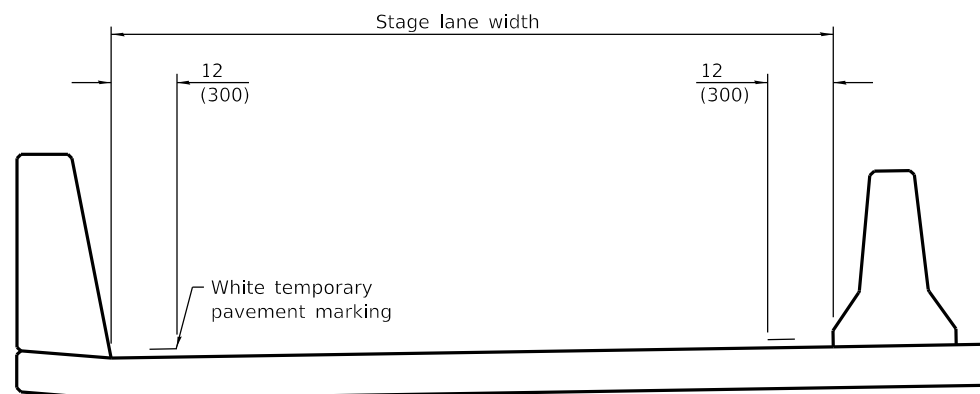
**LANE CLOSURE, 2L, 2W,
BRIDGE REPAIR WITH BARRIER**

(Sheet 1 of 2)

STANDARD 701321-18



DETECTOR LOOPS

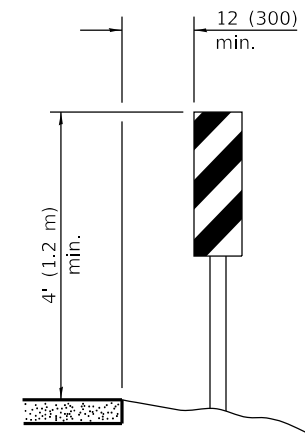


TEMPORARY PAVEMENT MARKING

TRAFFIC SIGNAL SEQUENCE						
PHASE	A			B		
INTERVAL	1	2	3	4	5	6
NORTHBOUND OR EASTBOUND	G	Y	R	R	R	R
SOUTHBOUND OR WESTBOUND	R	R	R	G	Y	R

TEMPORARY CONCRETE BARRIER	
NORMAL POSTED SPEED	TAPER RATIO
40 mph AND ABOVE	12:1
BELOW 40 mph	8:1

ADVISORY SPEED LIMIT	
NORMAL POSTED SPEED	ADVISORY SPEED
55 - 45 mph	40 mph
40 mph	35 mph
35 - 30 mph	30 mph



VERTICAL PANELS

(Post mounted, one each side)

GENERAL NOTES

This Standard is used where, at any time, any vehicle, equipment, workers, or their activities will encroach on one lane of a bridge. Traffic signals and a positive barrier are required.

Traffic signals shall be operational only when all traffic controls are in place. When traffic signals are not in operation, flaggers shall be used and traffic control shall conform to Standard 701201 or 701206.

Temporary concrete barrier shall be according to Standard 704001.

Existing or temporary pavement markings shall be on both sides of open lane from stop bar to stop bar.

All dimensions are in inches (millimeters) unless otherwise shown.

Illinois Department of Transportation

PASSED January 1, 2020

 ENGINEER OF SAFETY PROG. AND ENGINEERING

APPROVED January 1, 2020

 ENGINEER OF DESIGN AND ENVIRONMENT

ISSUED 1-1-97

**LANE CLOSURE, 2L, 2W,
BRIDGE REPAIR WITH BARRIER**

(Sheet 2 of 2)

STANDARD 701321-18