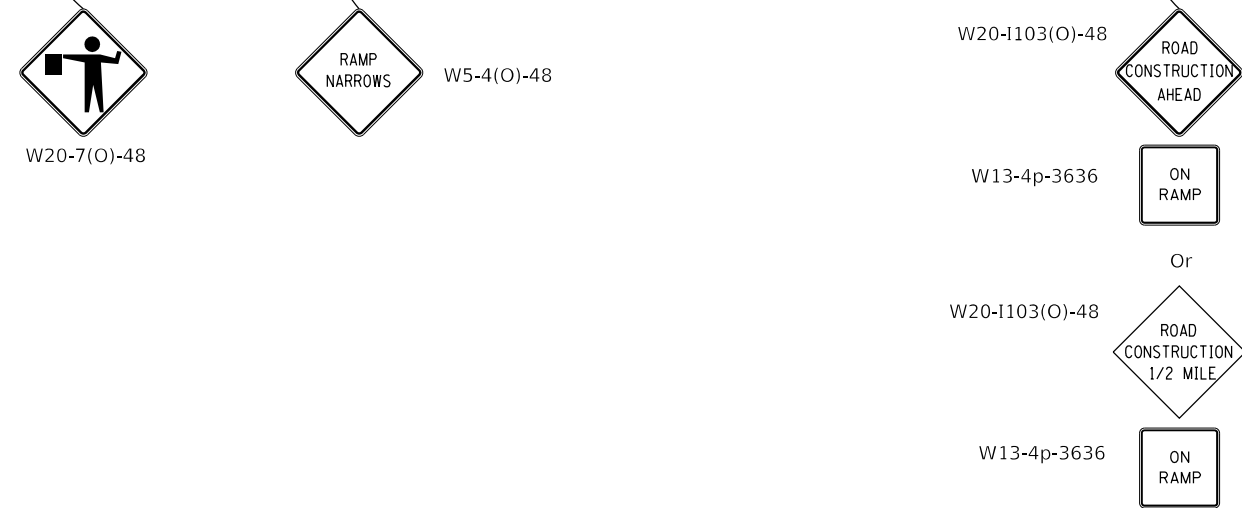
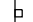







**PARTIAL EXIT RAMP CLOSURE**



**SYMBOLS**

-  Sign
-  Type III barricade with flashing lights
-  Drum with steady burning light
-  Work area
-  Flagger with traffic control sign
-  Drum


All dimensions are in inches (millimeters) unless otherwise shown.

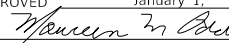
DATE	REVISIONS
1-1-18	Omitted lights on drums in tangent.
1-1-17	Added flashing lights to Type III barricade.

**PARTIAL EXIT RAMP CLOSURE  
FREEWAY / EXPRESSWAY**

**STANDARD 701456-05**

Illinois Department of Transportation

PASSED January 1, 2018  
  
 ENGINEER OF SAFETY PROG. AND ENGINEERING

APPROVED January 1, 2018  
  
 ENGINEER OF DESIGN AND ENVIRONMENT

ISSUED 1-1-09