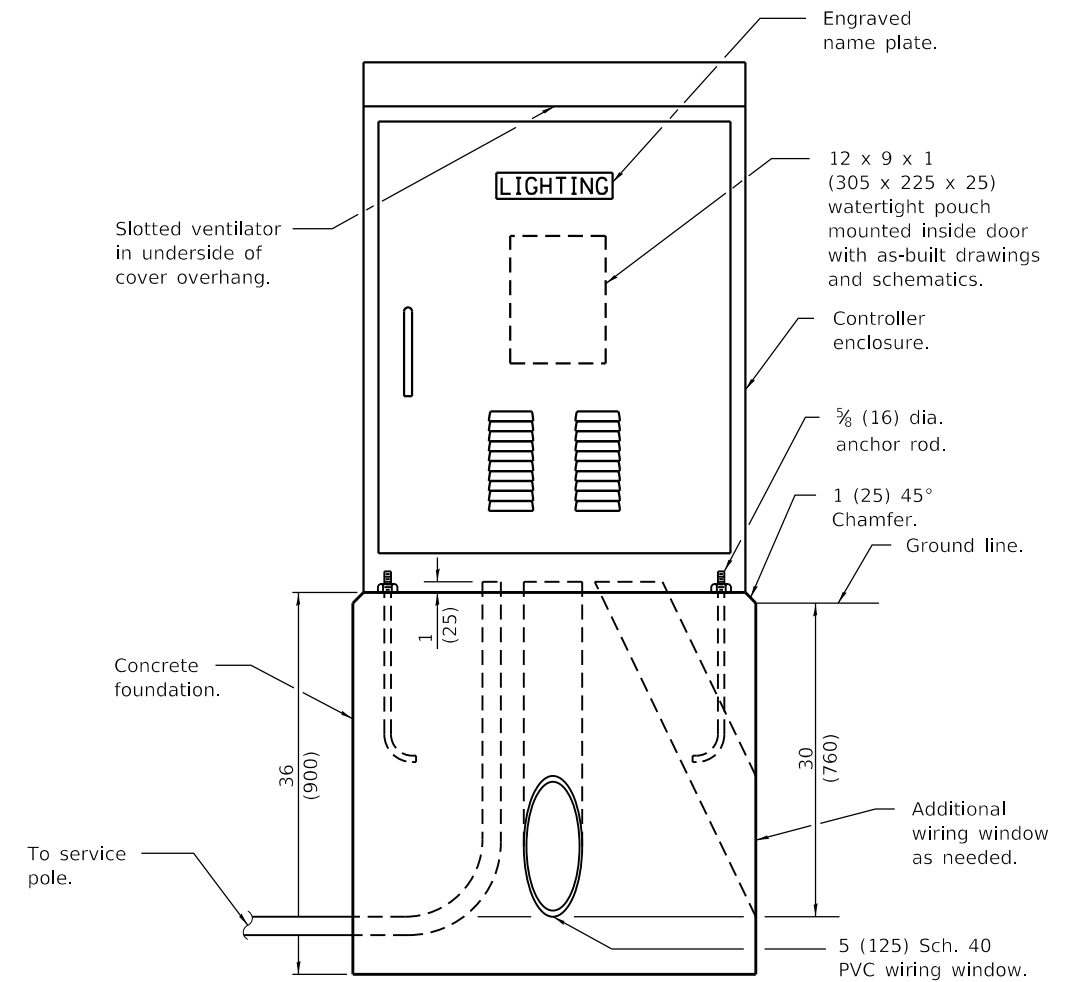


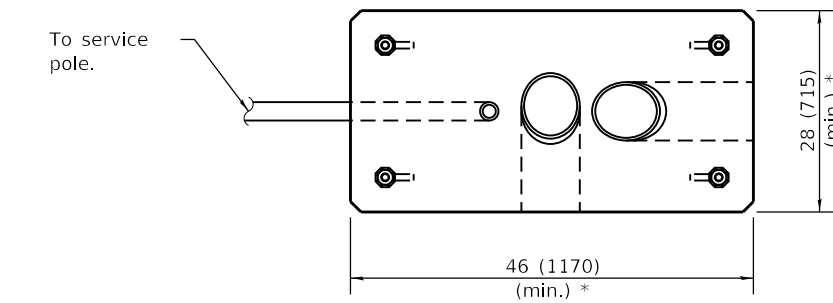
ELECTRIC SERVICE INSTALLATION

(Typical overhead service shown. Cut pole off for underground service and treat cut surface with preservative. Consult utility company standards for exact requirements.)

* Size larger as needed.



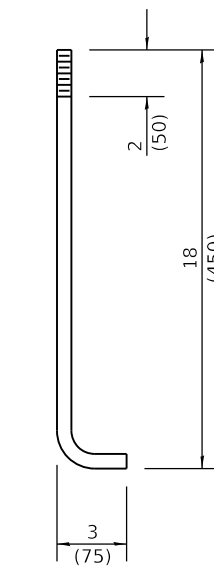
LIGHTING CONTROLLER



FOUNDATION (PLAN)

(Work pad not shown.)

* Size larger as needed.



ANCHOR ROD DETAIL

All dimensions are in inches (millimeters) unless otherwise shown.

DATE	REVISIONS
1-1-22	Replaced "Navigation" with "Obstruction Warning" in std title, note ② and Control Schematic.
1-1-19	Replaced ** note with new note regarding consulting utility company standards for installation.

OBSTRUCTION WARNING
LIGHTING CONTROLLER, 240V
 (Sheet 1 of 2)

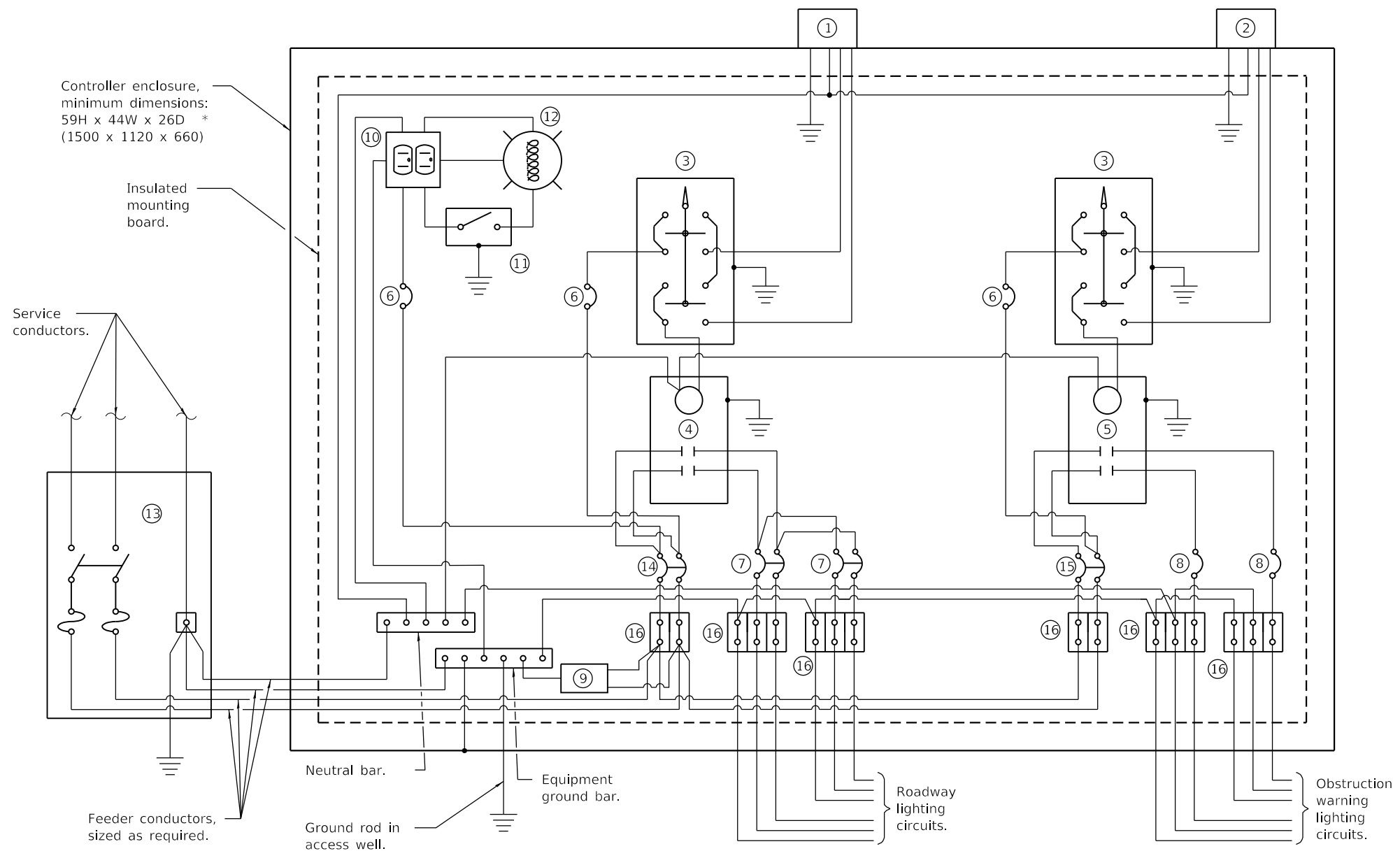
STANDARD 826001-03

Illinois Department of Transportation

PASSED January 1, 2022
Bernard A. Griffin
 ELECTRICAL AND MECHANICAL UNIT CHIEF

APPROVED January 1, 2022
Scott C. Beck
 ENGINEER OF DESIGN AND ENVIRONMENT

ISSUED 1-1-12



- ① Photocell with integral surge arrester for roadway lighting.
- ② Photocell with integral surge arrester for obstruction warning lighting.
- ③ HAND-OFF-AUTO selector switch.
- ④ 100 amp*, electrically held contactor.
- ⑤ 60 amp*, electrically held contactor.
- ⑥ 15 amp, 1-pole circuit breaker.
- ⑦ 20 amp*, 2-pole circuit breaker (two spares required but not shown).
- ⑧ 20 amp*, single-pole circuit breaker (two shown, quantity as required).
- ⑨ Surge arrester.
- ⑩ GFCI duplex receptacle.
- ⑪ Single-pole, single-throw switch.
- ⑫ Incandescent luminaire, enclosed and gasketed with 100 watt lamp.
- ⑬ Service disconnect switch - 2-pole, 3-wire, 100 amp*, fused at 100 amp*, solid neutral in NEMA 4X enclosure having lockable external handle.
- ⑭ 60 amp*, 2-pole circuit breaker.
- ⑮ 30 amp*, 2-pole circuit breaker.
- ⑯ Terminal block sized for conductors as shown on plans.

* Size larger as needed.

CONTROL SCHEMATIC

Illinois Department of Transportation

PASSED January 1, 2022

Bernard Auffen
ELECTRICAL AND MECHANICAL UNIT CHIEF

APPROVED January 1, 2022

Seth Cbe
ENGINEER OF DESIGN AND ENVIRONMENT

ISSUED 1-1-12

**OBSTRUCTION WARNING
LIGHTING CONTROLLER, 240V**
(Sheet 2 of 2)

STANDARD 826001-03