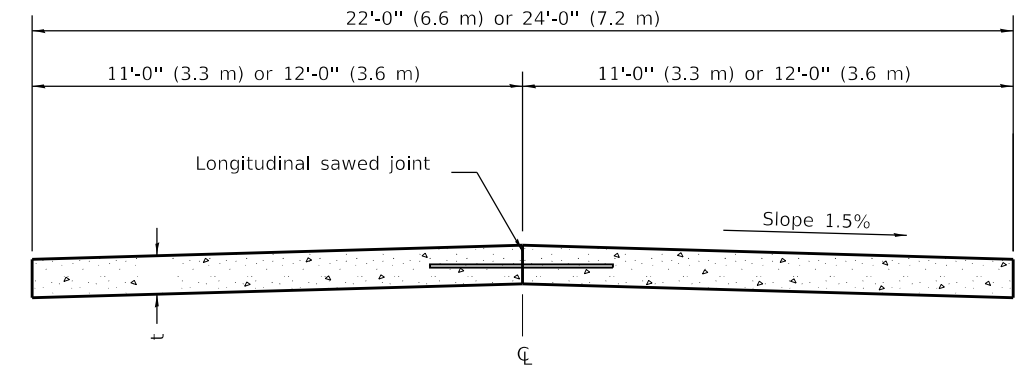


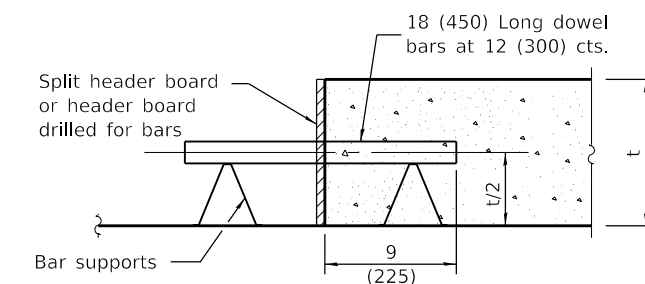
PLAN OF PAVEMENT

Pavement Thickness	Spacing of Transverse Contraction Joints
Less than 10 (250)	12' (3.6 m) *
10 (250) and greater	15' (4.5 m) *

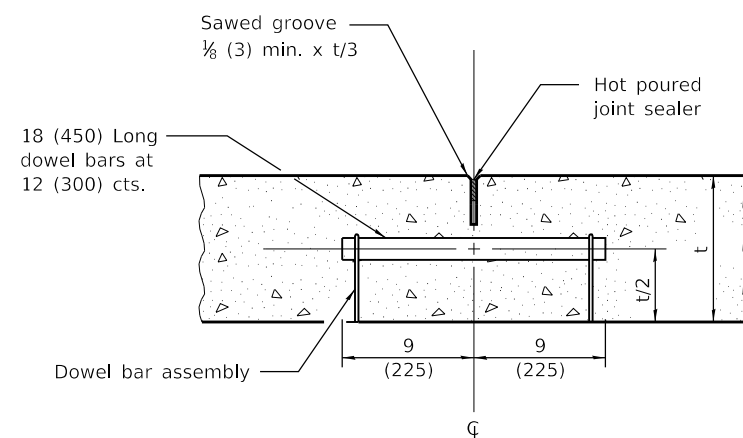
* When placed adjacent to existing PCC pavement, use a spacing between 12' (3.6 m) and 18' (5.5 m) so the joints are in prolongation with existing transverse joints. Also adjust the spacing of tie bars in the longitudinal joint(s) to maintain a clearance of 9 (225) from the end of the dowel bars.



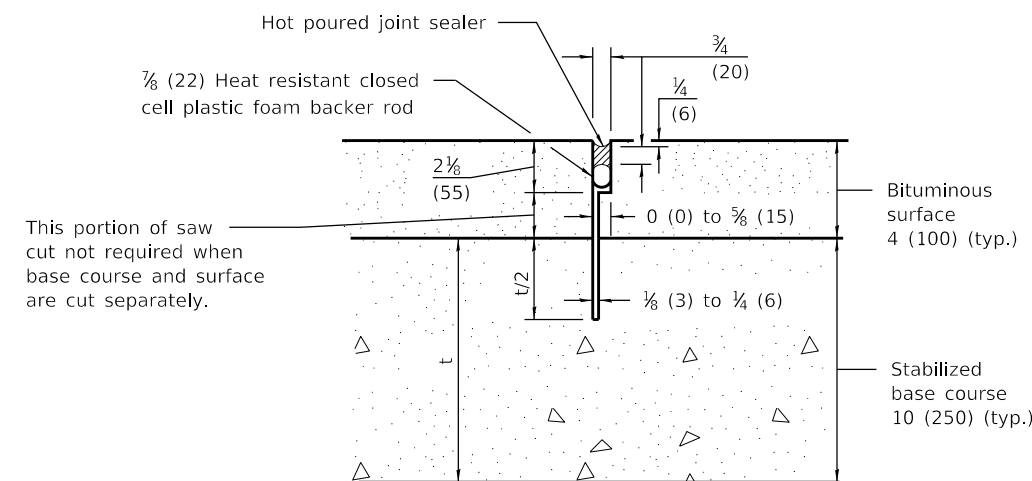
CROSS SECTION OF PAVEMENT



TRANSVERSE CONSTRUCTION JOINT



TRANSVERSE CONTRACTION JOINT



TRANSVERSE CONTRACTION JOINT

(For CAM, CFA and LFA Base Course Mixtures)

GENERAL NOTES

See Standard 420001 for details of Transverse Expansion Joints, Longitudinal Sawed Joints and Longitudinal Construction Joints.

Dowel bars are only required for Class I, II, or III Roads and Streets having pavement thickness of 7 (175) or greater.

t = Pavement thickness (See Typical Cross Section)

All dimensions are in inches (millimeters) unless otherwise shown.

DOWEL BAR TABLE

PAVEMENT THICKNESS	DOWEL BAR DIAMETER
10 (250) and greater	1 1/2 (38)
8.01 (201) to 9.99 (249)	1 1/4 (32)
8 (200) and less	1 (25)

DATE	REVISIONS
1-1-22	Revised spacing of transverse contraction joints, dowel bar table and header board callout.
1-1-18	Revised dowel and tie bar sizes. Increased tie bar spacing.
	Eliminated skewed joint.

PORTLAND CEMENT CONCRETE PAVEMENT (NONREINFORCED)

STANDARD B.L.R. 14-13

Illinois Department of Transportation

PASSED January 1, 2022

ENGINEER OF LOCAL ROADS AND STREETS

APPROVED January 1, 2022

ENGINEER OF DESIGN AND ENVIRONMENT

ISSUED 1-1-97