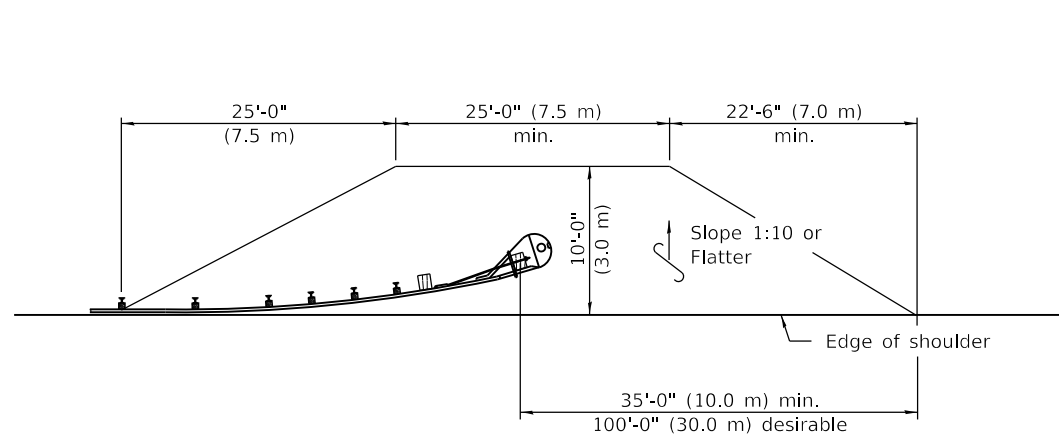
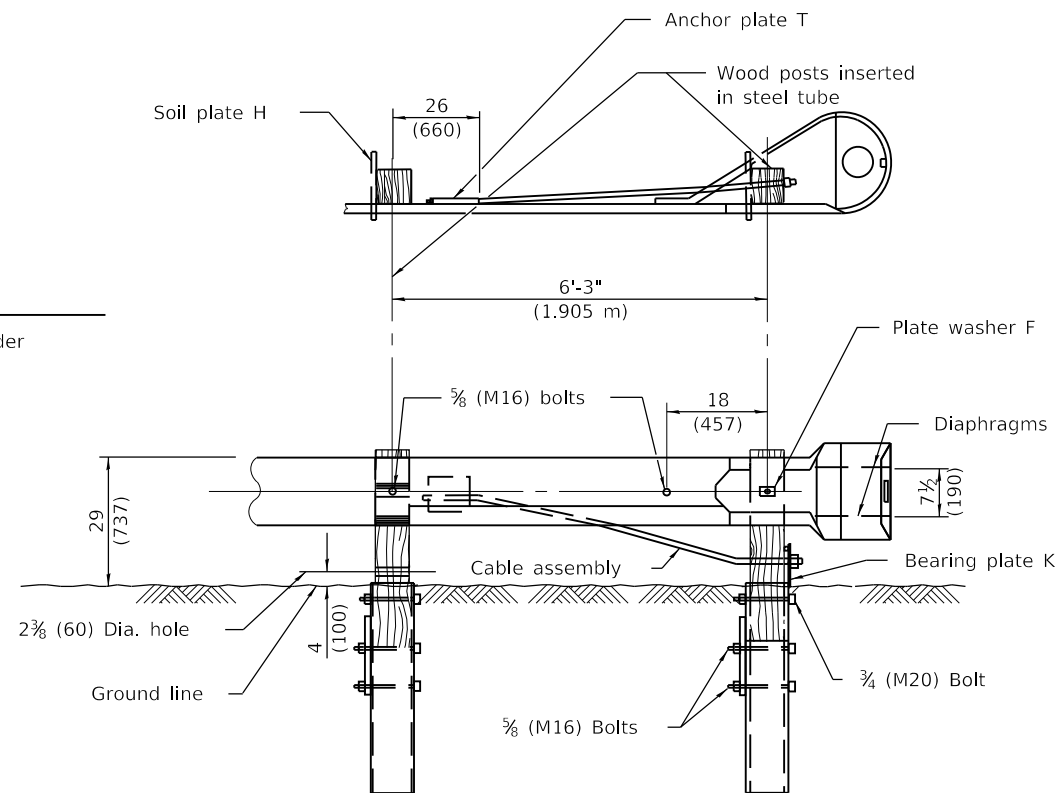


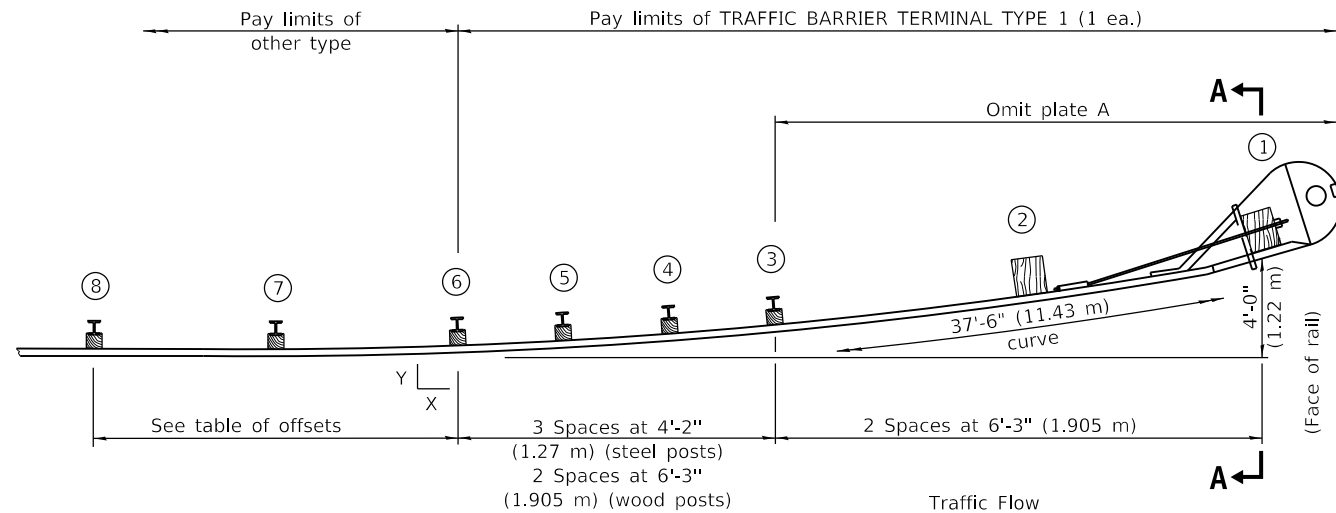
OFFSETS TO FACE OF RAIL		
Post	X ft (m)	Y ft (m)
①	37.22 (11.345)	4.0 (1.22)
②	31.09 (9.475)	2.79 (0.850)
③	24.92 (7.595)	1.79 (0.545)
④	20.79 (6.335)	1.25 (0.380)
⑤	16.64 (5.070)	0.80 (0.245)
⑥	12.49 (3.805)	0.45 (0.135)
⑦	6.25 (1.905)	0.11 (0.035)
⑧	0.00 (0.00)	0.00 (0.00)



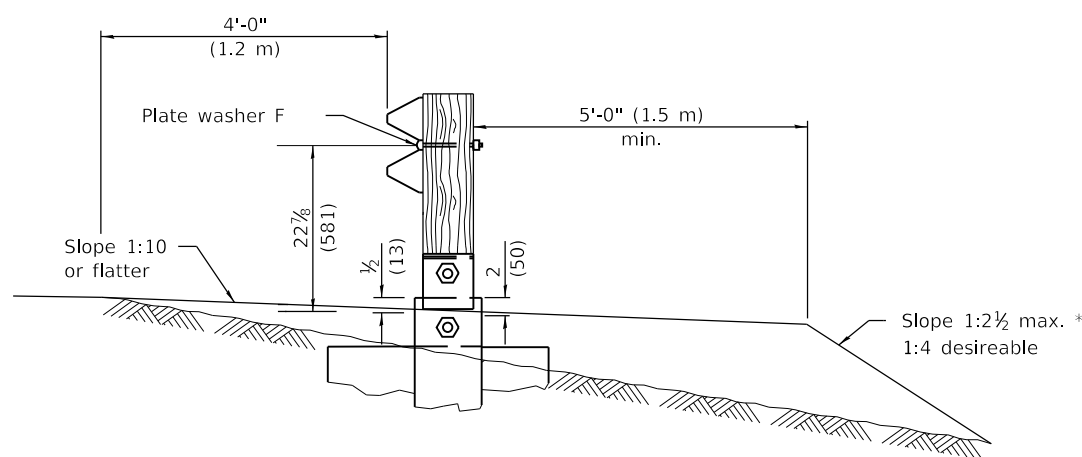
SHOULDER WIDENING TRANSITION



**WOOD BREAKAWAY POSTS
TUBULAR STEEL FOUNDATIONS**



PLAN



SECTION A-A

* If fill height exceeds 5'-0" (1.5 m) use 1:3 max.

GENERAL NOTES

See Standard B.L.R. 26 for details of guardrail not shown.

Posts at location 1 & 2 shall be wood breakaway posts. Posts other than 1 & 2 may be either standard wood posts or steel posts, at the option of the Contractor. If standard wood posts are used, one post shall be located midway between and in lieu of posts 4 & 5. The offset (Y) for this post shall be 12 (300).

A two-piece assembly may be substituted for the one piece nose shown above.

The bearing plate K shall be held in position by (2) two eightpenny nails driven into the post and bent over the top of the plate.

When this terminal is used with Standard 630001, the guardrail shall transition down to the height of the terminal prior to post 8.

All slope ratios are expressed as units of vertical displacement to units of horizontal displacement (V:H).

All dimensions are in inches (millimeters) unless otherwise shown.

DATE	REVISIONS
1-1-12	Revised barrier terminal height and wood breakaway post.
1-1-09	Switched units to English (metric).

**TRAFFIC BARRIER
TERMINAL TYPE 1**

(Sheet 1 of 2)

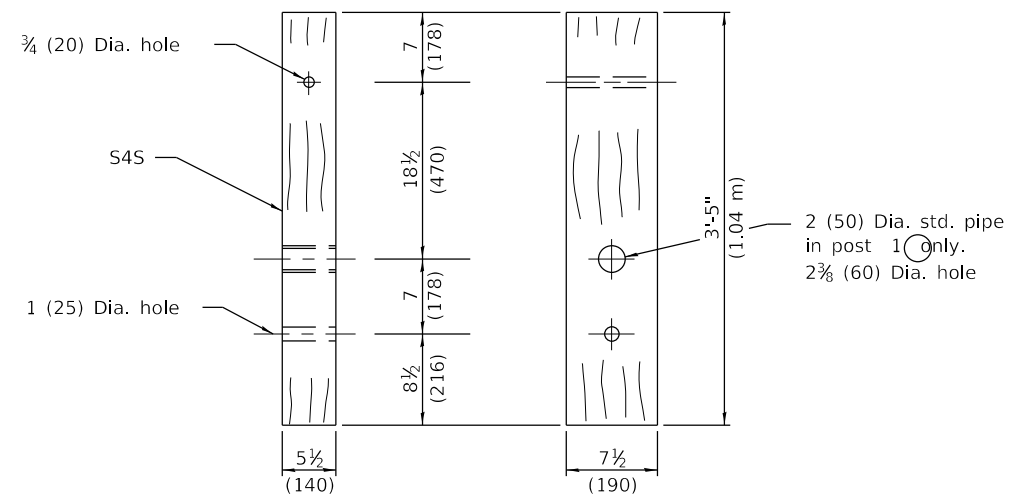
STANDARD B.L.R. 23-4

Illinois Department of Transportation

PASSED January 1, 2012
Donell Lewis
 ENGINEER OF LOCAL ROADS AND STREETS

APPROVED January 1, 2012
Scott Esch
 ENGINEER OF DESIGN AND ENVIRONMENT

ISSUED 1-1-08



WOOD BREAKAWAY POST
(2 ea.)

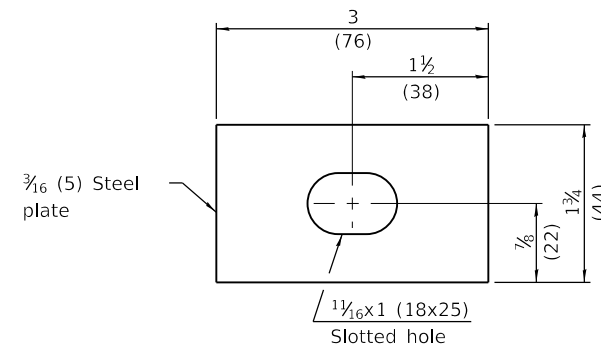
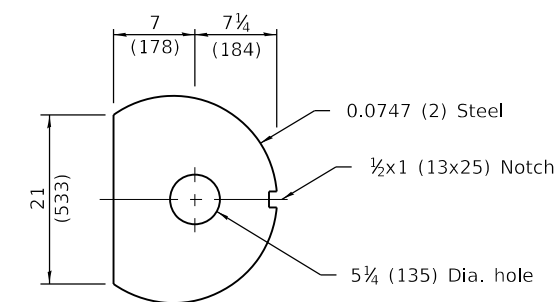
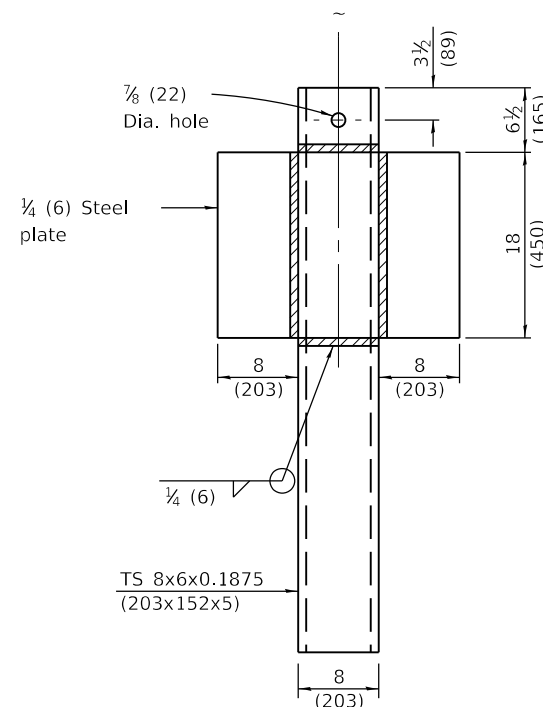


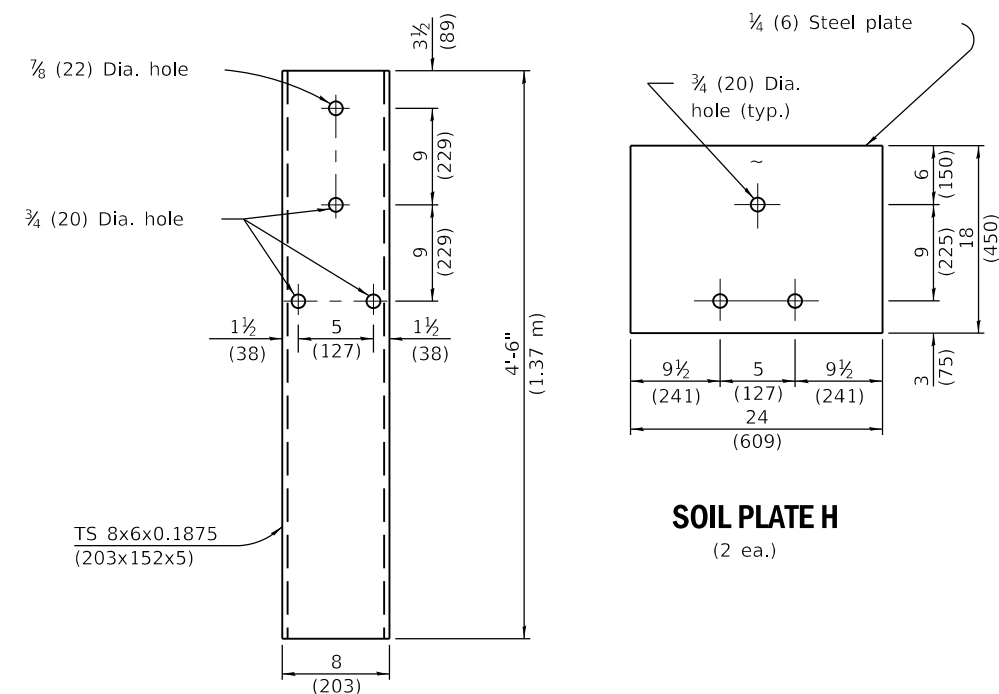
PLATE WASHER F
(1 ea.)



DIAPHRAGM
(2 ea.)

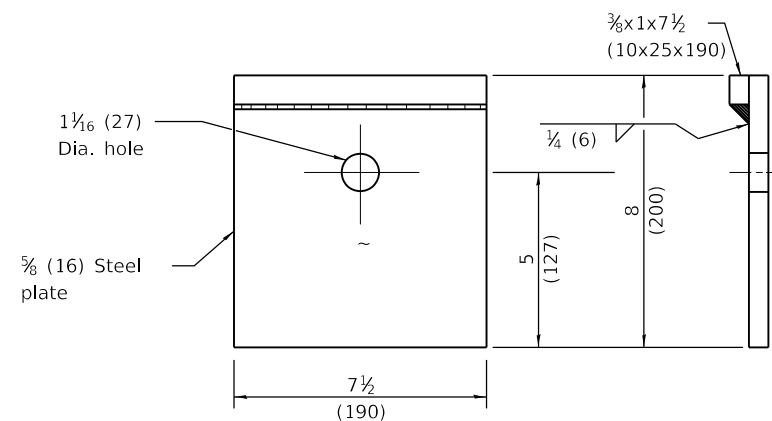


ALTERNATE SOIL PLATE CONNECTION

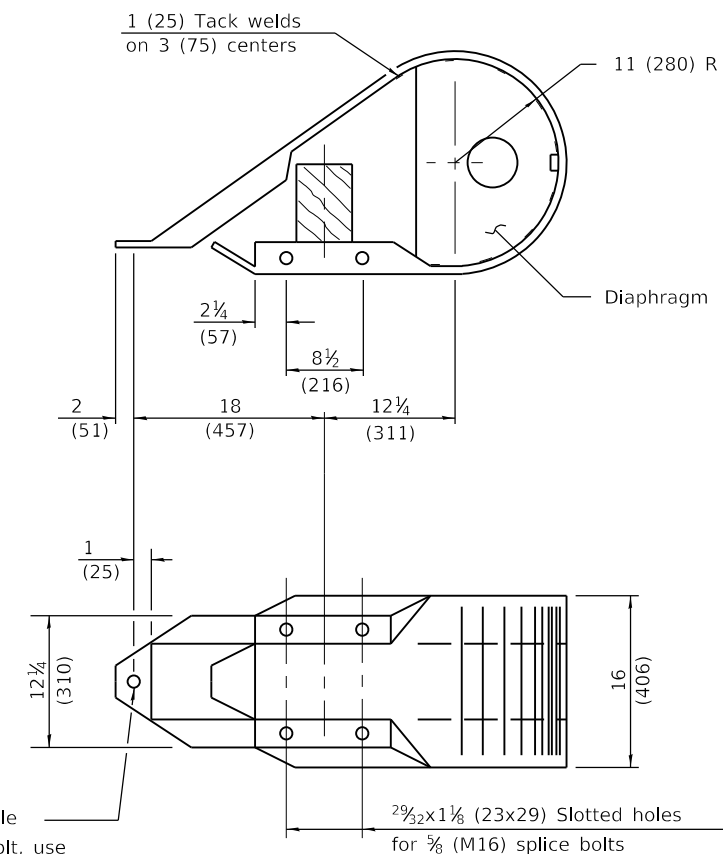


STEEL TUBE
(2 ea.)

SOIL PLATE H
(2 ea.)



BEARING PLATE K
(1 ea.)



NOSE
(1 ea.)