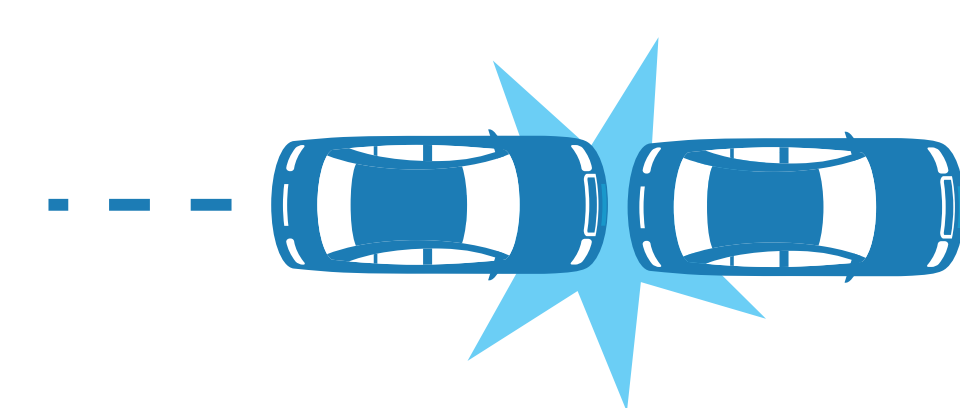


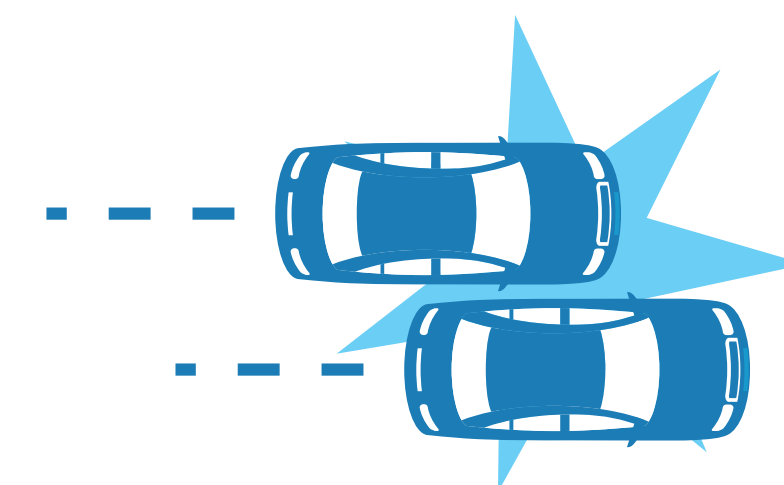
# IL 176 AT NISH ROAD CRASH DATA

## (2009 - 2014)

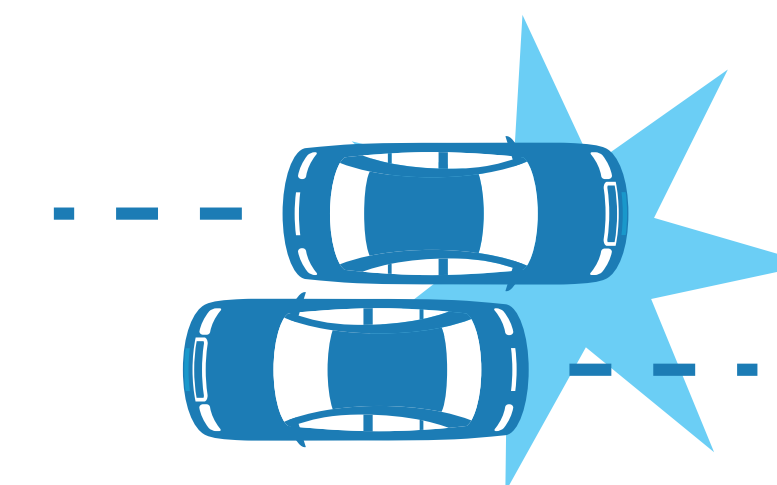
Crash Type	Number of Crashes	Injury Type				Fatalities (K)	Total Injury Crashes
		A	B	C	O		
Turning	9	0	1	1	7	0	2
Rear End	10	0	1	2	7	0	3
Head On	2	0	2	0	0	0	2
Fixed Object	2	0	1	0	1	0	1
Sideswipe Same Direction	1	0	0	0	1	0	0
Sideswipe Opposite Direction	1	0	1	0	0	0	1
Other Non-Collision	1	0	0	0	1	0	0
<b>Total</b>	<b>26</b>	<b>0</b>	<b>6</b>	<b>3</b>	<b>17</b>	<b>0</b>	<b>9</b>



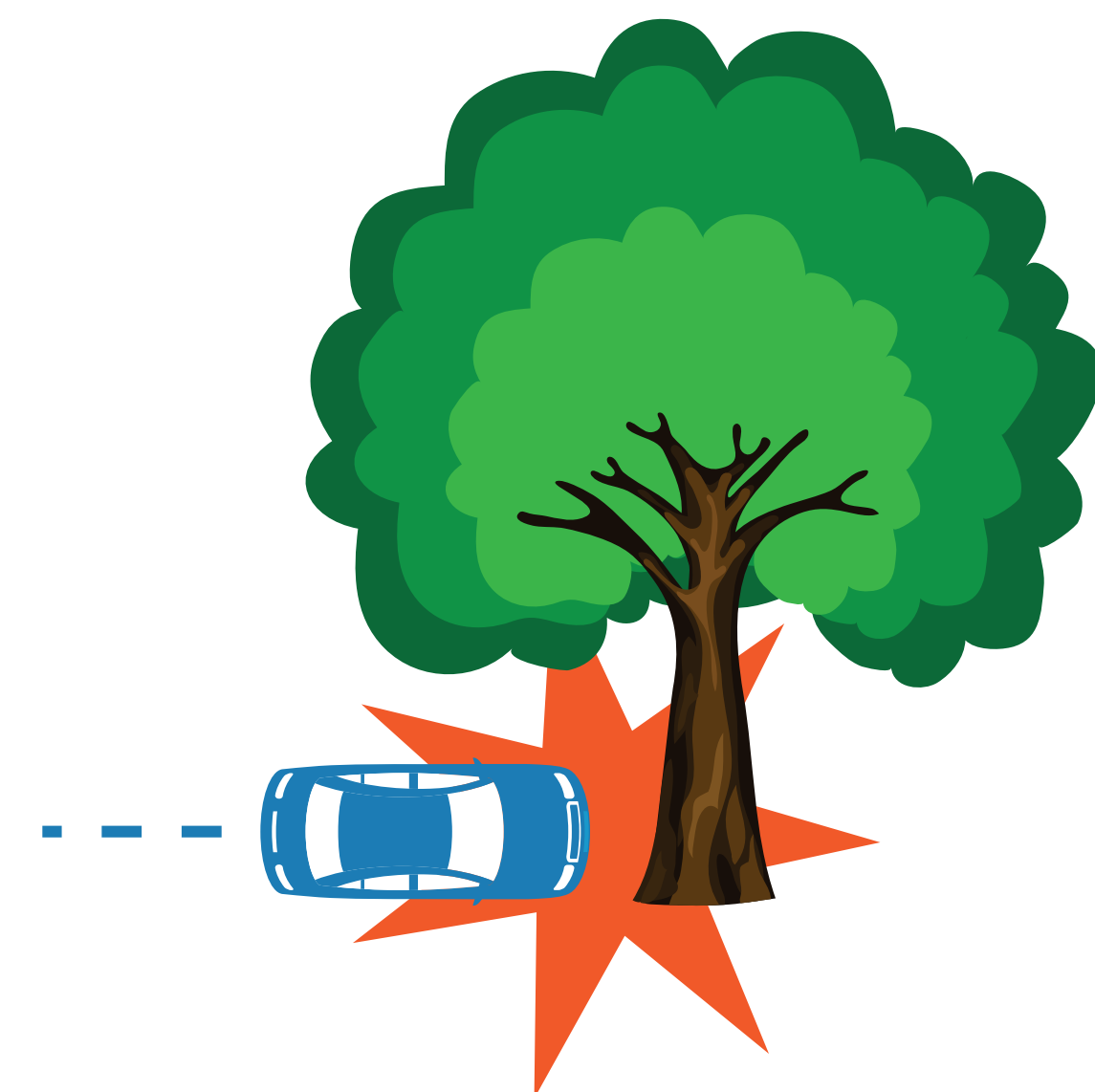
Rear End



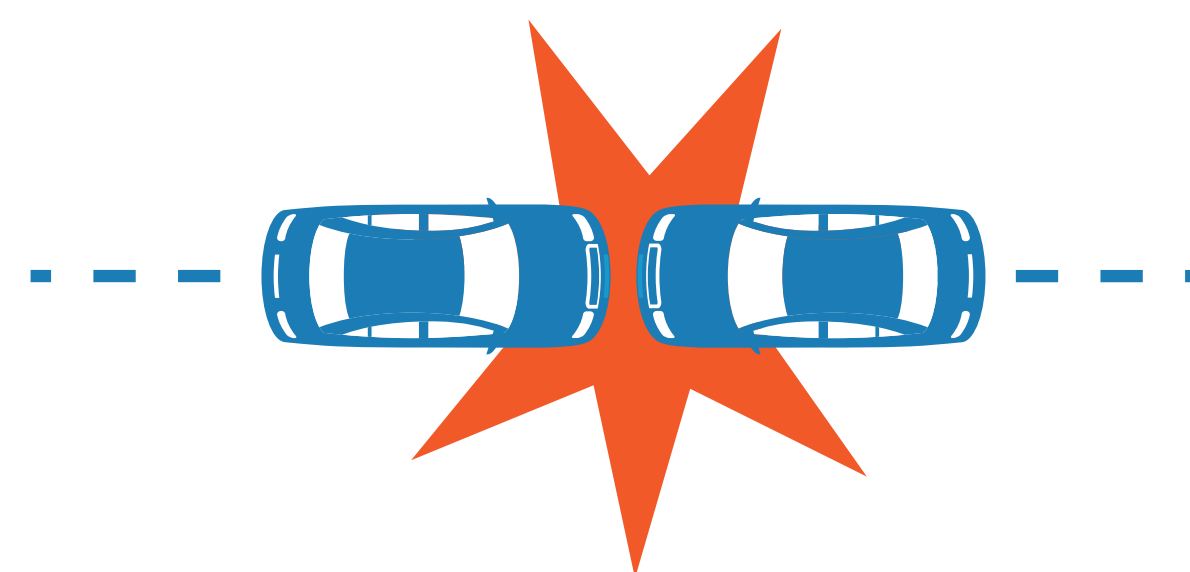
Sideswipe,  
Same Direction



Sideswipe,  
Opposite Direction



Fixed Object



Head On



Turning

Code	Severity	Injury Description
K	Fatal	Any injury that results in death within 30 days of crash occurrence
A	Incapacitating	Any injury other than a fatal injury which prevents the injured person from walking, driving, or normally continuing the activities the person was capable of performing before the injury occurred
B	Injury Evident	Any injury other than a fatal injury or an incapacitating injury that is evident to observers at the scene of the crash in which the injury occurred
C	Injury Possible	Any injury reported that is not a fatal, incapacitating, or non-incapacitating evident injury
O	Property Damage Only	Damage to property that reduces its monetary value