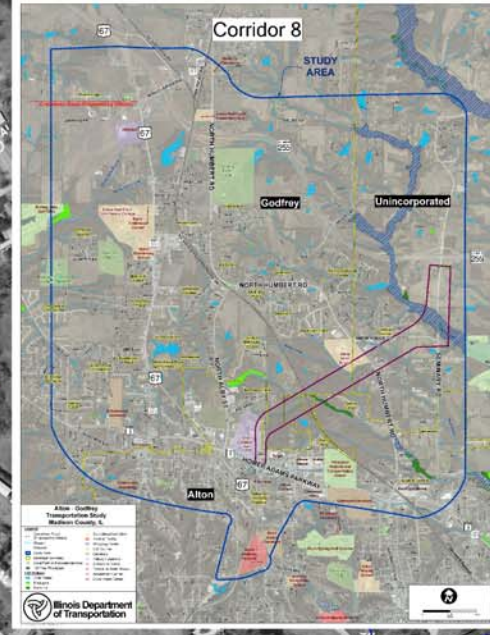
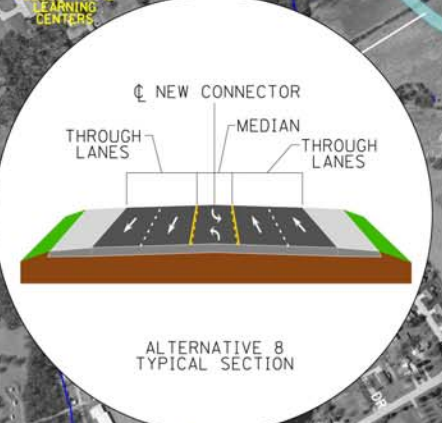
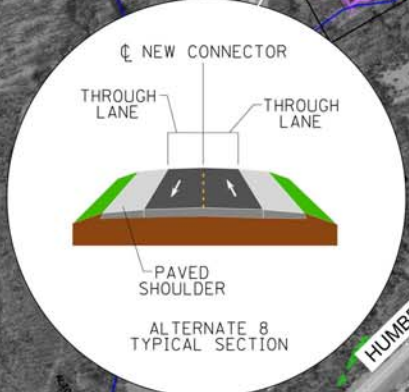
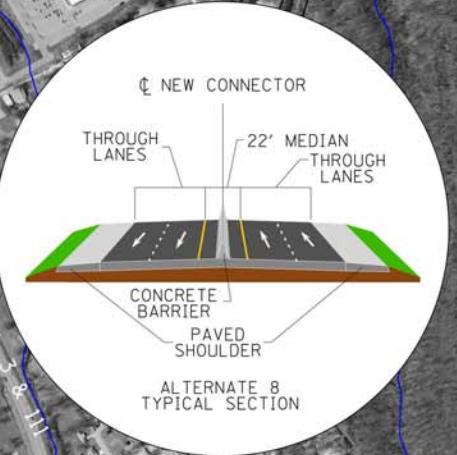
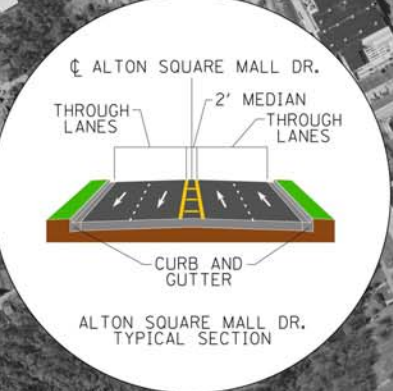
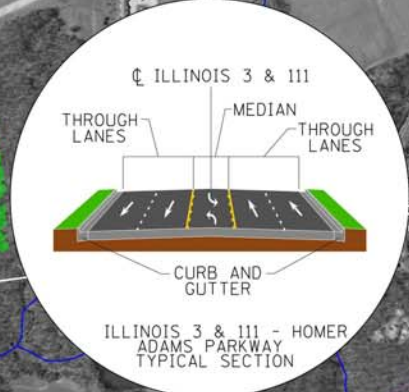
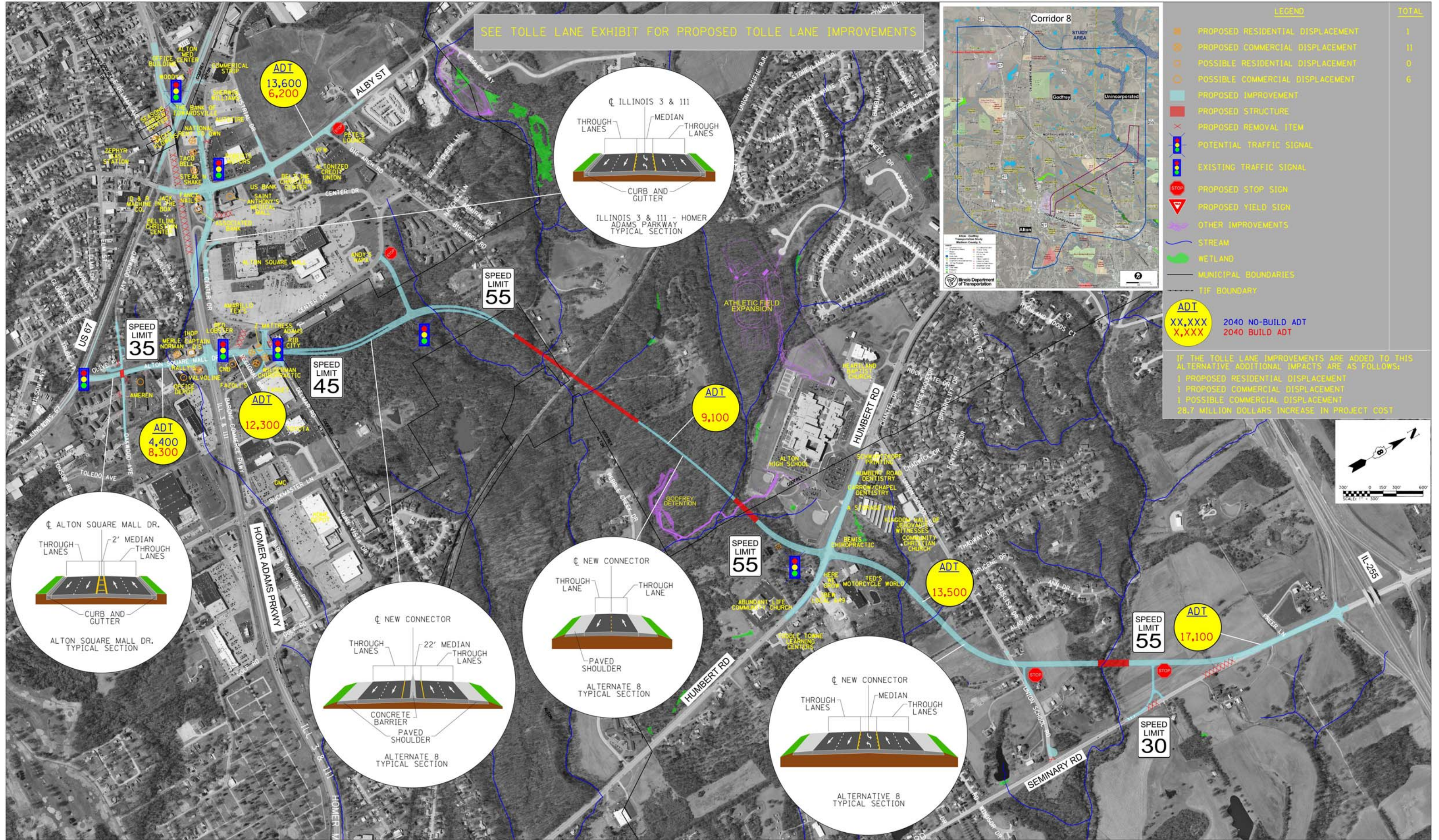
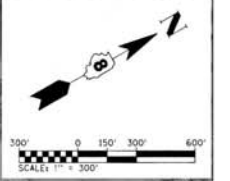


SEE TOLLE LANE EXHIBIT FOR PROPOSED TOLLE LANE IMPROVEMENTS



LEGEND		TOTAL
	PROPOSED RESIDENTIAL DISPLACEMENT	1
	PROPOSED COMMERCIAL DISPLACEMENT	11
	POSSIBLE RESIDENTIAL DISPLACEMENT	0
	POSSIBLE COMMERCIAL DISPLACEMENT	6
	PROPOSED IMPROVEMENT	
	PROPOSED STRUCTURE	
	PROPOSED REMOVAL ITEM	
	POTENTIAL TRAFFIC SIGNAL	
	EXISTING TRAFFIC SIGNAL	
	PROPOSED STOP SIGN	
	PROPOSED YIELD SIGN	
	OTHER IMPROVEMENTS	
	STREAM	
	WETLAND	
	MUNICIPAL BOUNDARIES	
	TIF BOUNDARY	
ADT XX,XXX X,XXX	2040 NO-BUILD ADT 2040 BUILD ADT	

IF THE TOLLE LANE IMPROVEMENTS ARE ADDED TO THIS ALTERNATIVE ADDITIONAL IMPACTS ARE AS FOLLOWS:
 1 PROPOSED RESIDENTIAL DISPLACEMENT
 1 PROPOSED COMMERCIAL DISPLACEMENT
 1 POSSIBLE COMMERCIAL DISPLACEMENT
 28.7 MILLION DOLLARS INCREASE IN PROJECT COST



FILE NAME =	USER NAME = #USER#	DESIGNED -	REVISED -
#FILE.L#		DRAWN -	REVISED -
	PLOT SCALE = #SCALE#	CHECKED -	REVISED -
#MODELNAME#	PLOT DATE = 11/15/2014	DATE -	REVISED -

STATE OF ILLINOIS
DEPARTMENT OF TRANSPORTATION

ALTERNATE 8
IL 3 /US 67 TO SEMINARY
SCALE: 1"=300' SHEET OF SHEETS STA. TO STA.

F.A. RTE.	SECTION	COUNTY	TOTAL SHEETS	SHEET NO.
CONTRACT NO.				
ILLINOIS FED. AID PROJECT				