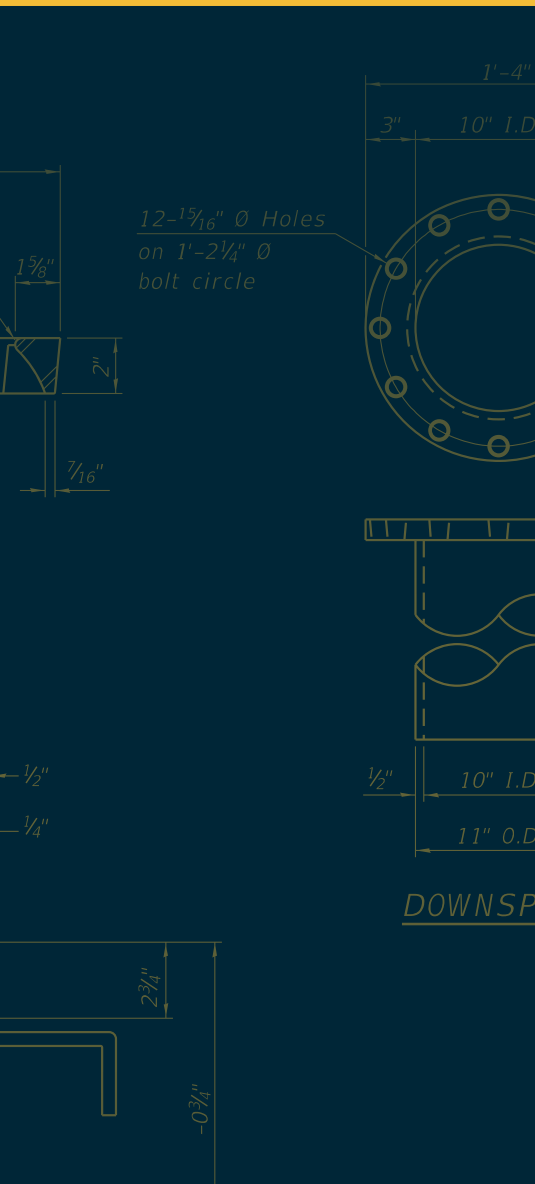




CLARE DIETZ

Civil Engineer



Q. How did you become interested in engineering?

A. I liked math and science classes when I was in school. I loved looking at the interchange ramps in Chicago, where the ramps weave in and out and over traffic.

Q. What aspect of engineering are you focused on at IDOT?

A. I am focused on construction engineering.

Q. Favorite part of the job?

A. I like when I discover something new. Projects can be similar, but each one always has a unique twist. It's fun to learn why some construction or design approaches are different on projects due to variables at play. I can then apply lessons learned the next time I see something similar.

Q. What do you do in a typical day?

A. A typical day involves reviewing the contractor's work. That means measuring their work not just to check it, but to calculate payments, look ahead in plans to anticipate issues or questions, and answer questions or address issues the contractor has about the plans.

Q. How much does teamwork play a role in your day-to-day activities?

A. Teamwork is a huge part of our job. Working alone makes tasks harder, especially since a lot of our tasks require more than one person! There's always someone who's worked on a similar project or task that you can ask for help and learn from.

Q. One thing you'd like the public to know about the work of an IDOT engineer?

A. The slower speed limit in a construction zone is not just for the safety of construction workers!

EWEEK 2022

See all of our Engineers Week features at [idot.click/Eweek2022](https://www.idot.click/Eweek2022).

