



# MICHAEL SPANBERGER II

Geometrics Engineer

## **Q. How did you become interested in engineering?**

**A.** As a kid, I was always in awe of architecture and infrastructure. The Arch, the stadiums and the river bridges. I remember family drives to Grafton on the Great River Road, and fishing beneath the Carlyle Dam. I knew I wanted to be a builder when I got older. In high school, I attended drafting classes and decided to pursue a future in engineering. I chose civil engineering because it offers the chance to work on regional and local projects. Furthermore, growing up in a steel town, I knew the pride of producing a physical product. At IDOT, we produce a real physical product that benefits millions of people every day.

## **Q. What aspect of engineering are you focused on at IDOT?**

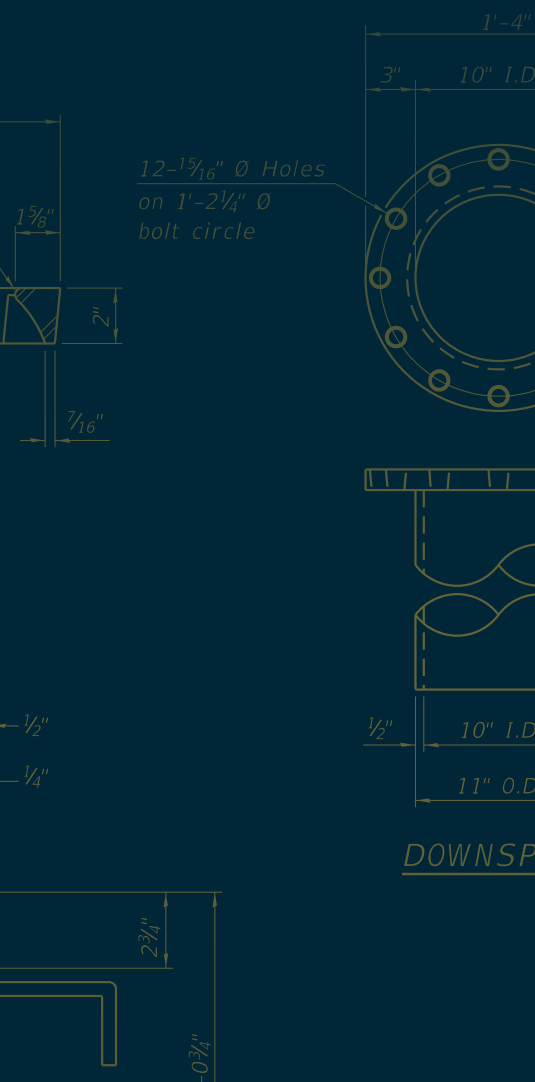
**A.** The geometrics unit primarily works on phase I preliminary plans and traffic studies. We are focused on intersection design, interchange design and traffic analysis.

## **Q. How much does teamwork play a role in your day-to-day activities?**

**A.** Teamwork is critical to leveraging IDOT's institutional knowledge base. At an agency as large as IDOT, we have folks who specialize in construction, traffic, hydraulics, etc. Teamwork allows for complex projects to be effectively delegated according to each team member's strengths and specialties.

## **Q. One thing you'd like the public to know about the work of an IDOT engineer?**

**A.** Every project involves many stakeholders and constraints, much like a puzzle with many pieces. It is our job to assemble those pieces into a product that improves your safety and quality of life. From concept to ribbon-cutting, we strive for projects that the citizens of Illinois can be proud of.



# EWEEK 2022

See all of our Engineers Week features  
at [idot.click/Eweek2022](https://www.idot.gov/engweek2022).

