

SHELBY WILLIAMS

Civil Engineer Trainee Inspector

Q. How did you become interested in engineering?

A. Growing up, I was always building things and creating new inventions. I knew I was going to be an engineer. I just did not know what field I was going to pursue.

Q. What aspect of engineering are you focused on at IDOT?

A. I'm currently in design which creates the plans for construction. I like design because it helps give me a better understanding of construction. I plan on transitioning to construction and having this experience will make the transition a lot easier.

Q. Favorite part of the job?

A. I like being outside and doing field inspections. Once the plans are complete, we have to go to the work site and be sure the plans are correctly designed. Sometimes we have to make changes based on our field inspections.

Q. What do you do in a typical day?

A. As a new employee, I am still learning all the aspects of the job. Currently, I am working with programs such as MicroStation, CAD software and, at times, the GIS database. I check for comments for final plans and update them as needed. I am also working on labeling new projects.

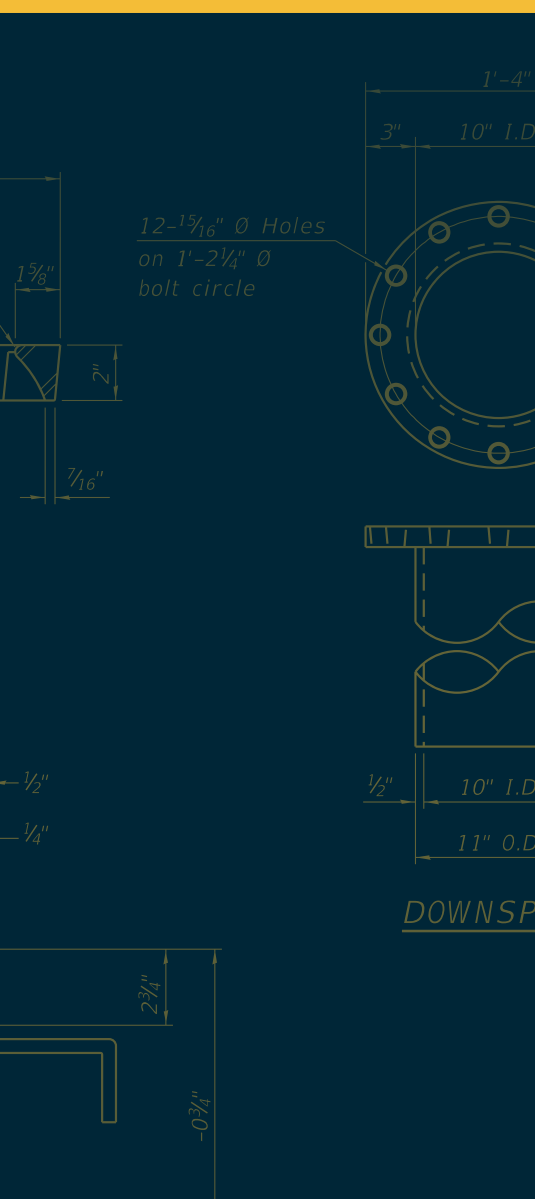
Q. How much does teamwork play a role in your day-to-day activities?

A. It plays a really big role. With every assignment, whether it is mine or my co-workers', we review each other's work to make sure we avoid errors. This is an important aspect to be sure that our work meets IDOT's high standards.

Q. What made you decide to work for IDOT and stay in your hometown of Springfield?

A. My past three internships made me realize that I wanted to work at IDOT. I loved every internship that I had. After my final one, I knew I wanted to work for IDOT and applied for multiple positions. Working for IDOT also allowed me the opportunity to stay close to my family.

See all of our Engineers Week features at [idot.click/Eweek2022](https://www.idot.click/Eweek2022).



EWEEK 2022