

# Statewide Planning and Research Funds

## Call for Projects SFY23

Illinois Department of Transportation

March 16, 2022



# Source of Funding

- SPR funds are a set-a-side from federal transportation funds
- Federal funds require 20% match
  - State match can be provided in some instances
- Approximately \$10 million is available
- No project size limit (> 100K average 400K)
- Multiple years of funding can be awarded

# Eligibility of Funds

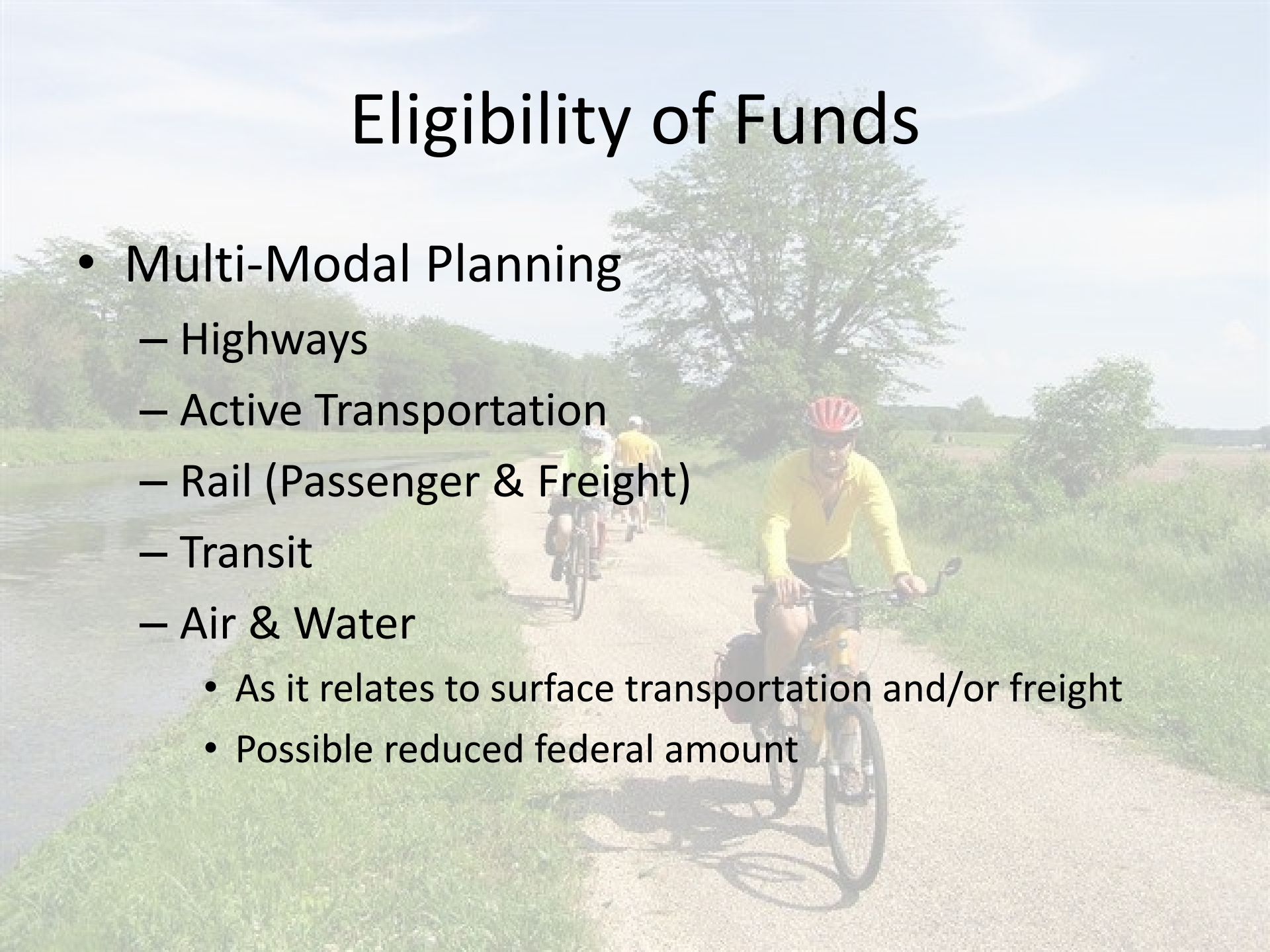
- Planning studies
- Data purchase, collection, and/or analysis
- Program development activities
- Performance management activities
- Coordination/outreach activities
- Software



Engineering,  
Construction, or  
Maintenance

# Eligibility of Funds

- Multi-Modal Planning
  - Highways
  - Active Transportation
  - Rail (Passenger & Freight)
  - Transit
  - Air & Water
    - As it relates to surface transportation and/or freight
    - Possible reduced federal amount



# Who Can Apply?

## Governmental Agencies

- ✓ IDOT
- ✓ Other State Agencies
- ✓ Counties
- ✓ Municipalities
- ✓ Metropolitan Planning Organizations
- ✓ Governmental Councils
- ✓ Park Districts
- ✓ Forest Preserve Districts

Private Entities and Not-for-Profits must have a public sponsor.



# What can you do with the funds?

Support Internal Agency Staff

Hire a Consultant for Assistance\*

Purchase Data\*

Purchase Equipment\*

Purchase Software\*

\*Must follow federal and state procurement rules.





# Example Projects

Illinois 92 Corridor Study

Illinois Quad Cities

Sangamon County

Regional Travel Model Update

LEAM/REIM Model

# ILLINOIS 92 CORRIDOR STUDY ILLINOIS QUAD CITIES

Application and Study Management Process

Bi-State Regional Commission

Illinois Statewide Planning and Research Program

March 16, 2022



# ILLINOIS 92 CORRIDOR- WHY?

Downtowns' Revitalization

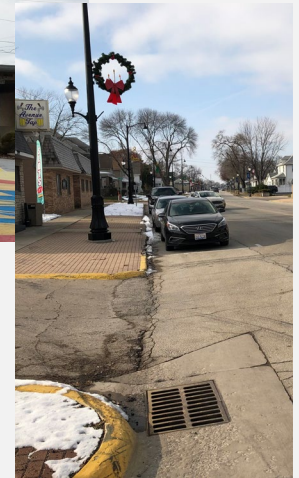
East-West Connectivity

Multi-Modal Corridor

Long Range Plan Transit Priority  
Corridor

Complete Streets Priority Corridor

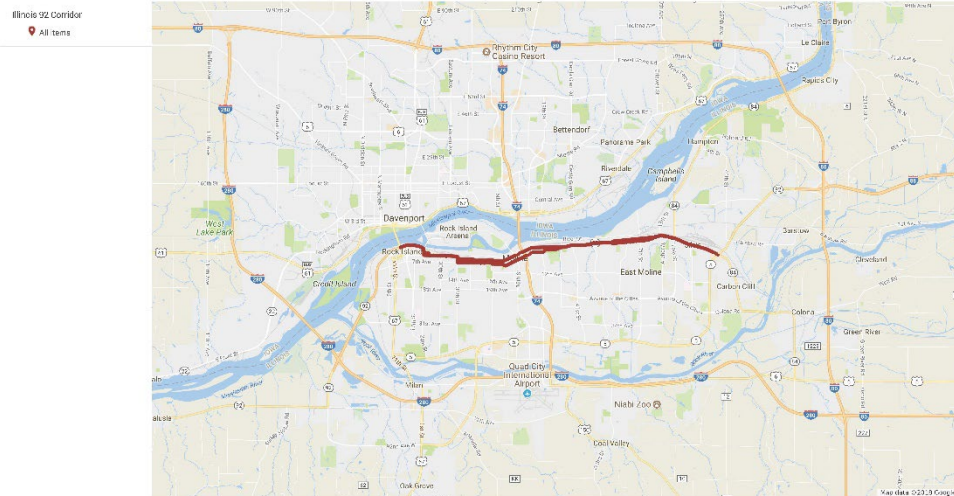
Illinois 92 Corridor Study/Bi-State Regional Commission



Source: Gewalt Hamilton Associates, Inc.

# COLLABORATION: DEFINING THE CORRIDOR

Illinois Quad Cities Illinois 92 Corridor Study Map



- Corridor Extent
- Participation
  - Partners – Cities, State & Transit
  - Cost Share Splits
  - Matching Commitment/Letters of Support
  - Grant Applicant-Administrator

# STATEWIDE PLANNING & RESEARCH (SPR) APPLICATION

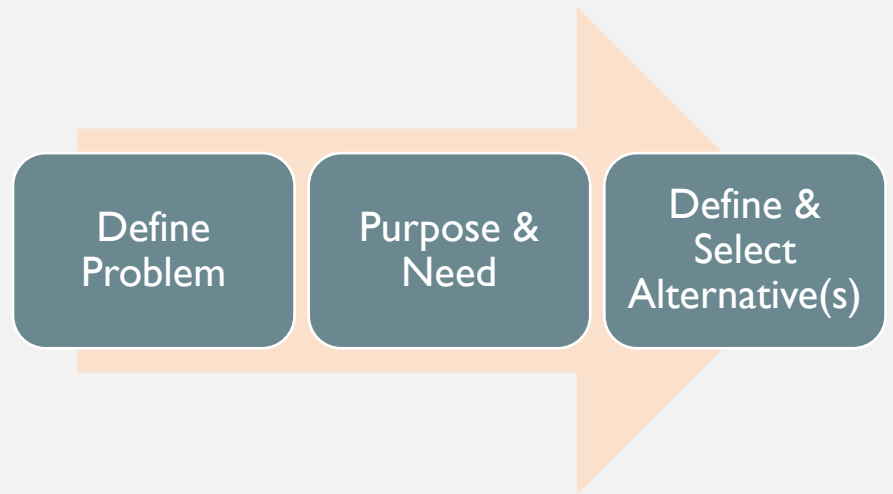
- Applicant
- Scope of Work
- Total Cost and Share
- Project Deliverables/Milestones
- GATA Application & Budget
- Programmatic Risk Assessment
- Location Map
- Letters of Support/Participation

Illinois Statewide Planning & Research Funds:  
**Total Project Cost: \$300,000** \$240,000      Local Share: \$60,000

	Recommend:		POP-2010	% of POP	Three methods		
	Compromise	Ave. of 3 Methods			Split-Population	Split-Equally	Split-Miles
Metro	\$10,000.00	\$4,000.00			\$-	\$12,000.00	\$-
Rock Island	\$15,000.00	\$16,062.96	39018	35.06%	\$21,037.36	\$12,000.00	\$15,151.52
Moline	\$15,000.00	\$20,299.77	43483	39.07%	\$23,444.76	\$12,000.00	\$25,454.55
East Moline	\$10,000.00	\$11,666.86	21302	19.14%	\$11,485.42	\$12,000.00	\$11,515.15
Silvis	\$10,000.00	\$7,970.42	7479	6.72%	\$4,032.46	\$12,000.00	\$7,878.79
	\$60,000.00	\$60,000.00	111282	100.00%	\$60,000.00	\$60,000.00	\$60,000.00

# REQUEST FOR QUALIFICATIONS

- Scope of Work
  - Corridor Planning Study Process (Florida DOT example)
  - Define Public Process – Stakeholders & Outreach
- List of Qualified Consultants by Expertise
- Evaluation Criteria
- Interviews





# STUDY MANAGEMENT PROCESS

## PROJECT MANAGEMENT

- Select Consultant – Consultant Team
- Consultant Agreement – “Not to Exceed”
- Well-Defined Scope of Work
- Timeline –
  - Monthly Consultant Check Ins
  - Public Input (Roles for Media Outreach)
  - Deliverables
- Scheduled Steering Committee Meetings
- Approval Process or Report Acceptance

## FISCAL MANAGEMENT

### Invoicing and Documentation

- Frequency & documentation for invoicing – consultant and subconsultant(s)
- Consistency of budget and sublevel tasks by prime or subconsultant
- Invoice deadlines for timely reimbursements (Set date prior to agency approval)

### Grant Reporting

- Frequency of reporting (BOBs)
- Coordinate Programmatic & Fiscal Reporting

# DELIVERABLES

- Problem, Purpose and Need Approach
- Public Involvement Workshop
- Existing Conditions Report
- Alternatives Public Workshop
- Alternatives & Corridor Strategies Report



## STUDY MANAGEMENT CONTACT

Gena McCullough, AICP  
Asst. Executive/Planning Director  
Bi-State Regional Commission  
(309)793-6300, X 1146  
[gmccullough@bistateonline.org](mailto:gmccullough@bistateonline.org)

IL 92 CORRIDOR STUDY

## **ALTERNATIVES & STRATEGIES SUMMARY**



FEBRUARY 2020



# Overview of Projects



## Statewide Planning & Research Funds

Molly Berns, Executive Director

March 16, 2022



# Regional Travel Model Update

Grant period: November 1, 2019 to December 31, 2021

Application submitted: April 26, 2019

Application awarded: July 1, 2019

Amount: \$71,595 (SPR:\$57,276/Sangamon County: \$14,319)

Deliverable: Updated RTM for the MPO region

Closeout submitted: February 23, 2022

## *Project overview*

- Model update: Federally Compliant Procurement
- Obtaining socioeconomic data was biggest challenge (IDES)

## *Scope of Work project phasing document required from vendor*

- Tasks
- Timeline
- Vendor staffing requirements/completion of tasks
- Regular phone calls to monitor progress
- Tie the above to BOBS reporting

## *Fiscal management of project*

- Project coordinator, other staff involved
- BOBS form, Excel spreadsheet on shared drive
- Account Tech then filed quarterly reports and requests for payments with BOBS spreadsheets attached

# LEAM/REIM Model

Land Use Evolution & Impact Assessment Model  
Regional Economic Input/Output Model

Grant period: September 1, 2018 to August 31, 2020

Application submitted: May 16, 2018

Application awarded: June 28, 2018

Amount: \$94,359.55 (SPR:\$75,488/Sangamon County:  
\$18,872)

Deliverable: Functional model to be used by SSCRPC staff to  
analyze economic and land use factors in the region

Closeout submitted: October 30, 2020



### *Project processes*

- University of Illinois previously developed the LEAM for the area under a different grant
- This project linking the LEAM to the REIM

### *Required project phasing document from vendor*

- Tasks
- Timeline
- Vendor staffing requirements/completion of tasks
- Regular phone calls/meetings to monitor progress
- Tie to BOBS reporting

### *Fiscal management of project*

- Primary project coordinator with other staff involved
- BOBS form, Excel spreadsheet on shared drive used by staff
- Account Tech then filed quarterly reports and requests for payments with BOBS spreadsheets attached.



# Two additional SPR grants in progress

9<sup>th</sup> Street/Peoria Road Corridor Study

County-wide Route 66 Corridor Study

# Thoughts?

- IDOT process is fairly streamlined
- GATA
- Establish an internal process for grant management
  - Streamline while still meeting reporting requirements
- Think outside the box, collaborate with local/regional partners for ideas

# Questions?

*Thank you!*

For additional questions:

Molly Berns, Executive Director

217-535-3110

[molly.berns@co.Sangamon.il.us](mailto:molly.berns@co.Sangamon.il.us)





# Applying for Funding

## Online Application

### Basic Project Information:

- Costs

- Scope

- Source of Matching Funds (20%)

- Timeframe

### How the project implements/supports:

- IDOT Long Range Transportation Plan

- Asset Management

- Performance Based Project Selection

- Benefits a disadvantaged/economically distressed community



# Grant Accountability and Transparency Act (GATA)

## Requirements of Grantee (if a non-IDOT sponsor)

Each grantee that receives state funds or federal funds that pass through the state must complete certain items annually:

- Registration
- Pre-Qualification
- Internal Controls Questionnaire
- Indirect Cost Negotiation

# More on GATA

## Requirements per Project

Each project that receives state funds or federal funds that pass through the state must complete certain items:

- [Application](#)
- [Programmatic Risk Assessment](#)
- [Budget Template](#)
- Notice of State Award

# Project Prioritization Criteria

Long Range Transportation Plan

Asset Management

Performance Based Program Development

Disadvantaged/Economically Distressed  
Community

# Disadvantaged/Economically Distressed Community

**\*\*New this year\*\***

- Projects that benefit disadvantaged/economically distressed community(ies) will receive prioritization
- No specific definition
  - [DCEO Underserved Areas](#)
  - [IEPA Environmental Justice Areas](#)
- Multi-Jurisdictional
- Eligible for 100% funding



# Asset Management

- Develops analytical tools or data collection
- Use to prioritize future improvements
- Model future asset condition
- Identify different improvement strategies
- Slow the rate of asset deterioration so assets last as long as possible

*This could also be used to assist in developing...*

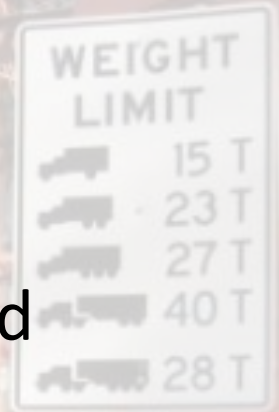


# Performance Based Program Development Process

Does the proposed project:

Work towards creating a performance based program development process?

- This involves using data and metrics to evaluate proposed projects to ensure the projects meets the goals and objectives outlined in planning documents and policy statements.
- Could include purchasing data, technology tools, or coordination efforts.



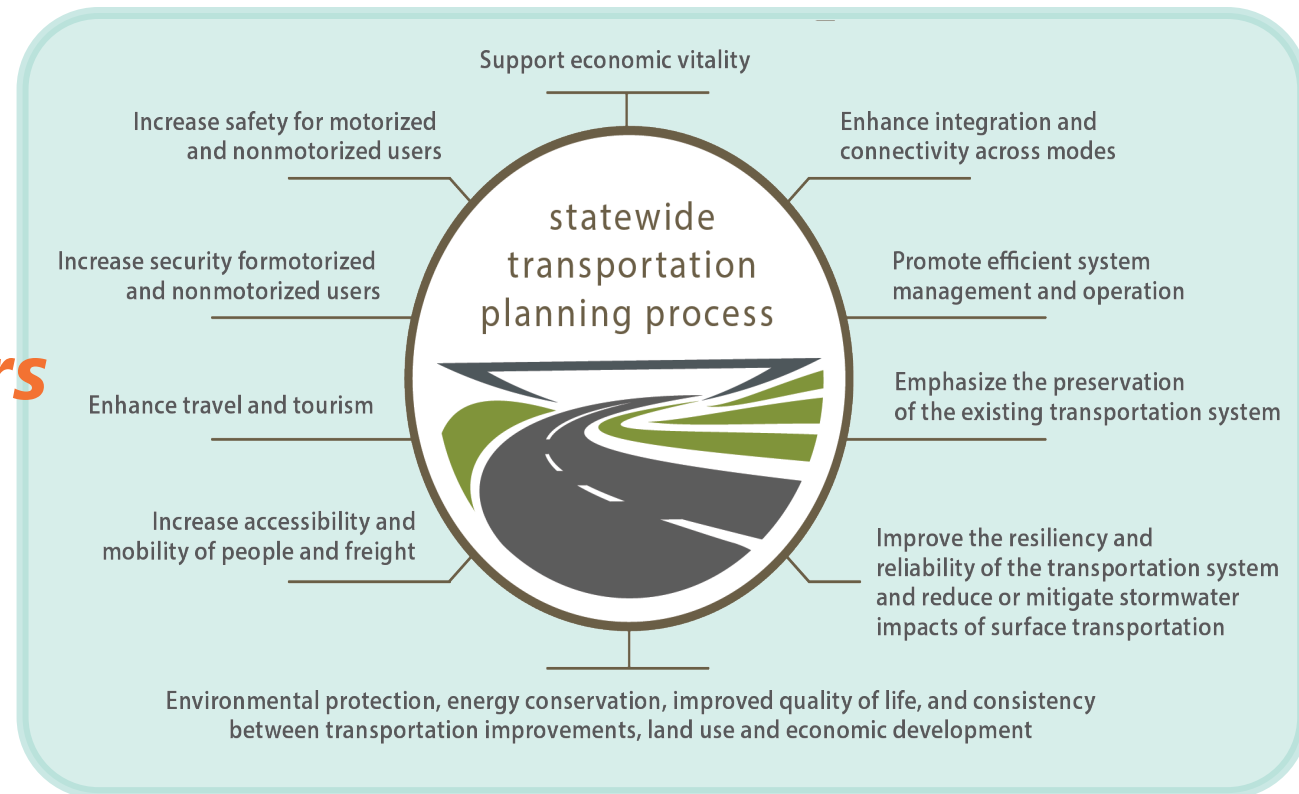


# Long Range Transportation Plan – State and Federal Requirements

- State requirements include developing and maintaining a continuing, comprehensive and integrated planning process for the development of a statewide master plan for transportation.

*every five years*

- Federal requirements call for the statewide transportation planning process to include ten primary goals.





# LRTP and Multi-Year Program (MYP) Relationship

- **LRTP** establishes a set of policies to guide future system development, rather than specific improvements
- Specific improvements are programmed separately and released annually as part of IDOT's **MYP**
- Annual **MYP** development should incorporate goals, objectives and performance measures identified in the **LRTP**





# GOALS

# IDOT Long Range Transportation Plan

How does the project help implement the goals/objectives outlined in the LRTP?



## ECONOMY

Improve Illinois' economy by providing transportation infrastructure that supports the efficient movement of people and goods.

## LIVABILITY

Enhance the quality of life across the state by ensuring that transportation investments advance local goals, provide multimodal options, and preserve the environment.

## MOBILITY

Support all modes of transportation to improve accessibility and safety by improving connections between all modes of transportation.

## RESILIENCY

Proactively assess, plan and invest in the state's transportation system to ensure that our infrastructure is prepared to sustain and recover from extreme events and other disruptions.

## STEWARDSHIP

Safeguard existing funding and increase revenues to support system maintenance, modernization, and strategic growth of Illinois' transportation system.

PERFORMANCE GOALS



# LRTP Performance Measures

- A plan is only as good as its **implementation**.
- **Objectives** and **strategies** have been developed for each goal.
- Performance measures were identified to **track** performance.

**These are the items we are looking to implement with the SPR call for projects.**

# For Example...

## Objective

*Support projects that improve connectivity and coordination of services to enhance continuity and accommodate the efficient movement of people, goods and services across all modes to address intermodal efficiency.*

## Strategies

- **Review and evaluate intermodal connections across the state.**
- **Improve efficiency of transfers of freight and passengers between modes.**
- **Work collaboratively with ports and waterways stakeholders to identify and address issues related to transporting commerce via navigable waterways.**
- **Advocate for the success of Illinois' passenger rail program.**
- **Identify shifts in population and employment centers and ensure that there are adequate airport services provided to those population and employment centers.**

# For Example...

## Performance Measures

- Prepare regular assessment of performance of designated National Highway System (NHS) intermodal connectors
- Number of aviation, highway, & rail program investments that support improved use, safety & ease of access to intermodal facilities
- Prepare regular waterborne commerce report assessing the utilization of port districts & other port terminals
- Increased education and marketing of passenger rail options & transfer options between modes
- Percent of population and employment with drive access to a commercial airport

## Implementation

- Develop regular report on Illinois National Highway System Intermodal Connectors
- Develop regular report on Illinois Waterborne Transportation
- Develop new marketing campaign for intercity passenger rail

# Implementation Matrix

GOAL: Mobility						
Support all modes of transportation to improve accessibility and safety by improving connections between all modes of transportation.						
Objective 1:	Enhance intermodal freight connectivity and mobility to improve continuity and accommodate the efficient movement of goods and services.	Explore scenarios where modal connections can be improved to facilitate shipments by rail, water and air.	Modal breakdown of annual shipping volumes	<ul style="list-style-type: none"> <li>Begin outreach efforts to freight companies and stakeholders in an effort to identify and address issues related to freight transportation in Illinois. <b>Lead:</b> IDOT Office of Planning and Programming, IDOT Bureau of Communications Services <b>Partner(s):</b> IDOT Districts, Freight Companies, Freight Stakeholders</li> <li>Support efforts to freight stakeholders to explore where modal connections can be improved to facilitate shipments by rail, water and air. <b>Lead:</b> IDOT Office of Planning and Programming <b>Partner(s):</b> Local Government, Planning Agencies, Freight Companies, Freight Stakeholders</li> <li>Provide resources to MPOs on using the NPMRDS data source to measure performance. <b>Lead:</b> IDOT Office of Planning and Programming <b>Partner(s):</b> MPOs</li> <li>Identify how ITS can improve freight movement within and through the state. <b>Lead:</b> IDOT Office of Planning and Programming, IDOT Bureau of Operations <b>Partner(s):</b> Freight Stakeholders</li> <li>Develop live, internet-based, intermodal dashboard of approved freight routes, current travel times and rerouting suggestions. <b>Lead:</b> IDOT Bureau of Operations <b>Partner(s):</b> Freight Stakeholders, IDOT Office of Planning and Programming</li> </ul>		
		Work collaboratively with freight stakeholders to identify and address issues related to transporting freight within Illinois.	Number of intermodal facilities for freight movements			
		Enhance intermodal connectivity by identifying and implementing improvements needed to truck routes, ports, airports and rail lines that provide access to Illinois intermodal facilities.	Number of intermodal facilities with NHS connections			
		Establish procedures to use the National Performance Management Research Data Set (NPMRDS) to calculate performance.	Truck Travel Time Reliability (TTTR) index			
		Evaluate existing and proposed innovative intelligent transportation systems (ITS) technology to improve safety.	ITS Statewide Architecture and Strategic Plan Update			
		Explore ITS technologies to foster the most efficient movement of freight.	Live, internet-based, intermodal dashboard of approved freight routes, current travel times and rerouting suggestions			
		Investigate potential use of commercial connected/ autonomous vehicles (CAV) for the movement of freight.	Number of studies concerning commercial CAV and impacts on the freight transportation network			

# Program Management

You've been funded, what next?

- Non IDOT Applicants Must
  - Complete all GATA Requirements  
Application, Budget Template, Program Risk Assessment (PRA)
  - Through the GATA Grantee Portal  
Registration, Pre-Qualification, Internal Control Questionnaire (ICQ)
  - Notice of State Award – July 1, 2022
  - Agreement Execution (9 to 12 weeks)
  - [Invoice](#) within 3 months of fully executed agreement

**NO WORK CAN BE INVOICED IF FULLY EXECUTED  
AGREEMENT IS NOT IN PLACE**



# Questions?

Michael Vanderhoof

Bureau Chief, Planning

IDOT Office of Planning & Programming

Office: 217-782-8080 | Cell: 217-720-6527

[Michael.Vanderhoof@Illinois.gov](mailto:Michael.Vanderhoof@Illinois.gov)