



Author: Drew Christopher

A. Purpose

Setup the Illinois DOT CONNECTED CADD Environment on:

- Integrated with Bentley's installed environment
- Local PC
- Server

B. Owner

Bureau of Design and Environment \ Surveys, Mapping and Modeling \ CADD Modeling & GIS Support

C. Audience

IDOT CONNECTED CADD Environment users

D. Required Items

- Current IDOT CONNECTED CADD Environment downloaded from:
 - <https://idot.illinois.gov/doing-business/procurements/engineering-architectural-professional-services/consultant-resources/highways/cadd/support.html>

E. Pre-Requisites

- Admin access to C:\ProgramData\Bentley\CONNECTED Software folder\Configuration
- Ability to copy files to the root of the C:\ drive
- Extract the contents of the downloaded "IDOTCAD_CONNECTED.exe" file to a location on your local PC.

F. Specific Instructions/Requirements

User Preferences in the IDOT Environment

User preferences are MOVED to a general location for all users on the LOCAL PC,

C:\pw_work\ _Bentley_ORD_Prefs\UserName\ if it exists, otherwise it defaults to the default installed location. This is controlled in the IDOT_Standards.cfg file located in the IDOTCAD_ORD\Configuration\Organization-Civil folder on line 46

Integrate with Installed Bentley Environment

*To date we are unable to get this setup process to work with PowerDraft.

For OpenRoads Designer

1. From the "IDOT_CONNECT\Configuration\Organization-Civil" folder COPY the "IDOT_Standards" folder and "IDOT_Standards.cfg" file (Figure F.1.a) to the "C:\ProgramData\Bentley\CONNECTED Software folder\Configuration\Organization-Civil" folder. (Figure F.1.b)

For OpenBridge Modeler

2. From the "IDOT_CONNECT\Configuration\Organization-Civil" folder COPY both the "IDOT_Standards" and "IDOT_Bridge_Standards" folders and "IDOT_Standards.cfg" and "IDOT_Bridge_Standards.cfg" files (Figure F.2.a) to the "C:\ProgramData\Bentley\CONNECTED Software folder\Configuration\Organization-Civil" folder. (Figure F.2.b)

For BOTH OpenRoads Designer and OpenBridge Modeler

3. From the "IDOT_CONNECT\Configuration\Workspaces" folder COPY the "IDOTCAD CONNECT" folder and "IDOTCAD CONNECT.cfg" file (Figure F.3.a) to the "C:\ProgramData\CONNECTED Software folder\Configuration\WorkSpaces" folder. (Figure F.3.b)



Setup on Local Hard Drive OR Server

*To date we are unable to get this setup process to work with PowerDraft.

4. Move the extracted IDOT_CONNECT folder to the root of your C:\ drive, or any other location you want. (Figure F.4)
5. Copy the “ConfigurationSetup.cfg” file from the “IDOT_CONNECT” folder (Figure F.5.a) to the “C:\ProgramData\Bentley\CONNECTED Software folder\ Configuration” folder. (Figure F.5.b)
6. Open the “ConfigurationSetup.cfg” file located in the “C:\ProgramData\Bentley\CONNECTED Software folder\ Configuration” folder with a text editor.
 - a. **Local Hard Drive:** If you have the IDOTCAD_ORD folder anywhere besides “C:\ IDOT_CONNECT” then you will need to edit the lines shown in Figure F.6.a and put the complete path to the Configuration folder in place of “c:/ IDOT_CONNECT /Configuration”. Make sure and use forward slashes and not backslashes. If you are running a Server setup then you do not need to edit these lines, the software will skip it.
 - b. **Server:** If you have the IDOT_CONNECT folder on a Server then you will need to edit the lines shown in Figure F.6.b and put the complete path to the Configuration folder in the place of “Z:/ IDOT_CONNECT /Configuration”. You can use the full UNC path such as “//Server/share/ IDOT_CONNECT /Configuration” instead of a drive letter as shown. Make sure and use forward slashes and not backslashes

Opening Your CONNECTED Software with the IDOT CADD Standards

7. Start your CONNECTED Platform software and Select “Custom Configuration” on the left and then “IDOTCAD CONNECT” from the Workspace drop down. To setup a new WorkSet follow the “WorkSet Setup for ORD 10.10.02.pdf” in the IDOTCAD_ORD folder, otherwise select the desired WorkSet from the pull-down. (Figure F.7)
8. To double check your configuration setup go to About Configuration in Back Stage by selecting “File -> Settings -> Configuration -> About Configuration”. (Figure F.8)
9. The About Configuration Dialog should appear similar to what is shown in Figure F.9

G. Post Activities

- None



H. Table of Figures

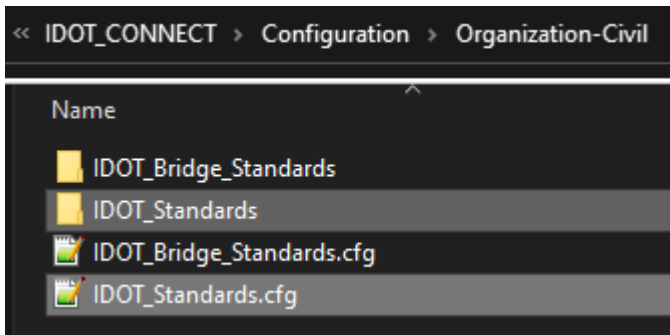


Figure F.1.a

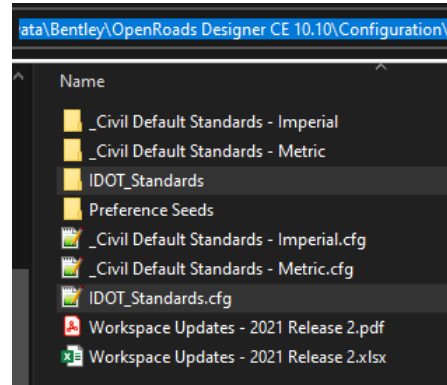


Figure F.1.b

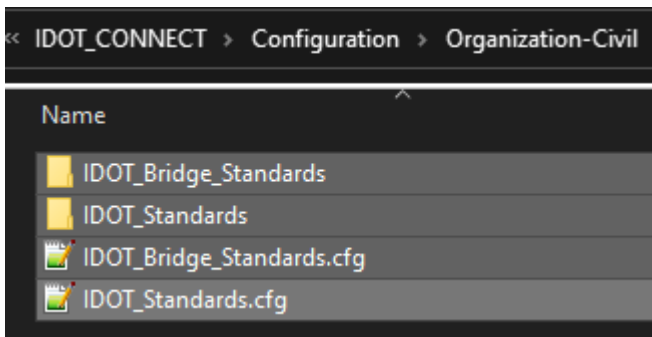


Figure F.2.a

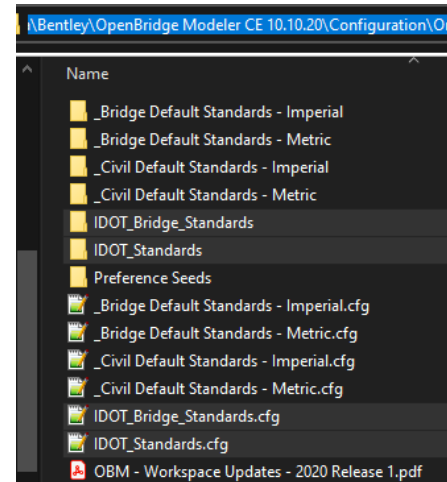


Figure F.2.b

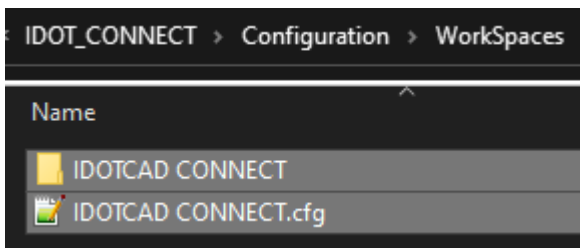


Figure F.3.a

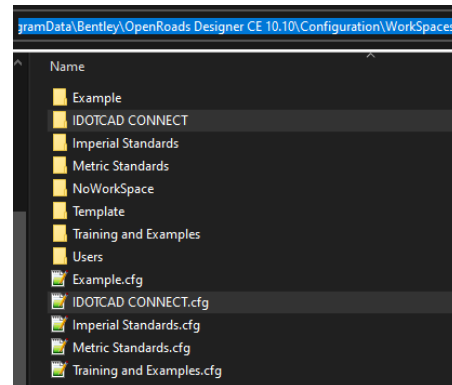


Figure F.3.b



Setup IDOT CONNECTED CADD Environment

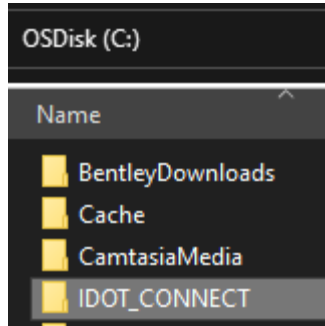


Figure F.4

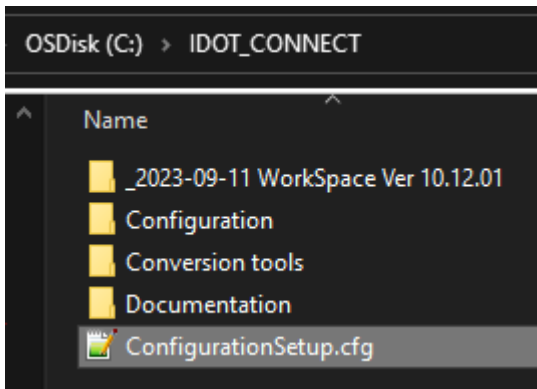


Figure F.5.a

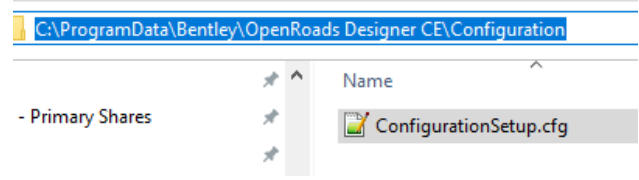


Figure F.5.b

```

31  %if exists (C:/IDOT_CONNECT/Configuration/)
32  _USTN_CUSTOM_CONFIGURATION = C:/IDOT_CONNECT/Configuration/      #Local Environment Location
33  %else exists (Z:/IDOT_CONNECT/Configuration/)
34  _USTN_CUSTOM_CONFIGURATION = Z:/IDOT_CONNECT/Configuration/      #Server Environment Location

```

Figure F.6.a

```

31  %if exists (C:/IDOT_CONNECT/Configuration/)
32  _USTN_CUSTOM_CONFIGURATION = C:/IDOT_CONNECT/Configuration/      #Local Environment Location
33  %else exists (Z:/IDOT_CONNECT/Configuration/)
34  _USTN_CUSTOM_CONFIGURATION = Z:/IDOT_CONNECT/Configuration/      #Server Environment Location

```

Figure F.6.b

If you have questions regarding setup please contact IDOT CADD and GIS Support at DOT.CADD.GIS.Support@illinois.gov.



Setup IDOT CONNECTED CADD Environment

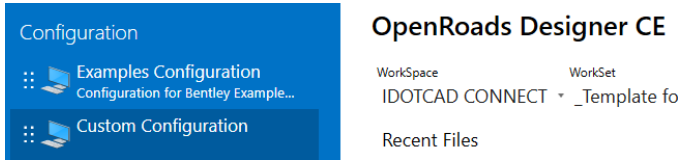


Figure F.7

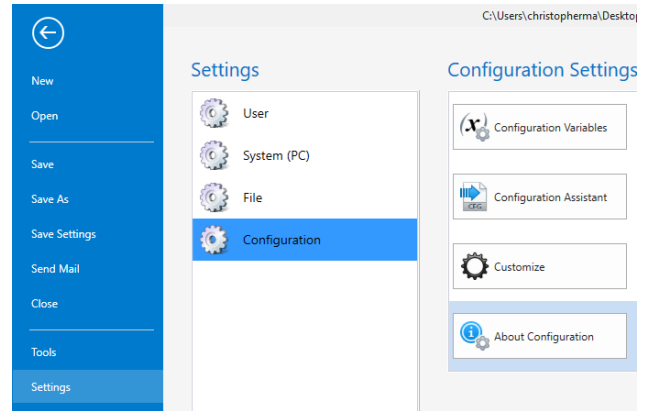


Figure F.8

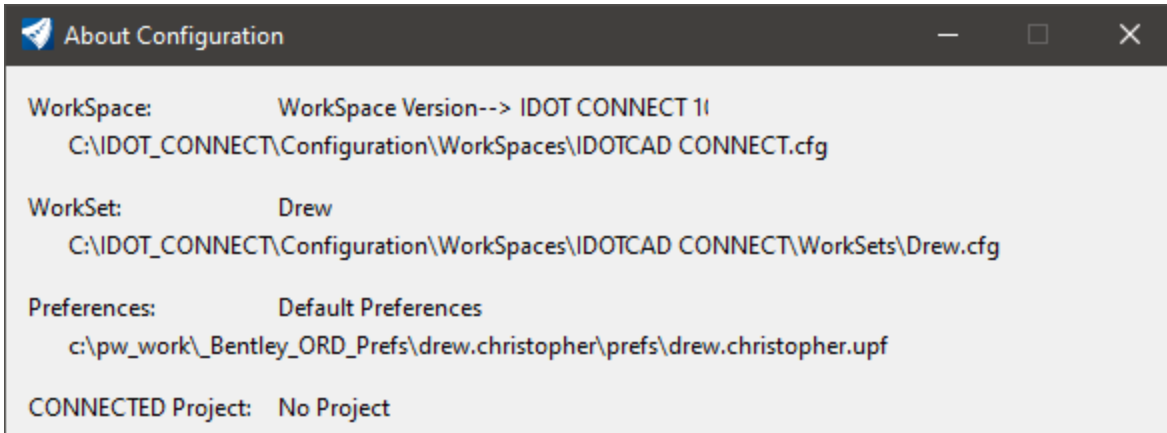


Figure F.9

If you have questions regarding setup please contact IDOT CADD and GIS Support at DOT.CADD.GIS.Support@illinois.gov.