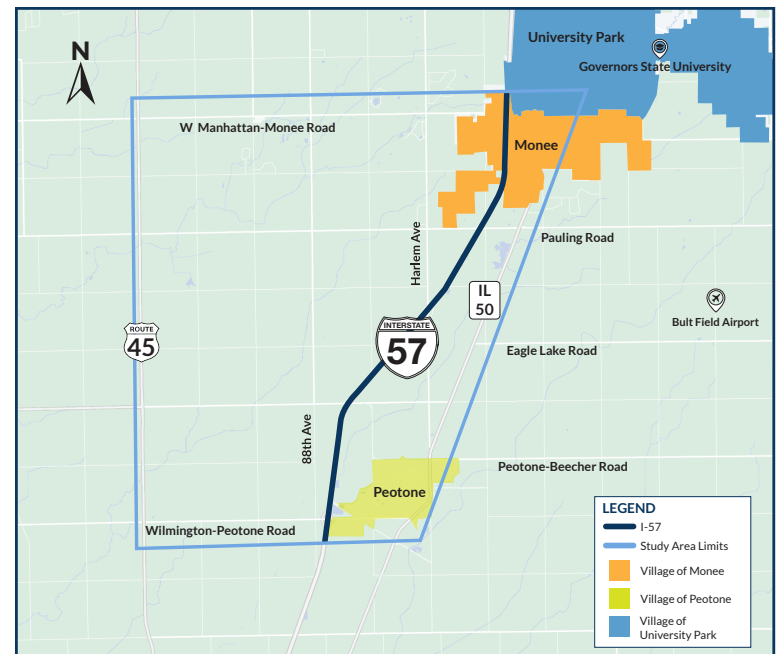


I-57 Access Study

South of Wilmington-Peotone Rd. to North of Manhattan-Monee Rd.

The I-57 Access Study is a preliminary engineering and environmental study, or Phase I, that focuses on improving access to I-57 in Will County. The study area is bounded by Wilmington-Peotone Road (south), Manhattan-Monee Road (north), US Route 45 (west), and 1-mile east of IL 50 (east). The Villages of Peotone, Monee, and University Park are included within the study area.

The study will evaluate existing conditions, define a purpose and need, develop and assess a range of reasonable alternatives, and identify a preferred alternative. The goal is to improve local and regional connectivity and support future traffic demands through enhanced access to I-57.



Purpose for Today's Meeting

Provide a study update

Hear what the study team has been working on

Present Purpose and Need

A key milestone in the NEPA process that sets the foundation for the study

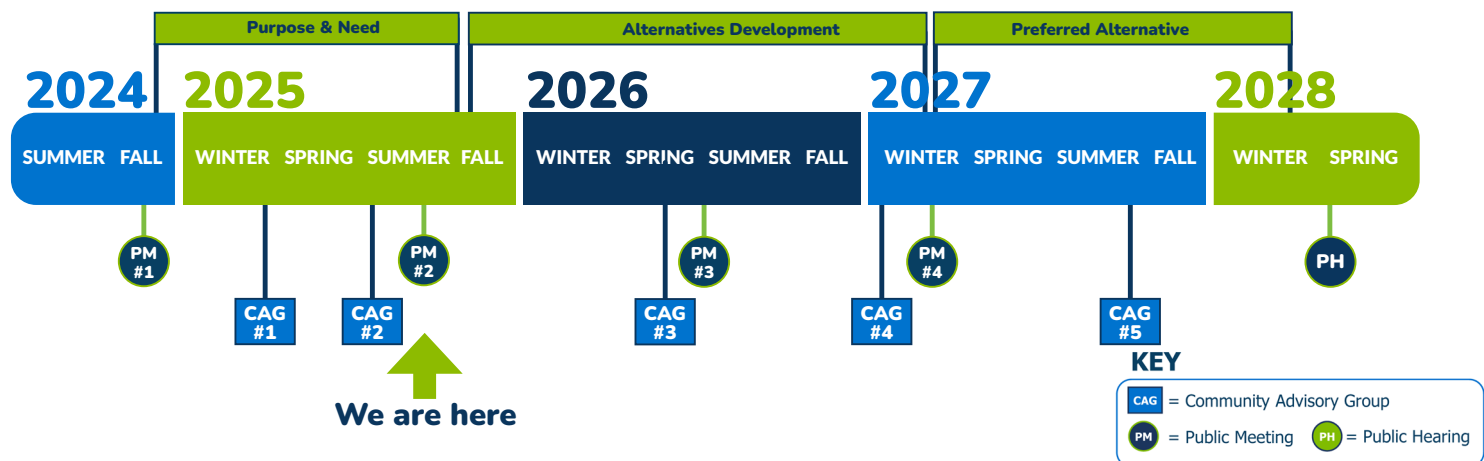
Obtain your input

Does the Purpose and Need reflect the transportation challenges you experience?

IDOT Project Process



Study Timeline - Phase I



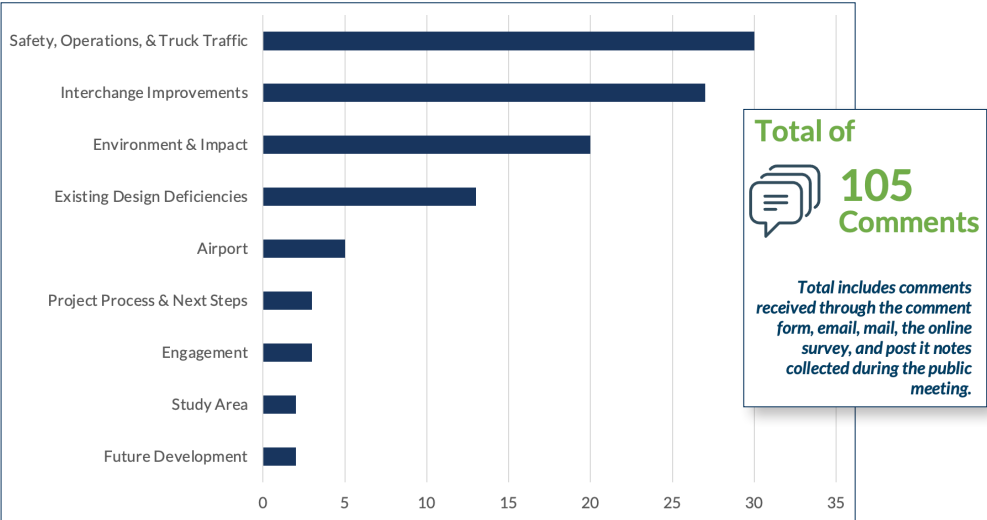
Data Driven Engagement, What We've Heard

Public Meeting #1

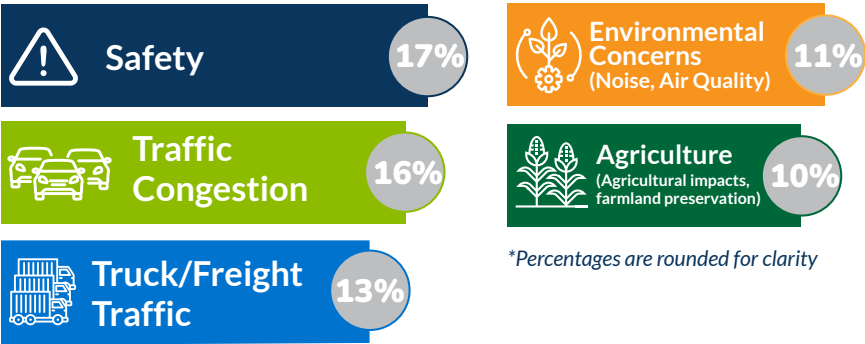
The first public meeting introduced the I-57 Access Study and outlined the study process. Attendees were invited to share input on priorities and areas of concern or importance within the study area. Key themes from the public feedback included the need to address safety, congestion, and truck traffic, while also protecting the environmental resources and improving existing interchange deficiencies.

Public Meeting #1 Summary and Comments Received

November 13, 2024 • Peotone, IL



Survey Participants' Priorities for the Study



*Percentages are rounded for clarity

Emergency services	8%
Environmental resources (Forest preserves/natural resources impact)	6%
Access and Mobility	5%
Wetland/Waterways (Wetland/water resource impacts)	5%
Future travel needs	5%
Development/Business Access	4%
Public Transportation	1%

Community Advisory Group (CAG) Meetings

CAG meetings have provided the study team with valuable input into local concerns and community perspectives. Members were asked to share their experiences and concerns about accessing I-57 or local roadways, and to identify specific problems that the study should address. The CAG provided consistent feedback that the study should focus on freight and truck traffic, safety, congestion, and connectivity to neighboring communities. This input, combined with technical analysis helped define the Purpose and Need for the study.

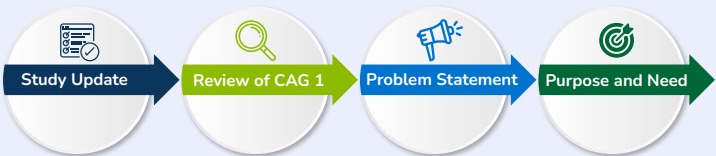
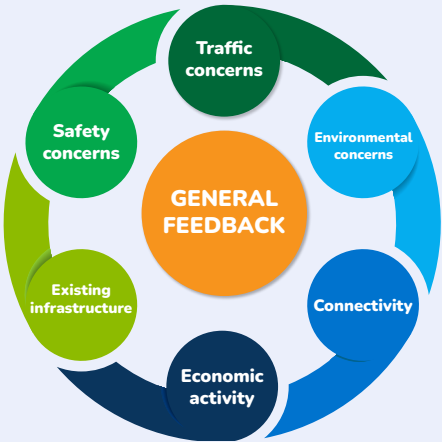
CAG Meeting #1

February 25, 2025 • Monee, IL



CAG Meeting #2

July 17, 2025 • Peotone, IL



Purpose and Need

This is a key milestone of the NEPA process, developed with input from stakeholders.

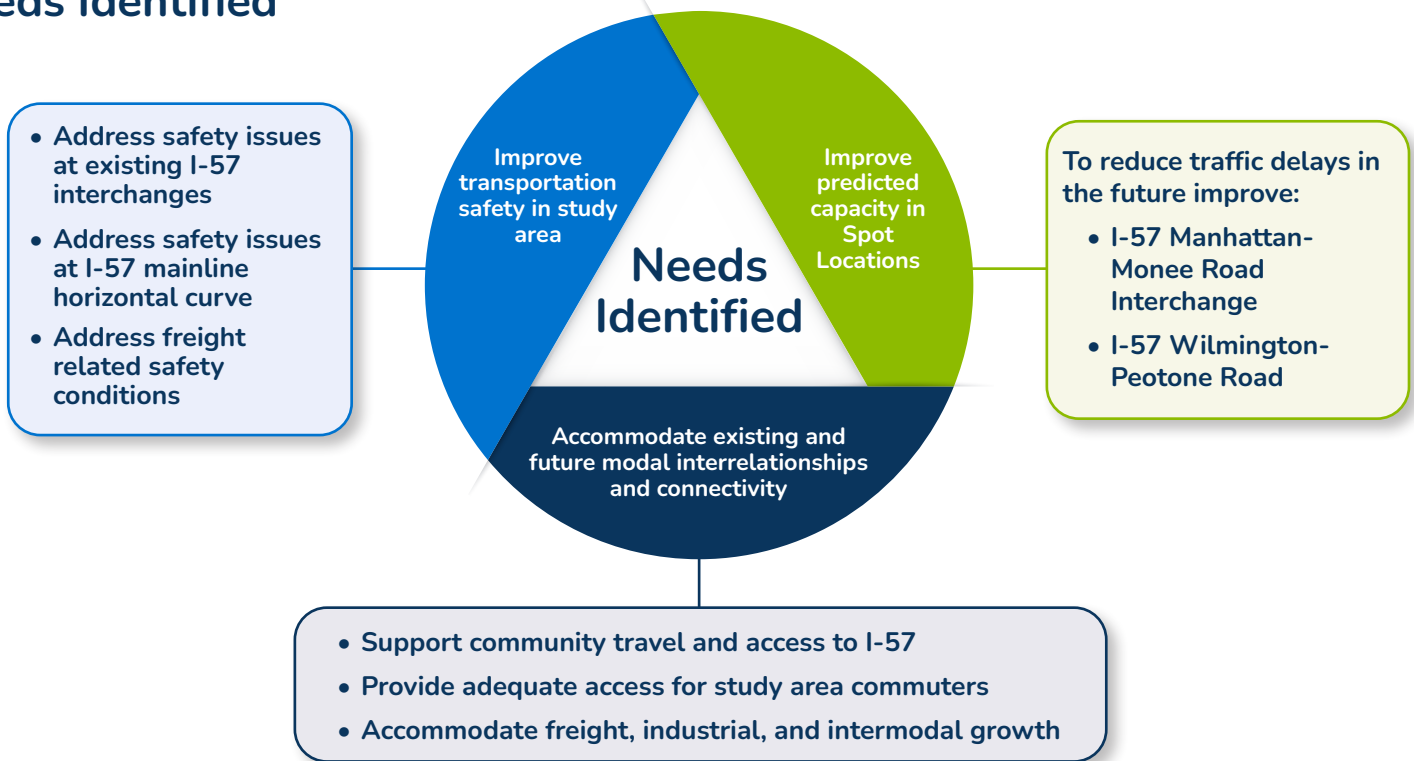
Purpose establishes why the proposed action is being pursued

Need identifies the transportation problems to be addressed

The **Purpose Statement** establishes goals and objectives of the study, acting as a foundation for the evaluation of alternatives and the selection of the preferred alternative.

The purpose of the I-57 Access Study is to enhance transportation safety, provide adequate transportation system capacity, and accommodate projected transportation demands along the I-57 corridor between Monee and Peotone.

Needs Identified



Alternatives Development

A reasonable range of alternatives will be developed based on public input, the Purpose & Need, and data collection. After refining these alternatives, the preferred alternative will be selected. Throughout the study, a No Build alternative will be carried forward, which assumes no improvements and only regular roadway maintenance



How to Get Involved

There are several ways to stay informed and contribute to the I-57 Access Study:

- **Complete our survey** to share your feedback
- **Attend our public meetings** to learn more and voice your priorities
- **Participate in the Community Advisory Group**
- **Subscribe to e-mail updates** for the latest study news
- **Visit the study website** for study information and resources
- **Contact our team** with questions or comments



Next Steps



Contact Us

Via Email:

AccessI57Study@gmail.com

Via Website:

Tiny.cc/AccessI57

Via Mail:

Illinois Department of Transportation
Bureau of Programming
Attn: Anna Kutryn, P.E.
201 W Center Court
Schaumburg, Illinois 60196

Via QR code to Study Website:

