

# I-57 Access Study

South of Wilmington-Peotone Rd. to North of Manhattan-Monee Rd.

## Public Meeting #2

August 26, 2025



The Illinois Department of Transportation welcomes you to the second Public Meeting for the I-57 Access Study.

## MEETING PURPOSE

- Study Overview and Update
- Public Engagement Review
- Purpose and Need
- Identify Next Steps

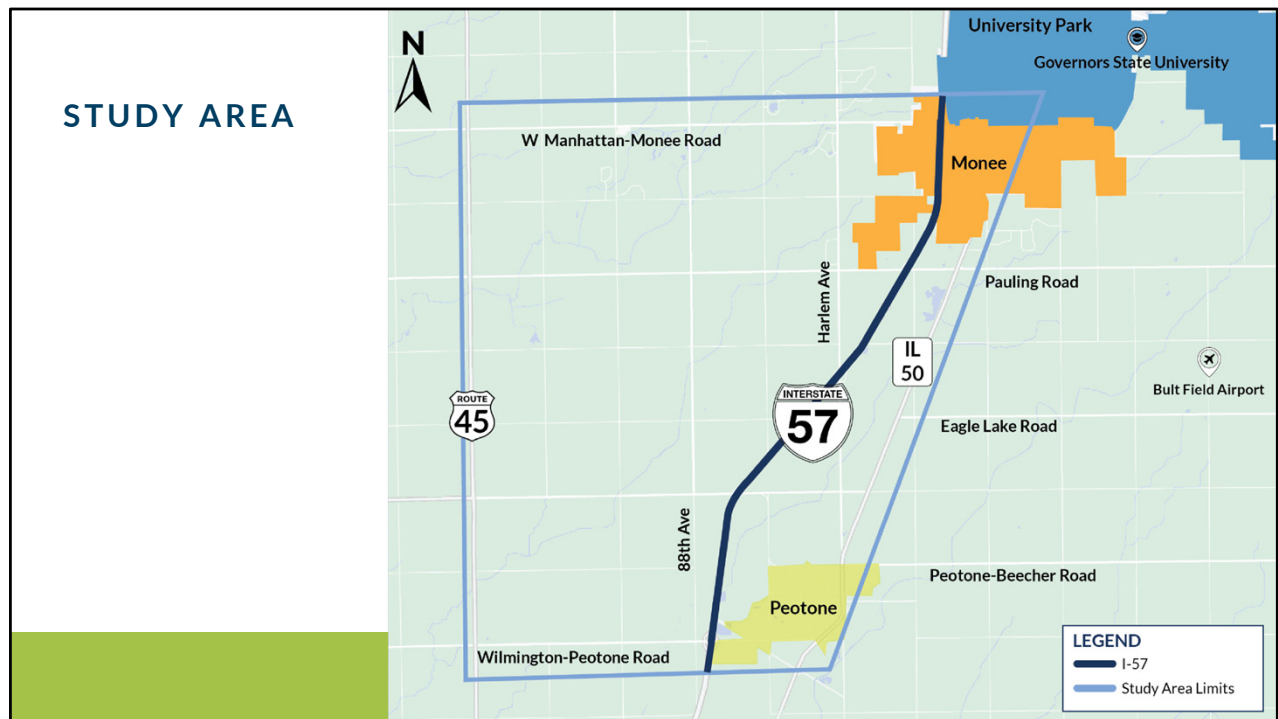


The purpose of today's meeting is to provide a study update, review the public engagement to date, present Purpose and Need, and discuss next steps.

## STUDY REVIEW AND UPDATE



Let's begin with a quick study overview and update.



The study area extends from south of Wilmington-Peotone Road to north of Manhattan-Monee Road, and from US 45 on the West to 1-mile east of IL 50. Within its limits, the study area spans approximately 8.5 miles of I-57 and includes the Villages of University Park, Monee and Peotone in eastern Will County.

## IDOT PROJECT PROCESS REVIEW

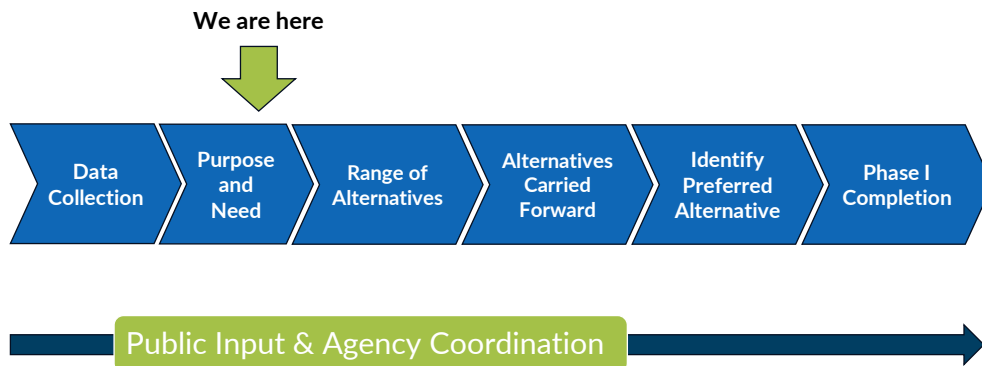
We are here



This improvement is included in the Department's FY 2025-2030 Proposed Highway Improvement Program.

As a reminder, IDOT conducts projects in three distinct phases. This project is currently in the preliminary engineering and environmental studies phase or Phase I. Please note that all subsequent phases of this project are funded in IDOT's fiscal year 2025 to 2030 proposed highway improvement program.

## PHASE I MILESTONES

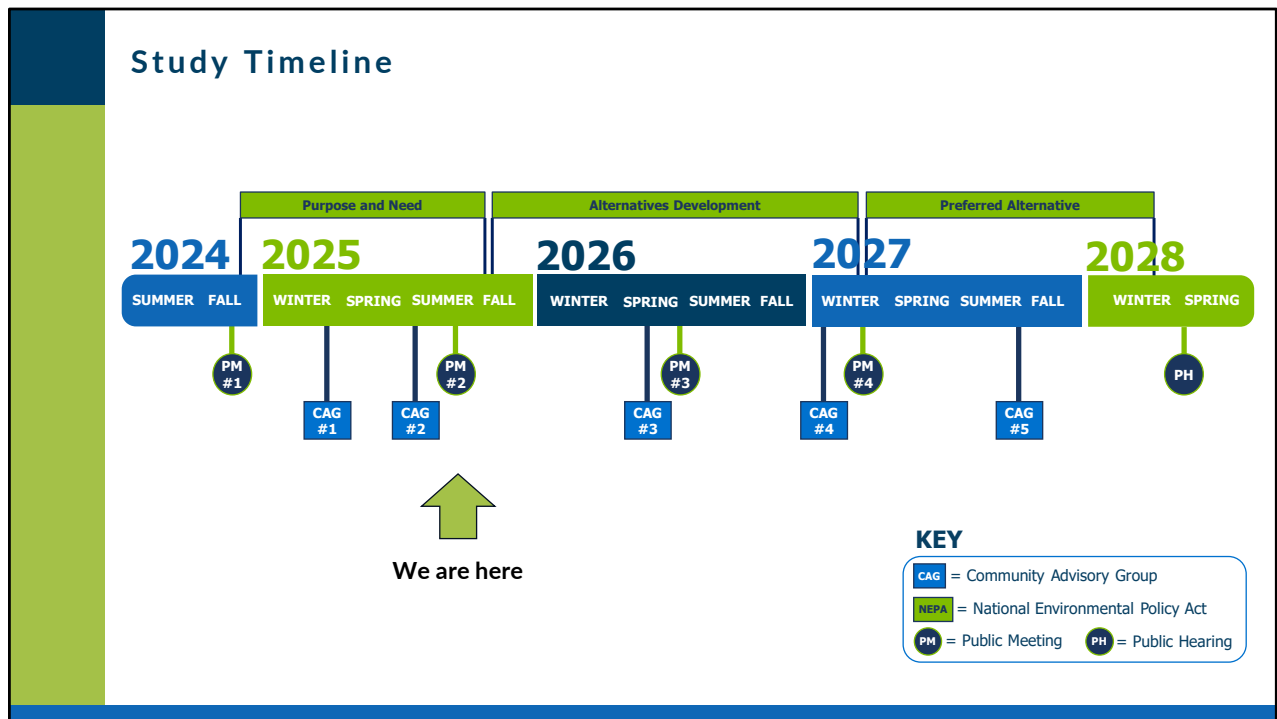


There are several key milestones in a Phase I study. We are currently using the information gathered during Data Collection for the development of the Purpose and Need, which is being presented today.

From the Purpose and Need, a broad range of alternatives will be developed and considered, including the No-Build Alternative. A screening and evaluation process will determine which alternatives will move forward to be studied in greater detail, known as the Alternatives Carried Forward.

Finally, a Preferred Alternative will be identified for public comment and agency concurrence.

Public engagement and agency coordination will occur throughout the study. Public engagement is vital to better understand the concerns and issues within the study area, while agency coordination is important to ensure compliance with laws and policies of federal, state, and local governmental agencies having jurisdiction in the study area.



Throughout the study process, there will be multiple public engagement opportunities. We hosted our first public meeting in November of 2024 and our first two community advisory group meetings in February and July of this year. The study is expected to conclude in 2028.

## Public Engagement Review



As noted, our first public meeting was held on November 13, 2024. Let's review what we heard.



## Public Meeting #1 Summary

November 13, 2024, Peotone, IL



Attendees



Comment Form



Mail



Email



Online Survey



Participants

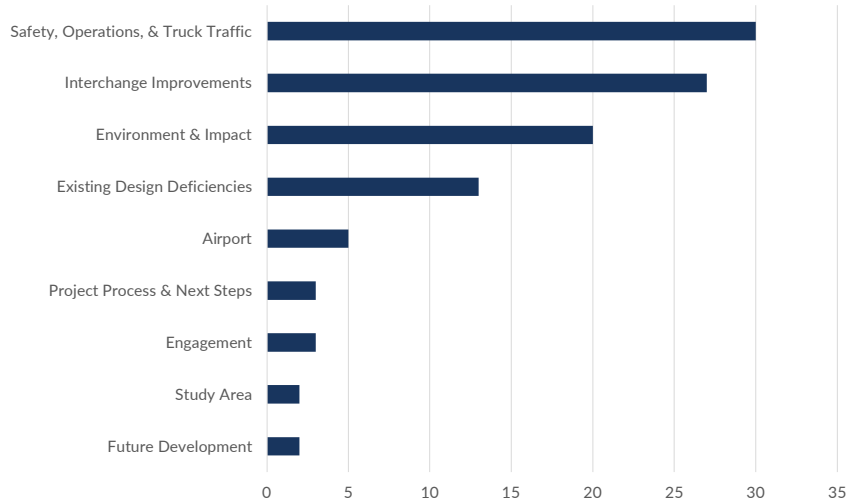


Identified Concerns  
& Problem Locations

A total of 117 people attended the meeting, submitting 26 comment forms the day of, 8 comment forms via USPS, and 2 via the study email. The online survey had 59 participants. In the online survey, 190 pins were dropped virtually on the interactive map identifying areas of concerns and problem locations.

## Summary of Comments Received

### Public Meeting #1 Comments Received



Total of  
 **105**  
Comments

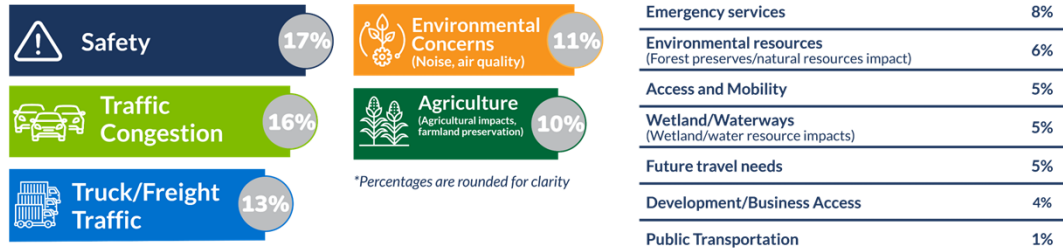
*Total includes comments received through the comment form, email, mail, the online survey, and post it notes collected during the public meeting.*

A total of 105 comments were received which includes the comments received via the comment form, email, mail, online survey, and notes left directly on the roll plots at the public meeting. Of the comments received, the most prevalent concerns were related to truck safety, truck traffic through the study area, and specific improvements to improve road safety.

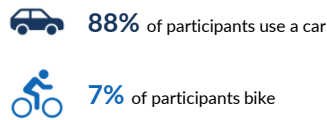
Following safety and traffic concerns, many comments were related to existing issues at the Manhattan-Monee and Wilmington-Peotone Road interchanges as well as potential impacts to the environment, farmland, wildlife, and quality of life.

## Public Meeting #1 Survey Results

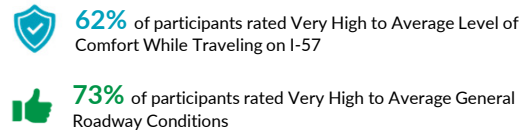
### Participants' Priorities for the Study



### Forms of Transportation Travelling Near or Within the Study Area



### Comfort Level and Roadway Conditions While Traveling on I-57



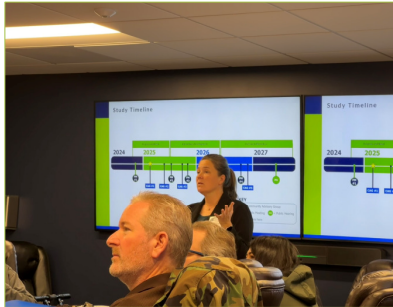
As noted, 59 people participated in the online survey. The priority areas identified in the survey were safety, traffic congestion, truck and freight traffic, environmental concerns, and agriculture. This aligned with the comments heard and submitted at the public meeting.

## CAG Meeting #1

February 25, 2025, Monee, IL



Attendees



Our first Community Advisory Group, or CAG, was held in Monee on February 25, with a total of 16 attendees.

At this meeting, the CAG was asked what transportation issues the members experience in the study area and what problems the study should address. In response, the study team heard about

- freight/truck traffic and congestion
- safety concerns
- and bicycle and pedestrian access

Concerns with accessing I-57 and Local Roadways focused on warehouse growth impacts, increased use of residential roadways, and concerns of existing connectivity within the study area especially as it relates to shift changes and workers at the warehouse facilities.

In addition, the problems to be addressed included economic potential vs the environmental factors and impacts, connectivity, handling existing congestion, and concerns at existing interchanges.

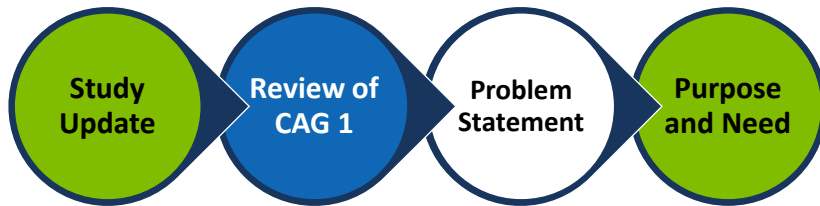
The input provided at the first CAG was used to develop the problem statement and was used in conjunction with technical analysis to identify the purpose and need of the study.

## CAG Meeting #2

July 17, 2025, Peotone,  
IL



Attendees



The problem statement, and purpose and need were presented at the second CAG meeting which was held on July 17 in Peotone.

At the 2<sup>nd</sup> meeting, the CAG was asked if the problem statement met the intent of the study and if the identified needs matched their experience within the study area.

Feedback received at the second CAG was positive in regards to the identified needs, and also emphasized the importance of the quality of life for the residents within the study area.

## PURPOSE AND NEED



Now let's review the purpose and need.

## What is a Purpose and Need Statement?

### Key NEPA Process Milestone developed with stakeholder input

**Purpose** establishes why the proposed action is being pursued

**Need** identifies the transportation problems to be addressed

#### The **Purpose and Need Statement**:

- Establishes the goals and objectives of the study
- Serves as the foundation for developing and evaluating alternatives
- Basis for selection of a preferred alternative

Based on input from the public meeting and community advisory group meetings, the study team has developed a Purpose and Need to act as the foundation of the study as it moves forward.

**Purpose** establishes why the proposed action is being pursued

**Need** identifies the transportation problems to be addressed

#### The **Purpose and Need Statement**:

Establishes the Goals and objectives of the Study

Serves as the foundation for developing and evaluating alternatives, and is the basis for selection of a Preferred Alternative

## Purpose Statement

The purpose of the I-57 Access Study is to enhance transportation safety, provide adequate transportation system capacity, and accommodate projected transportation demands along the I-57 corridor between Monee and Peotone.



The purpose of this study is to enhance transportation safety, provide adequate transportation system capacity, and accommodate projected transportation demands along the I-57 corridor between Monee and Peotone.



## Identified Need - Improve Transportation Safety in Study Area

### Address Safety Issues at Existing I-57 Interchanges

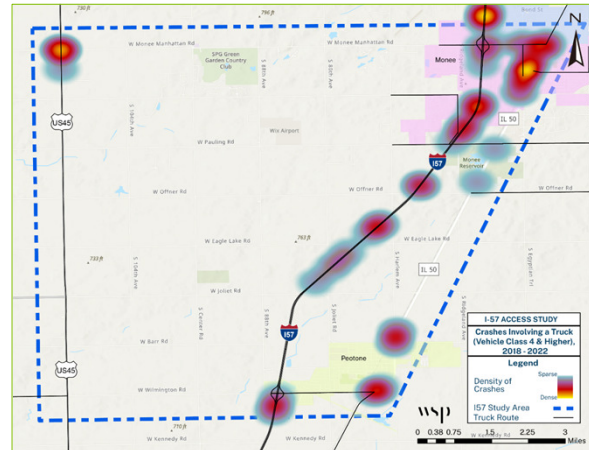
- Ramp and local road crashes in interchange area due to traffic capacity, sight distance, design issues

### Address Safety Issues at I-57 Mainline Horizontal Curve

- Design of I-57 may be contributing to fixed object and sideswipe crashes

### Address Freight Related Safety Conditions

- Few designated truck routes/accesses
- Truck “bottleneck” identified at Manhattan-Monee Road interchange



There are three identified needs for the study:

Need 1: Improve transportation safety in the study area.

This need reviewed existing geometry and crash data to identify potential areas with safety concerns. The need to improve safety will focus on:

Addressing safety concerns at existing I-57 interchanges, addressing safety issues at the I-57 mainline horizontal curve near Peotone, and addressing freight related safety conditions.

## Identified Need – Improve Predicted Capacity in Spot Locations

I-57 Access points expected to experience future traffic delays:

### Manhattan-Monee Road

Ramp delay predicted to increase, resulting in higher traffic during peak travel

### Wilmington-Peotone Road

Delay at intersections will increase due to increase in ramp traffic

There is a need for the project to improve these “spot locations” to resolve these operational constraints.

Need 2: Improve predicted capacity in spot locations.

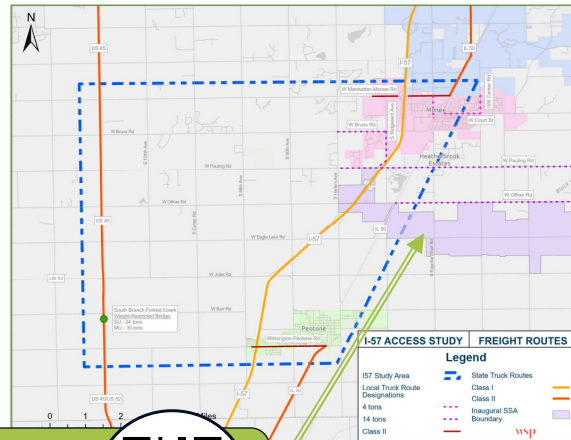
There are two existing access points, or “spot locations” that are predicted to have continued operational constraints into the future.

Manhattan Monee Road anticipates increased congestion and delay resulting in failing levels of service based on existing and future traffic which will increase queuing at this interchange especially for the southbound ramp.

Similarly, Wilmington Peotone Road will see continued delay as traffic is expected to increase.

## Identified Need – Accommodate Existing and Future Modal Interrelationships and Connectivity

- The population of Monee grew by 74.6% between 2000 and 2023. The population of Peotone grew by 31.8%
- The University Park/Monee logistics and freight cluster is expected to produce 10,541 jobs by 2026 – up from 5,336 jobs in 2014
- 84.8% of commuters in Monee and Peotone drive alone
- I-57 Freight tonnage expected to increase by 69.5%, from 39.9 million tons (2022) to 67.7 million tons (2050)



### South Suburban Airport Project Study

P3 proposals are being prepared for commercial service airfield for the Greater Chicagoland area

The final need is to accommodate existing and future modal interrelationships and connectivity.

This need is focused on supporting community travel and access to I-57, providing adequate access for study area commuters and accommodating freight, industrial, and intermodal growth through improved access to I-57.

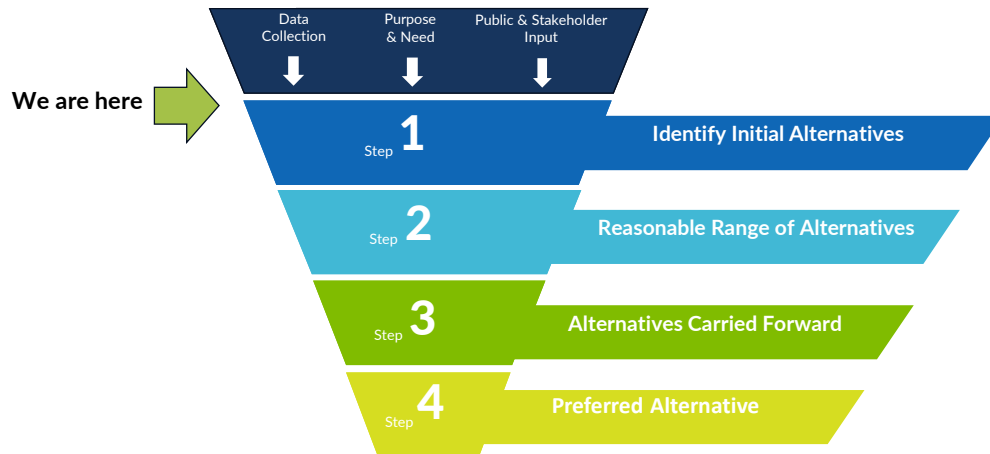
This need is based on the anticipated growth and development expected in Will County, specifically in freight and logistics and the anticipated development of the South Suburban Airport which has an active RFP requesting proposals.

## NEXT STEPS



With the Purpose and Need established, the next step for the study team is developing a range of reasonable alternatives.

## NEXT STEP: Alternatives Development



Using input from the public, information gathered through data collection, and the Purpose and Need, the study team will begin developing a reasonable range of alternatives that will be screened for further evaluation and ultimately be refined and evaluated to select the Preferred Alternative. Throughout the study, a No Build Alternative will be carried forward, which assumes no improvements and only regular roadway maintenance.

As we begin identifying initial and reasonable alternatives to be considered, we are looking for your thoughts on what solutions could address the needs identified. In the next room, we invite you to offer those solutions on the large map and on comment cards.



## WHAT'S NEXT

- Developing a wide range of alternatives
- CAG #3 – Spring 2026
- Public Meeting #3 – Summer 2026

Following this meeting, the next steps will be

- Developing a wide range of alternatives to meet the purpose and need of the study
- Our 3<sup>rd</sup> CAG meeting targeted for the Spring of 2026 and
- Public Meeting #3 anticipated in the Summer of 2026

## HOW TO PROVIDE FEEDBACK AND STAY INVOLVED



- Drop your completed comment form in the box near the exit
- Complete the Purpose and Need survey



Email the study team: **AccessI57Study@gmail.com**



Mail in your comment form: **Illinois Department of Transportation  
Bureau of Programming  
Attn: Anna Kutryn, P.E.  
201 West Center Court  
Schaumburg, IL 60196-1096**



Check out the study website - [Tiny.cc/AccessI57](https://tiny.cc/AccessI57)

***Only comments received by September 16 will become part of the official meeting record***

There are multiple ways to have your voice heard:

- Complete a comment card and drop it in the comment box today.
- Take our purpose and need survey.

After this public meeting, you can continue to engage with our team via the study website, email, or you can also mail us your comment forms at the address provided.

Please note that comments can be submitted via email or mail at any time, however only comments received by September 16 will become part of the official meeting record.

## PURPOSE AND NEED SURVEY 2025



**Share your feedback, perspectives, and experience with our team!**

**Scan Here**



**Complete this survey by September 16, 2025**

The study team has an interactive online survey for you to share your feedback, perspectives, and experiences within the study area regarding conditions of the roadway, local traffic, and access. The QR code is on the screen, and available in the exhibit area. You can also access the survey after the meeting through the study website. This feedback will be used to complement the data collection and help shape the Purpose and Need for the study.





THANK YOU

The graphic features the text "THANK YOU" in a dark blue, sans-serif font, centered in the upper half of a white rectangular area. Below the text is a stylized graphic of a road with white dashed lines curving to the right. The road is bordered by green and blue swooshes. To the right of the road graphic is a solid dark blue triangular shape pointing towards the bottom right corner.

Thank you all for coming today to join our public meeting and providing your feedback! We look forward to hearing from you and your ongoing collaboration with our study team! Please continue to the exhibit area where the study team is available to answer any questions.

**THIS PRESENTATION WILL  
BEGIN AGAIN MOMENTARILY**

