

APPENDIX B

Coordination With Local Officials



FILE COPY

Illinois Department of Transportation

Office of Highways Project Implementation / Region 1 / District 1
201 West Center Court / Schaumburg, Illinois 60196-1096

Project and Environmental Studies
Interstate 55 (I-55) – Managed Lanes
Interstate 355 (I-355) to Interstate 90/94 (I-90/94)
DuPage and Cook Counties

May 4, 2019

«Full_Name»
«Title»
«Municipality»
«Address_1»
«CityState__Zip»

Dear «Alt_Salutation_»:

The Illinois Department of Transportation (Department) has recently concluded preliminary engineering and environmental studies (Phase I) for the improvement of Interstate 55 (I-55) from Interstate 355 (I-355) to Interstate 90/94 (I-90/94). The improvement consists of the addition of one lane along I-55 in each direction between I-355 and east of Interstate 294 (I-294) and two lanes in each direction from east of I-294 to I-90/94, the most congested portion along the I-55 corridor. The improvement also consists of noise wall installation and drainage improvements. A previous Phase I study was completed in November 2016 for one managed lane in each direction. At this time, funding for Phase II is included in the Department's Fiscal Year 2019-2024 Proposed Highway Improvement Program. Funding for construction (Phase III) is not included in the current program. The Department is currently developing a financial plan to help identify funding strategies and evaluating other mechanisms to deliver this much needed project to the region.

As part of the environmental studies for this proposed project, projected future traffic noise levels were evaluated for lands either currently under your jurisdiction, or land that may come under your jurisdiction, near the proposed roadway improvement. Attached for your information is an exhibit showing the proposed noise barriers along the corridor. Please note that in addition to the proposed noise barriers approved with the previous study, two additional barriers are now proposed, shown in blue on the attached exhibit. In order to determine if the two additional barriers will be implemented, viewpoint solicitation needs to occur after the project's final design is approved. If the project's final design is different from the preliminary design, the Department will determine if revisions to the traffic noise analysis are necessary. A final decision on noise abatement will not be made until the project's final design is approved and the public involvement process is complete.

«Full_Name»

May 4, 2019

Page 2

The study area includes undeveloped or agriculture land that is zoned for uses other than agriculture, or land that is planned for future development in a comprehensive land use plan. Attached for your information is an exhibit showing the predicted design year (2040) build traffic noise levels for these undeveloped lands identified along the project corridor. The Department recommends that you carefully consider the future predicted noise levels to avoid potential issues of public concern over incompatible noise levels.

To help with your future planning and discernment regarding permitting decisions, the Department encourages you to obtain the Federal Highway Administration (FHWA) publication titled, *Entering the Quiet Zone: Noise Compatible Land Use Planning* from their website at:
http://www.fhwa.dot.gov/environment/noise/noise_compatible_planning/federal_approach/land_use/quietzone.pdf.

For additional information regarding traffic noise, regulations and policy, noise analyses or noise abatement, visit the Department's website at:
<http://www.idot.illinois.gov/transportation-system/environment/index>
under the Community tab.

If you have any additional questions, require clarifications or wish to discuss traffic noise further please contact, Corey Smith, P.E., Project Manager, at (847) 705-4103.

Very truly yours,

Anthony J. Quigley, P.E.
Region One Engineer

By: 
Steven E. Schilke, P.E.
Project and Environmental Studies Section Chief

Attachment

«CC»

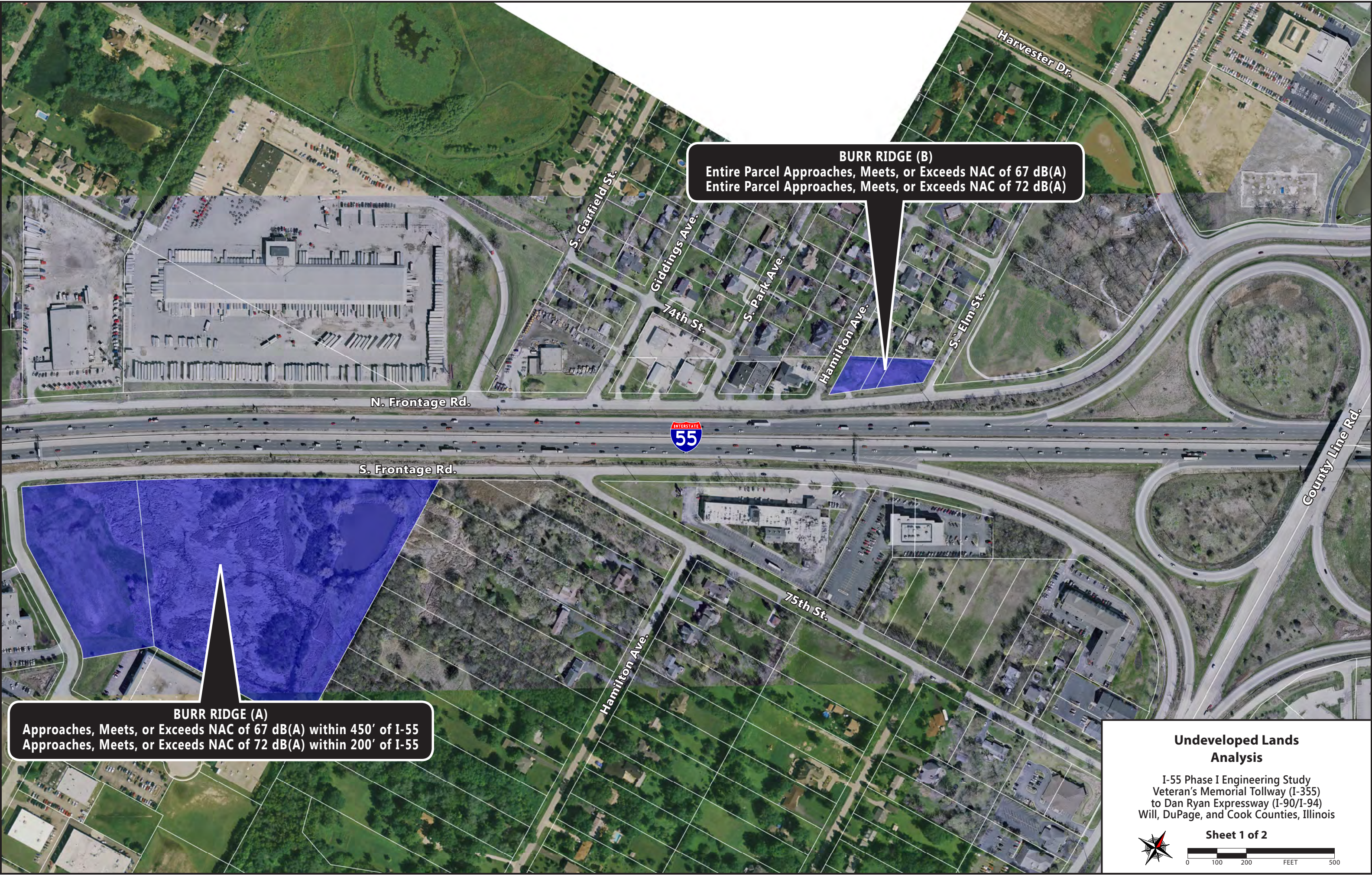
bcc: File

S:\Geni\WP\p&es\CONSULT\Projects - Active\I-55 from I-355 to I-90-94
2x2\Environmental\Noise\Undeveloped Lands Letter\2019.3.14_IDOT_I-55 ML_Undeveloped
Lands Letter.docx

Full Name	Title	Municipality	Address 1	City, State, Zip	Alt. Salutation	CC
Mr. Steve Stricker	Village Administrator	Village of Burr Ridge	7660 County Line Road	Burr Ridge, IL 60527	Mr. Stricker	cc: David Preissig, P.E
Mr. David Reifman	Commissioner of Planning and Development	City of Chicago	121 N. LaSalle Street	Chicago, IL 60602	Mr. Reifman	

POTENTIAL NOISE WALL LOCATIONS

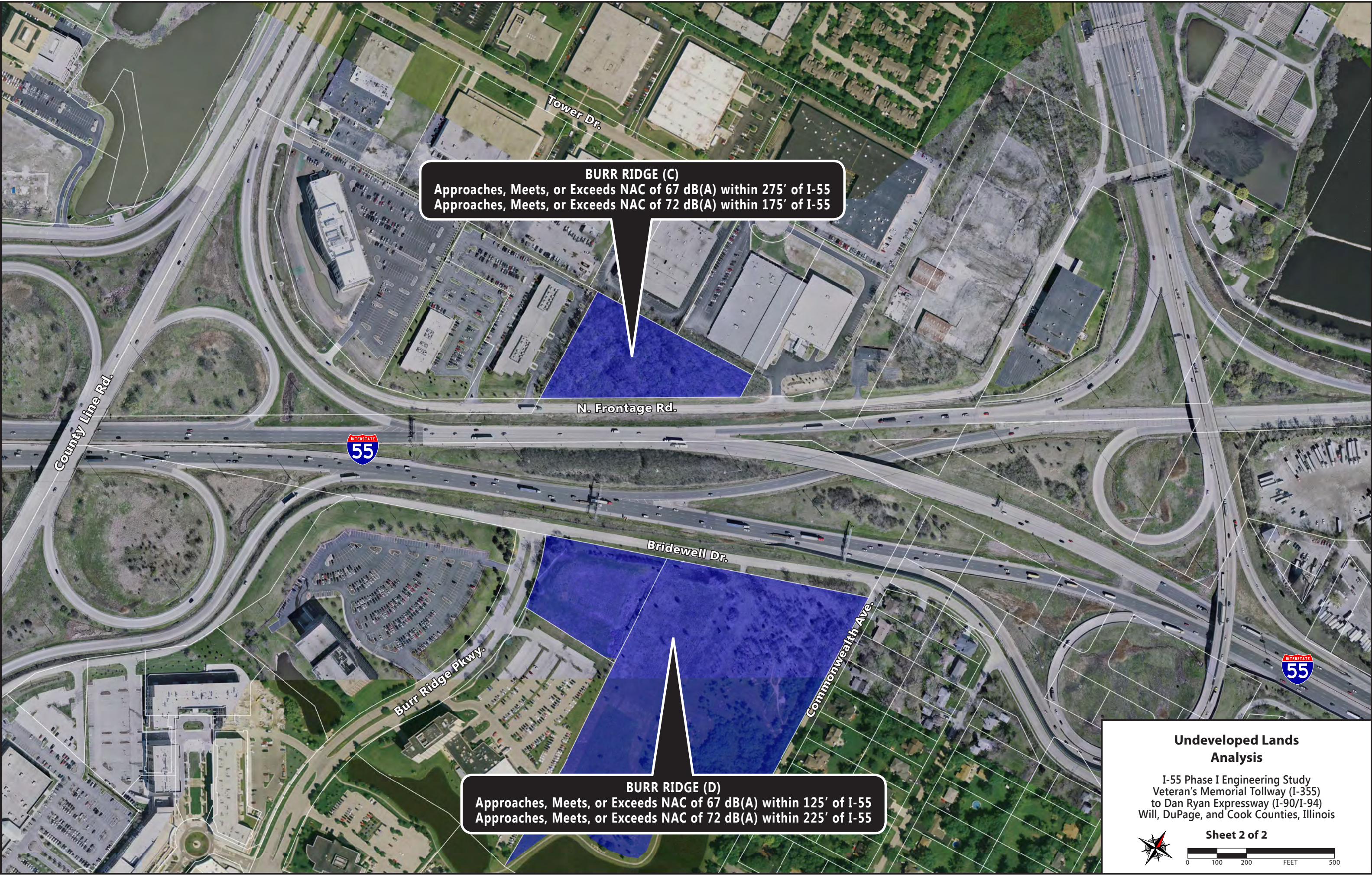




BURR RIDGE (B)
Entire Parcel Approaches, Meets, or Exceeds NAC of 67 dB(A)
Entire Parcel Approaches, Meets, or Exceeds NAC of 72 dB(A)

BURR RIDGE (A)
Approaches, Meets, or Exceeds NAC of 67 dB(A) within 450' of I-55
Approaches, Meets, or Exceeds NAC of 72 dB(A) within 200' of I-55

Undeveloped Lands Analysis
I-55 Phase I Engineering Study
Veteran's Memorial Tollway (I-355)
to Dan Ryan Expressway (I-90/I-94)
Will, DuPage, and Cook Counties, Illinois

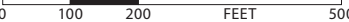


BURR RIDGE (C)
Approaches, Meets, or Exceeds NAC of 67 dB(A) within 275' of I-55
Approaches, Meets, or Exceeds NAC of 72 dB(A) within 175' of I-55

BURR RIDGE (D)
Approaches, Meets, or Exceeds NAC of 67 dB(A) within 125' of I-55
Approaches, Meets, or Exceeds NAC of 72 dB(A) within 225' of I-55

**Undeveloped Lands
Analysis**

I-55 Phase I Engineering Study
Veteran's Memorial Tollway (I-355)
to Dan Ryan Expressway (I-90/I-94)
Will, DuPage, and Cook Counties, Illinois



S. Laramie Ave.

Ed Meyer Rd.

Canal Bank Dr.

ILLINOIS
50

CHICAGO (B)
Approaches, Meets, or Exceeds NAC of 67 dB(A) within 250' of I-55
Does Not Approach, Meet, or Exceed NAC of 72 dB(A)

INTERSTATE
55

LeClaire-Hearst Park

W. 44th St.

S. Leamington Ave.

W. 43rd St.

S. Cicero Ave.

W. 43rd St.

CHICAGO (A)
Does Not Approach, Meet, or Exceed NAC of 67 dB(A)
Does Not Approach, Meet, or Exceed NAC of 72 dB(A)

S. Lawler Ave.

W. 44th St.

S. Lavergne Ave.

W. 44th Pl.

S. Laporte Ave.

W. 44th St.

**Undeveloped Lands
Analysis**

I-55 Phase I Engineering Study
Veteran's Memorial Tollway (I-355)
to Dan Ryan Expressway (I-90/I-94)
Will, DuPage, and Cook Counties, Illinois

Sheet 1 of 2





CHICAGO (F)
Does Not Approach, Meet, or Exceed NAC of 67 dB(A)
Does Not Approach, Meet, or Exceed NAC of 72 dB(A)

CHICAGO (H)
Does Not Approach, Meet, or Exceed NAC of 67 dB(A)
Does Not Approach, Meet, or Exceed NAC of 72 dB(A)

CHICAGO (E)
Approaches, Meets, or Exceeds NAC of 67 dB(A) within 100' of I-55
Does Not Approach, Meet, or Exceed NAC of 72 dB(A)

CHICAGO (J)
Does Not Approach, Meet, or Exceed NAC of 67 dB(A)
Does Not Approach, Meet, or Exceed NAC of 72 dB(A)

CHICAGO (D)
Does Not Approach, Meet, or Exceed NAC of 67 dB(A)
Does Not Approach, Meet, or Exceed NAC of 72 dB(A)

CHICAGO (I)
Does Not Approach, Meet, or Exceed NAC of 67 dB(A)
Does Not Approach, Meet, or Exceed NAC of 72 dB(A)

CHICAGO (G)
Approaches, Meets, or Exceeds NAC of 67 dB(A) within 225' of I-55
Does Not Approach, Meet, or Exceed NAC of 72 dB(A)

CHICAGO (K)
Does Not Approach, Meet, or Exceed NAC of 67 dB(A)
Does Not Approach, Meet, or Exceed NAC of 72 dB(A)

CHICAGO (C)
Entire Parcel Approaches, Meets, or Exceeds NAC of 67 dB(A)
Does Not Approach, Meet, or Exceed NAC of 72 dB(A)

Undeveloped Lands Analysis
I-55 Phase I Engineering Study
Veteran's Memorial Tollway (I-355)
to Dan Ryan Expressway (I-90/I-94)
Will, DuPage, and Cook Counties, Illinois



Illinois Department of Transportation

Office of Highways Project Implementation / Region 1 / District 1
201 West Center Court / Schaumburg, Illinois 60196-1096

June 8, 2016

The Honorable Kathleen Weaver
Mayor
City of Darien
1702 Plainfield Road
Darien IL, 60561

Dear The Honorable Weaver:

Re: Traffic Noise Information for Undeveloped Lands
I-55 Phase I Engineering Study
I-355 to I-90/94

The Illinois Department of Transportation is currently conducting a preliminary engineering and environmental (Phase I) study for I-55 from I-355 to I-90/94 in DuPage and Cook Counties. The scope of work for this improvement consists of the addition of one managed lane in each direction within the existing median of I-55, drainage improvements, and noise walls. The existing travel lanes along I-55 will remain free but the new managed lane is proposed to be tolled as an Express Toll Lane.

As part of the Phase I Study for this project, projected future traffic noise levels were evaluated for lands (either currently under your jurisdiction or land that may come under your jurisdiction) near the proposed roadway improvement. For your information, this study area includes land that may be planned for future development in a comprehensive land use plan.

This letter includes an exhibit showing information regarding predicted Design Year (2040) Build condition traffic noise levels for the undeveloped lands along the project corridor within your jurisdiction. This information is for your use in planning and permitting future development. We recommend that you carefully consider the future predicted noise levels to avoid potential issues of public concern over incompatible noise levels.

The exhibit shows currently vacant/future development areas in blue, and also indicates the distances from the proposed I-55 mainline edge of pavement (based on the proposed improvement) within which Build condition sound levels are predicted to approach, meet, or exceed FHWA Noise Abatement Criteria (NAC) for two types of land use categories:

- Residential areas, schools, places of worship, medical offices, cemeteries, day care centers, recreational areas, and institutional uses; the NAC for these lands is 67 dB(A)
- Hotels, restaurants, and offices; the NAC for these lands 72 dB(A)

To help with your future planning and discernment regarding permitting decisions, we encourage you to obtain the Federal Highway Administration (FHWA) publication titled *Entering the Quiet Zone: Noise Compatible Land Use Planning*. This publication can be obtained from the FHWA website:

https://www.fhwa.dot.gov/environment/noise/noise_compatible_planning/federal_approach/land_use/

For additional information regarding traffic noise, regulations and policy, noise analyses or noise abatement, we encourage you to visit the Department's web site at: <http://www.dot.il.gov/>. Click on the "Environment" link and then the "Traffic Noise" link to access this information.

For additional information regarding the I-55 Managed Lane Study, please visit the project website at <http://www.i55managedlaneproject.org/>.

If you have any additional questions, require clarifications or wish to discuss traffic noise further please let us know by contacting Sam Mead, Environmental Studies Unit Head at (847) 705-4101 or John Baldauf, P.E., Project Manager at (847) 705-4103.

Very truly yours,



John Fortmann, P.E.
Region One Engineer

Enclosures



DARIEN (B)
Entire Parcel Approaches, Meets, or Exceeds NAC of 67 dB(A)
Approaches, Meets, or Exceeds NAC of 72 dB(A) within 250' of I-55

DARIEN (A)
Entire Parcel Approaches, Meets, or Exceeds NAC of 67 dB(A)
Entire Parcel Approaches, Meets, or Exceeds NAC of 72 dB(A)

**Undeveloped Lands
Analysis**

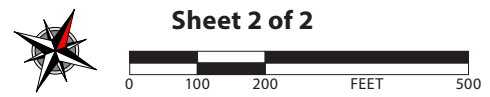
I-55 Phase I Engineering Study
Veteran's Memorial Tollway (I-355)
to Dan Ryan Expressway (I-90/I-94)
Will, DuPage, and Cook Counties, Illinois



DARIEN (C)
Approaches, Meets, or Exceeds NAC of 67 dB(A) within 400' of I-55
Does Not Approach, Meet, or Exceed NAC of 72 dB(A)



**Undeveloped Lands
Analysis**
I-55 Phase I Engineering Study
Veteran's Memorial Tollway (I-355)
to Dan Ryan Expressway (I-90/I-94)
Will, DuPage, and Cook Counties, Illinois





Illinois Department of Transportation

Office of Highways Project Implementation / Region 1 / District 1
201 West Center Court / Schaumburg, Illinois 60196-1096

June 8, 2016

The Honorable Dan Cronin
County Board Chairman
County of DuPage
421 N. County Farm Road
Wheaton IL, 60187

Dear The Honorable Cronin:

Re: Traffic Noise Information for Undeveloped Lands
I-55 Phase I Engineering Study
I-355 to I-90/94

The Illinois Department of Transportation is currently conducting a preliminary engineering and environmental (Phase I) study for I-55 from I-355 to I-90/94 in DuPage and Cook Counties. The scope of work for this improvement consists of the addition of one managed lane in each direction within the existing median of I-55, drainage improvements, and noise walls. The existing travel lanes along I-55 will remain free but the new managed lane is proposed to be tolled as an Express Toll Lane.

As part of the Phase I Study for this project, projected future traffic noise levels were evaluated for lands (either currently under your jurisdiction or land that may come under your jurisdiction) near the proposed roadway improvement. For your information, this study area includes land that may be planned for future development in a comprehensive land use plan.

This letter includes an exhibit showing information regarding predicted Design Year (2040) Build condition traffic noise levels for the undeveloped lands along the project corridor within your jurisdiction. This information is for your use in planning and permitting future development. We recommend that you carefully consider the future predicted noise levels to avoid potential issues of public concern over incompatible noise levels.

The exhibit shows currently vacant/future development areas in blue, and also indicates the distances from the proposed I-55 mainline edge of pavement (based on the proposed improvement) within which Build condition sound levels are predicted to approach, meet, or exceed FHWA Noise Abatement Criteria (NAC) for two types of land use categories:

- Residential areas, schools, places of worship, medical offices, cemeteries, day care centers, recreational areas, and institutional uses; the NAC for these lands is 67 dB(A)
- Hotels, restaurants, and offices; the NAC for these lands 72 dB(A)

To help with your future planning and discernment regarding permitting decisions, we encourage you to obtain the Federal Highway Administration (FHWA) publication titled *Entering the Quiet Zone: Noise Compatible Land Use Planning*. This publication can be obtained from the FHWA website:

https://www.fhwa.dot.gov/environment/noise/noise_compatible_planning/federal_approach/land_use/

For additional information regarding traffic noise, regulations and policy, noise analyses or noise abatement, we encourage you to visit the Department's web site at: <http://www.dot.il.gov/>. Click on the "Environment" link and then the "Traffic Noise" link to access this information.

For additional information regarding the I-55 Managed Lane Study, please visit the project website at <http://www.i55managedlaneproject.org/>.

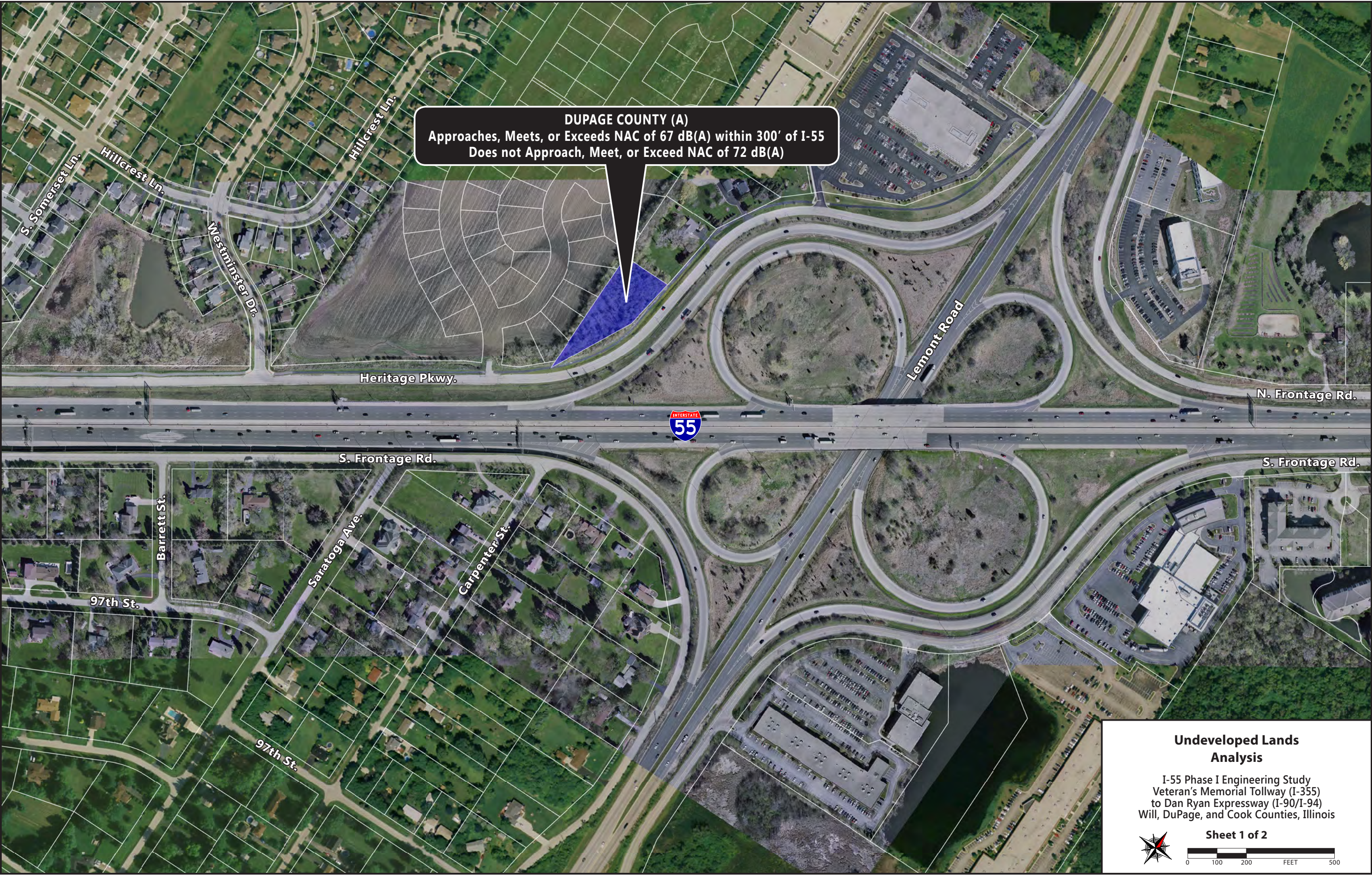
If you have any additional questions, require clarifications or wish to discuss traffic noise further please let us know by contacting Sam Mead, Environmental Studies Unit Head at (847) 705-4101 or John Baldauf, P.E., Project Manager at (847) 705-4103.

Very truly yours,



John Fortmann, P.E.
Region One Engineer

Enclosures



DUPAGE COUNTY (A)
Approaches, Meets, or Exceeds NAC of 67 dB(A) within 300' of I-55
Does not Approach, Meet, or Exceed NAC of 72 dB(A)



Undeveloped Lands Analysis

I-55 Phase I Engineering Study
Veteran's Memorial Tollway (I-355)
to Dan Ryan Expressway (I-90/I-94)
Will, DuPage, and Cook Counties, Illinois

Sheet 1 of 2

DUPAGE COUNTY (B)
Approaches, Meets, or Exceeds NAC of 67 dB(A) within 425' of I-55
Approaches, Meets, or Exceeds NAC of 72 dB(A) within 250' of I-55

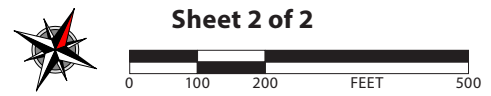
DUPAGE COUNTY (C)
Approaches, Meets, or Exceeds NAC of 67 dB(A) within 225' of I-55
Approaches, Meets, or Exceeds NAC of 72 dB(A) within 150' of I-55

DUPAGE COUNTY (D)
Approaches, Meets, or Exceeds NAC of 67 dB(A) within 475' of I-55
Approaches, Meets, or Exceeds NAC of 72 dB(A) within 150' of I-55

Undeveloped Lands Analysis

I-55 Phase I Engineering Study
Veteran's Memorial Tollway (I-355)
to Dan Ryan Expressway (I-90/I-94)
Will, DuPage, and Cook Counties, Illinois

Sheet 2 of 2



0 100 200 FEET 500





Illinois Department of Transportation

Office of Highways Project Implementation / Region 1 / District 1
201 West Center Court / Schaumburg, Illinois 60196-1096

June 8, 2016

The Honorable Noel Cummings
President
Village of Hodgkins
8990 Lyons Street
Hodgkins IL, 60525

Dear The Honorable Cummings:

Re: Traffic Noise Information for Undeveloped Lands
I-55 Phase I Engineering Study
I-355 to I-90/94

The Illinois Department of Transportation is currently conducting a preliminary engineering and environmental (Phase I) study for I-55 from I-355 to I-90/94 in DuPage and Cook Counties. The scope of work for this improvement consists of the addition of one managed lane in each direction within the existing median of I-55, drainage improvements, and noise walls. The existing travel lanes along I-55 will remain free but the new managed lane is proposed to be tolled as an Express Toll Lane.

As part of the Phase I Study for this project, projected future traffic noise levels were evaluated for lands (either currently under your jurisdiction or land that may come under your jurisdiction) near the proposed roadway improvement. For your information, this study area includes land that may be planned for future development in a comprehensive land use plan.

This letter includes an exhibit showing information regarding predicted Design Year (2040) Build condition traffic noise levels for the undeveloped lands along the project corridor within your jurisdiction. This information is for your use in planning and permitting future development. We recommend that you carefully consider the future predicted noise levels to avoid potential issues of public concern over incompatible noise levels.

The exhibit shows currently vacant/future development areas in blue, and also indicates the distances from the proposed I-55 mainline edge of pavement (based on the proposed improvement) within which Build condition sound levels are predicted to approach, meet, or exceed FHWA Noise Abatement Criteria (NAC) for two types of land use categories:

- Residential areas, schools, places of worship, medical offices, cemeteries, day care centers, recreational areas, and institutional uses; the NAC for these lands is 67 dB(A)
- Hotels, restaurants, and offices; the NAC for these lands 72 dB(A)

To help with your future planning and discernment regarding permitting decisions, we encourage you to obtain the Federal Highway Administration (FHWA) publication titled *Entering the Quiet Zone: Noise Compatible Land Use Planning*. This publication can be obtained from the FHWA website:

https://www.fhwa.dot.gov/environment/noise/noise_compatible_planning/federal_approach/land_use/

For additional information regarding traffic noise, regulations and policy, noise analyses or noise abatement, we encourage you to visit the Department's web site at: <http://www.dot.il.gov/>. Click on the "Environment" link and then the "Traffic Noise" link to access this information.

For additional information regarding the I-55 Managed Lane Study, please visit the project website at <http://www.i55managedlaneproject.org/>.

If you have any additional questions, require clarifications or wish to discuss traffic noise further please let us know by contacting Sam Mead, Environmental Studies Unit Head at (847) 705-4101 or John Baldauf, P.E., Project Manager at (847) 705-4103.

Very truly yours,



John Fortmann, P.E.
Region One Engineer

Enclosures

HODGKINS (B)
Does Not Approach, Meet, or Exceed NAC of 67 dB(A)
Does Not Approach, Meet, or Exceed NAC of 72 dB(A)

HODGKINS (A)
Approaches, Meets, or Exceeds NAC of 67 dB(A) within 225' of I-55
Does Not Approach, Meet, or Exceed NAC of 72 dB(A)

**Undeveloped Lands
Analysis**

I-55 Phase I Engineering Study
Veteran's Memorial Tollway (I-355)
to Dan Ryan Expressway (I-90/I-94)
Will, DuPage, and Cook Counties, Illinois

Sheet 1 of 1





Illinois Department of Transportation

Office of Highways Project Implementation / Region 1 / District 1
201 West Center Court / Schaumburg, Illinois 60196-1096

June 8, 2016

The Honorable Tom Hinshaw
Mayor
Village of Indian Head Park
201 Acacia Drive
Indian Head Park IL, 60525

Dear The Honorable Hinshaw:

Re: Traffic Noise Information for Undeveloped Lands
I-55 Phase I Engineering Study
I-355 to I-90/94

The Illinois Department of Transportation is currently conducting a preliminary engineering and environmental (Phase I) study for I-55 from I-355 to I-90/94 in DuPage and Cook Counties. The scope of work for this improvement consists of the addition of one managed lane in each direction within the existing median of I-55, drainage improvements, and noise walls. The existing travel lanes along I-55 will remain free but the new managed lane is proposed to be tolled as an Express Toll Lane.

As part of the Phase I Study for this project, projected future traffic noise levels were evaluated for lands (either currently under your jurisdiction or land that may come under your jurisdiction) near the proposed roadway improvement. For your information, this study area includes land that may be planned for future development in a comprehensive land use plan.

This letter includes an exhibit showing information regarding predicted Design Year (2040) Build condition traffic noise levels for the undeveloped lands along the project corridor within your jurisdiction. This information is for your use in planning and permitting future development. We recommend that you carefully consider the future predicted noise levels to avoid potential issues of public concern over incompatible noise levels.

The exhibit shows currently vacant/future development areas in blue, and also indicates the distances from the proposed I-55 mainline edge of pavement (based on the proposed improvement) within which Build condition sound levels are predicted to approach, meet, or exceed FHWA Noise Abatement Criteria (NAC) for two types of land use categories:

- Residential areas, schools, places of worship, medical offices, cemeteries, day care centers, recreational areas, and institutional uses; the NAC for these lands is 67 dB(A)
- Hotels, restaurants, and offices; the NAC for these lands 72 dB(A)

To help with your future planning and discernment regarding permitting decisions, we encourage you to obtain the Federal Highway Administration (FHWA) publication titled *Entering the Quiet Zone: Noise Compatible Land Use Planning*. This publication can be obtained from the FHWA website:

https://www.fhwa.dot.gov/environment/noise/noise_compatible_planning/federal_approach/land_use/

For additional information regarding traffic noise, regulations and policy, noise analyses or noise abatement, we encourage you to visit the Department's web site at: <http://www.dot.il.gov/>. Click on the "Environment" link and then the "Traffic Noise" link to access this information.

For additional information regarding the I-55 Managed Lane Study, please visit the project website at <http://www.i55managedlaneproject.org/>.

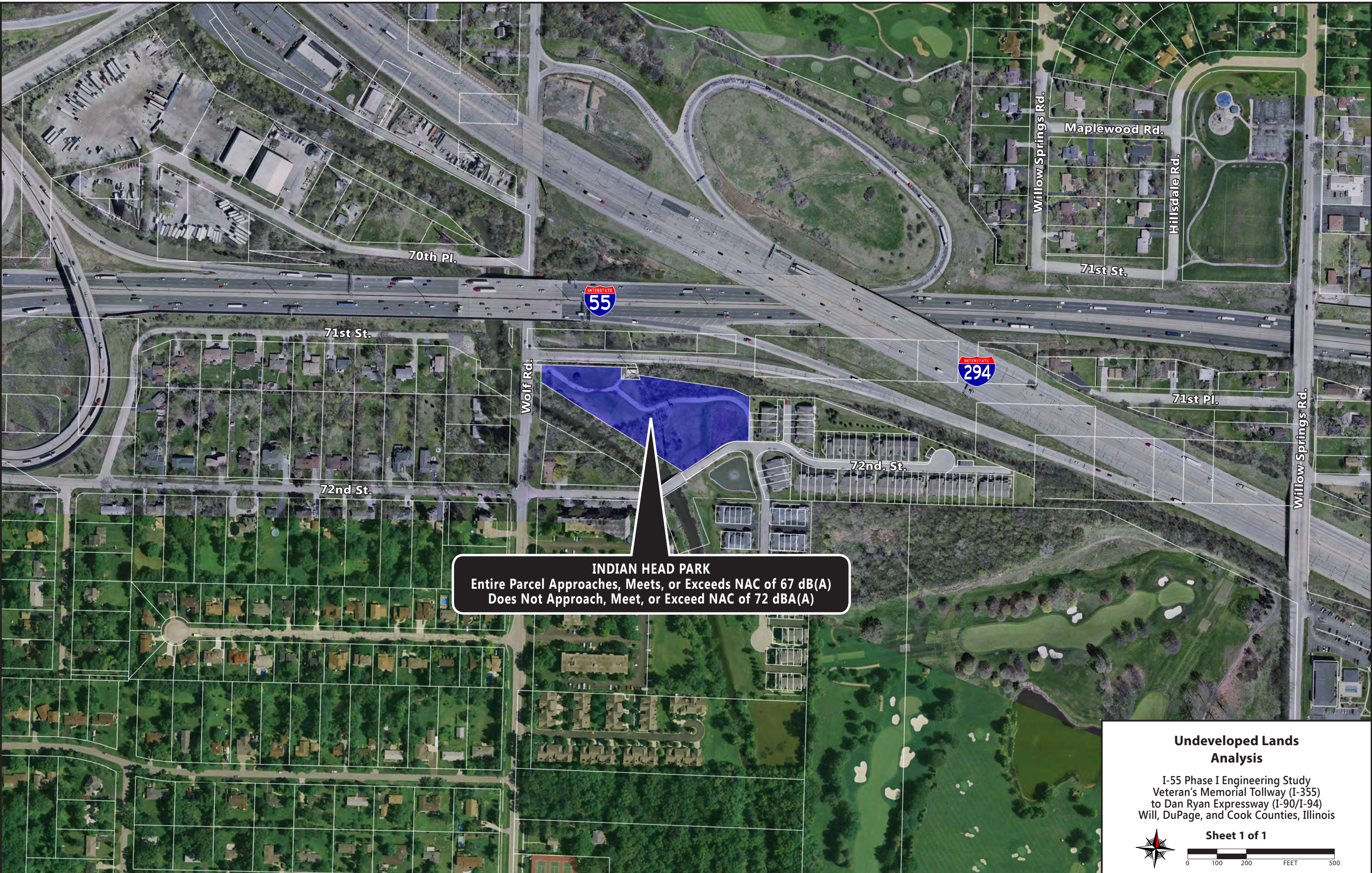
If you have any additional questions, require clarifications or wish to discuss traffic noise further please let us know by contacting Sam Mead, Environmental Studies Unit Head at (847) 705-4101 or John Baldauf, P.E., Project Manager at (847) 705-4103.

Very truly yours,



John Fortmann, P.E.
Region One Engineer

Enclosures





INDIAN HEAD PARK
Entire Parcel Approaches, Meets, or Exceeds NAC of 67 dB(A)
Does Not Approach, Meet, or Exceed NAC of 72 dBA(A)

Undeveloped Lands Analysis

I-55 Phase I Engineering Study
Veteran's Memorial Tollway (I-355)
to Dan Ryan Expressway (I-90/I-94)
Will, DuPage, and Cook Counties, Illinois

Sheet 1 of 1





Illinois Department of Transportation

Office of Highways Project Implementation / Region 1 / District 1
201 West Center Court / Schaumburg, Illinois 60196-1096

June 8, 2016

The Honorable Frank Trilla
Mayor
Village of Willowbrook
835 Midway Drive
Willowbrook IL, 60527

Dear The Honorable Trilla:

Re: Traffic Noise Information for Undeveloped Lands
I-55 Phase I Engineering Study
I-355 to I-90/94

The Illinois Department of Transportation is currently conducting a preliminary engineering and environmental (Phase I) study for I-55 from I-355 to I-90/94 in DuPage and Cook Counties. The scope of work for this improvement consists of the addition of one managed lane in each direction within the existing median of I-55, drainage improvements, and noise walls. The existing travel lanes along I-55 will remain free but the new managed lane is proposed to be tolled as an Express Toll Lane.

As part of the Phase I Study for this project, projected future traffic noise levels were evaluated for lands (either currently under your jurisdiction or land that may come under your jurisdiction) near the proposed roadway improvement. For your information, this study area includes land that may be planned for future development in a comprehensive land use plan.

This letter includes an exhibit showing information regarding predicted Design Year (2040) Build condition traffic noise levels for the undeveloped lands along the project corridor within your jurisdiction. This information is for your use in planning and permitting future development. We recommend that you carefully consider the future predicted noise levels to avoid potential issues of public concern over incompatible noise levels.

The exhibit shows currently vacant/future development areas in blue, and also indicates the distances from the proposed I-55 mainline edge of pavement (based on the proposed improvement) within which Build condition sound levels are predicted to approach, meet, or exceed FHWA Noise Abatement Criteria (NAC) for two types of land use categories:

- Residential areas, schools, places of worship, medical offices, cemeteries, day care centers, recreational areas, and institutional uses; the NAC for these lands is 67 dB(A)
- Hotels, restaurants, and offices; the NAC for these lands 72 dB(A)

To help with your future planning and discernment regarding permitting decisions, we encourage you to obtain the Federal Highway Administration (FHWA) publication titled *Entering the Quiet Zone: Noise Compatible Land Use Planning*. This publication can be obtained from the FHWA website:

https://www.fhwa.dot.gov/environment/noise/noise_compatible_planning/federal_approach/land_use/

For additional information regarding traffic noise, regulations and policy, noise analyses or noise abatement, we encourage you to visit the Department's web site at: <http://www.dot.il.gov/>. Click on the "Environment" link and then the "Traffic Noise" link to access this information.

For additional information regarding the I-55 Managed Lane Study, please visit the project website at <http://www.i55managedlaneproject.org/>.

If you have any additional questions, require clarifications or wish to discuss traffic noise further please let us know by contacting Sam Mead, Environmental Studies Unit Head at (847) 705-4101 or John Baldauf, P.E., Project Manager at (847) 705-4103.

Very truly yours,



John Fortmann, P.E.
Region One Engineer

Enclosures

WILLOWBROOK
Entire Parcel Approaches, Meets, or Exceeds NAC of 67 dB(A)
Approaches, Meets, or Exceeds NAC of 72 dB(A) within 175' of I-55

ILLINOIS
83

INTERSTATE
55

Kingery Hwy.

79th St.

S. Quincy St.

Griffin Way

S. Madison St.

Executive Dr.

N. Frontage Rd.

S. Frontage Rd.

S. Frontage Rd.

Shore Dr.

S. Madison St.

79th St.

**Undeveloped Lands
Analysis**
I-55 Phase I Engineering Study
Veteran's Memorial Tollway (I-355)
to Dan Ryan Expressway (I-90/I-94)
Will, DuPage, and Cook Counties, Illinois

Sheet 1 of 1

