

# I-94 AT 111TH STREET INTERCHANGE

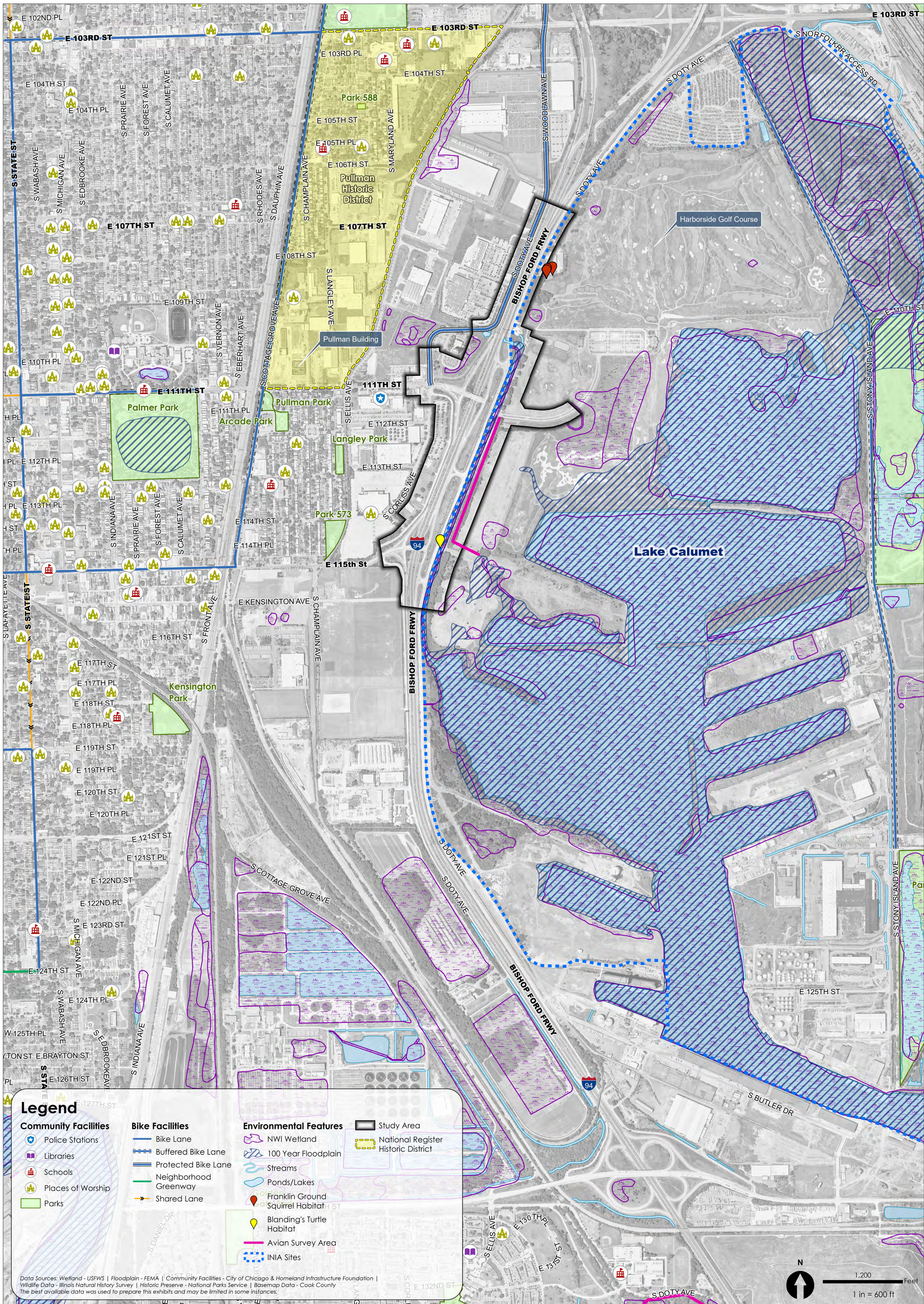
## Study Limits Map





# I-94 AT 111TH STREET INTERCHANGE

## Environmental & Community Resources

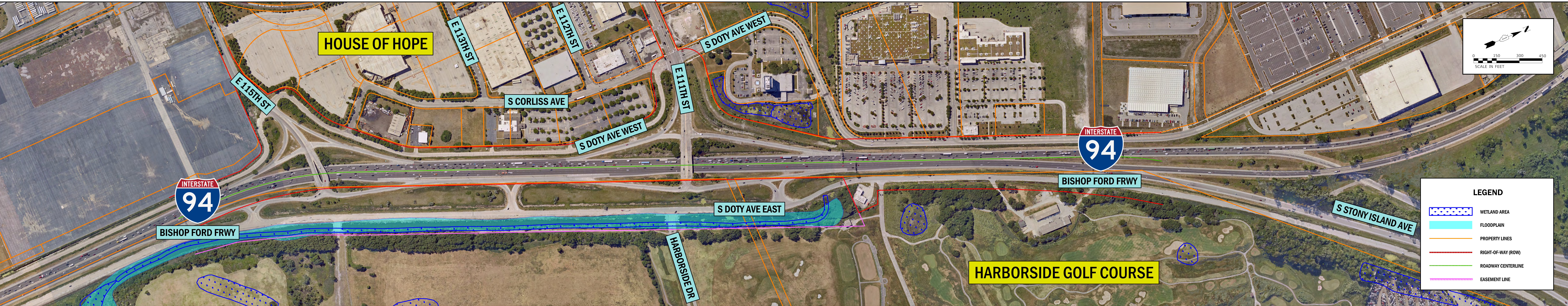




# I-94 AT 111TH STREET INTERCHANGE

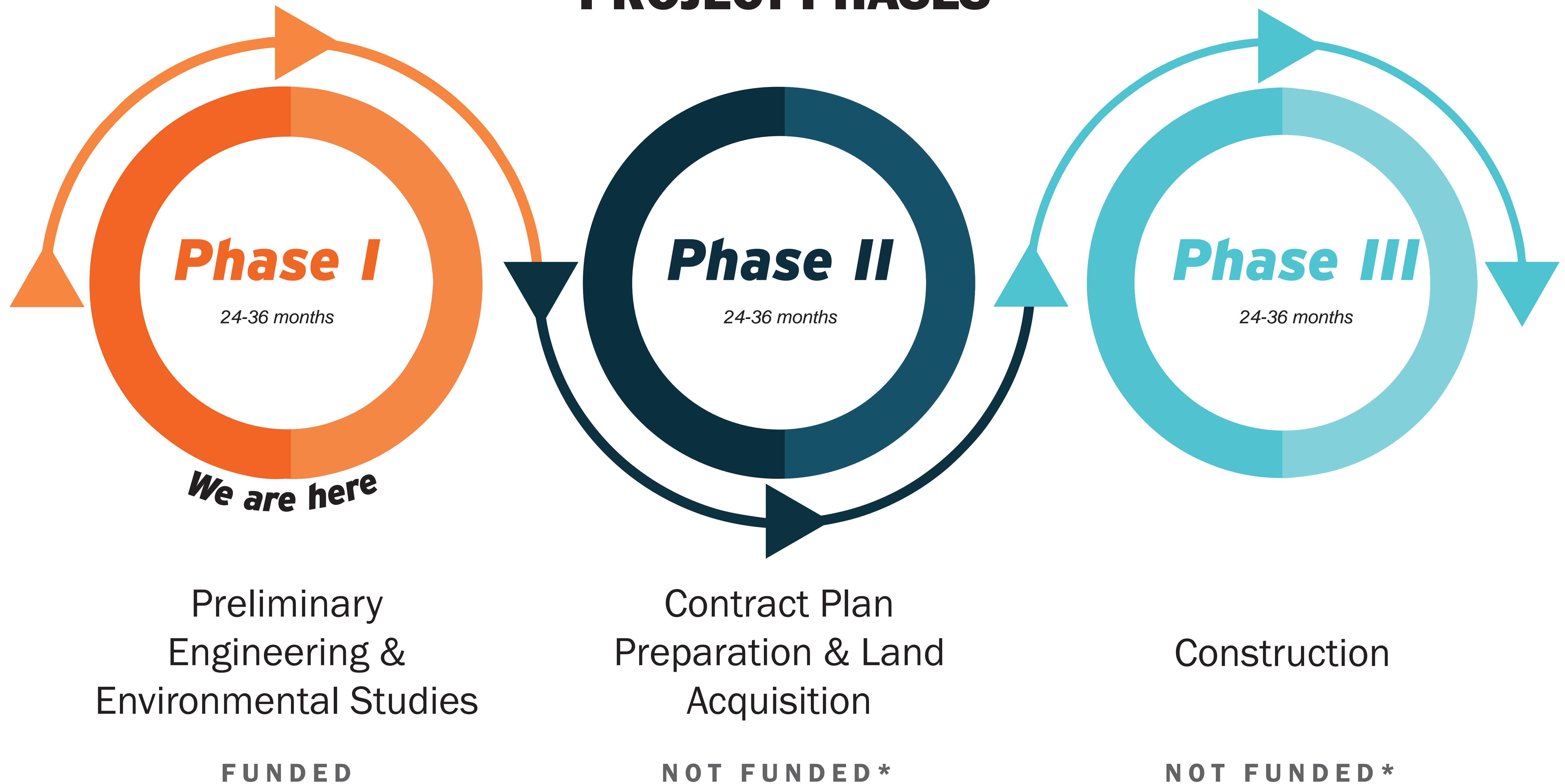
## Interstate 94 - Bishop Ford Freeway

### Existing Conditions





# I-94 AT 111TH STREET INTERCHANGE PROJECT PHASES

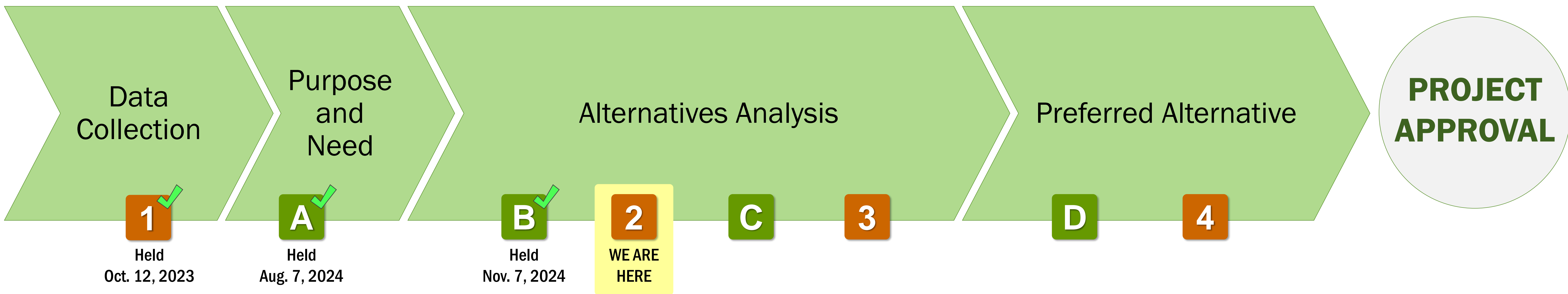


*\*This improvement is not currently included in the Department's FY 2025-2030 Proposed Highway Improvement Program. However, this project will be included in the Department's priorities for future funding consideration among similar improvement needs throughout the region.*

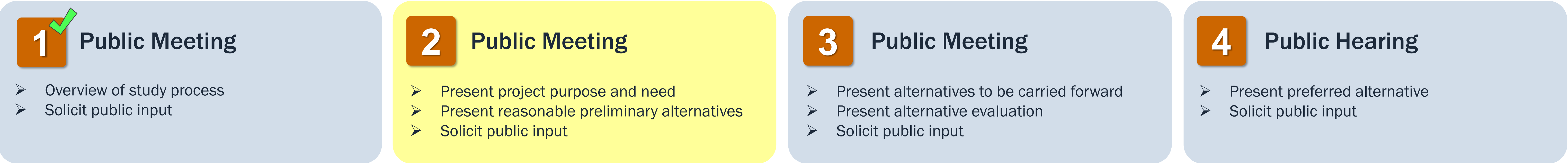


# I-94 AT 111TH STREET INTERCHANGE

## Phase I Study Timeline



### Public Meetings and Hearings



### Community Advisory Group (CAG) Meetings





# I-94 AT 111TH STREET INTERCHANGE

## What is Context Sensitive Solutions (CSS)?

- » Seeks effective, multi-modal transportation solutions by working with stakeholders to develop, build, and maintain cost-effective transportation facilities
- » Stakeholders include – community members, elected officials, businesses, commuters, utility providers, special interest groups, and affected local, State, and Federal Agencies
- » Accomplished through:
  - ◇ Community Advisory Groups (CAG)
    - *A CAG is a group of community stakeholders who meet with the study team to help identify concerns and develop potential solutions*
  - ◇ Public Meetings





## Purpose and Need Statement

The purpose of the project is to improve safety, mobility and multimodal connectivity, as well as to address deficient infrastructure condition.



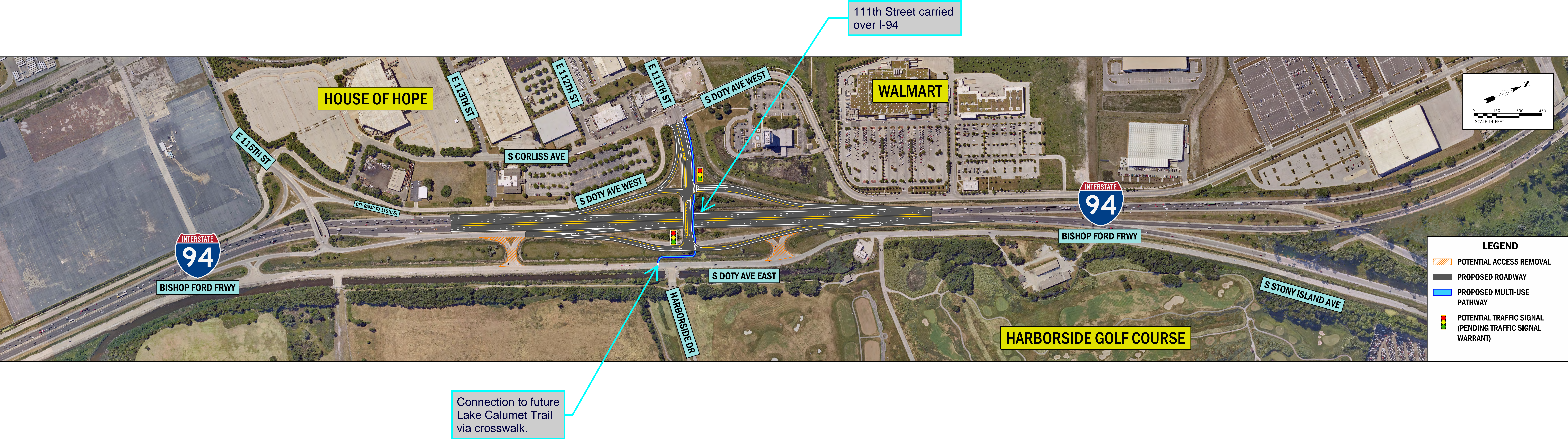
### Needs

- High safety tier locations along 111th Street at I-94 and at the intersection of 111th Street and south Corliss Ave/S Doty Ave
- More efficient access between I-94 and local roadway network
- Lack of bicycle and pedestrian connectivity to east side of I-94
- Deficient vertical clearance of 111<sup>th</sup> Street bridge and flooding concerns along I-94



# I-94 AT 111TH STREET INTERCHANGE

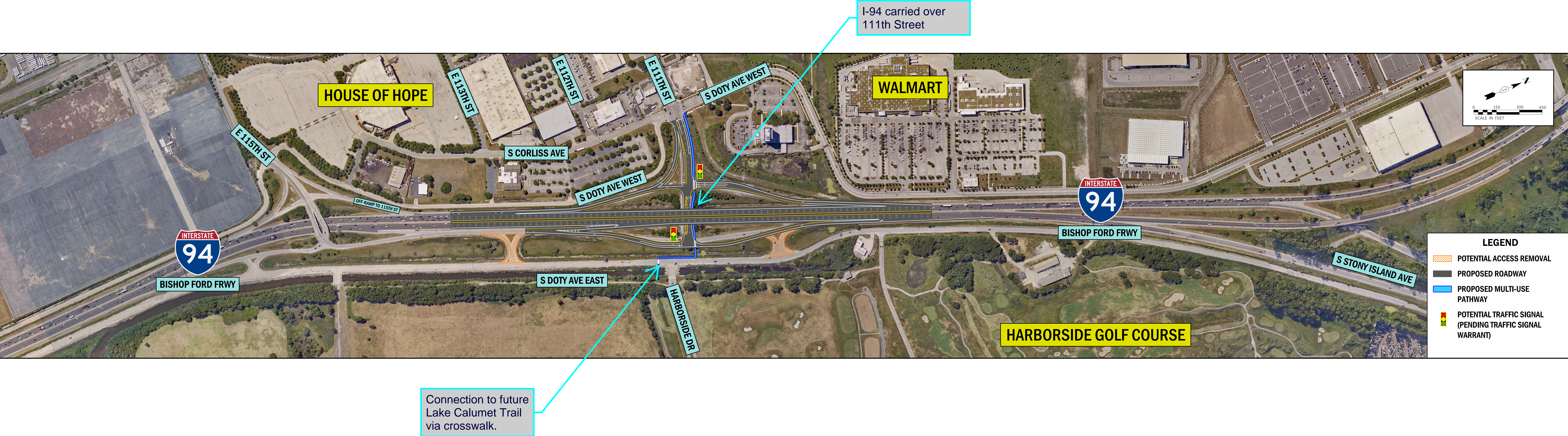
## Alternative 1: Tight Diamond, I-94 Under 111th Street





# I-94 AT 111TH STREET INTERCHANGE

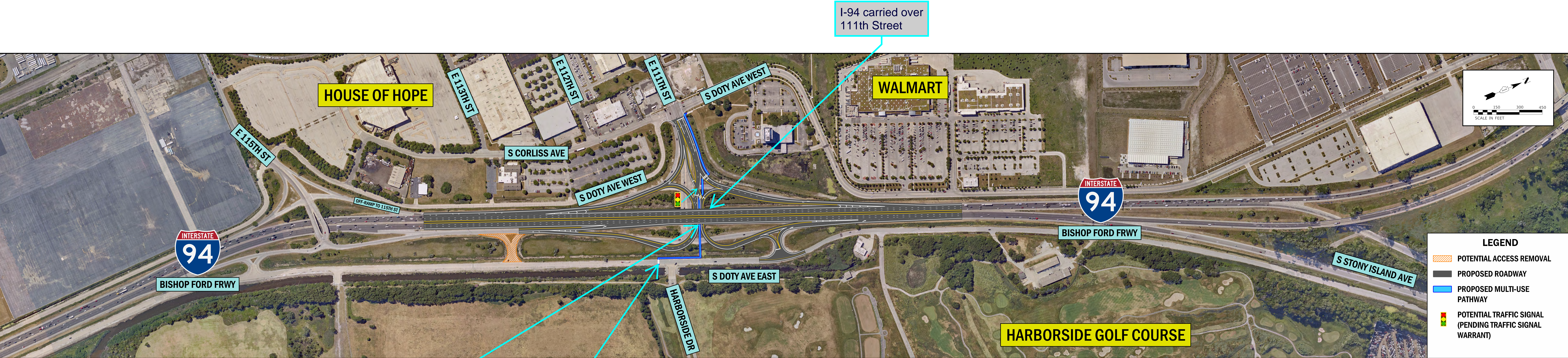
## Alternative 2: Tight Diamond, I-94 Over 111th Street





# I-94 AT 111TH STREET INTERCHANGE

## Alternative 3: Diverging Diamond Interchange, I-94 Over 111th Street



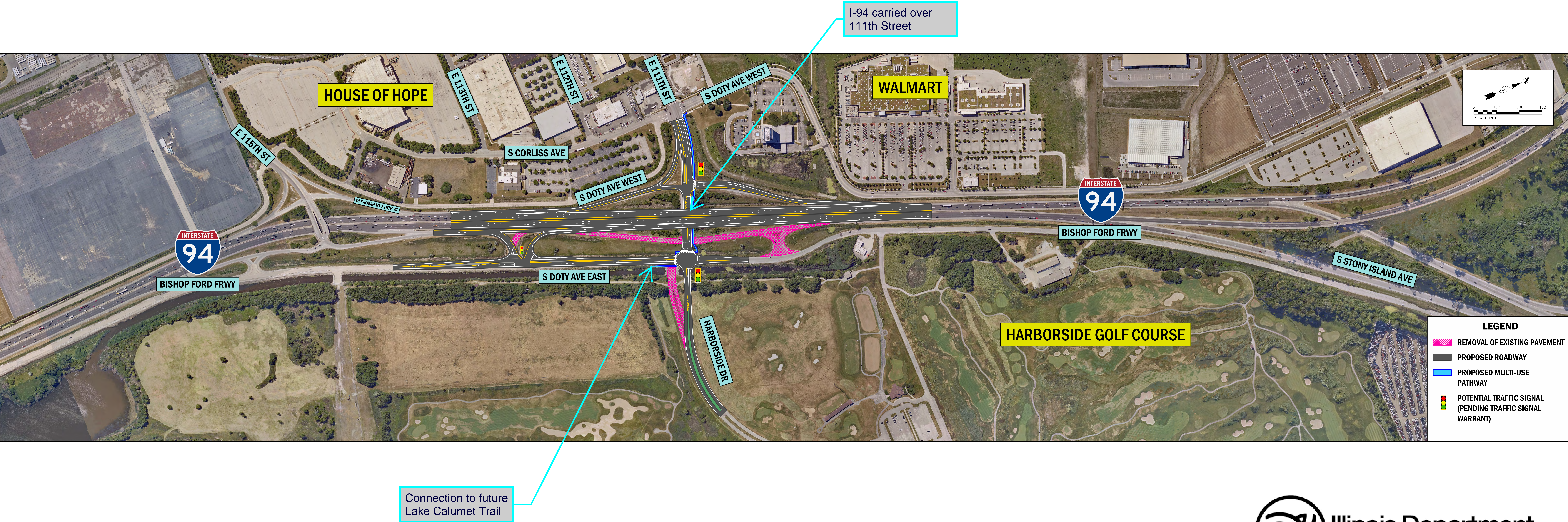
Path to be protected from westbound and eastbound traffic with concrete barrier walls.

Connection to future Lake Calumet Trail. Pedestrians and bicyclists would travel between 111th Street eastbound and westbound traffic to reduce number of crossing points.



# I-94 AT 111TH STREET INTERCHANGE

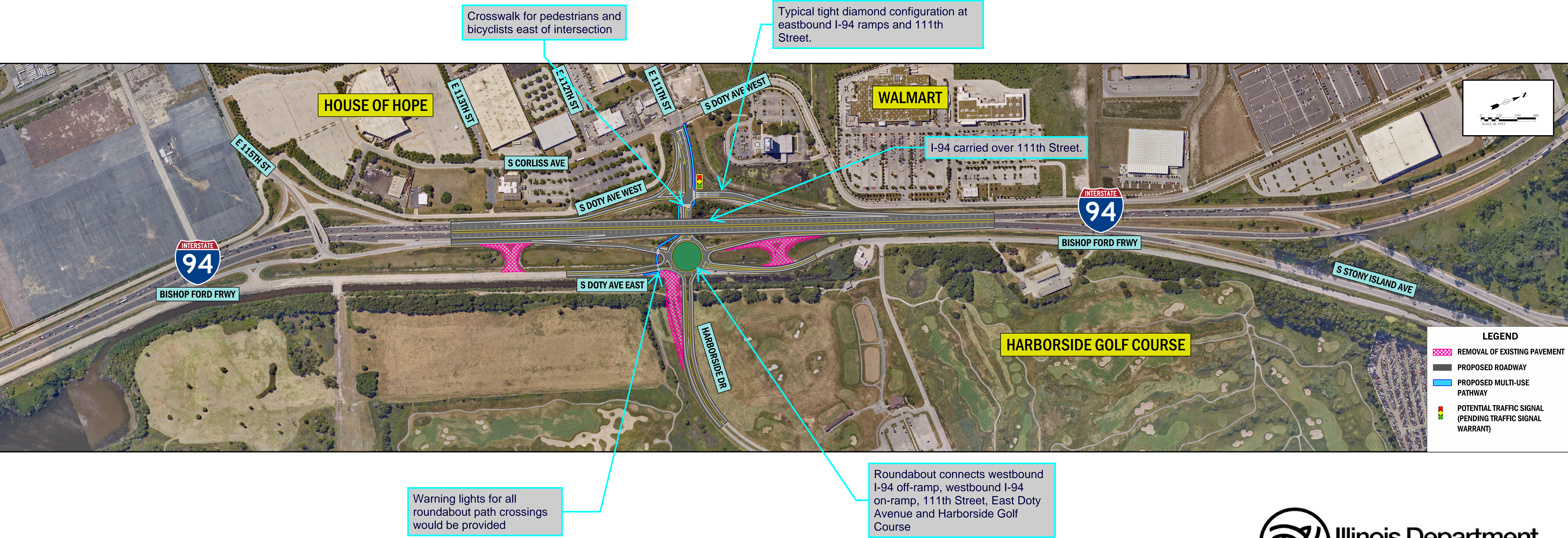
## Alternative 4: Tight Diamond and Collector/Distributor, I-94 Over 111th Street





# I-94 AT 111TH STREET INTERCHANGE

## Alternative 5: Tight Diamond and Roundabout, I-94 Over 111th Street





# I-94 AT 111TH STREET INTERCHANGE

## Ways to comment



**IN-PERSON:** Fill out a comment form at tonight's public meeting



**EMAIL:** Submit your comment to [i94at111study@gmail.com](mailto:i94at111study@gmail.com)



**PHONE:** Call (847) 705-4084



**MAIL:**

**Illinois Department of Transportation**  
Bureau of Programming  
Attn: Valentina DeFex  
201 Center Court  
Schaumburg, IL 60196



Comments are welcome any time, and those received by **September 11, 2025**, will become part of the official meeting record.