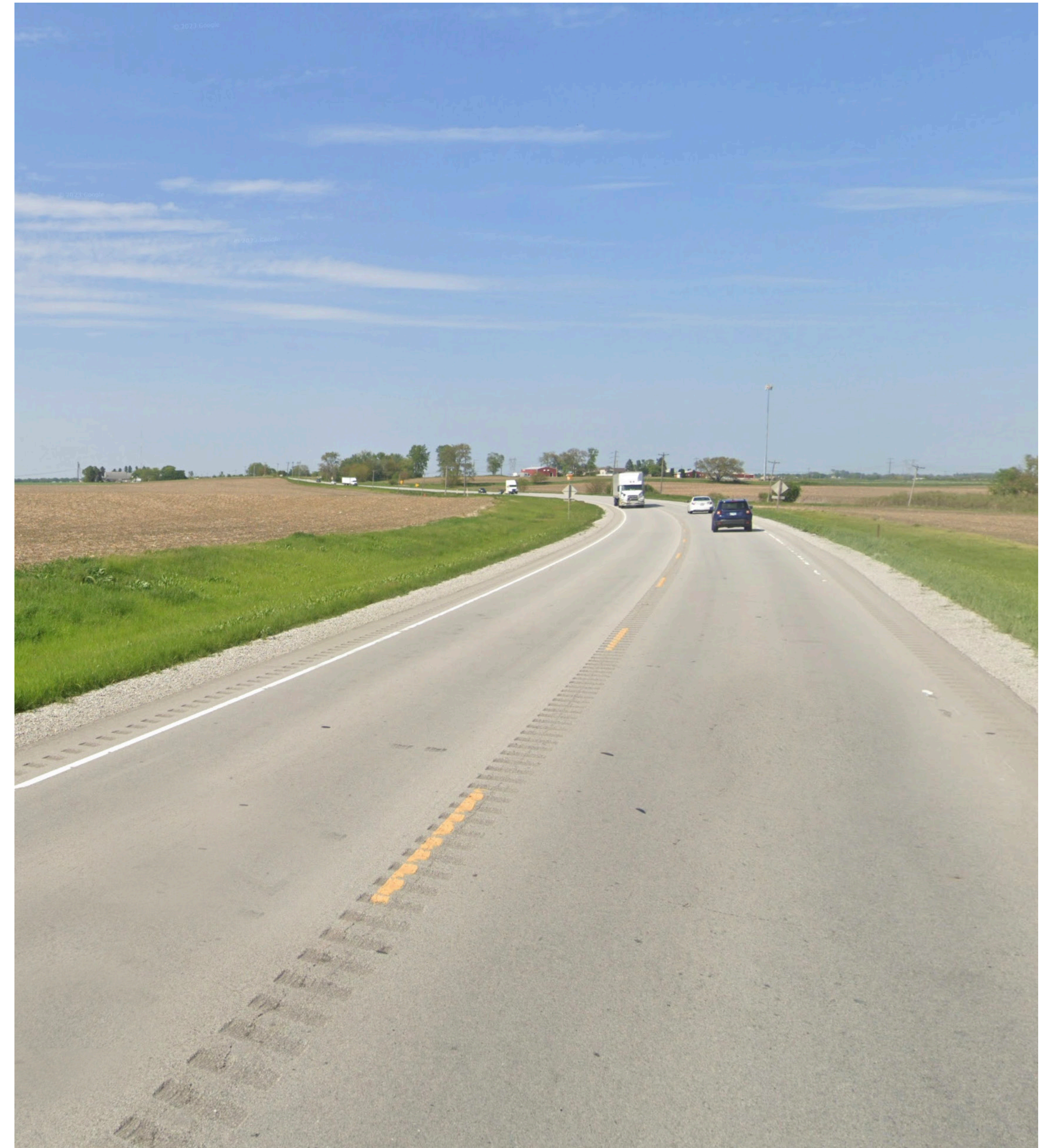


Welcome!

IL 1 at County Line Road Will & Kankakee Counties




Connect With Us!

Written comments can be submitted via email to DOT.IL1atCountyLineRd@illinois.gov. For more information visit the website [idot.click/IL1](https://www.idot.com/click/IL1) or using the QR code.






Project Purpose and Need

Need

-  Improve sightlines
-  Reduce speeds at this intersection
-  From 2017-2021 there were 80 reported crashes at this intersection, with 28 injury crashes resulting in 52 total injuries and 1 fatality

Purpose

-  Reconstruct the intersection to reduce conflict points
-  Improve safety and operational deficiencies
-  Account for and plan for large freight vehicles



An aerial view of the intersection of IL 1 and County Line Road.

Public Outreach and Engagement

- Coordinated with Will County, Kankakee County, Washington Township and Yellowhead Township
- Looking for feedback on the preferred alternative to improve the engineering of the interesection



Coordination with Public Agencies

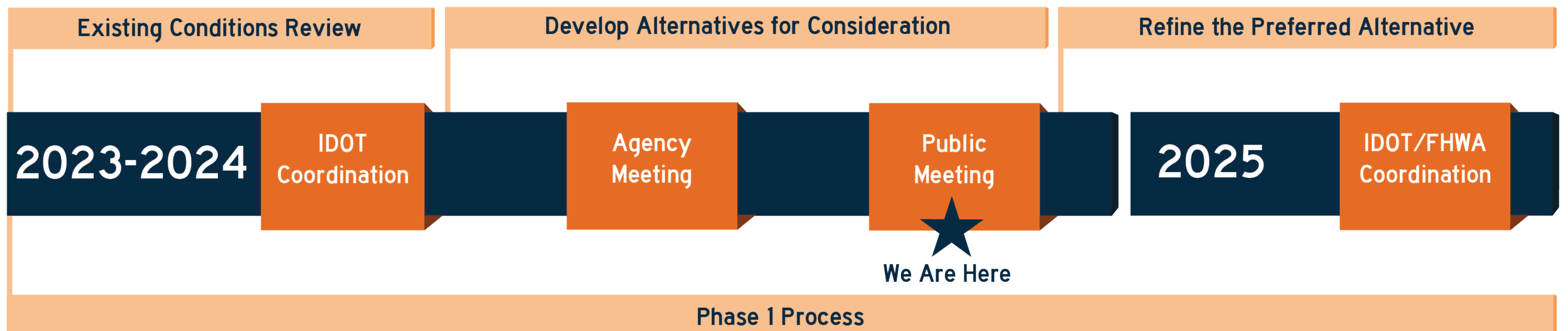


Public Meeting



Feedback to the Team

Project Timeline:



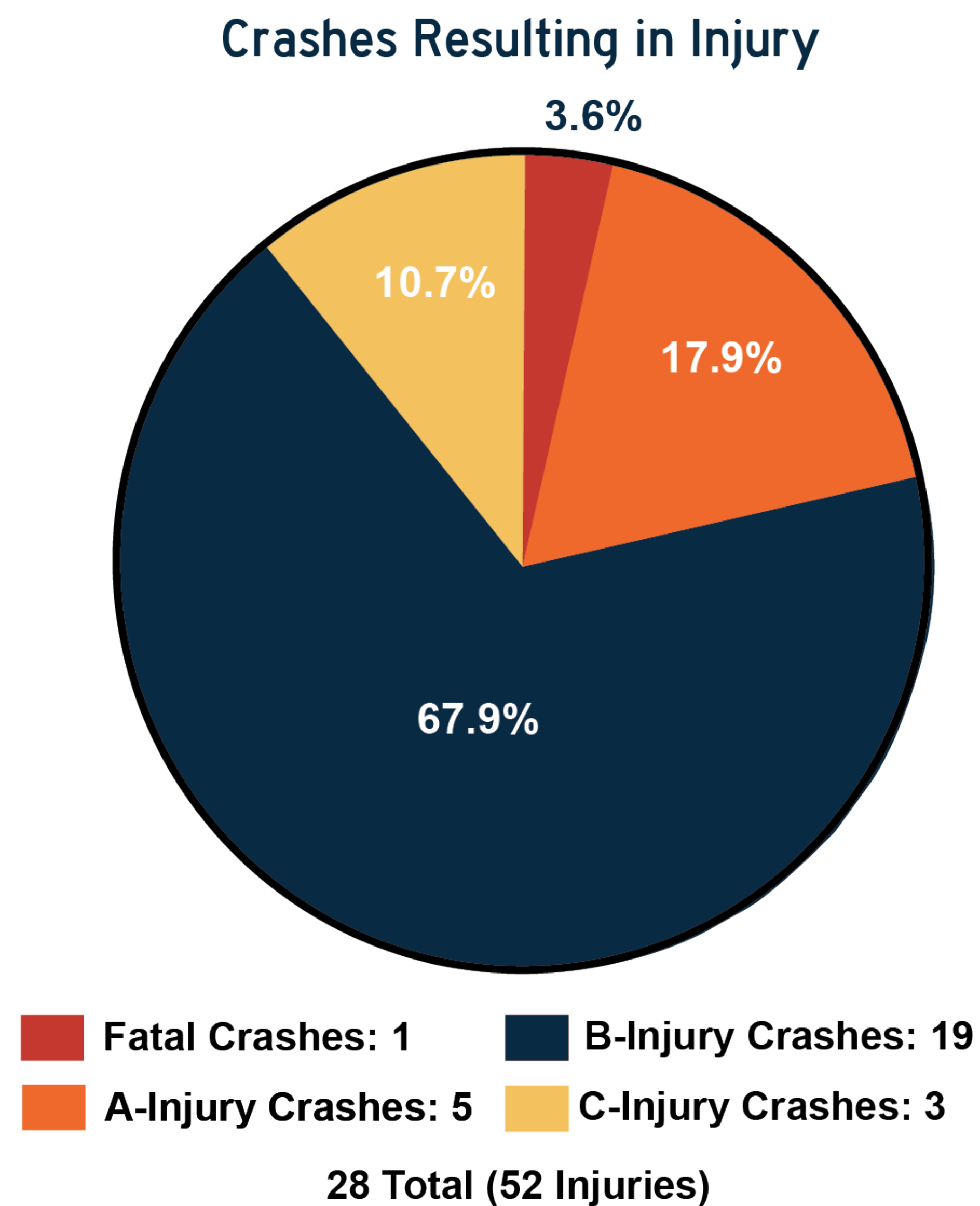
Safety Tier Segment & Intersection (2020)

The image to the right shows the 2020 safety tier segment locations at the intersection, which shows that as you get closer to the intersection along IL 1, the safety tier increases from low to high and critical.

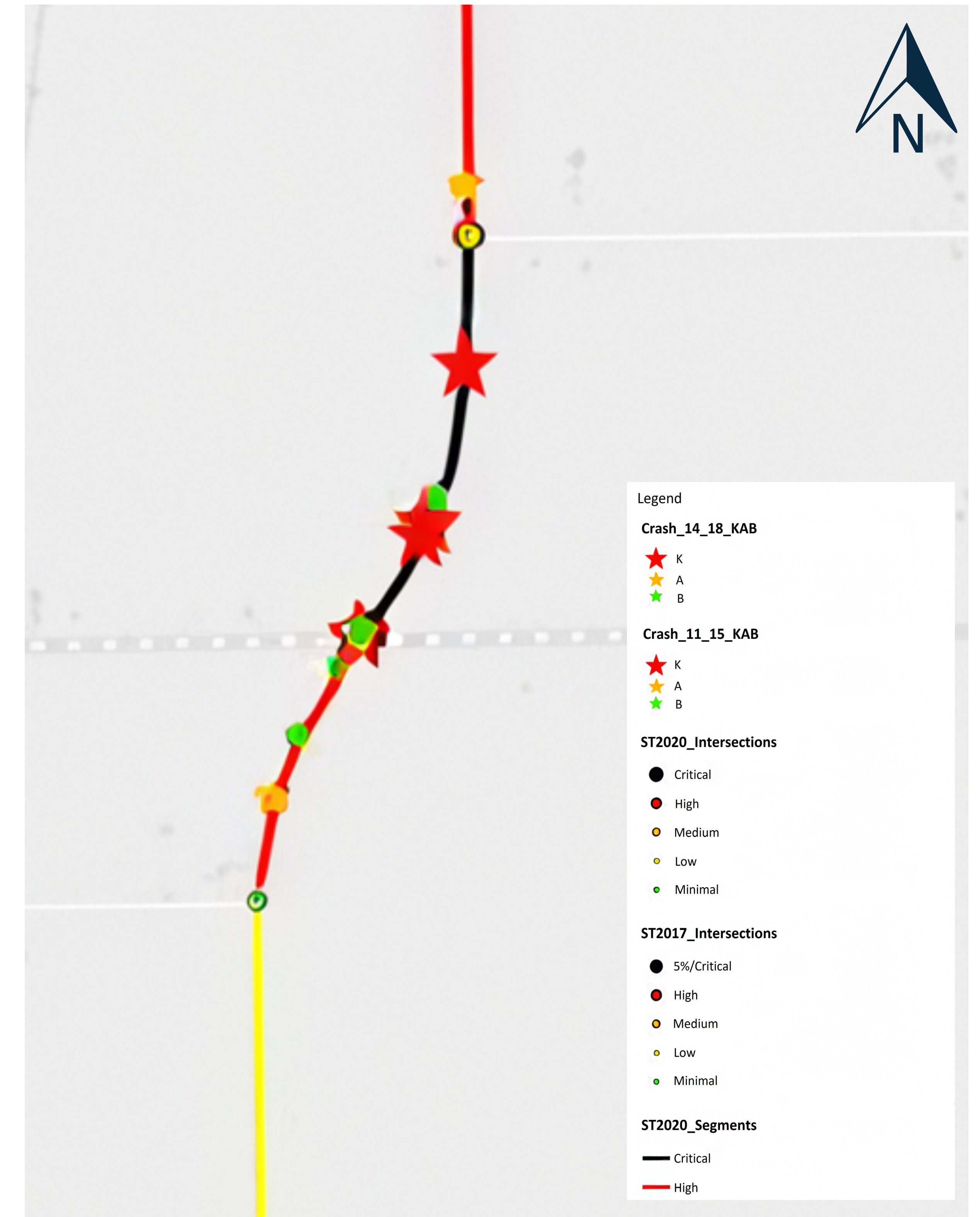
Crash Analysis (2017-2021)

The project team reviewed the crash history at the intersection over the last 5-years. **Of the 80 reported crashes at this intersection, there were 28 injury crashes resulting in 52 total injuries and 1 fatality.**

- **Type A-Injury** is a crash with a suspected serious injury other than fatal;
- **Type B-injury** is a crash with a suspected minor injury;
- **Type C-injury** is a crash with possible injury and;
- **PDO (Property Damage Only)** is a crash where there is no injury resulting from the crash, only property damage.

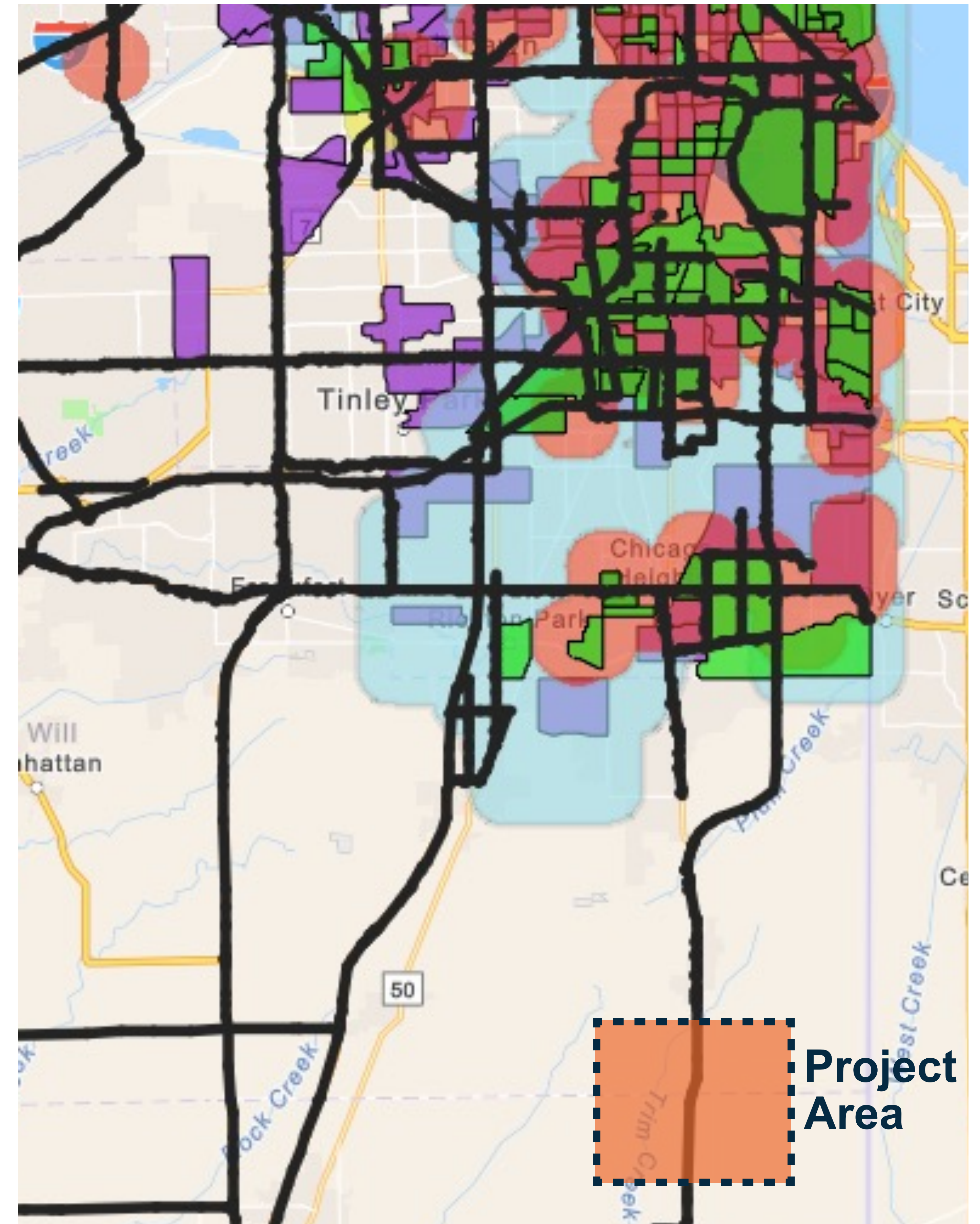
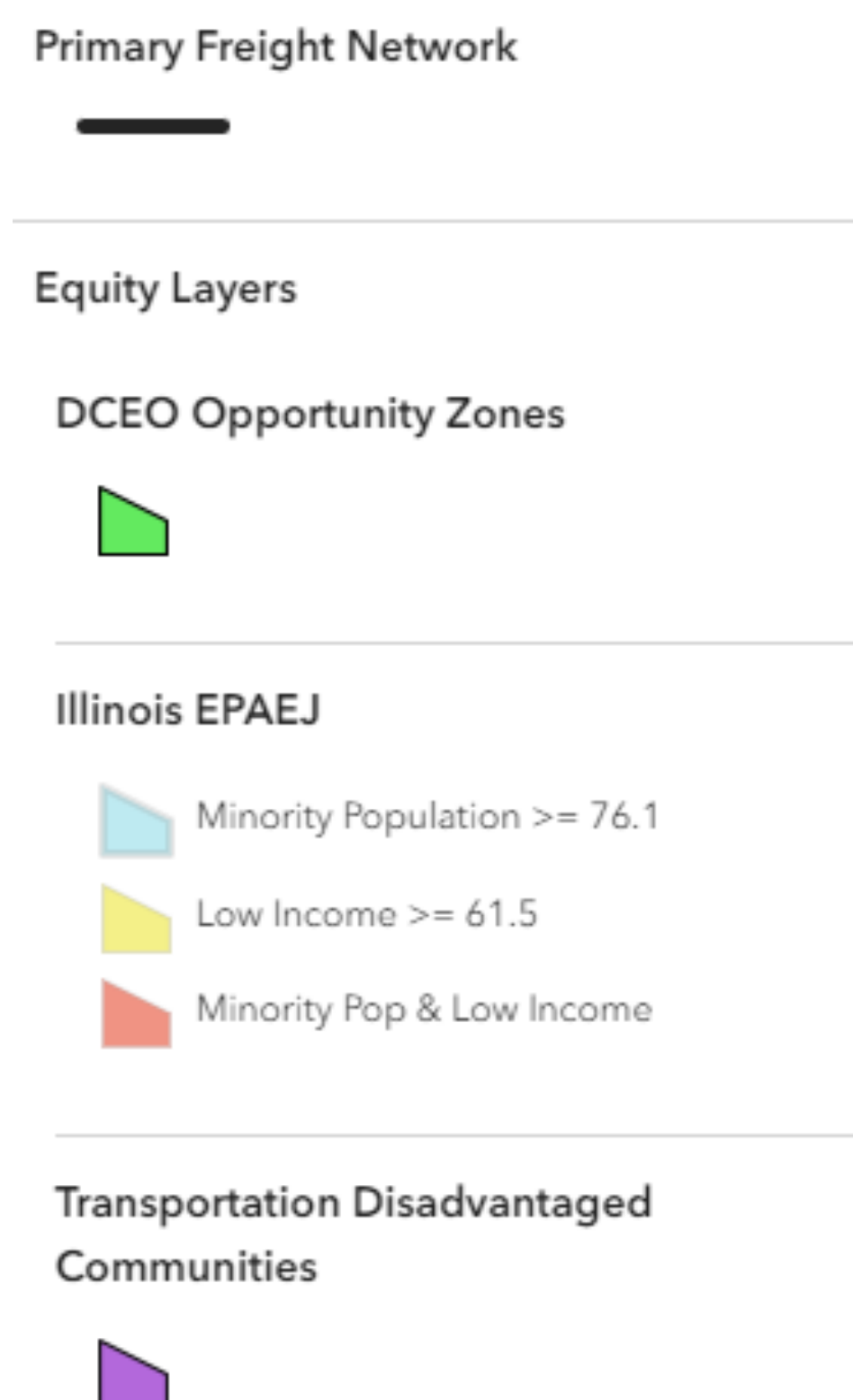


IDOT Safety Tiers



Commerce Considerations

- IL 1 is an IDOT Priority Freight Network
- Agricultural Equipment utilizes IL 1
- IL 1 has over 30% truck traffic
- The west leg of County Line Road is approximately 20% truck traffic
- The east leg of County Line Road is approximately 9% truck traffic
- IL 1 Average Daily Traffic (ADT) over 5,300 total (over 1,800 trucks)



Two Alternatives Being Considered

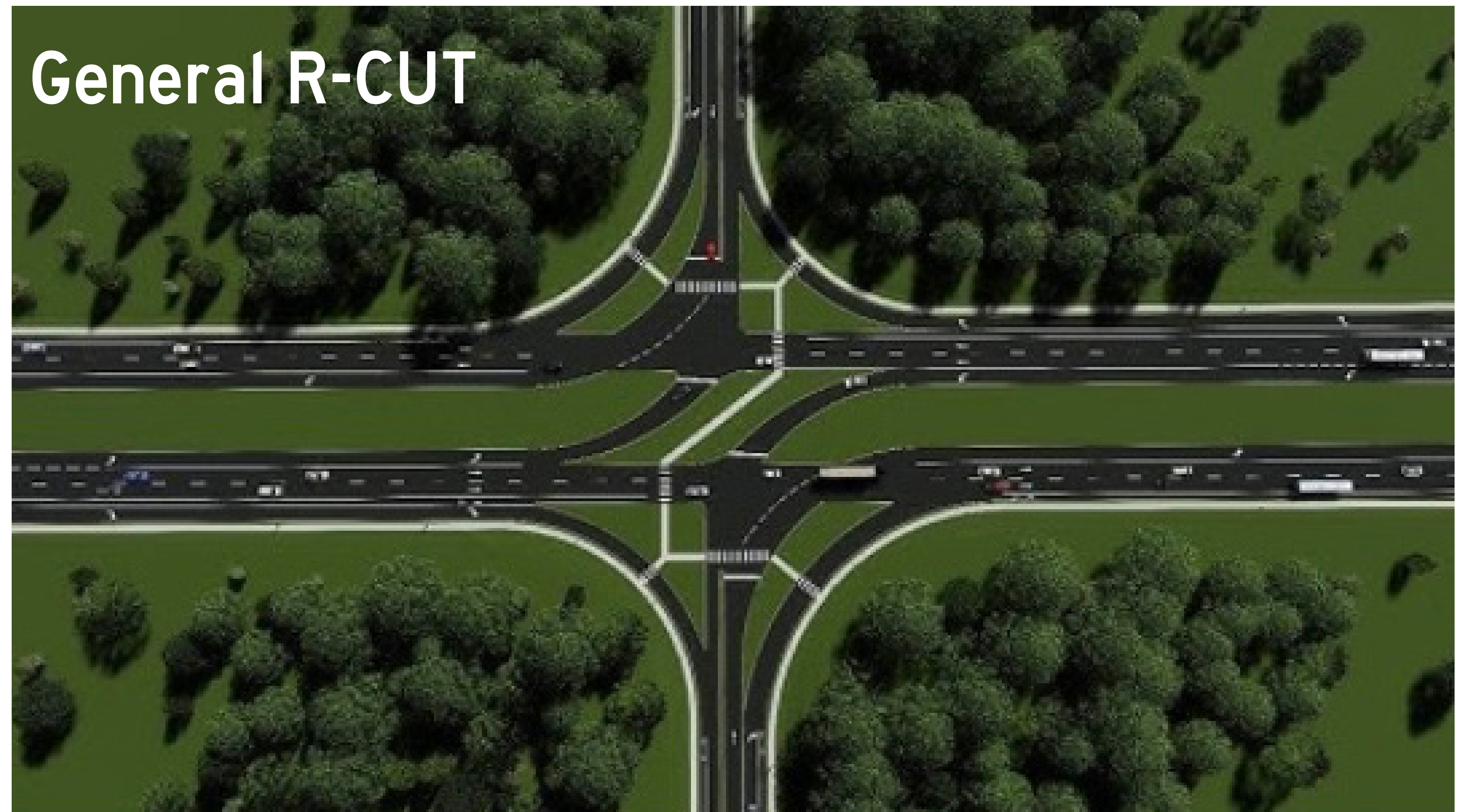
R-CUT

Reduces the number of conflict points by up to 50%, limiting the number and severity of collisions

Can reduce wait times of intersections

An R-CUT intersection can reduce fatalities and injuries by 54%

Restricted Crossing U-Turn intersections limit access to turning movements by requiring drivers to make right turns into the intersection and left turns at designated median openings.



Roundabout

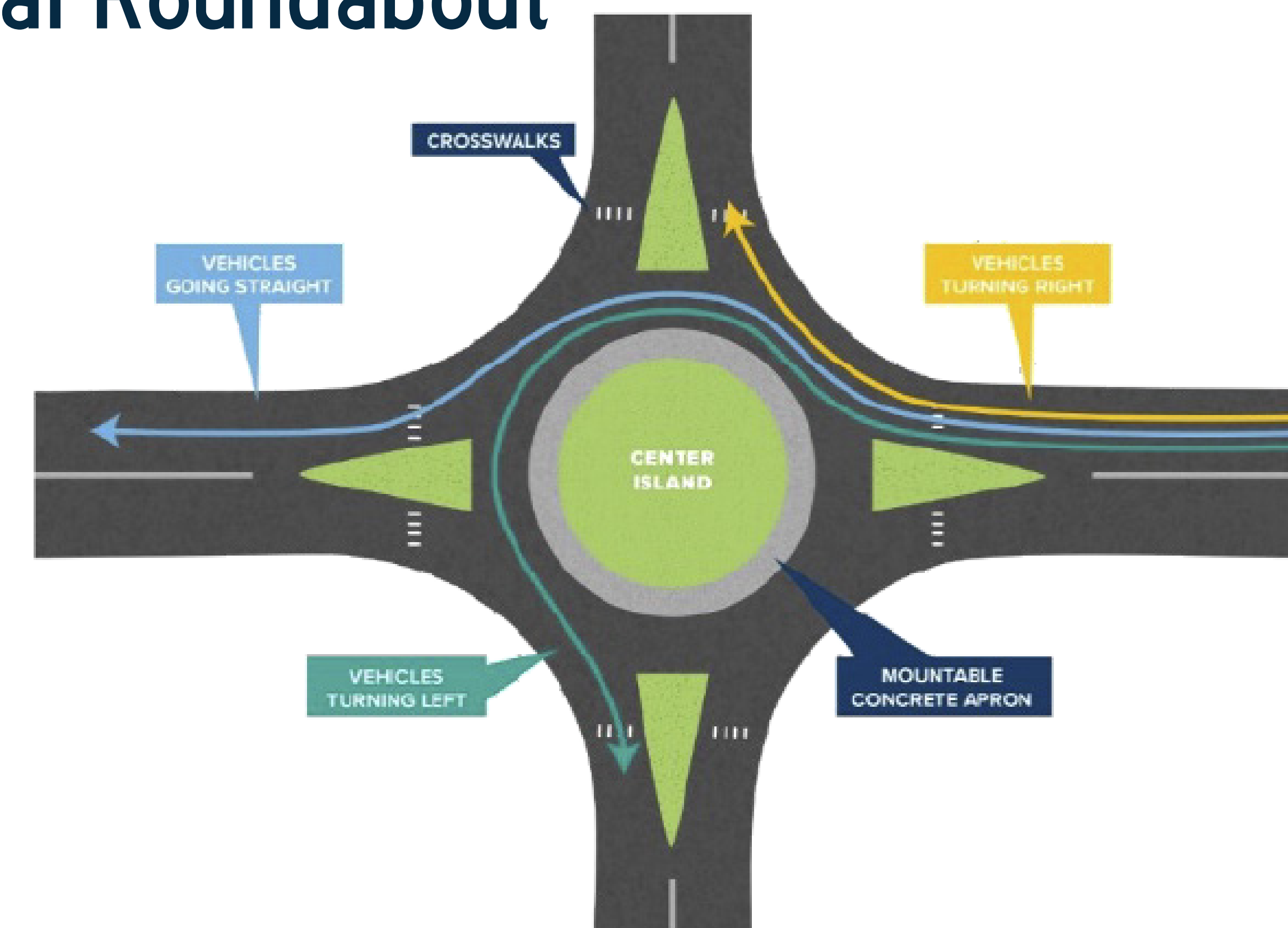
Roundabouts provide opportunities to improve safety and operational efficiency.

Improve safety (87% reduction in fatalities & injuries)

Promote lower speeds

Lead to improved operational performance

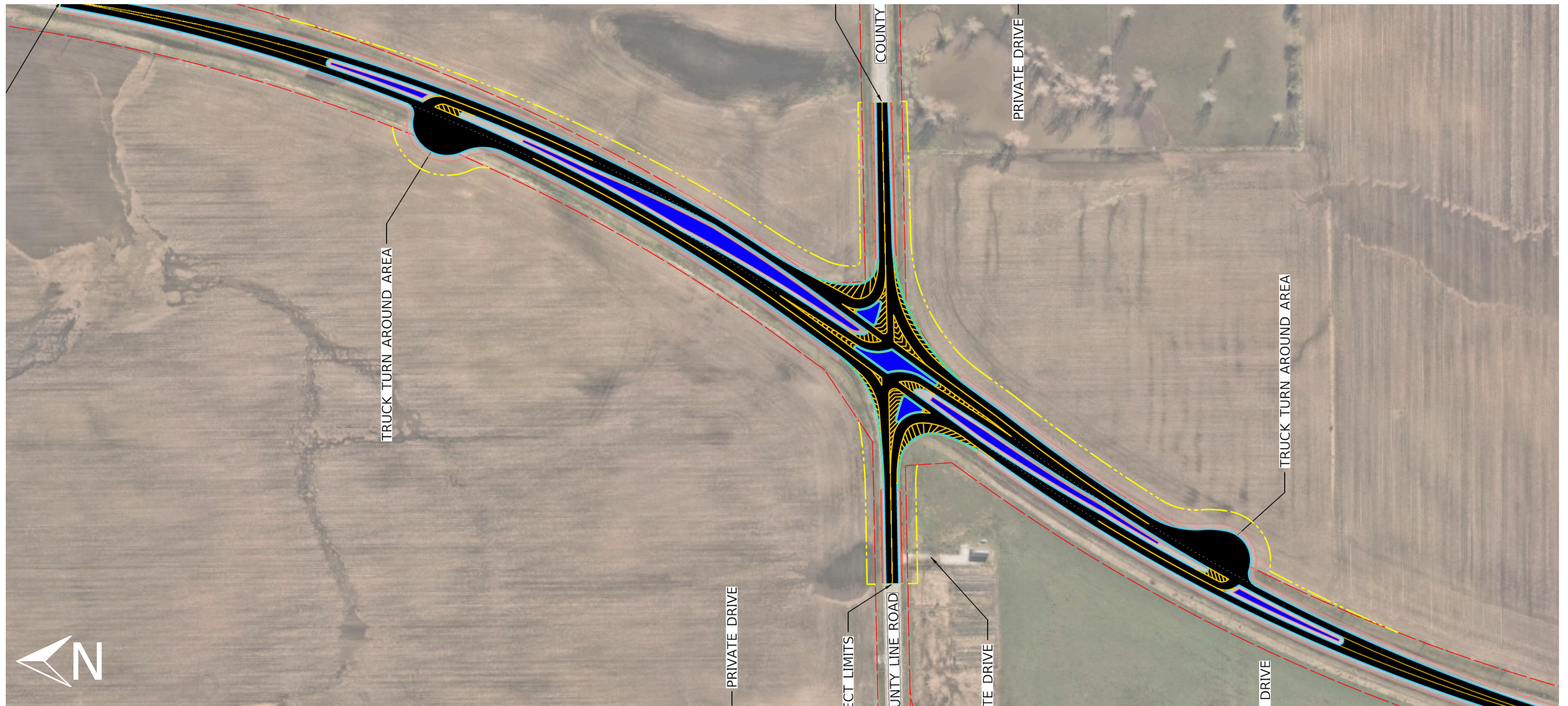
General Roundabout



R-Cut Alternative

The R-Cut Will:

- Improve safety
- Enhance traffic flow
- Increase adverse travel

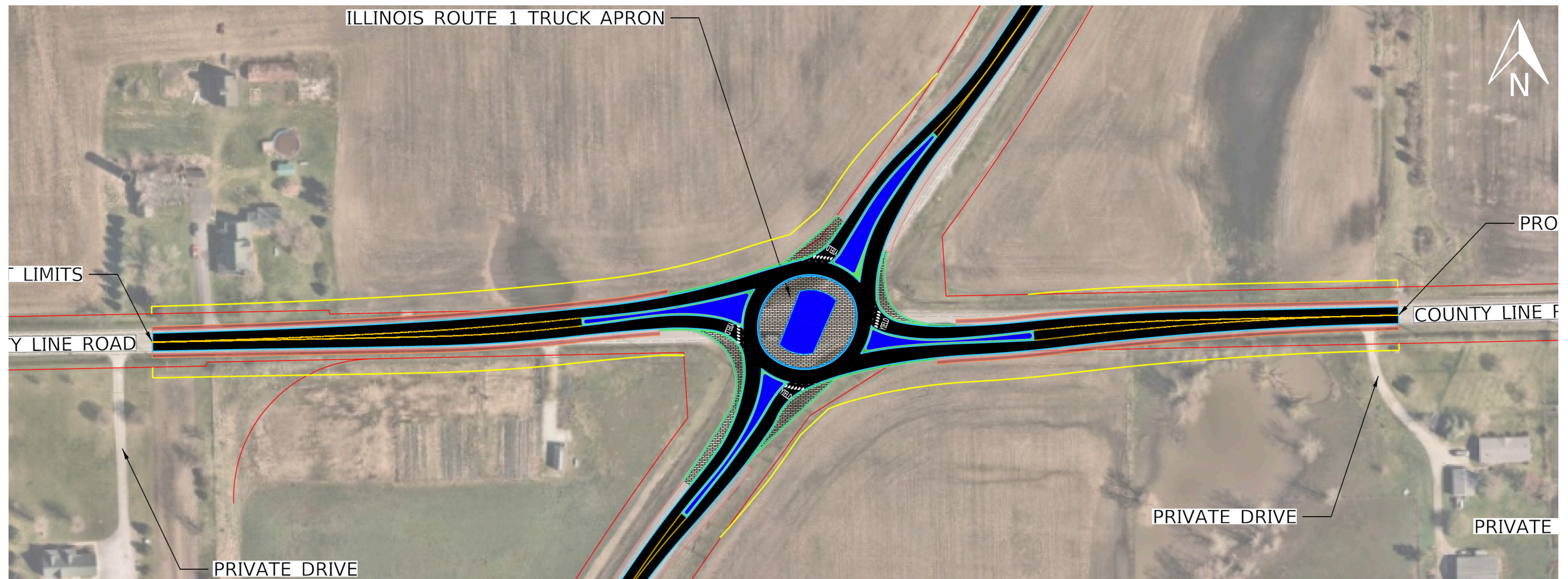


Modern Intersection Designs Addressing Safety

The roundabout compared to an R-CUT is:

- Lower in cost
- Has less ROW impacts
- Historically safer than the R-CUT
- Better at reducing speeds

Alternative	Cost	ROW	LOS (N-S)	LOS (E-W)	Safety
Roundabout	\$5.1M	1.27 Acres	A	A	87% Reduction in Fatalities & Injuries
R-CUT	\$9.1M	1.65 Acres	A	A/B/D	54% Reduction in Fatalities & Injuries



3 TYPES OF LAND ACQUISITION (TYPICALLY 2-3 YEARS ONCE FUNDING IS IDENTIFIED)

FEE SIMPLE ACQUISITION:

Or other acquisition of all rights and interest of real property.

PERMANENT EASEMENTS:

Where underlying ownership is retained by the property owner, but access is permanently allowed during and after construction for maintenance of facilities such as drainage structures.

TEMPORARY EASEMENTS:

Where underlying ownership is retained by the property owner but access is temporarily allowed only during construction for items such as grading work, driveway construction, and landscaping restoration.



Land Acquisition Process:



How to Share Your Feedback!



Talk with the project team during the public meeting



Email the project team at:

DOT.IL1atCountyLineRd@illinois.gov



Leave your feedback on a public comment form



Visit the website

Next Steps:

Open Public
Comment Window

Selection of the
Intersection
Preferred
Alternative

Additional Design
Details and
Specifications

Submit comments
online via the
website:
idot.click/IL1

Anticipated study
completion in
2025

